

KD-Validated Anti-Zinc Finger E-Box Binding Homeobox 1 Recombinant Rabbit Monoclonal



Catalog #: 62657

Aliases

ZEB1; Zinc Finger E-Box Binding Homeobox 1; AREB6; Zfhx1a; Zfhbp; FECD6; TCF8; BZP; Transcription Factor 8 (Represses Interleukin 2 Expression); Posterior Polymorphous Corneal Dystrophy 3; Zinc Finger E-Box-Binding Homeobox 1; Negative Regulator Of IL2; NIL-2-A; PPCD3; ZEB; Zinc Finger Homeodomain Enhancer-Binding Protein; Delta-Crystallin Enhancer Binding Factor 1; NIL-2-A Zinc Finger Protein; Transcription Factor 8; DELTAEF1; NIL2A; TCF-8

Background

Gene Name: ZEB1

NCBI Gene Entry: [6935](#)

UniProt Entry: [P37275](#)

Application Information

Molecular Weight: Predicted, 124 kDa, observed, 200 kDa

Clonality: Rabbit monoclonal antibody

Clone ID: 24GB2265

Species Reactivity: Human, mouse

Applications Tested: Western blotting (WB), flow cytometry (FCM), immunocytochemistry (IC)

Immunogen

A synthesized peptide derived from human AREB6

Isotype

Rabbit IgG

Storage Buffer

Supplied in PBS (pH 7.4) containing 50% glycerol, and 0.02% sodium azide.

Storage

Store at -20 °C for one year.

Recommended Dilutions

Western Blotting (WB): 1:1,000-1:5,000

Flow Cytometry (FCM): 1:2,000

Immunocytochemistry (IC): 1:100-1:1,000

SUPPORT

SUPPORT@GENUINBIOTECH.COM
TEL: +1-540-855-7041

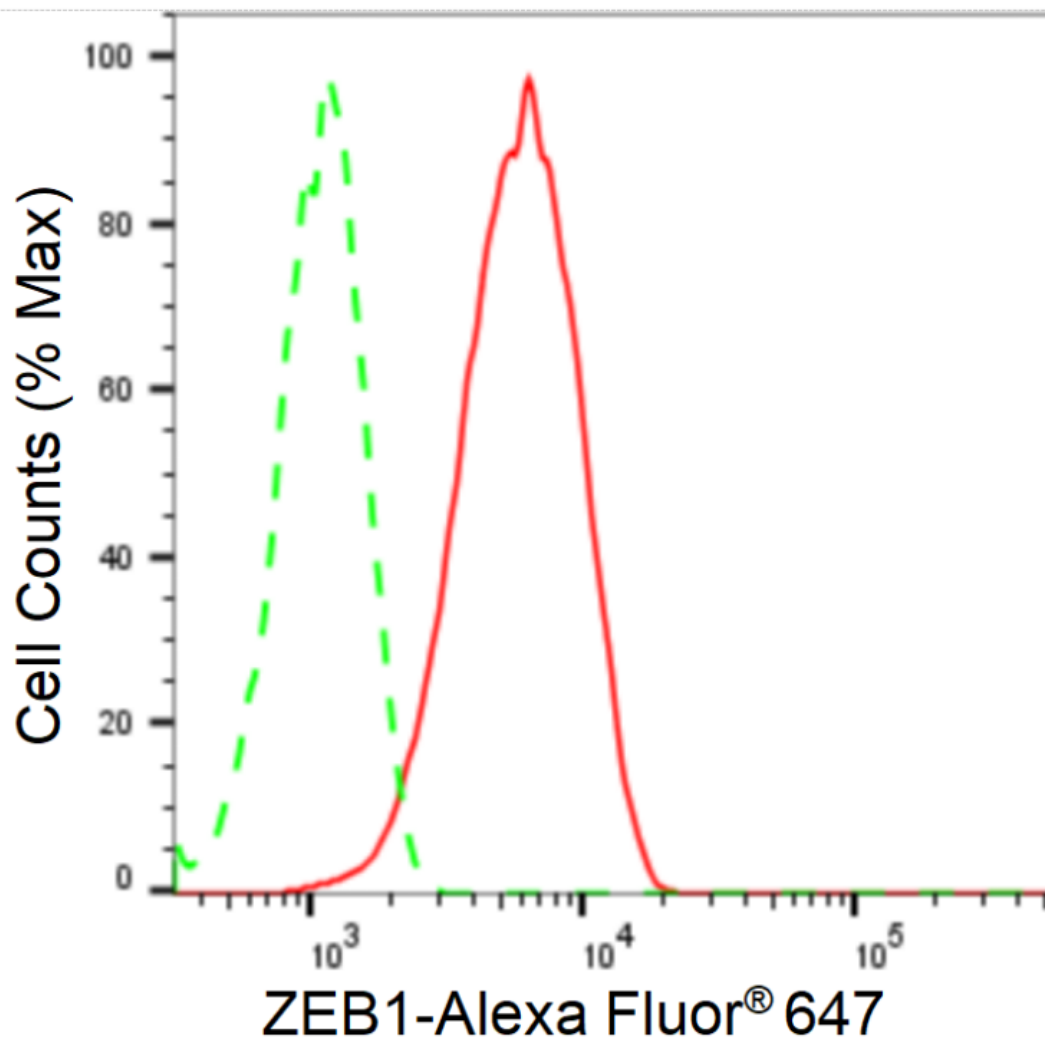
ORDERS

SALES@GENUINBIOTECH.COM
FAX: +1-540-855-7041

WWW.GENUINBIOTECH.COM

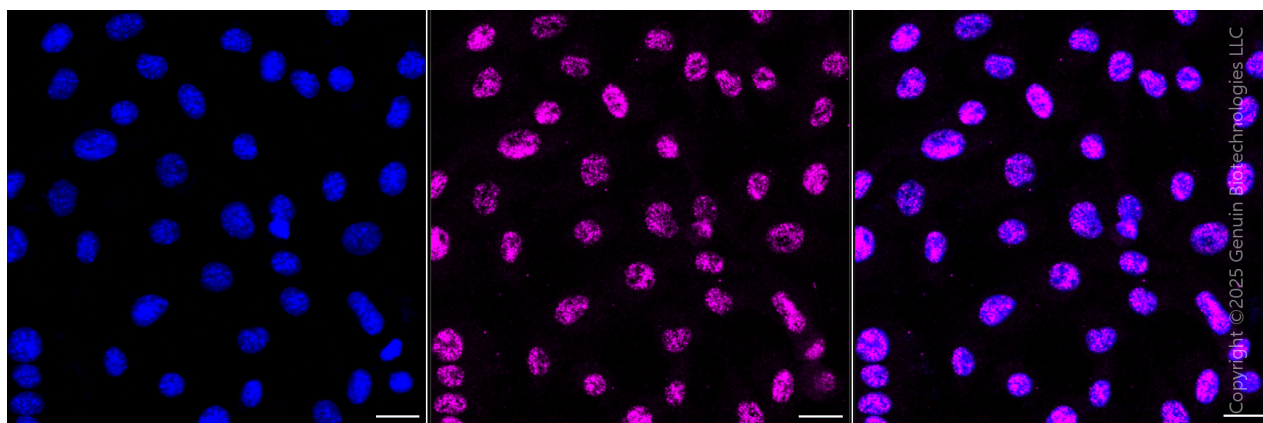
Note: This product is for research use only.

Validation Data

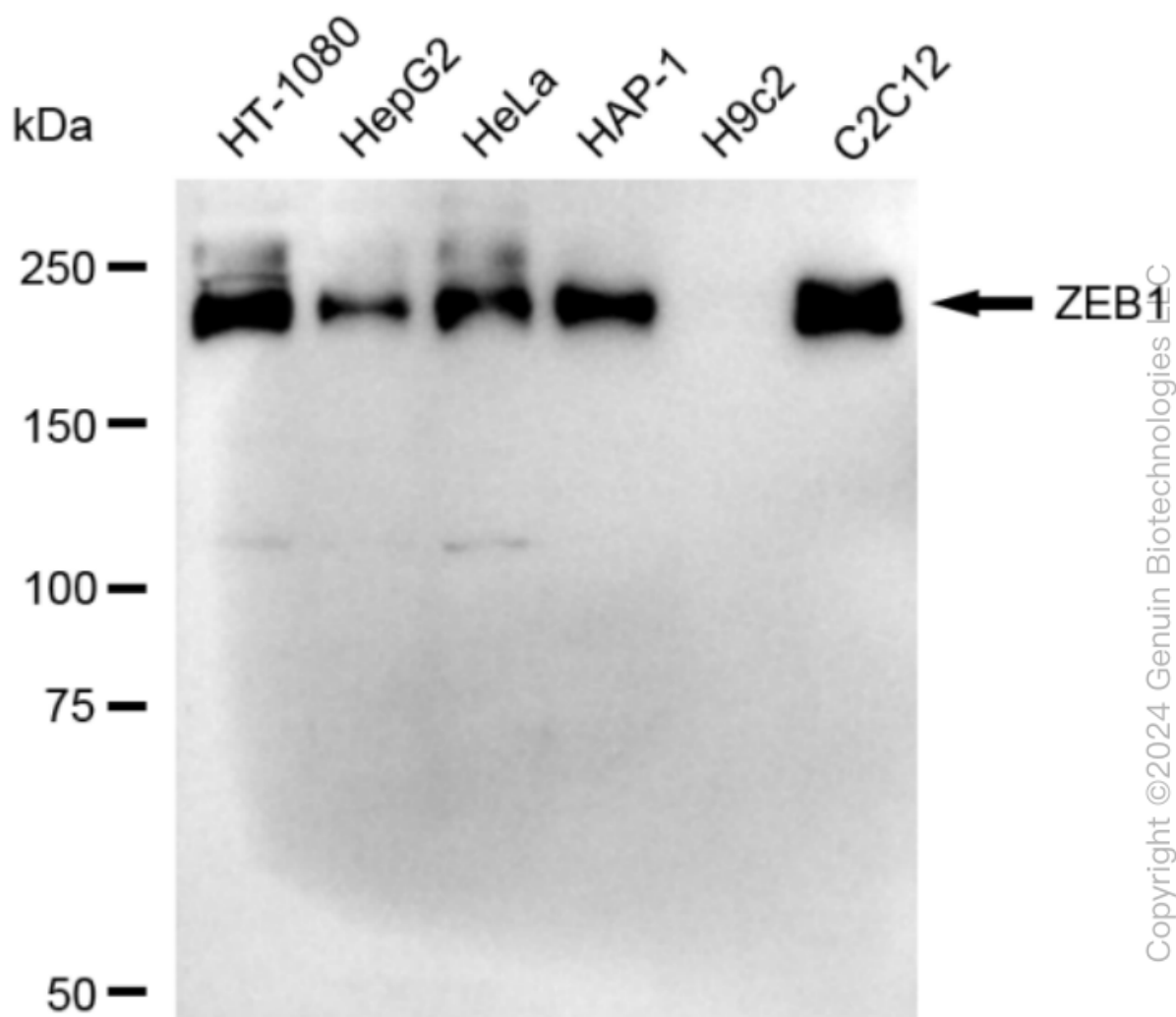


Copyright ©2024 Genuin Biotechnologies LLC

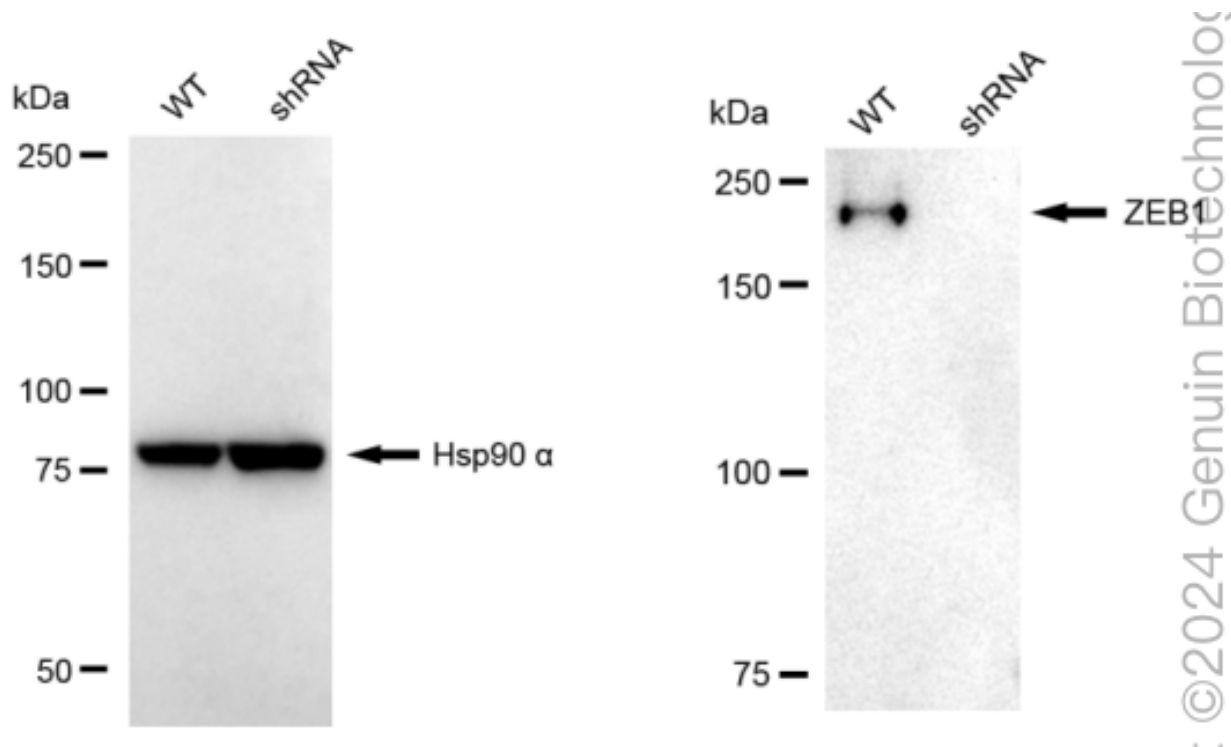
Flow cytometric analysis of ZEB1 expression in C2C12 cells using anti-ZEB1 antibody (Cat#62657, 1:2,000). Green, isotype control; red, ZEB1.



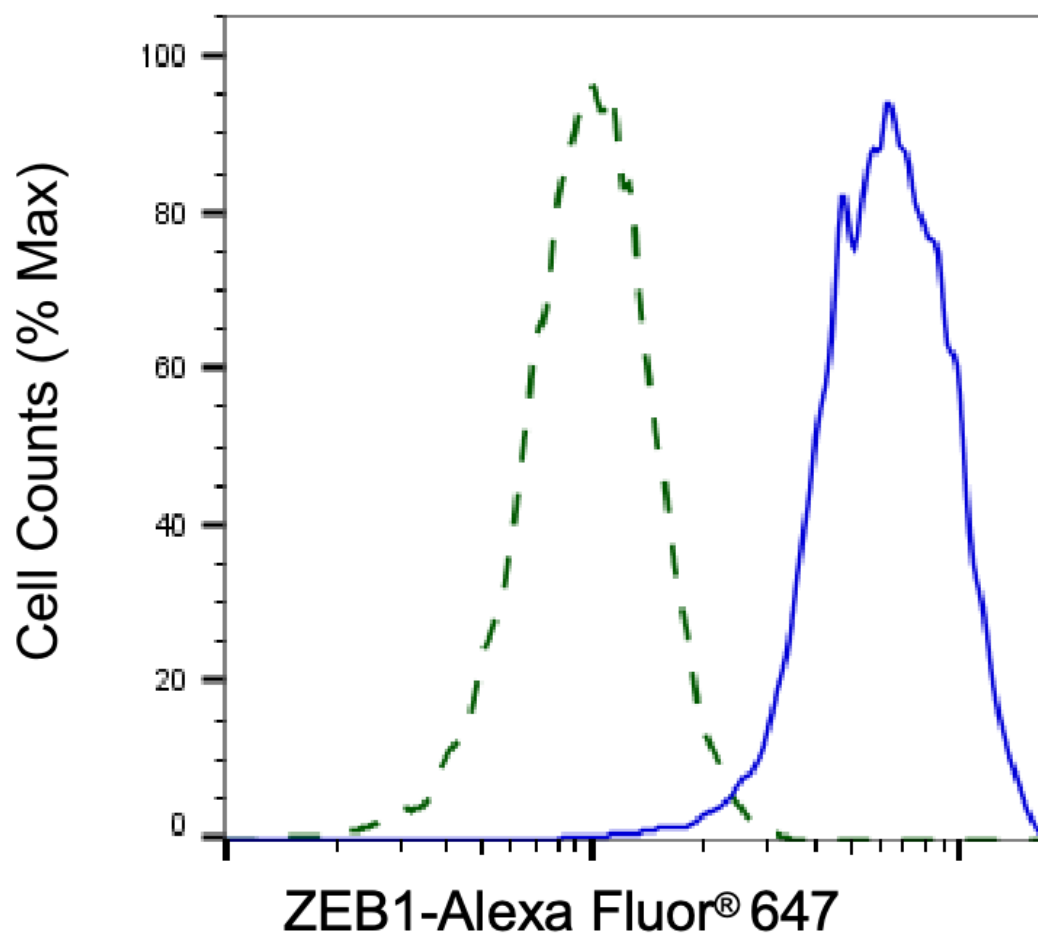
Immunocytochemical staining of C2C12 cells with anti-ZEB1 antibody (Cat#62657, 1:1,000) . Nuclei were stained blue with DAPI; ZEB1 was stained magenta with Alexa Fluor® 647. Images were taken using Leica stellaris 5. Protein abundance based on laser Intensity and smart gain: Medium. Scale bar, 20 μ m.



Western blotting analysis using anti-ZEB1 antibody (Cat#62657). Total cell lysates (30 μ g) from various cell lines were loaded and separated by SDS-PAGE. The blot was incubated with anti-ZEB1 antibody (Cat#62657, 1:5,000) and HRP-conjugated goat anti-rabbit secondary antibody (Cat#201, 1:20,000) respectively. Image was developed using FeQ™ ECL Substrate Kit (Cat#226).



Western blotting analysis using anti-ZEB1 antibody (Cat#62657). ZEB1 expression in wild type (WT) and ZEB1 shRNA knockdown (KD) HeLa cells with 20 µg of total cell lysates. Hsp90 α serves as a loading control. The blot was incubated with anti-ZEB1 antibody (Cat#62657, 1:5,000) and HRP-conjugated goat anti-rabbit secondary antibody (Cat#201, 1:20,000) respectively. Image was developed using NaQ™ ECL Substrate Kit (Cat#716).



Copyright ©2025 Genuin Biotechnologies LLC

Validation of ZEB1 knockdown using flow cytometry. Wild-type(WT, Blue) and knockdown(KD, Green) HeLa cells were stained with anti-ZEB1 antibody (Cat#62657, 1:2,000) and analyzed using BD flow cytometer.