

KD-Validated Anti-TNF Alpha Induced Protein 8 Recombinant Rabbit Monoclonal Antibody



Catalog #: 62659

Aliases

TNFAIP8; TNF Alpha Induced Protein 8; MDC-3.13; SCC-S2; GG2-1; Head And Neck Tumor And Metastasis-Related Protein; Tumor Necrosis Factor Alpha-Induced Protein 8; NF-Kappa-B-Inducible DED-Containing Protein; TNF-Induced Protein GG2-1; NDED; Tumor Necrosis Factor, Alpha-Induced Protein 8; Tumor Necrosis Factor, Alpha Induced Protein 8; TNF Alpha-Induced Protein 8; SCCS2

Background

Gene Name: TNFAIP8

NCBI Gene Entry: [25816](#)

UniProt Entry: [O95379](#)

Application Information

Molecular Weight: Predicted, 23 kDa, observed, 18,21 kDa

Clonality: Rabbit monoclonal antibody

Clone ID: 24GB2315

Species Reactivity: Human, mouse, rat

Applications Tested: Western blotting (WB), flow cytometry (FCM)

Immunogen

A synthesized peptide derived from human TNFAIP8

Isotype

Rabbit IgG

Storage Buffer

Supplied in PBS (pH 7.4) containing 50% glycerol, and 0.02% sodium azide.

Storage

Store at -20 °C for one year.

Recommended Dilutions

Western Blotting (WB): 1:1,000-1:5,000

Flow Cytometry (FCM): 1:2,000

SUPPORT

SUPPORT@GENUINBIOTECH.COM
TEL: +1-540-855-7041

ORDERS

SALES@GENUINBIOTECH.COM
FAX: +1-540-855-7041

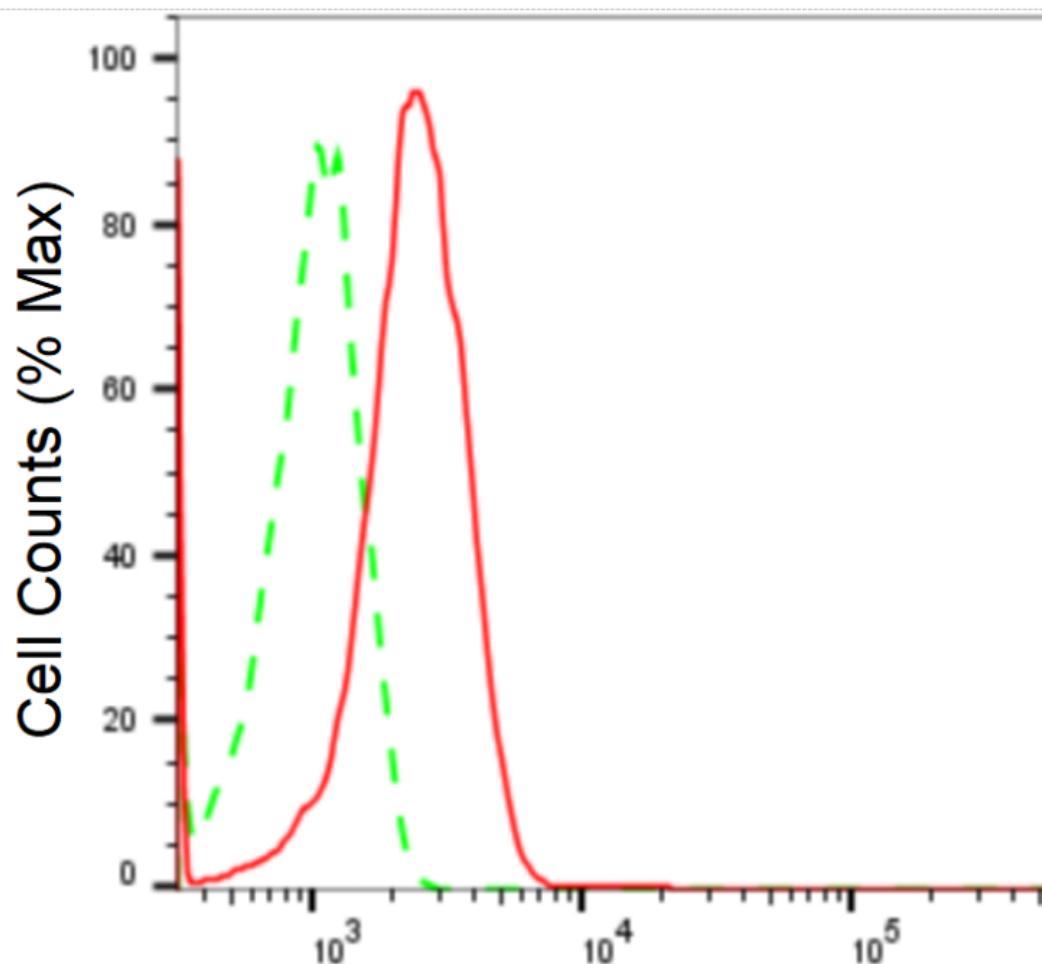
WWW.GENUINBIOTECH.COM

KD-Validated Anti-TNF Alpha Induced Protein 8 Recombinant Rabbit Monoclonal Antibody

PAGE 2

Note: This product is for research use only.

Validation Data



Copyright ©2024 Genuin Biotechnologies LLC

TNF alpha induced protein 8-Alexa Fluor® 647

Flow cytometric analysis of TNF alpha induced protein 8 expression in HeLa cells using anti-TNF alpha induced protein 8 antibody (Cat#62659, 1:2,000). Green, isotype control; red, TNF alpha induced protein 8.

SUPPORT

SUPPORT@GENUINBIOTECH.COM
TEL: +1-540-855-7041

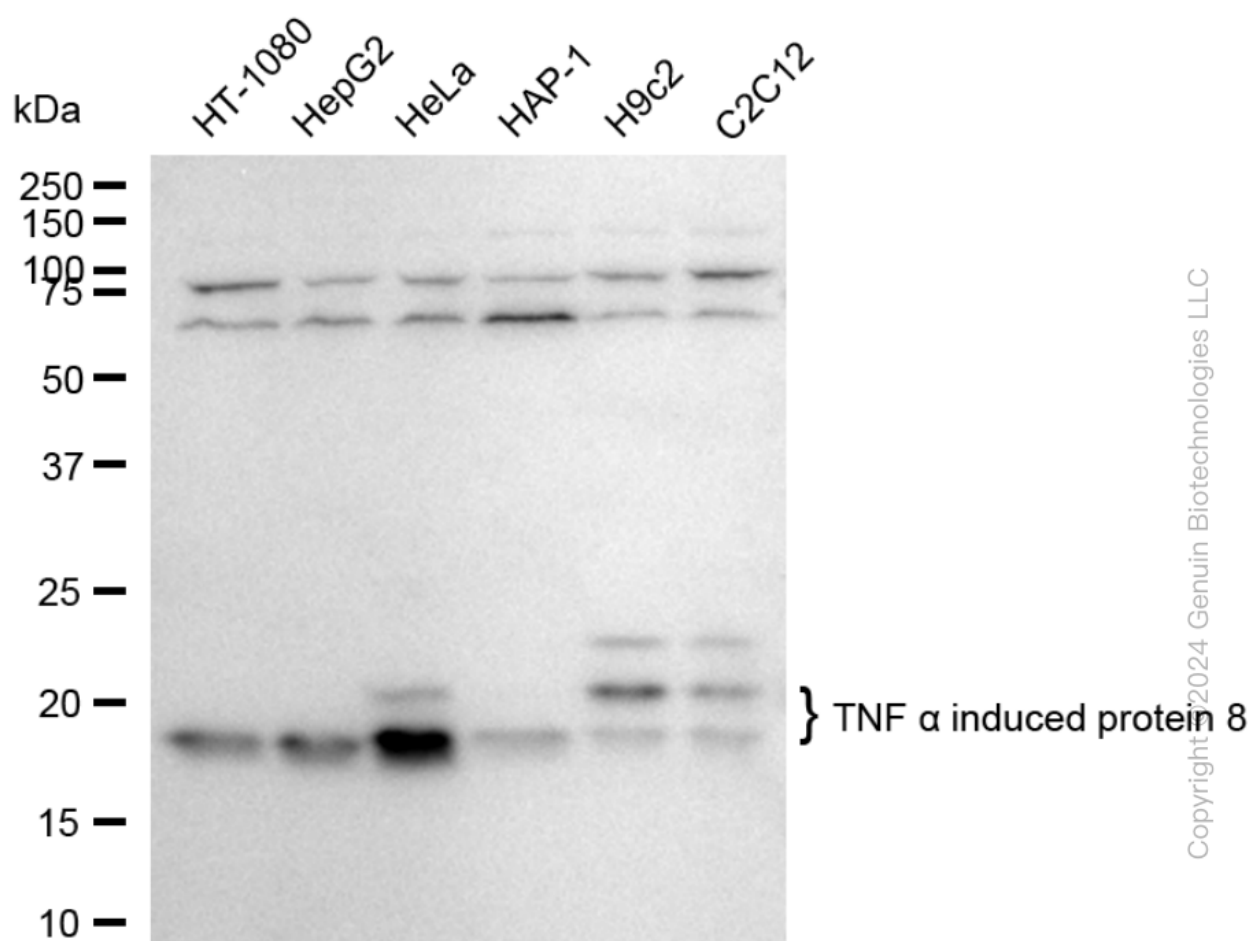
ORDERS

SALES@GENUINBIOTECH.COM
FAX: +1-540-855-7041

WWW.GENUINBIOTECH.COM

KD-Validated Anti-TNF Alpha Induced Protein 8 Recombinant Rabbit Monoclonal Antibody

PAGE 3



Western blotting analysis using anti-TNF alpha induced protein 8 antibody (Cat#62659). Total cell lysates (30 µg) from various cell lines were loaded and separated by SDS-PAGE. The blot was incubated with anti-TNF alpha induced protein 8 antibody (Cat#62659, 1:5,000) and HRP-conjugated goat anti-rabbit secondary antibody (Cat#201, 1:20,000) respectively. Image was developed using FeQ™ ECL Substrate Kit (Cat#226).

SUPPORT

SUPPORT@GENUINBIOTECH.COM
TEL: +1-540-855-7041

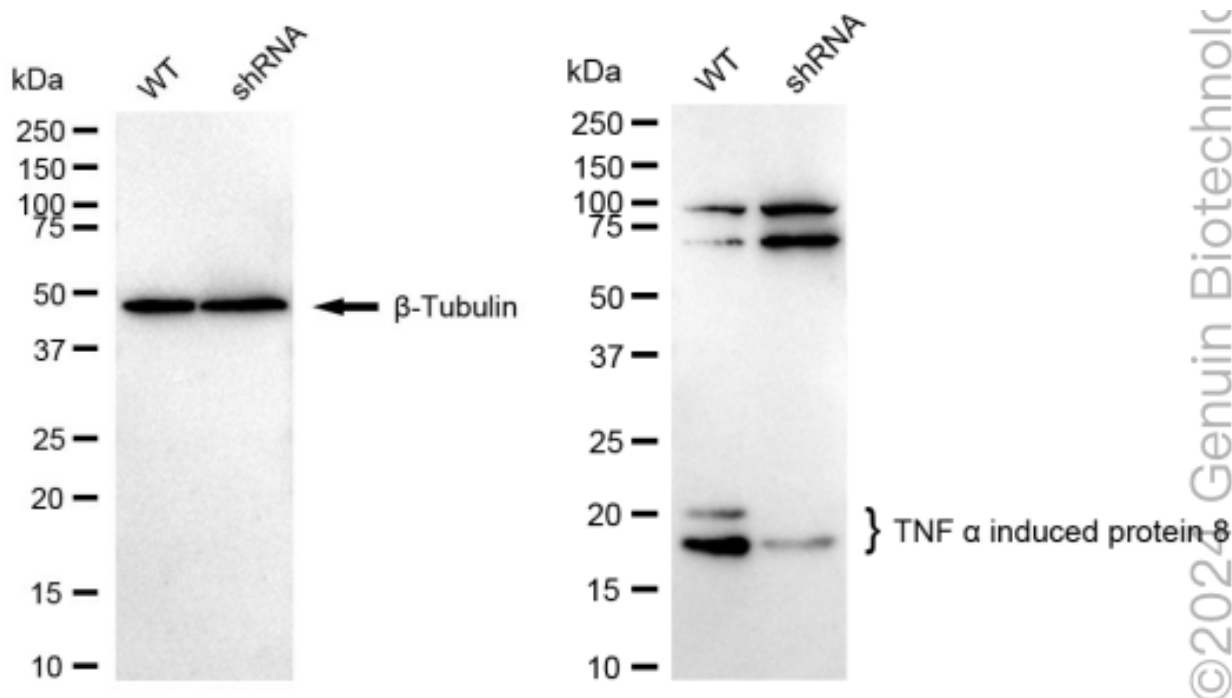
ORDERS

SALES@GENUINBIOTECH.COM
FAX: +1-540-855-7041

WWW.GENUINBIOTECH.COM

KD-Validated Anti-TNF Alpha Induced Protein 8 Recombinant Rabbit Monoclonal Antibody

PAGE 4



Western blotting analysis using anti-TNF alpha induced protein 8 antibody (Cat#62659). TNF alpha induced protein 8 expression in wild type (WT) and TNF alpha induced protein 8 shRNA knockdown (KD) HeLa cells with 20 µg of total cell lysates. β-Tubulin serves as a loading control. The blot was incubated with anti-TNF alpha induced protein 8 antibody (Cat#62659, 1:5,000) and HRP-conjugated goat anti-rabbit secondary antibody (Cat#201, 1:20,000) respectively. Image was developed using NaQ™ ECL Substrate Kit (Cat#716).

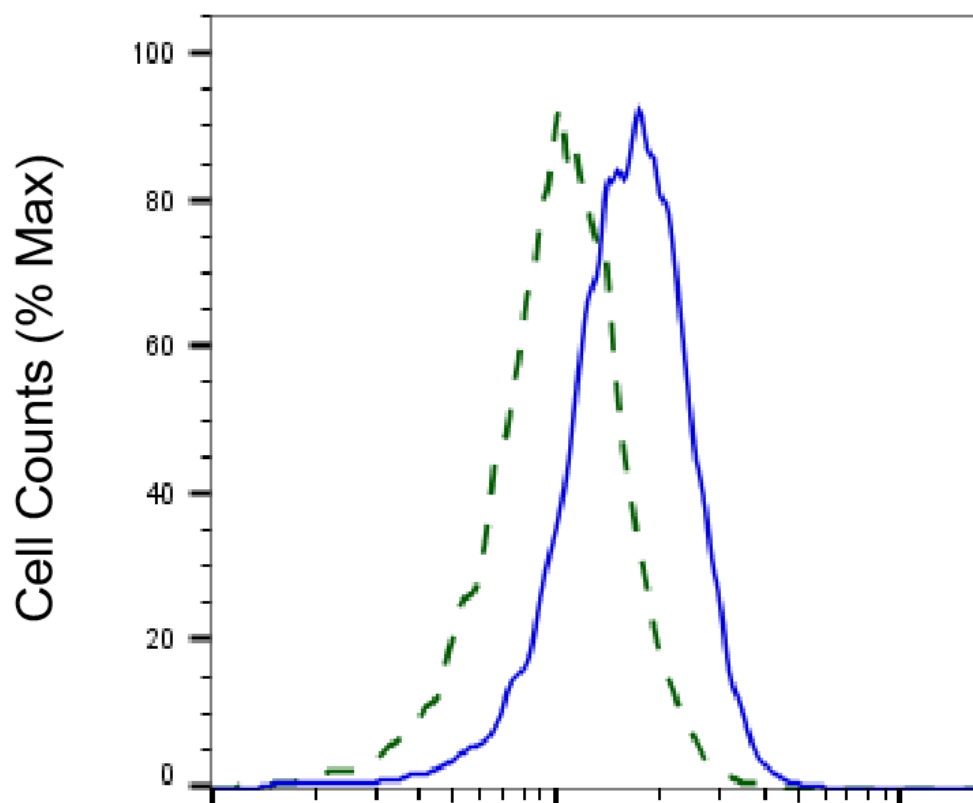
SUPPORT

SUPPORT@GENUINBIOTECH.COM
TEL: +1-540-855-7041

ORDERS

SALES@GENUINBIOTECH.COM
FAX: +1-540-855-7041

WWW.GENUINBIOTECH.COM



Copyright ©2025 Genuin Biotechnologies LLC

TNF alpha induced protein 8-Alexa Fluor® 647

Validation of TNF alpha induced protein 8 knockdown using flow cytometry. Wild-type(WT, Blue) and knockdown(KD, Green) HeLa cells were stained with anti-TNF alpha induced protein 8 antibody (Cat#62659, 1:2,000) and analyzed using BD flow cytometer.