

# KD-Validated Anti-SLC25A12 Recombinant Rabbit Monoclonal Antibody



**Catalog #: 62662**

## Aliases

SLC25A12; Solute Carrier Family 25 Member 12; Aralar; AGC1; Electrogenic Aspartate/Glutamate Antiporter SLC25A12, Mitochondrial; Aralar1; Solute Carrier Family 25 (Mitochondrial Carrier, Aralar), Member 12; Solute Carrier Family 25 (Aspartate/Glutamate Carrier), Member 12; Mitochondrial Aspartate Glutamate Carrier 1; Aspartate/Glutamate Carrier 1; Araceli Hiperlarga; Calcium Binding Mitochondrial Carrier Superfamily Member Aralar1; Calcium-Binding Mitochondrial Carrier Protein Aralar1; ARALAR1; EIEE39; DEE39

## Background

Gene Name: SLC25A12

NCBI Gene Entry: [8604](#)

UniProt Entry: [O75746](#)

## Application Information

Molecular Weight: Predicted, 75 kDa, observed, 72 kDa

Clonality: Rabbit monoclonal antibody

Clone ID: 24GB2340

Species Reactivity: Human, mouse, rat

Applications Tested: Western blotting (WB), flow cytometry (FCM), immunocytochemistry (IC)

## Immunogen

A synthesized peptide derived from human SLC25A12

## Isotype

Rabbit IgG

## Storage Buffer

Supplied in PBS (pH 7.4) containing 50% glycerol, and 0.02% sodium azide.

## Storage

Store at -20 °C for one year.

## Recommended Dilutions

Western Blotting (WB): 1:1,000-1:5,000

Flow Cytometry (FCM): 1:2,000

Immunocytochemistry (IC): 1:100-1:1,000

---

### SUPPORT

SUPPORT@GENUINBIOTECH.COM  
TEL: +1-540-855-7041

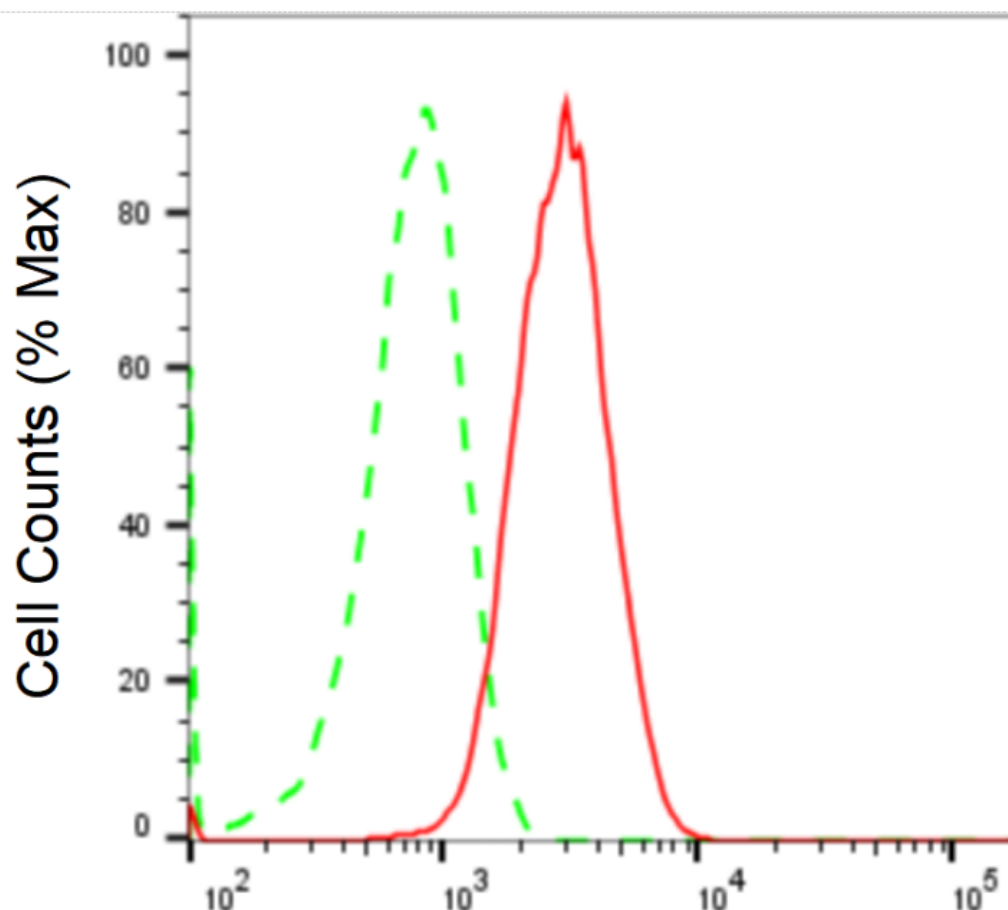
### ORDERS

SALES@GENUINBIOTECH.COM  
FAX: +1-540-855-7041

[WWW.GENUINBIOTECH.COM](http://WWW.GENUINBIOTECH.COM)

**Note:** This product is for research use only.

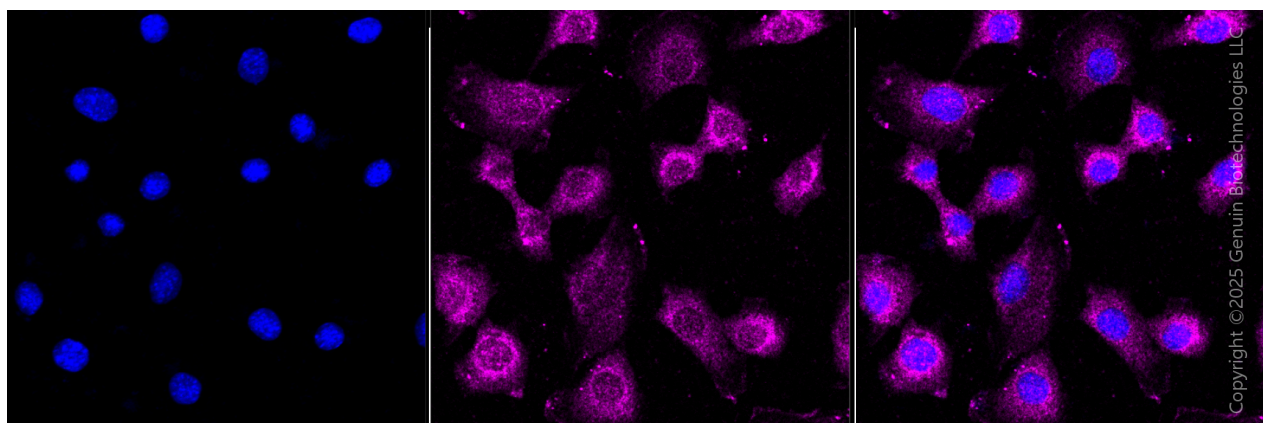
## Validation Data



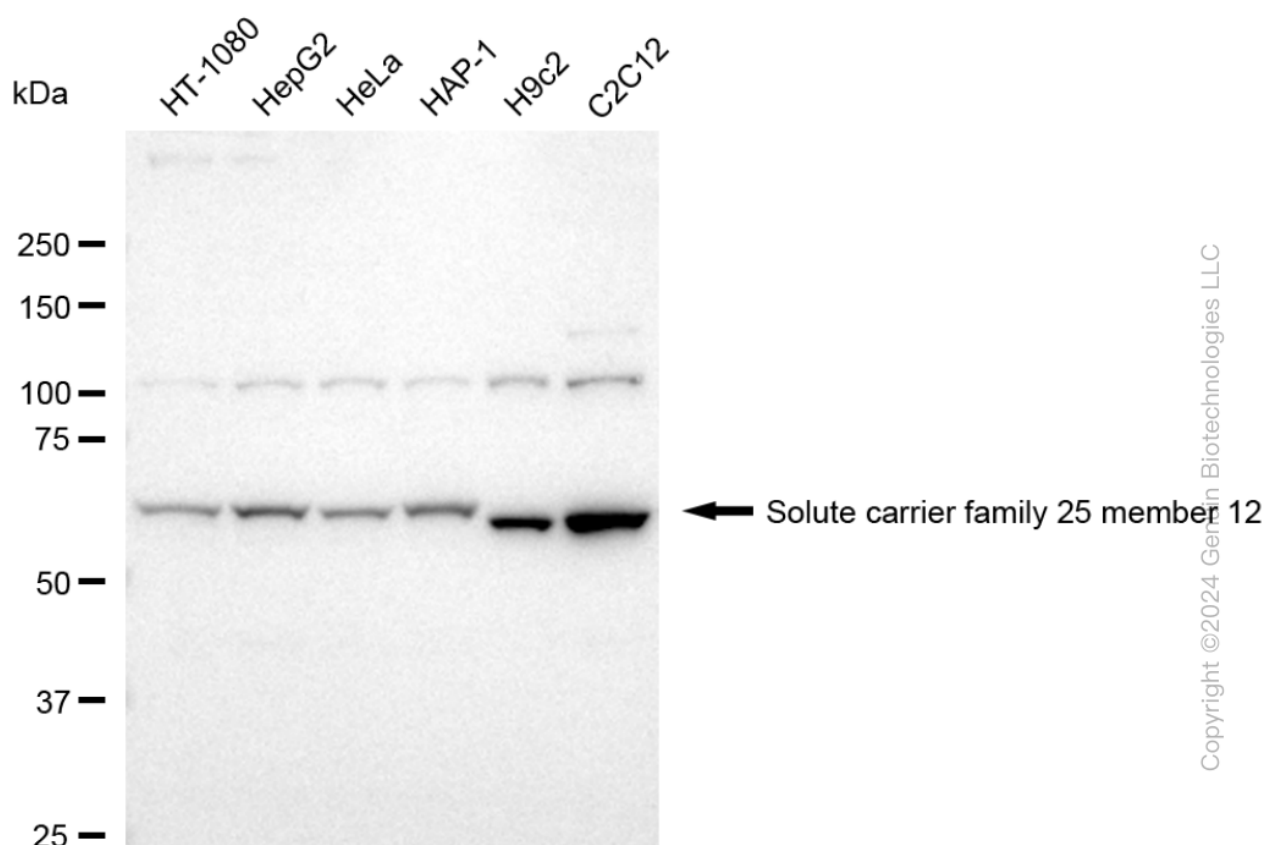
Copyright ©2024 Genuin Biotechnologies LLC

## Solute carrier family 25 member 12-Alexa Fluor® 647

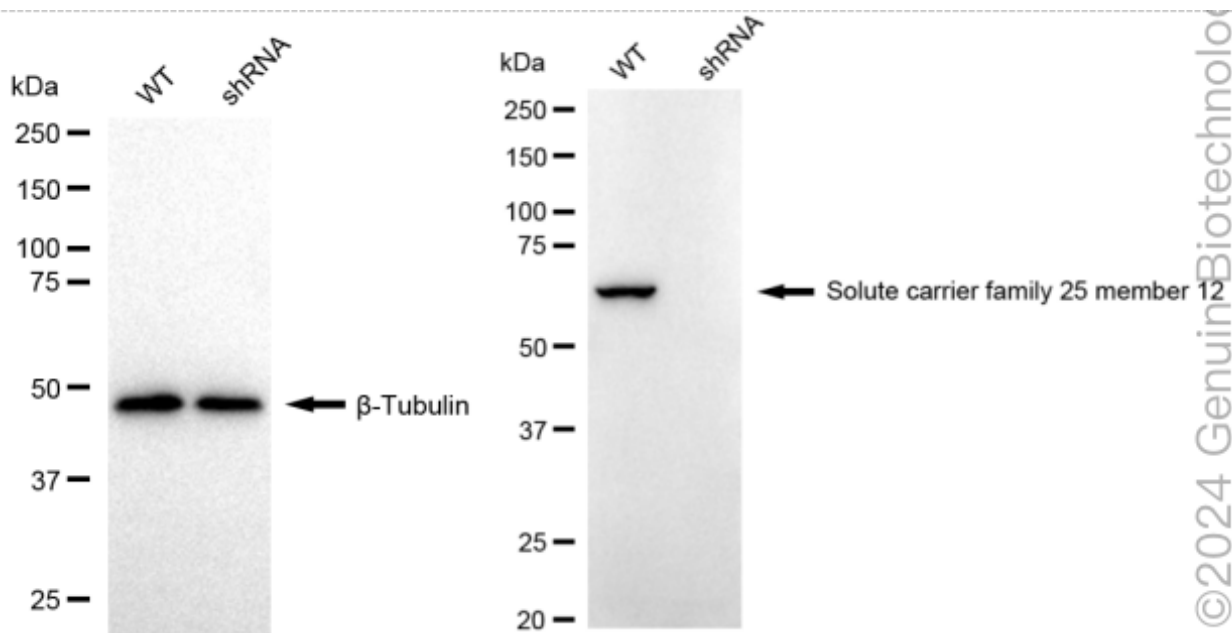
Flow cytometric analysis of Solute carrier family 25 member 12 expression in C2C12 cells using anti-Solute carrier family 25 member 12 antibody (Cat#62662, 1:2,000). Green, isotype control; red, Solute carrier family 25 member 12.



Immunocytochemical staining of C2C12 cells with anti-Solute carrier family 25 member 12 antibody (Cat#62662, 1:1,000) . Nuclei were stained blue with DAPI; Solute carrier family 25 member 12 was stained magenta with Alexa Fluor® 647. Images were taken using Leica stellaris 5. Protein abundance based on laser Intensity and smart gain: Medium. Scale bar, 20  $\mu$ m.



Western blotting analysis using anti-solute carrier family 25 member 12 antibody (Cat#62662). Total cell lysates (30  $\mu$ g) from various cell lines were loaded and separated by SDS-PAGE. The blot was incubated with anti-solute carrier family 25 member 12 antibody (Cat#62662, 1:5,000) and HRP-conjugated goat anti-rabbit secondary antibody (Cat#201, 1:20,000) respectively. Image was developed using FeQ™ ECL Substrate Kit (Cat#226).



Western blotting analysis using anti-Solute carrier family 25 member 12 antibody (Cat#62662). Solute carrier family 25 member 12 expression in wild type (WT) and Solute carrier family 25 member 12 shRNA knockdown (KD) HeLa cells with 20  $\mu$ g of total cell lysates.  $\beta$ -Tubulin serves as a loading control. The blot was incubated with anti-Solute carrier family 25 member 12 antibody (Cat#62662, 1:5,000) and HRP-conjugated goat anti-rabbit secondary antibody (Cat#201, 1:20,000) respectively. Image was developed using NaQ<sup>TM</sup> ECL Substrate Kit (Cat#716).