

KD-Validated Anti-TFAP2A Recombinant Rabbit Monoclonal Antibody



Catalog #: 62671

Aliases

TFAP2A; Transcription Factor AP-2 Alpha; AP-2; AP-2alpha; AP2TF; TFAP2; Transcription Factor AP-2 Alpha (Activating Enhancer Binding Protein 2 Alpha); Activating Enhancer-Binding Protein 2-Alpha; Transcription Factor AP-2-Alpha; AP-2 Transcription Factor; Activator Protein 2; Transcription Factor AP-2 Alpha (Activating Enhancer-Binding Protein 2 Alpha); AP2-Alpha; BOFS

Background

Gene Name: TFAP2A

NCBI Gene Entry: [7020](#)

UniProt Entry: [P05549](#)

Application Information

Molecular Weight: Predicted, 48 kDa, observed, 48 kDa

Clonality: Rabbit monoclonal antibody

Clone ID: 24GB2485

Species Reactivity: Human, rat

Applications Tested: Western blotting (WB), flow cytometry (FCM), immunocytochemistry (IC), immunohistochemistry (IHC)

Immunogen

A synthesized peptide derived from human AP2 alpha

Isotype

Rabbit IgG

Storage Buffer

Supplied in PBS (pH 7.4) containing 50% glycerol, and 0.02% sodium azide.

Storage

Store at -20 °C for one year.

Recommended Dilutions

Western Blotting (WB): 1:1,000-1:5,000

Flow Cytometry (FCM): 1:2,000

Immunocytochemistry (IC): 1:100-1:1,000

SUPPORT

SUPPORT@GENUINBIOTECH.COM
TEL: +1-540-855-7041

ORDERS

SALES@GENUINBIOTECH.COM
FAX: +1-540-855-7041

WWW.GENUINBIOTECH.COM

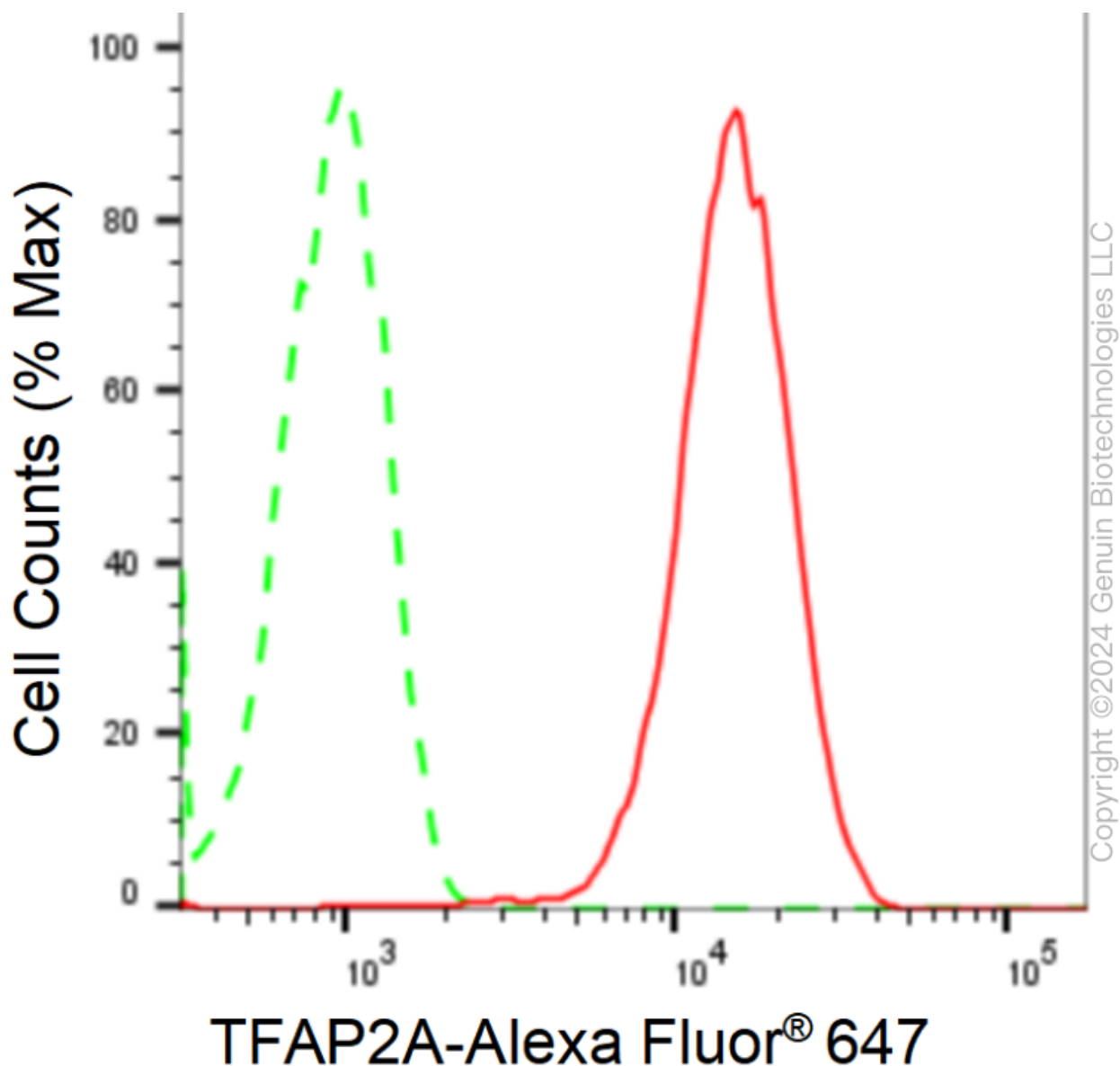
KD-Validated Anti-TFAP2A Recombinant Rabbit Monoclonal Antibody

PAGE 2

Immunohistochemistry (IHC): 1:100-1:200

Note: This product is for research use only.

Validation Data



Flow cytometric analysis of TFAP2A expression in HepG2 cells using anti-TFAP2A antibody (Cat#62671, 1:2,000). Green, isotype control; red, TFAP2A.

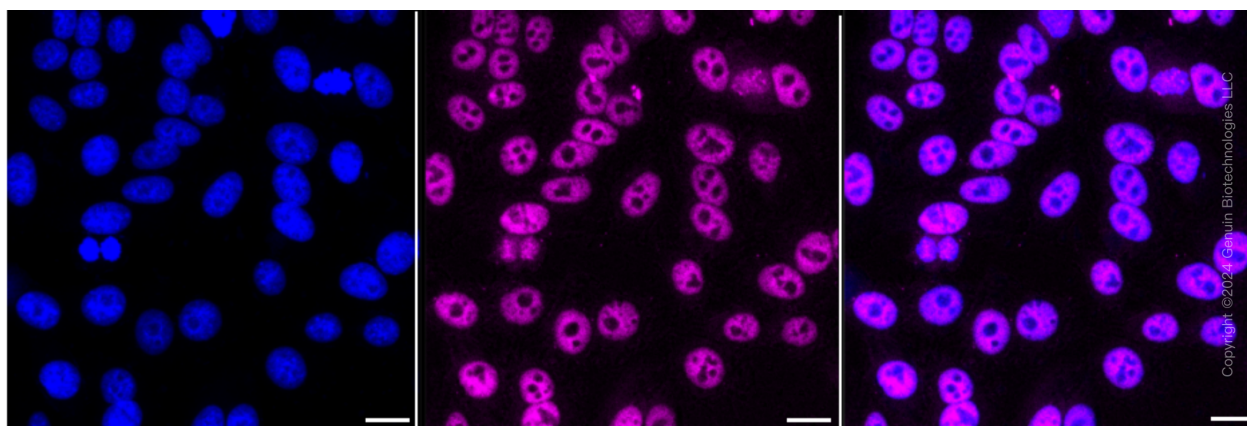
SUPPORT

SUPPORT@GENUINBIOTECH.COM
TEL: +1-540-855-7041

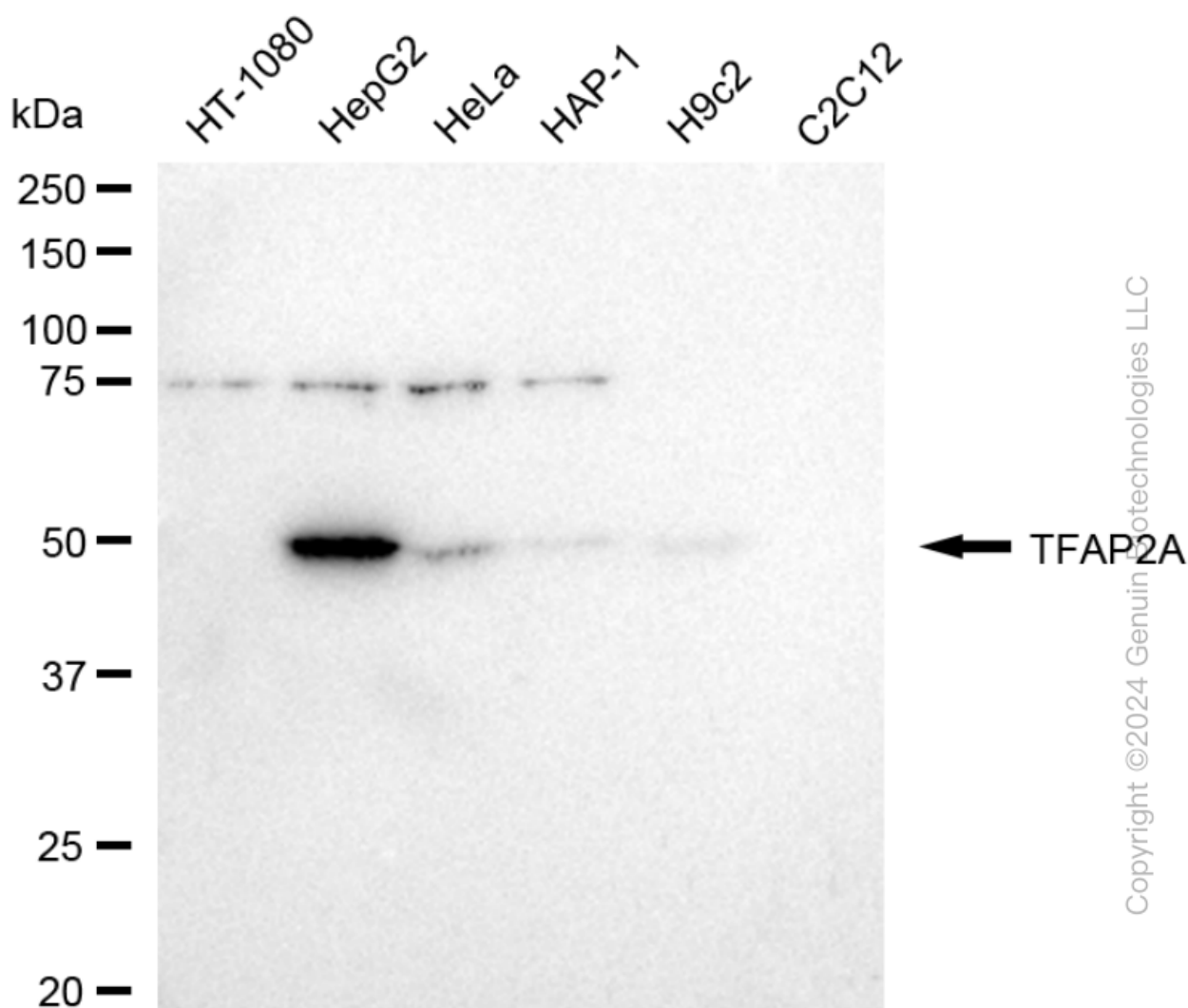
ORDERS

SALES@GENUINBIOTECH.COM
FAX: +1-540-855-7041

WWW.GENUINBIOTECH.COM



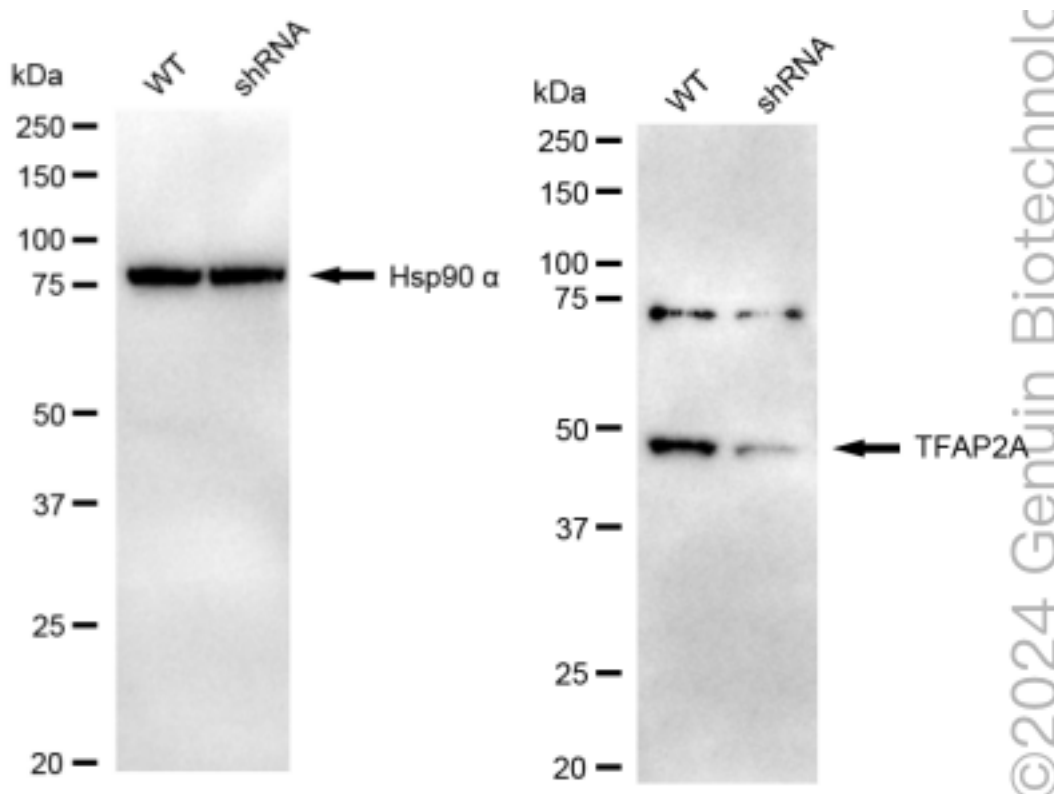
Immunocytochemical staining of HepG2 cells with anti-TFAP2A antibody (Cat#62671, 1:1,000). Nuclei were stained blue with DAPI; TFAP2A was stained magenta with Alexa Fluor® 647. Images were taken using Leica stellaris 5. Protein abundance based on laser Intensity and smart gain: Medium. Scale bar: 20 μ m.



KD-Validated Anti-TFAP2A Recombinant Rabbit Monoclonal Antibody

PAGE 4

Western blotting analysis using anti-TFAP2A antibody (Cat#62671). Total cell lysates (30 μ g) from various cell lines were loaded and separated by SDS-PAGE. The blot was incubated with anti-TFAP2A antibody (Cat#62671, 1:5,000) and HRP-conjugated goat anti-rabbit secondary antibody (Cat#201, 1:20,000) respectively. Image was developed using FeQ™ ECL Substrate Kit (Cat#226).



Western blotting analysis using anti-TFAP2A antibody (Cat#62671). TFAP2A expression in wild type (WT) and TFAP2A shRNA knockdown (KD) HeLa cells with 20 μ g of total cell lysates. Hsp90 α serves as a loading control. The blot was incubated with anti-TFAP2A antibody (Cat#62671, 1:5,000) and HRP-conjugated goat anti-rabbit secondary antibody (Cat#201, 1:20,000) respectively. Image was developed using NaQ™ ECL Substrate Kit (Cat#716).

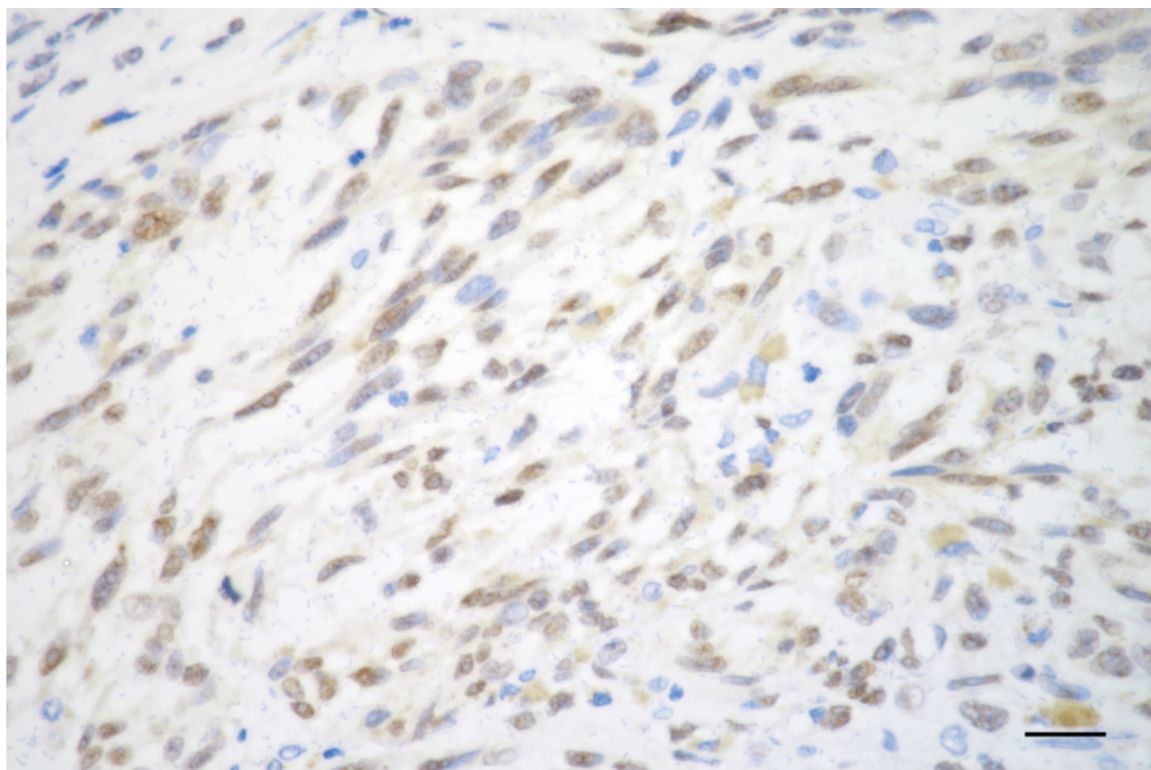
SUPPORT

SUPPORT@GENUINBIOTECH.COM
TEL: +1-540-855-7041

ORDERS

SALES@GENUINBIOTECH.COM
FAX: +1-540-855-7041

WWW.GENUINBIOTECH.COM



Copyright ©2025 Genuin Biotechnologies LLC

Immunohistochemistry was performed on paraffin-embedded human breast carcinoma using anti-glial fibrillary acidic protein antibody (Cat#62671, 1:200). Antigen retrieval was done in sodium citrate buffer (pH 6.0). DAB was used for detection, with hematoxylin counterstaining. Images were acquired using a Nikon Ci-L Plus microscope (40× objective). Scale bar: 25 µm.