

KD-Validated Anti-Tropomyosin 1 Recombinant Rabbit Monoclonal Antibody



Catalog #: 62674

Aliases

TPM1; Tropomyosin 1; C15orf13; Cardiomyopathy, Hypertrophic 3; Tropomyosin Alpha-1 Chain; CMH3; TMSA; Chromosome 15 Open Reading Frame 13; Epididymis Secretory Protein Li 265; Sarcomeric Tropomyosin Kappa; Tropomyosin 1 (Alpha); Alpha-Tropomyosin; Tropomyosin-1; HEL-S-265; HTM-Alpha; CMD1Y; LVNC9

Background

Gene Name: TPM1

NCBI Gene Entry: [7168](#)

UniProt Entry: [P09493](#)

Application Information

Molecular Weight: Predicted, 33 kDa, observed, 36 kDa

Clonality: Rabbit monoclonal antibody

Clone ID: 24GB2545

Species Reactivity: Human

Applications Tested: Western blotting (WB), flow cytometry (FCM), immunocytochemistry (IC)

Immunogen

A synthesized peptide derived from human Tropomyosin 1

Isotype

Rabbit IgG

Storage Buffer

Supplied in PBS (pH 7.4) containing 50% glycerol, and 0.02% sodium azide.

Storage

Store at -20 °C for one year.

Recommended Dilutions

Western Blotting (WB): 1:1,000-1:5,000, Flow Cytometry (FCM): 1:2,000, Immunocytochemistry (IC): 1:100-1:1,000

Note: This product is for research use only.

SUPPORT

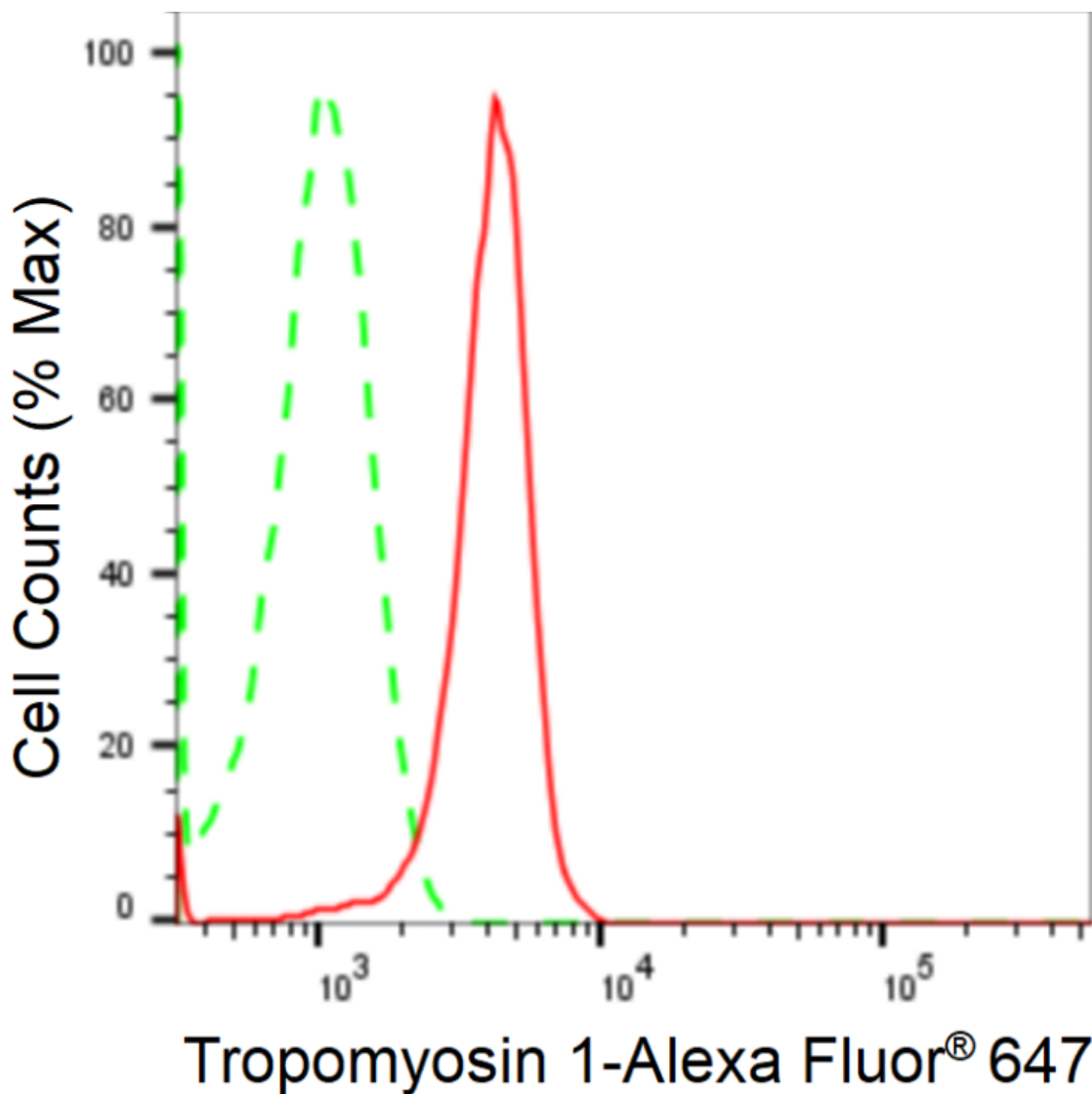
SUPPORT@GENUINBIOTECH.COM
TEL: +1-540-855-7041

ORDERS

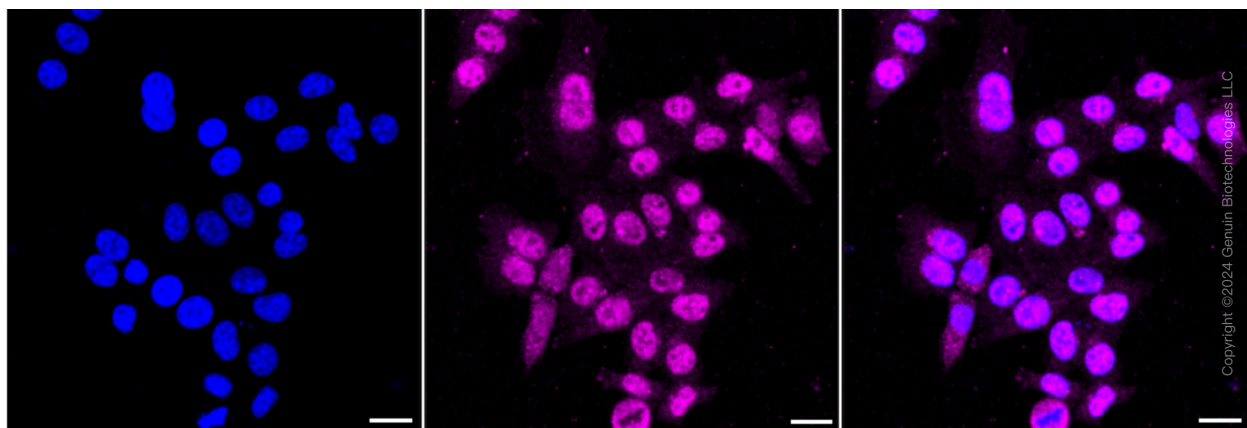
SALES@GENUINBIOTECH.COM
FAX: +1-540-855-7041

WWW.GENUINBIOTECH.COM

Validation Data



Flow cytometric analysis of Tropomyosin 1 expression in HepG2 cells using anti-Tropomyosin 1 antibody (Cat#62674, 1:2,000). Green, isotype control; red, Tropomyosin 1.



SUPPORT

SUPPORT@GENUINBIOTECH.COM
TEL: +1-540-855-7041

ORDERS

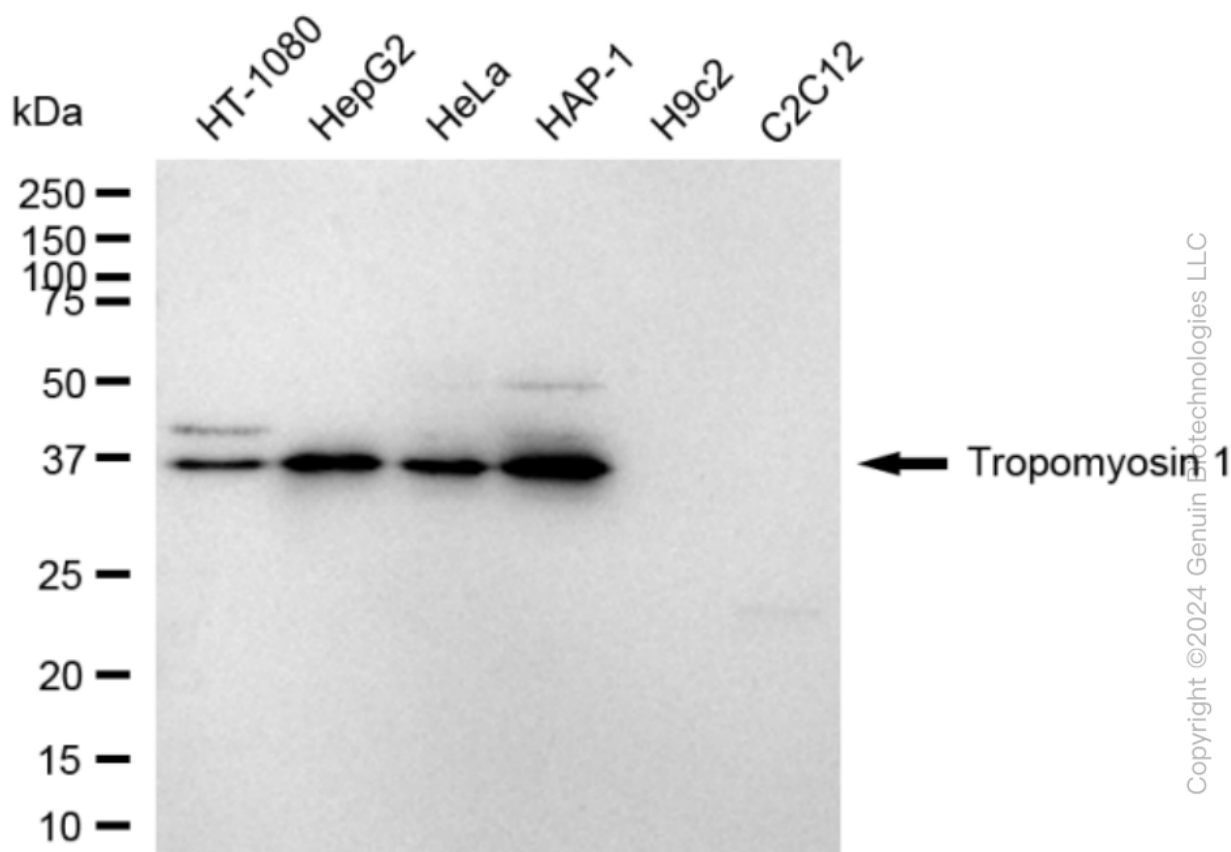
SALES@GENUINBIOTECH.COM
FAX: +1-540-855-7041

WWW.GENUINBIOTECH.COM

KD-Validated Anti-Tropomyosin 1 Recombinant Rabbit Monoclonal Antibody

PAGE 3

Immunocytochemical staining of HepG2 cells with anti-Tropomyosin 1 antibody (Cat#62674, 1:1,000). Nuclei were stained blue with DAPI; Tropomyosin 1 was stained magenta with Alexa Fluor® 647. Images were taken using Leica stellaris 5. Protein abundance based on laser Intensity and smart gain: Medium. Scale bar: 20 μ m.



Western blotting analysis using anti-Tropomyosin 1 antibody (Cat#62674). Total cell lysates (30 μ g) from various cell lines were loaded and separated by SDS-PAGE. The blot was incubated with anti-Tropomyosin 1 antibody (Cat#62674, 1:5,000) and HRP-conjugated goat anti-rabbit secondary antibody (Cat#201, 1:20,000) respectively. Image was developed using FeQ™ ECL Substrate Kit (Cat#226).

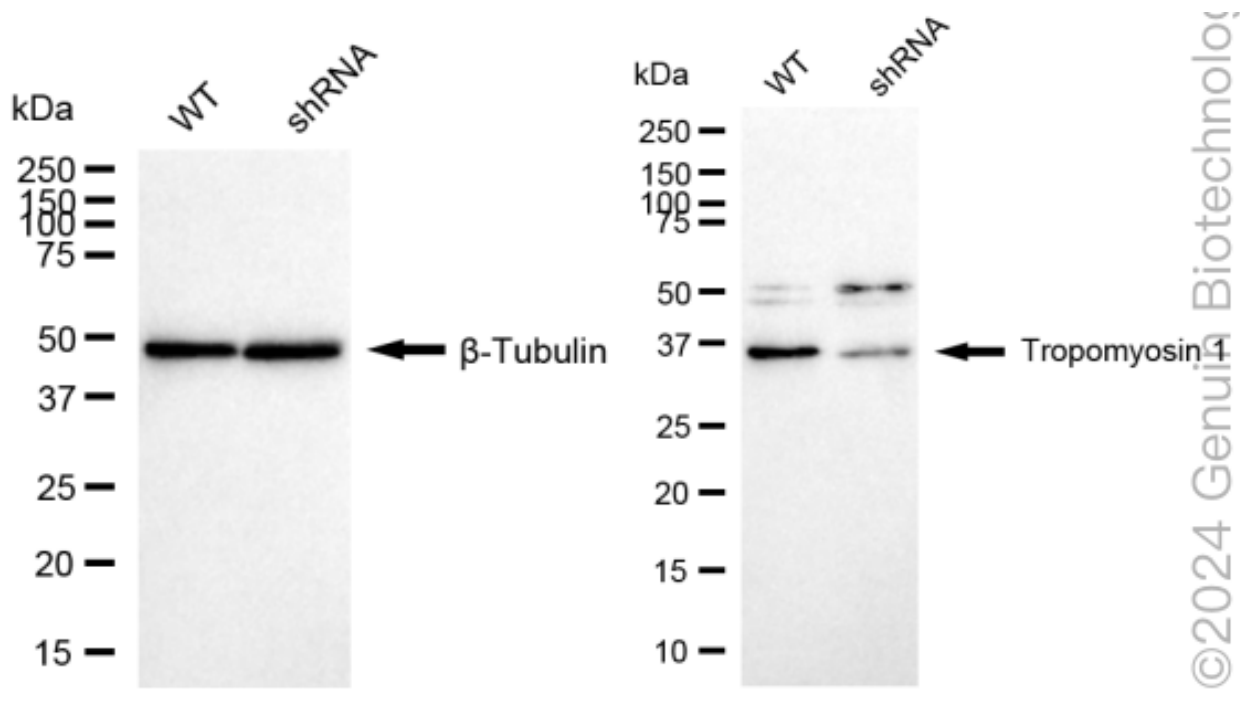
SUPPORT

SUPPORT@GENUINBIOTECH.COM
TEL: +1-540-855-7041

ORDERS

SALES@GENUINBIOTECH.COM
FAX: +1-540-855-7041

WWW.GENUINBIOTECH.COM



Western blotting analysis using anti-Tropomyosin 1 antibody (Cat#62674). Tropomyosin 1 expression in wild type (WT) and Tropomyosin 1 shRNA knockdown (KD) HeLa cells with 20 μ g of total cell lysates. β -Tubulin serves as a loading control. The blot was incubated with anti-Tropomyosin 1 antibody (Cat#62674, 1:5,000) and HRP-conjugated goat anti-rabbit secondary antibody (Cat#201, 1:20,000) respectively. Image was developed using NaQ™ ECL Substrate Kit (Cat#716).