

KD-Validated Anti-Somatostatin Receptor 5 Recombinant Rabbit Monoclonal Antibody



Catalog #: 62679

Aliases

SSTR5; Somatostatin Receptor 5; Somatostatin Receptor Type 5; SS-5-R; SST5; Somatostatin Receptor Subtype 5; SS5-R; SS5R

Background

Gene Name: SSTR5

NCBI Gene Entry: [6755](#)

UniProt Entry: [P35346](#)

Application Information

Molecular Weight: Predicted, 39 kDa, observed, 42 kDa

Clonality: Rabbit monoclonal antibody

Clone ID: 24GB2600

Species Reactivity: Human, mouse, rat

Applications Tested: Western blotting (WB), flow cytometry (FCM), immunocytochemistry (IC)

Immunogen

A synthesized peptide derived from human SSTR5

Isotype

Rabbit IgG

Storage Buffer

Supplied in PBS (pH 7.4) containing 50% glycerol, and 0.02% sodium azide.

Storage

Store at -20 °C for one year.

Recommended Dilutions

Western Blotting (WB): 1:1,000-1:5,000

Flow Cytometry (FCM): 1:2,000

Immunocytochemistry (IC): 1:100-1:1,000

Note: This product is for research use only.

Validation Data

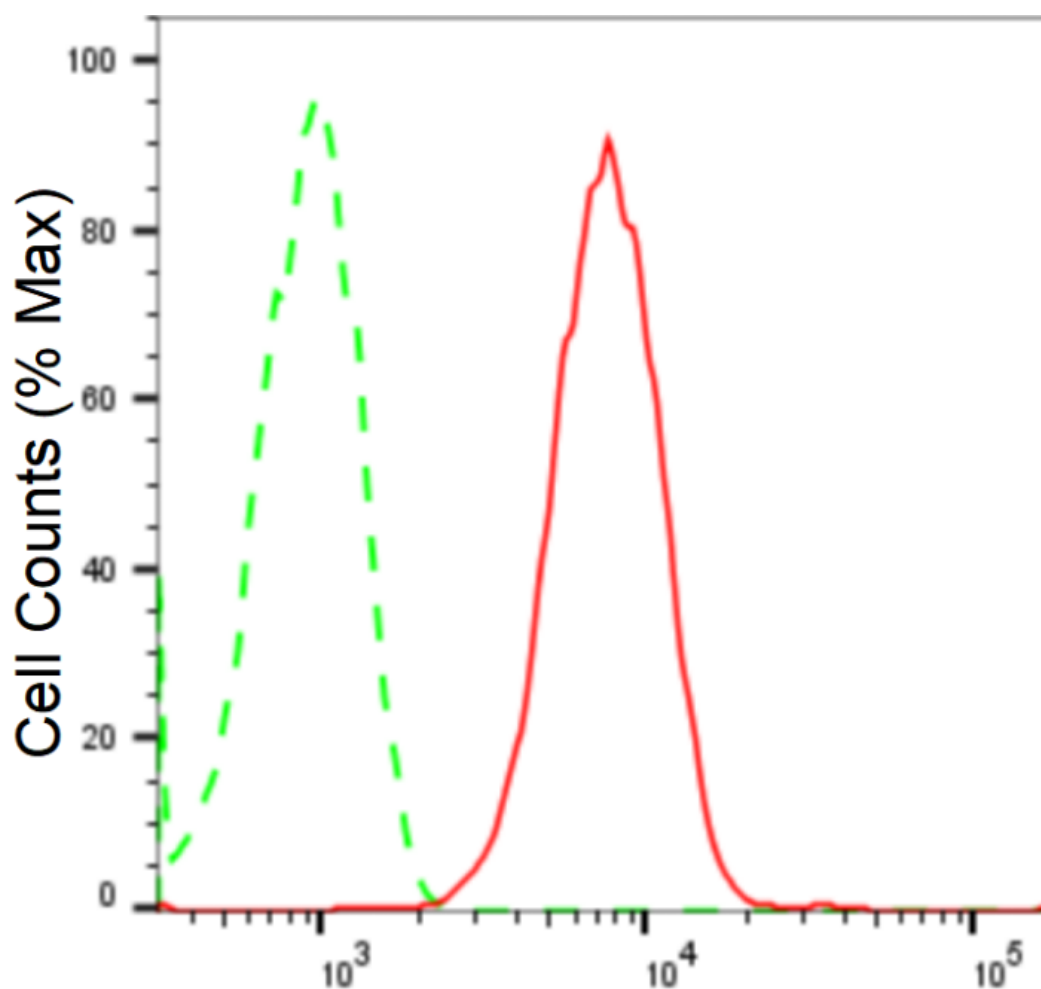
SUPPORT

SUPPORT@GENUINBIOTECH.COM
TEL: +1-540-855-7041

ORDERS

SALES@GENUINBIOTECH.COM
FAX: +1-540-855-7041

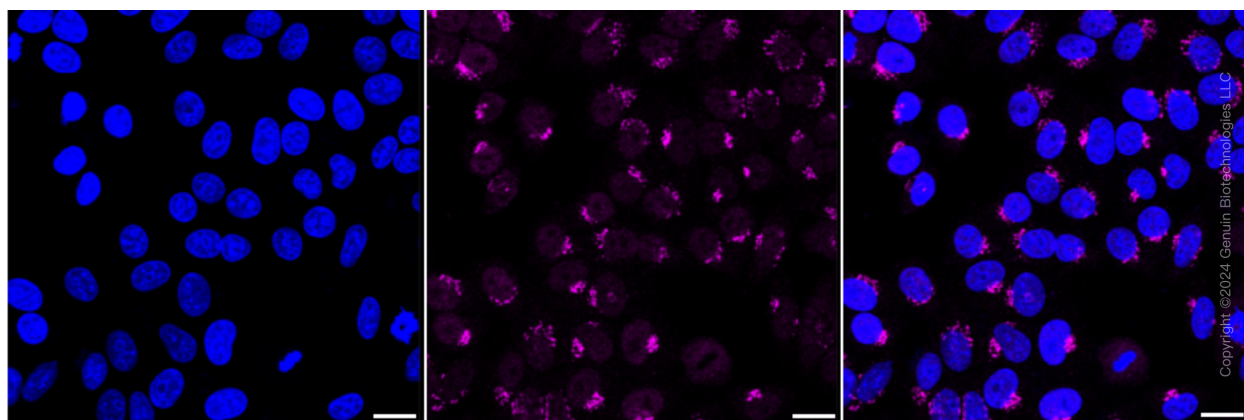
WWW.GENUINBIOTECH.COM



Copyright ©2024 Genuin Biotechnologies LLC

Somatostatin receptor 5-Alexa Fluor[®] 647

Flow cytometric analysis of Somatostatin receptor 5 expression in HepG2 cells using anti-Somatostatin receptor 5 antibody (Cat#62679, 1:2,000). Green, isotype control; red, Somatostatin receptor 5.



Copyright ©2024 Genuin Biotechnologies LLC

Immunocytochemical staining of HepG2 cells with anti-Somatostatin receptor 5 antibody

SUPPORT

SUPPORT@GENUINBIOTECH.COM
TEL: +1-540-855-7041

ORDERS

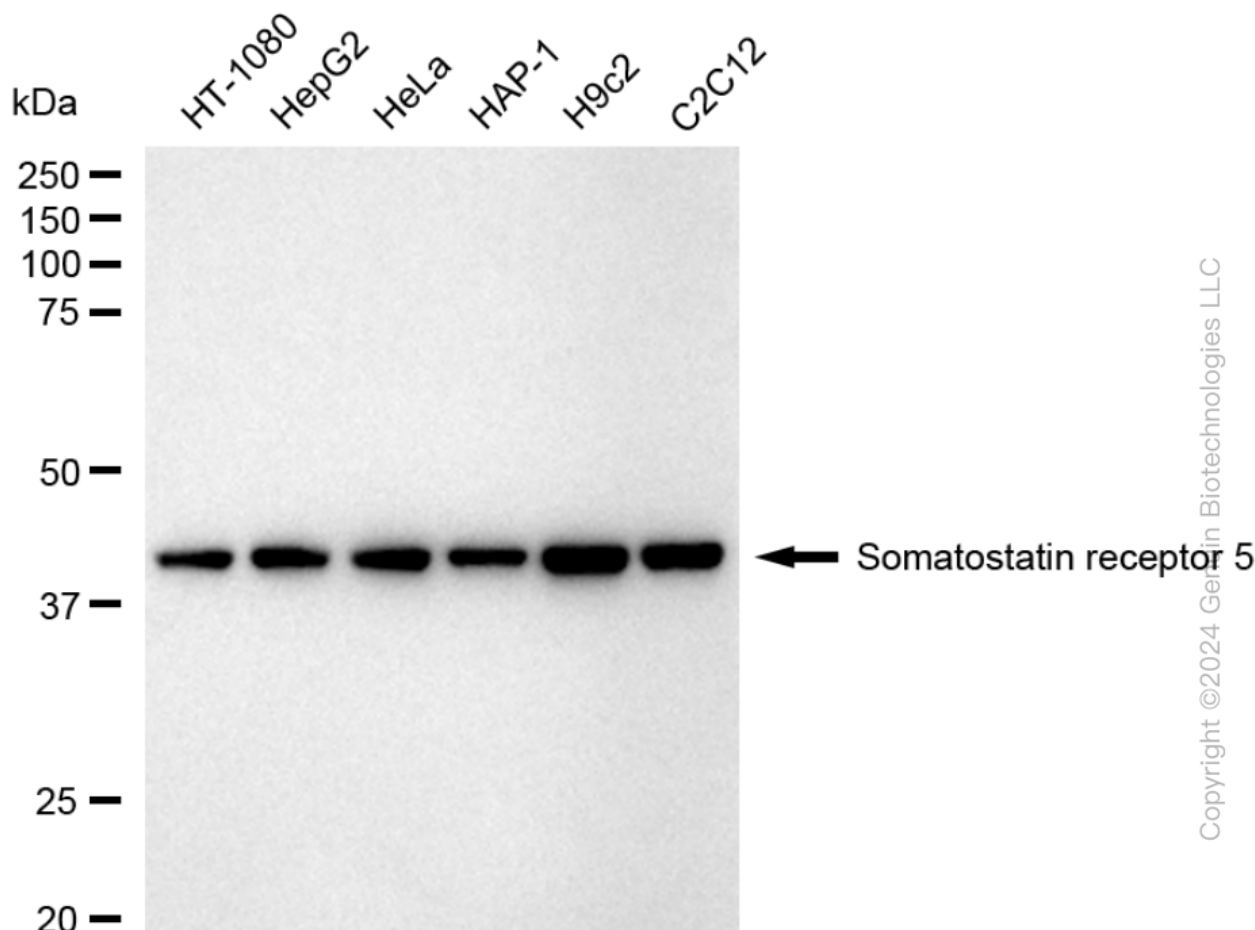
SALES@GENUINBIOTECH.COM
FAX: +1-540-855-7041

WWW.GENUINBIOTECH.COM

KD-Validated Anti-Somatostatin Receptor 5 Recombinant Rabbit Monoclonal Antibody

PAGE 3

(Cat#62679, 1:1,000). Nuclei were stained blue with DAPI; Somatostatin receptor 5 was stained magenta with Alexa Fluor® 647. Images were taken using Leica stellaris 5. Protein abundance based on laser Intensity and smart gain: High. Scale bar: 20 μ m.



Western blotting analysis using anti-somatostatin receptor 5 antibody (Cat#62679). Total cell lysates (5 μ g) from various cell lines were loaded and separated by SDS-PAGE. The blot was incubated with anti-somatostatin receptor 5 antibody (Cat#62679, 1:5,000) and HRP-conjugated goat anti-rabbit secondary antibody (Cat#201, 1:20,000) respectively. Image was developed using FeQ™ ECL Substrate Kit (Cat#226).

SUPPORT

SUPPORT@GENUINBIOTECH.COM
TEL: +1-540-855-7041

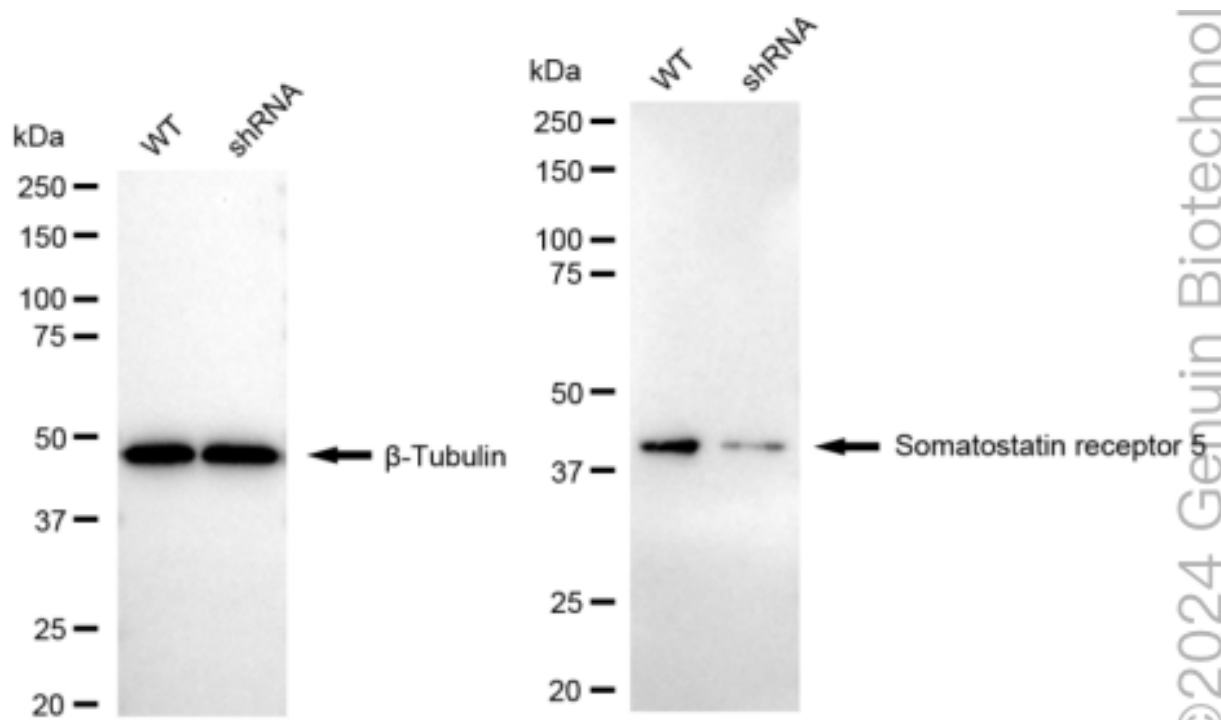
ORDERS

SALES@GENUINBIOTECH.COM
FAX: +1-540-855-7041

WWW.GENUINBIOTECH.COM

KD-Validated Anti-Somatostatin Receptor 5 Recombinant Rabbit Monoclonal Antibody

PAGE 4



Western blotting analysis using anti-Somatostatin receptor 5 antibody (Cat#62679). Somatostatin receptor 5 expression in wild type (WT) and Somatostatin receptor 5 shRNA knockdown (KD) HeLa cells with 20 µg of total cell lysates. β-Tubulin serves as a loading control. The blot was incubated with anti-Somatostatin receptor 5 antibody (Cat#62679, 1:5,000) and HRP-conjugated goat anti-rabbit secondary antibody (Cat#201, 1:20,000) respectively. Image was developed using NaQ™ ECL Substrate Kit (Cat#716).

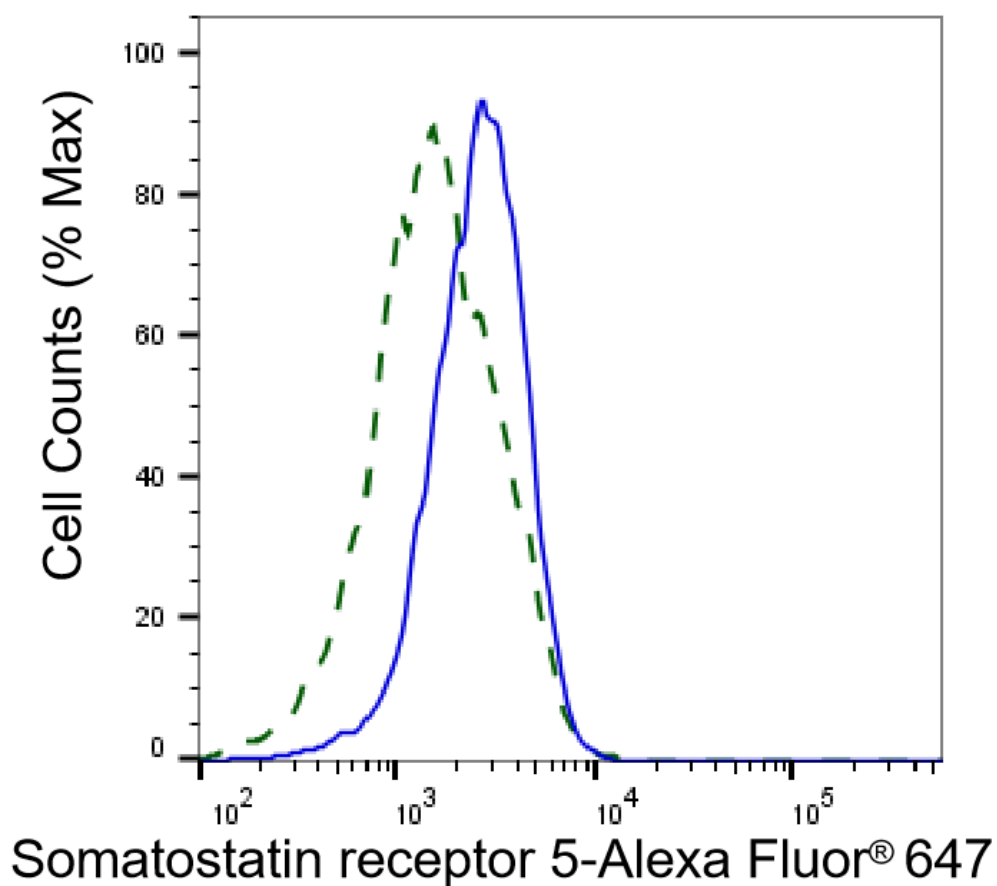
SUPPORT

SUPPORT@GENUINBIOTECH.COM
TEL: +1-540-855-7041

ORDERS

SALES@GENUINBIOTECH.COM
FAX: +1-540-855-7041

WWW.GENUINBIOTECH.COM



Validation of Somatostatin receptor 5 knockdown using flow cytometry. Wild-type(WT, Blue) and knockdown(KD, Green) HeLa cells were stained with anti-Somatostatin receptor 5 antibody (Cat#62679, 1:2,000) and analyzed using BD flow cytometer.