

# KD-Validated Anti-TIMM50 Recombinant Rabbit Monoclonal Antibody



**Catalog #: 62682**

## Aliases

TIMM50; Translocase Of Inner Mitochondrial Membrane 50; TIM50; TIM50L; Mitochondrial Import Inner Membrane Translocase Subunit TIM50; Translocase Of Inner Mitochondrial Membrane 50 Homolog (Yeast); Homolog Of Yeast Tim50; Tim50-Like Protein; MGCA9

## Background

Gene Name: TIMM50

NCBI Gene Entry: [92609](#)

UniProt Entry: [Q3ZCQ8](#)

## Application Information

Molecular Weight: Predicted, 40 kDa, observed, 36 kDa

Clonality: Rabbit monoclonal antibody

Clone ID: 24GB2670

Species Reactivity: Human, mouse

Applications Tested: Western blotting (WB), flow cytometry (FCM), immunocytochemistry (IC)

## Immunogen

A synthesized peptide derived from human TIMM50

## Isotype

Rabbit IgG

## Storage Buffer

Supplied in PBS (pH 7.4) containing 50% glycerol, and 0.02% sodium azide.

## Storage

Store at -20 °C for one year.

## Recommended Dilutions

Western Blotting (WB): 1:1,000-1:5,000

Flow Cytometry (FCM): 1:2,000

Immunocytochemistry (IC): 1:100-1:1,000

**Note:** This product is for research use only.

---

### SUPPORT

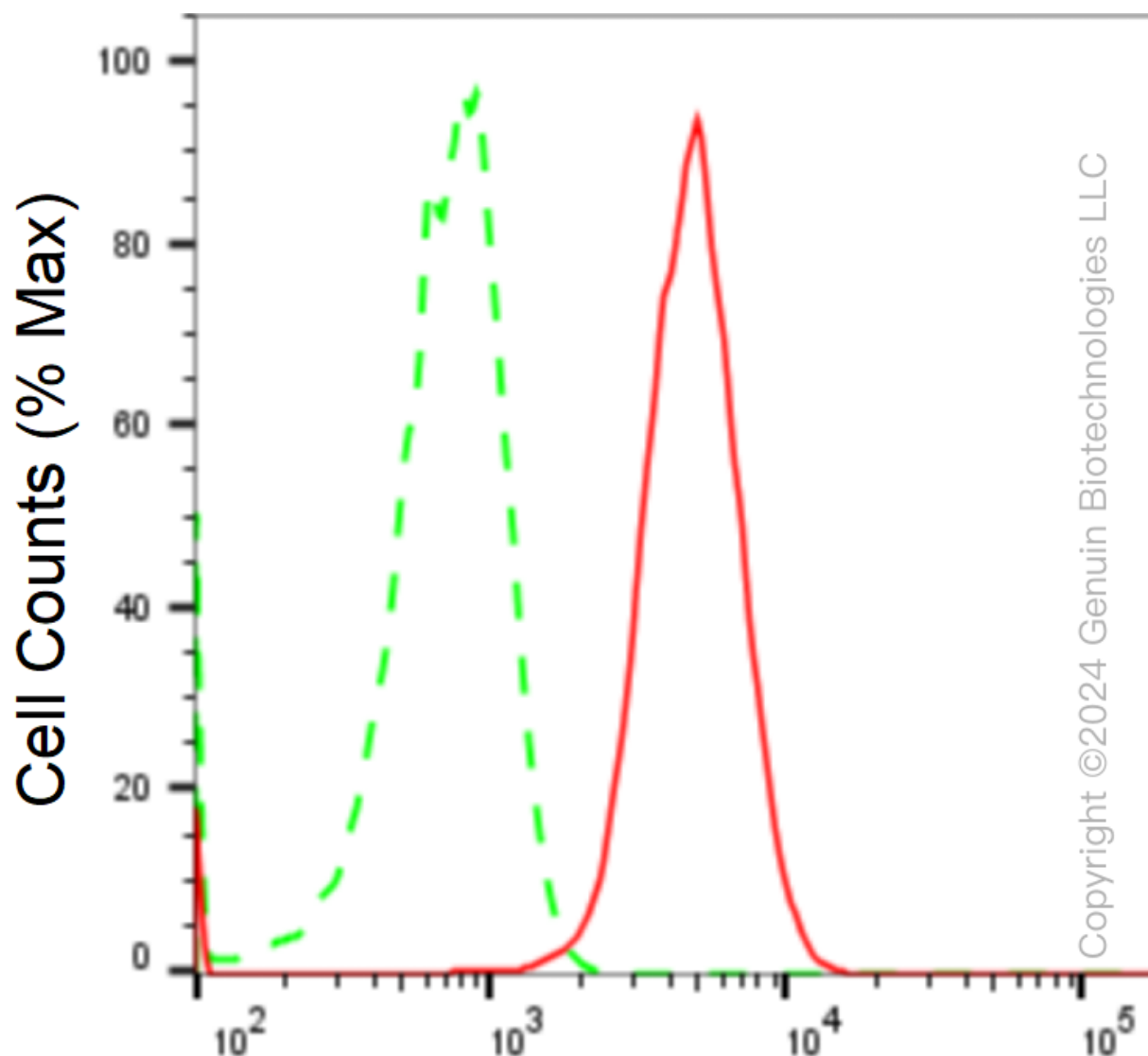
SUPPORT@GENUINBIOTECH.COM  
TEL: +1-540-855-7041

### ORDERS

SALES@GENUINBIOTECH.COM  
FAX: +1-540-855-7041

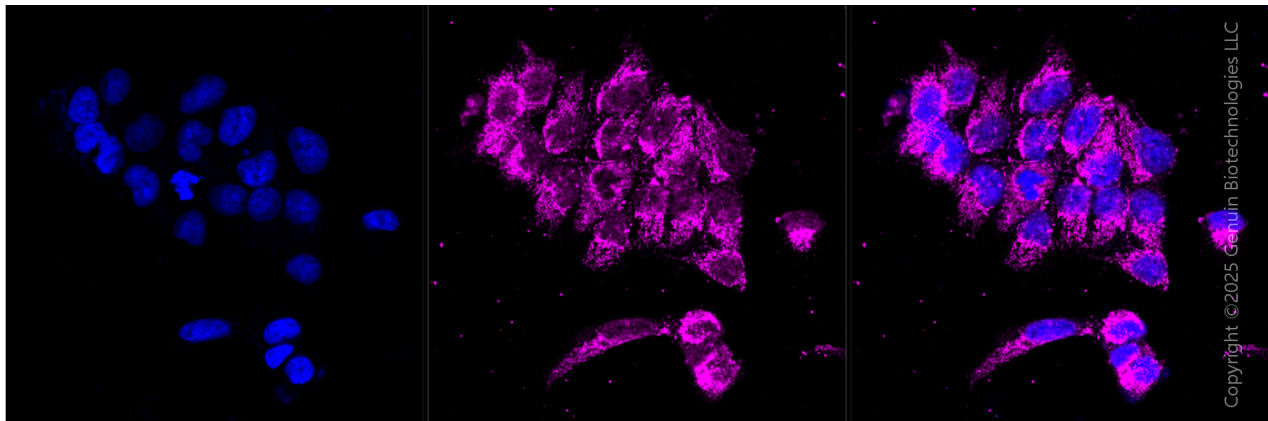
[WWW.GENUINBIOTECH.COM](http://WWW.GENUINBIOTECH.COM)

**Validation Data**

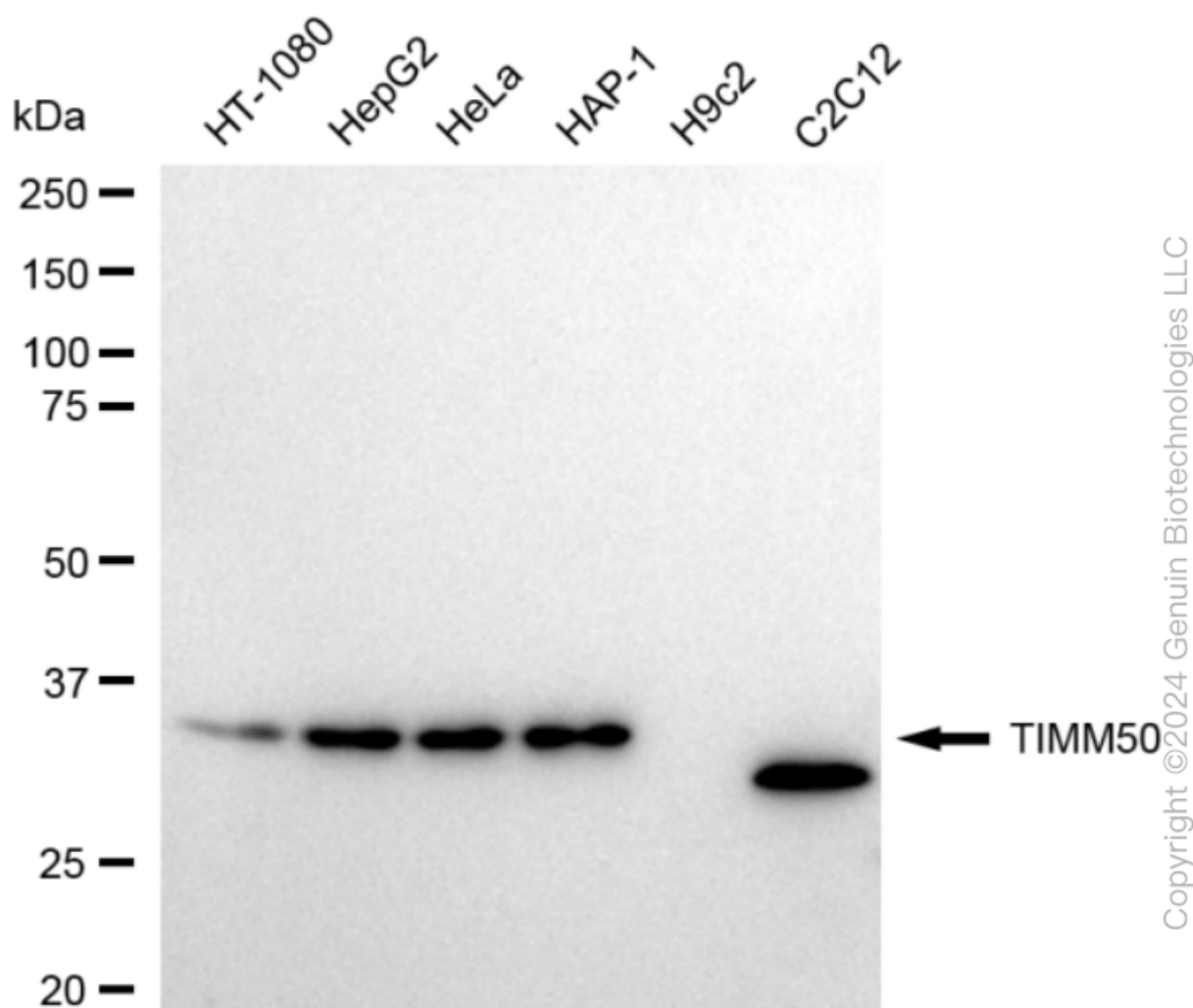


**TIMM50-Alexa Fluor® 647**

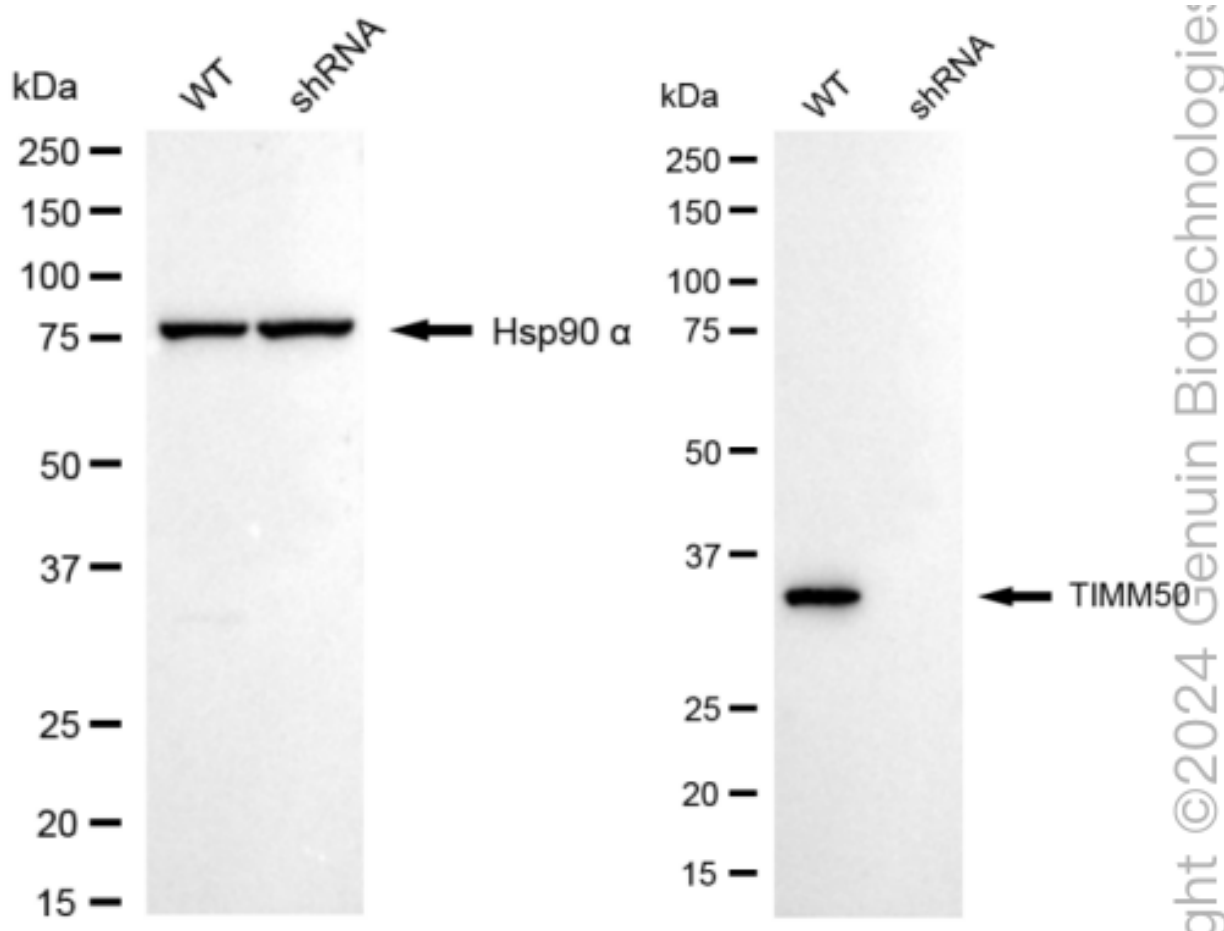
Flow cytometric analysis of TIMM50 expression in HAP-1 cells using anti-TIMM50 antibody (Cat#62682, 1:2,000). Green, isotype control; red, TIMM50.



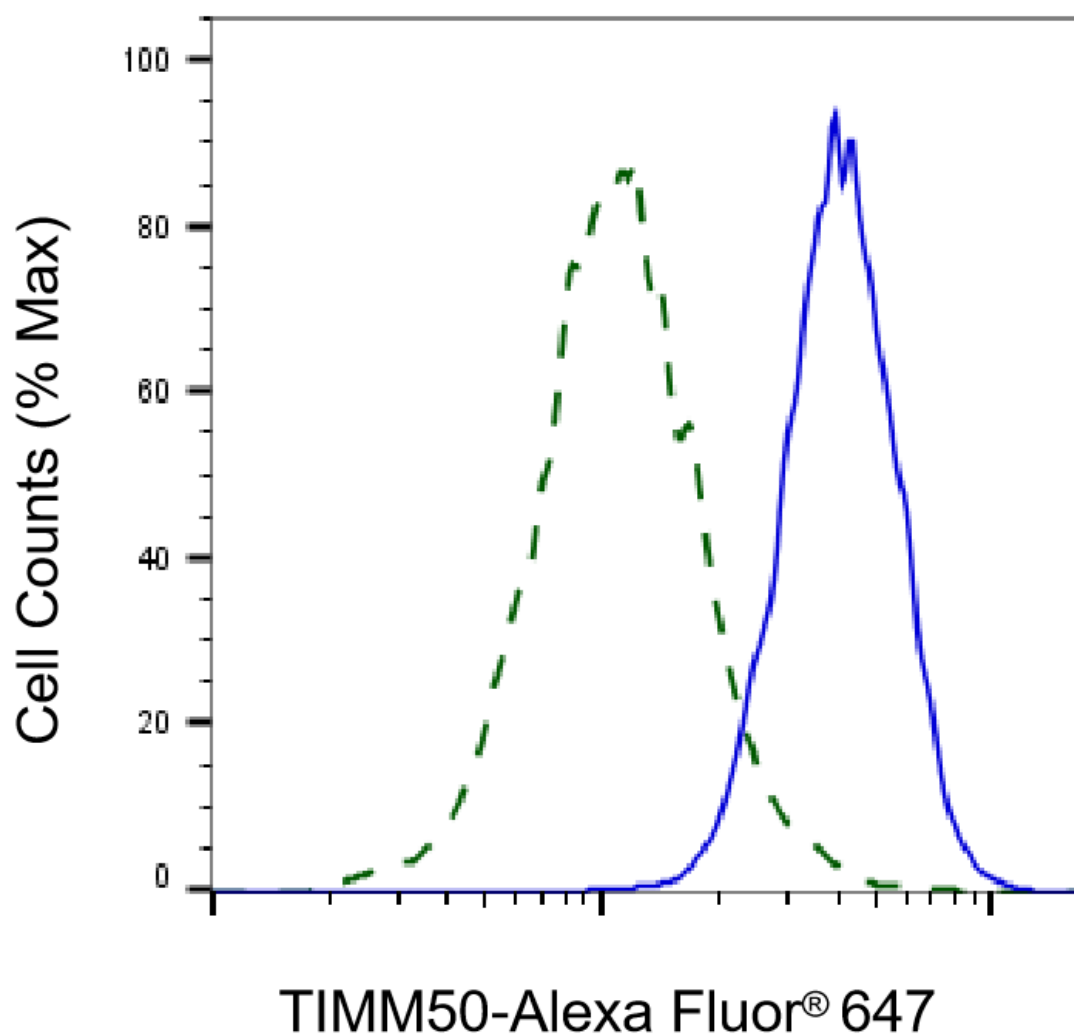
Immunocytochemical staining of HAP1 cells with anti-TIMM50 antibody (Cat#62682, 1:1,000) . Nuclei were stained blue with DAPI; was stained magenta with Alexa Fluor® 647. Images were taken using Leica stellaris 5. Protein abundance based on laser Intensity and smart gain: Medium. Scale bar, 20  $\mu$ m.



Western blotting analysis using anti-TIMM50 antibody (Cat#62682). Total cell lysates (30 µg) from various cell lines were loaded and separated by SDS-PAGE. The blot was incubated with anti-TIMM50 antibody (Cat#62682, 1:5,000) and HRP-conjugated goat anti-rabbit secondary antibody (Cat#201, 1:20,000) respectively. Image was developed using FeQ™ ECL Substrate Kit (Cat#226).

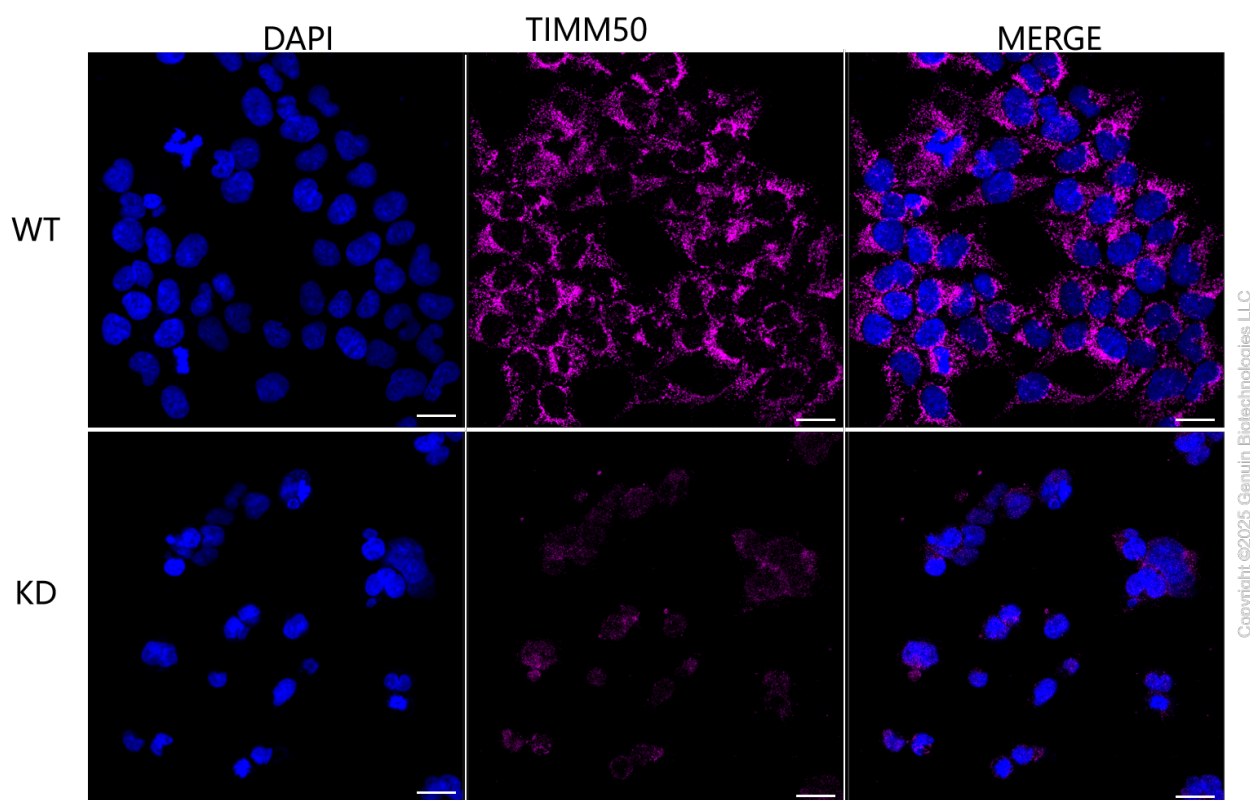


Western blotting analysis using anti-TIMM50 antibody (Cat#62682). TIMM50 expression in wild type (WT) and TIMM50 shRNA knockdown (KD) HeLa cells with 20 µg of total cell lysates. Hsp90 α serves as a loading control. The blot was incubated with anti-TIMM50 antibody (Cat#62682, 1:5,000) and HRP-conjugated goat anti-rabbit secondary antibody (Cat#201, 1:20,000) respectively. Image was developed using NaQ™ ECL Substrate Kit (Cat#716).



Copyright ©2025 Genuin Biotechnologies LLC

Validation of TIMM50 knockdown using flow cytometry. Wild-type(WT, Blue) and knockdown(KD, Green) HeLa cells were stained with anti-TIMM50 antibody (Cat#62682, 1:2,000) and analyzed using BD flow cytometer.



Immunocytochemical staining of HeLa cells using anti-TIMM50 antibody (Cat#62682, 1:1,000), Top panel: wild-type (WT); Bottom panel: TIMM50 shRNA knockdown (KD). Nuclei were stained blue with DAPI; TIMM50 was stained magenta with Alexa Fluor® 647. Scale bar, 20  $\mu$ m. Permeabilization: Triton.