

KD-Validated Anti-Superoxide Dismutase 2 Recombinant Rabbit Monoclonal Antibody



Catalog #: 62706

Aliases

SOD2; Superoxide Dismutase 2; GCInc1; MnSOD; IPOB; GC1; Superoxide Dismutase [Mn], Mitochondrial; Superoxide Dismutase 2, Mitochondrial; EC 1.15.1.1; Epididymis Secretory Sperm Binding Protein; Manganese-Containing Superoxide Dismutase; Gastric Cancer–Associated LncRNA 1; Gastric Cancer-Associated LncRNA 1; Manganese Superoxide Dismutase; Mangano-Superoxide Dismutase; Mn Superoxide Dismutase; Indophenoloxidase B; Mn-SOD; IPO-B; MVCD6

Background

Gene Name: SOD2

NCBI Gene Entry: [6648](#)

UniProt Entry: [P04179](#)

Application Information

Molecular Weight: Predicted, 25 kDa, observed, 25 kDa

Clonality: Rabbit monoclonal antibody

Clone ID: 24GB2135

Species Reactivity: Human, mouse, rat

Applications Tested: Western blotting (WB), immunocytochemistry (IC)

Immunogen

A synthesized peptide derived from human SOD2

Isotype

Rabbit IgG

Storage Buffer

Supplied in PBS (pH 7.4) containing 50% glycerol, and 0.02% sodium azide.

Storage

Store at -20 °C for one year.

Recommended Dilutions

Western Blotting (WB): 1:1,000-1:5,000

Immunocytochemistry (IC): 1:100-1:1,000

SUPPORT

SUPPORT@GENUINBIOTECH.COM
TEL: +1-540-855-7041

ORDERS

SALES@GENUINBIOTECH.COM
FAX: +1-540-855-7041

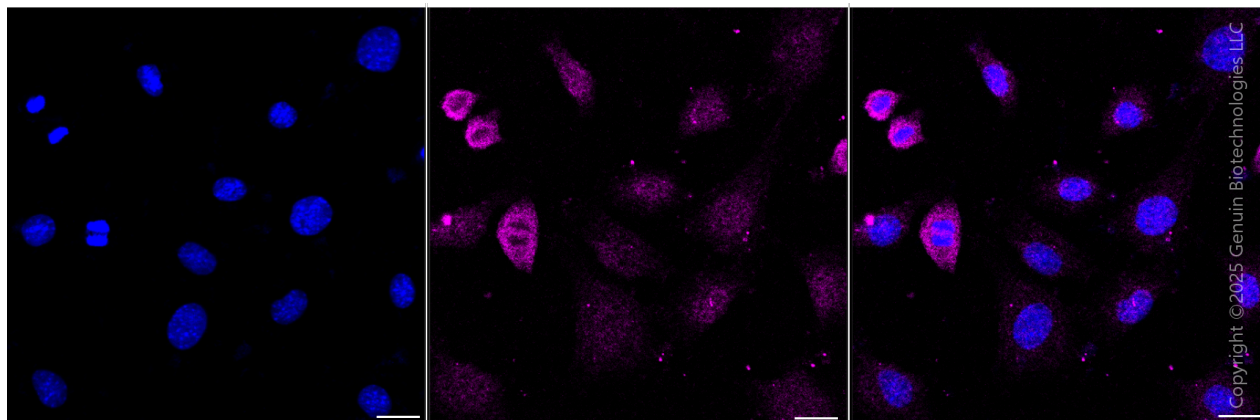
WWW.GENUINBIOTECH.COM

KD-Validated Anti-Superoxide Dismutase 2 Recombinant Rabbit Monoclonal Antibody

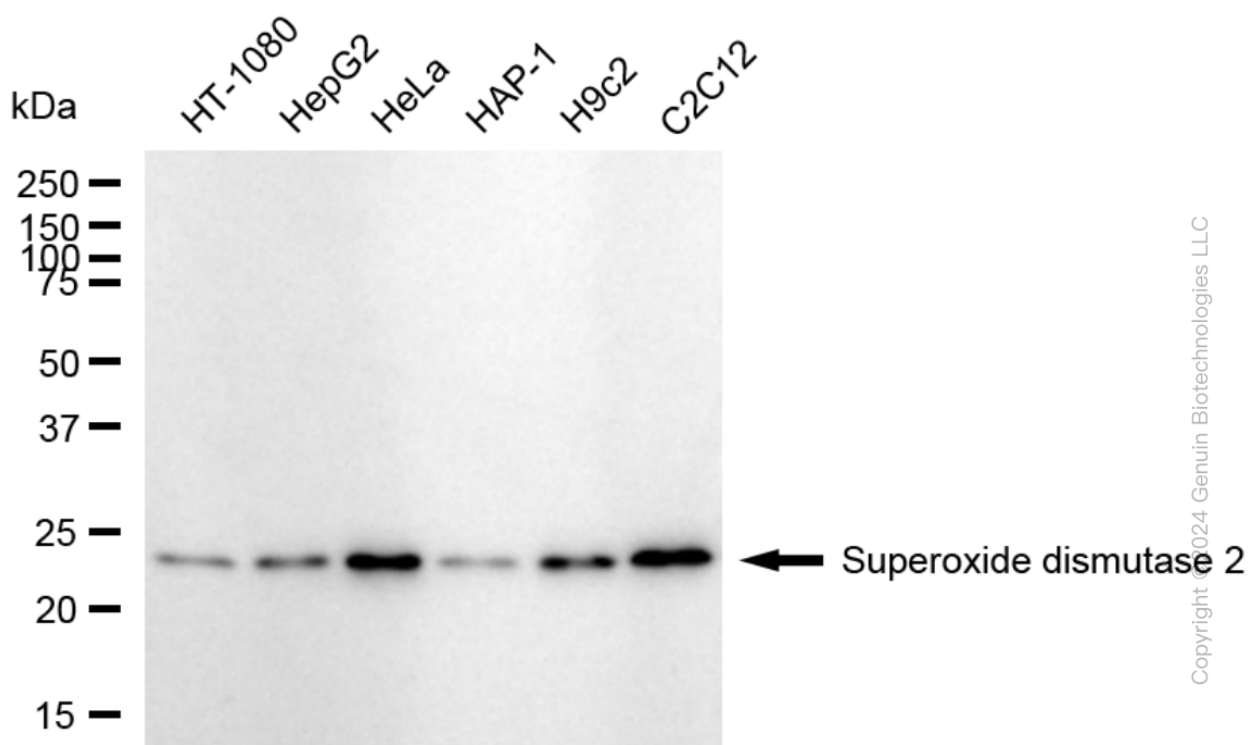
PAGE 2

Note: This product is for research use only.

Validation Data



Immunocytochemical staining of C2C12 cells with anti-Superoxide dismutase 2 antibody (Cat#62706, 1:1,000) . Nuclei were stained blue with DAPI; Superoxide dismutase 2 was stained magenta with Alexa Fluor® 647. Images were taken using Leica stellaris 5. Protein abundance based on laser Intensity and Smart Gain: Low. Scale bar, 20 μ m.



Western blotting analysis using anti-Superoxide dismutase 2 antibody (Cat#62706). Total cell lysates (30 μ g) from various cell lines were loaded and separated by SDS-PAGE. The blot was incubated with anti-Superoxide dismutase 2 antibody (Cat#62706, 1:5,000) and HRP-conjugated goat anti-rabbit secondary antibody (Cat#201, 1:20,000) respectively. Image was developed using

SUPPORT

SUPPORT@GENUINBIOTECH.COM
TEL: +1-540-855-7041

ORDERS

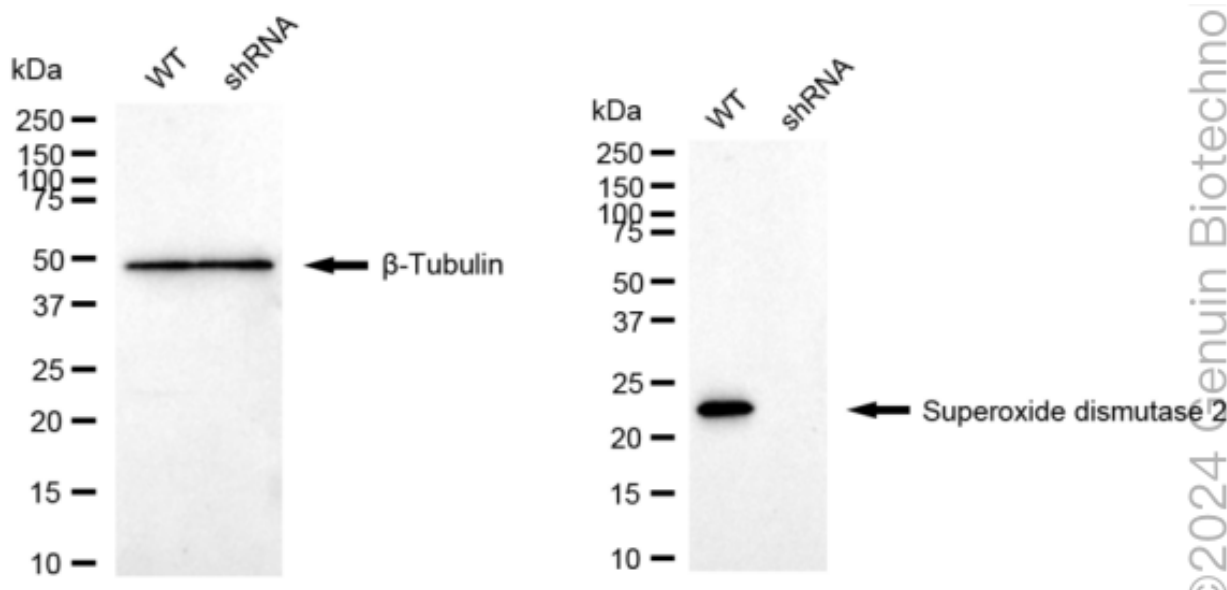
SALES@GENUINBIOTECH.COM
FAX: +1-540-855-7041

WWW.GENUINBIOTECH.COM

KD-Validated Anti-Superoxide Dismutase 2 Recombinant Rabbit Monoclonal Antibody

PAGE 3

FeQ™ ECL Substrate Kit (Cat#226).



Western blotting analysis using anti-Superoxide dismutase 2 antibody (Cat#62706). Superoxide dismutase 2 expression in wild type (WT) and Superoxide dismutase 2 shRNA knockdown (KD) HeLa cells with 20 µg of total cell lysates. β-Tubulin serves as a loading control. The blot was incubated with anti-Superoxide dismutase 2 antibody (Cat#62706, 1:5,000) and HRP-conjugated goat anti-rabbit secondary antibody (Cat#201, 1:20,000) respectively. Image was developed using NaQ™ ECL Substrate Kit (Cat#716).

SUPPORT

SUPPORT@GENUINBIOTECH.COM
TEL: +1-540-855-7041

ORDERS

SALES@GENUINBIOTECH.COM
FAX: +1-540-855-7041

WWW.GENUINBIOTECH.COM