

# KD-Validated Anti-TIA1 Recombinant Rabbit Monoclonal Antibody



**Catalog #: 62711**

## Aliases

TIA1; TIA1 Cytotoxic Granule Associated RNA Binding Protein; TIA-1; T-Cell-Restricted Intracellular Antigen-1; Cytotoxic Granule Associated RNA Binding Protein TIA1; Nucleolysin TIA-1 Isoform P40; TIA1 Cytotoxic Granule-Associated RNA-Binding Protein; P40-TIA-1 (Containing P15-TIA-1); RNA-Binding Protein TIA-1; P40-TIA-1; ALS26; WDM

## Background

Gene Name: TIA1

NCBI Gene Entry: [7072](#)

UniProt Entry: [P31483](#)

## Application Information

Molecular Weight: Predicted, 43 kDa, observed, 43 kDa

Clonality: Rabbit monoclonal antibody

Clone ID: 24GB2175

Species Reactivity: Human, mouse, rat

Applications Tested: Western blotting (WB), flow cytometry (FCM), immunocytochemistry (IC)

## Immunogen

A synthesized peptide derived from human TIA1

## Isotype

Rabbit IgG

## Storage Buffer

Supplied in PBS (pH 7.4) containing 50% glycerol, and 0.02% sodium azide.

## Storage

Store at -20 °C for one year.

## Recommended Dilutions

Western Blotting (WB): 1:1,000-1:5,000

Flow Cytometry (FCM): 1:2,000

Immunocytochemistry (IC): 1:100-1:1,000

---

### SUPPORT

SUPPORT@GENUINBIOTECH.COM  
TEL: +1-540-855-7041

### ORDERS

SALES@GENUINBIOTECH.COM  
FAX: +1-540-855-7041

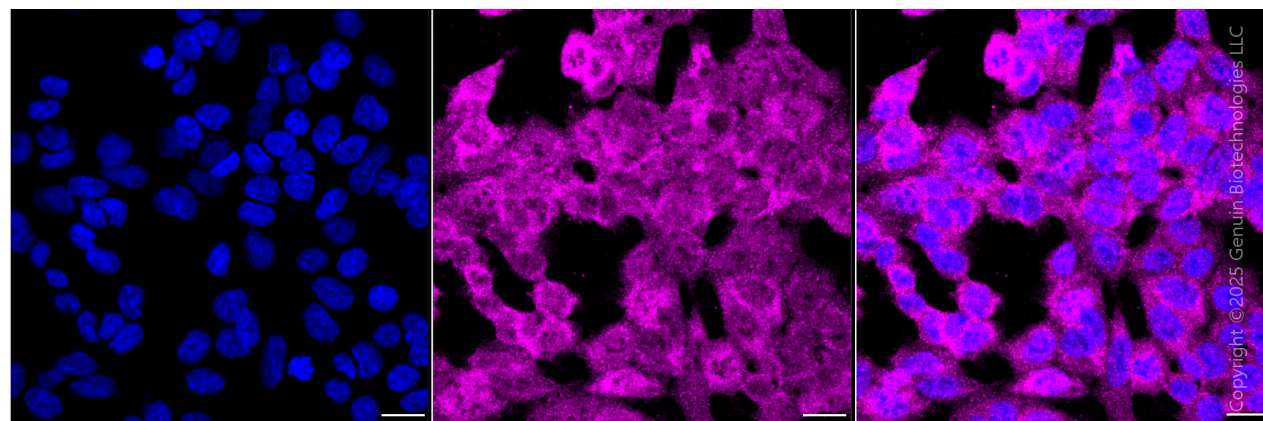
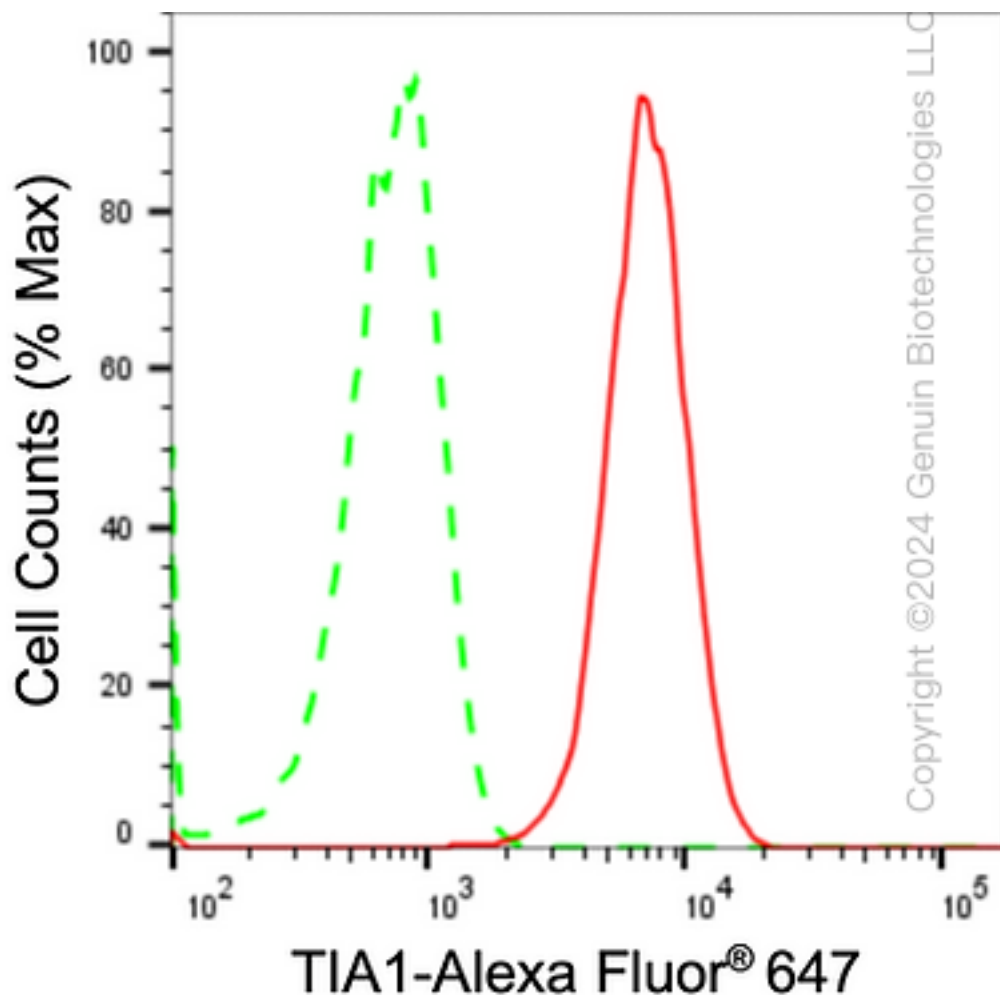
[WWW.GENUINBIOTECH.COM](http://WWW.GENUINBIOTECH.COM)

## KD-Validated Anti-TIA1 Recombinant Rabbit Monoclonal Antibody

PAGE 2

**Note:** This product is for research use only.

### Validation Data



#### SUPPORT

SUPPORT@GENUINBIOTECH.COM  
TEL: +1-540-855-7041

#### ORDERS

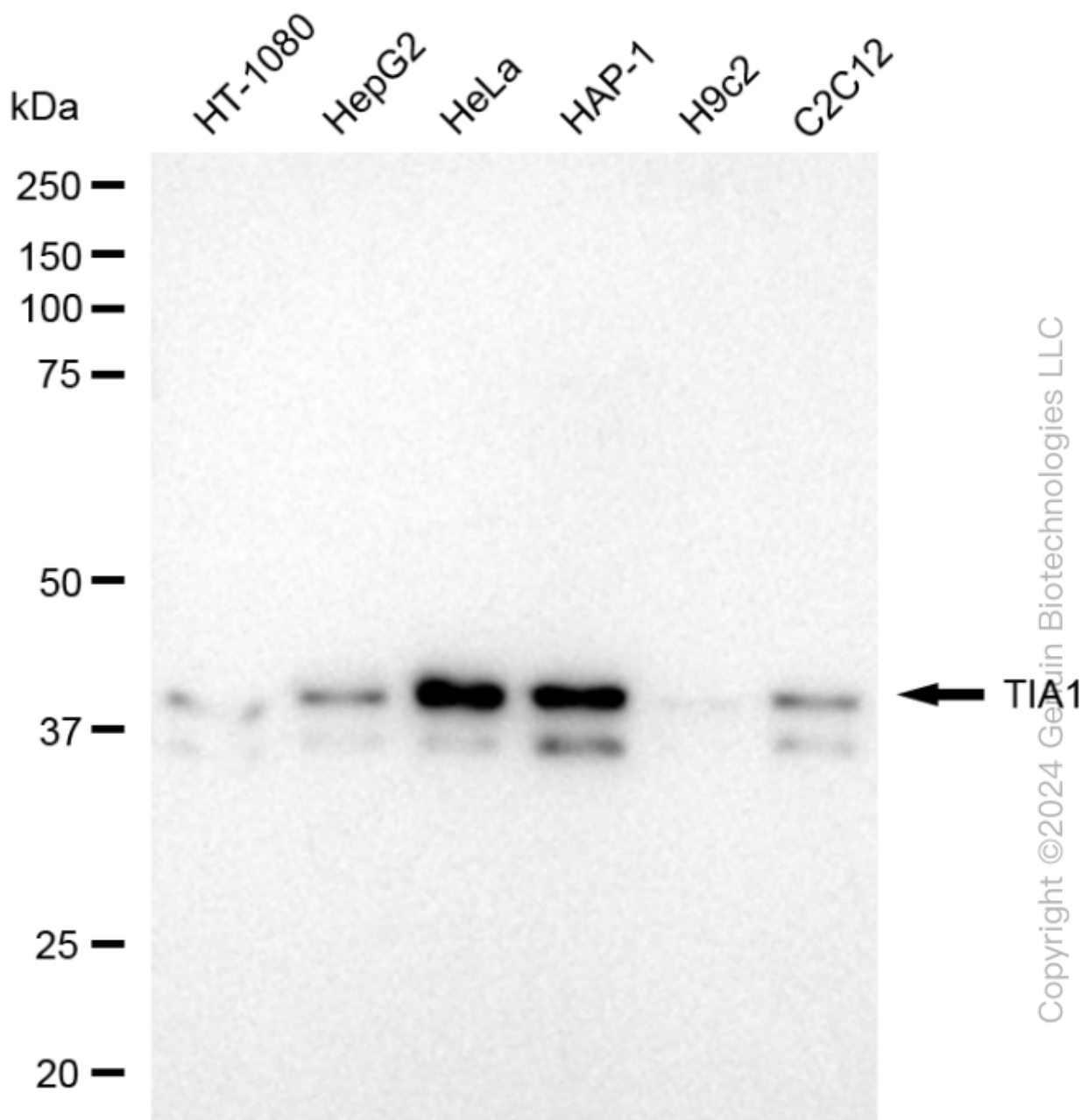
SALES@GENUINBIOTECH.COM  
FAX: +1-540-855-7041

[WWW.GENUINBIOTECH.COM](http://WWW.GENUINBIOTECH.COM)

## KD-Validated Anti-TIA1 Recombinant Rabbit Monoclonal Antibody

PAGE 3

Nuclei were stained blue with DAPI; TIA1 was stained magenta with Alexa Fluor® 647. Images were taken using Leica stellaris 5. Protein abundance based on laser Intensity and smart gain: Medium. Scale bar, 20 µm.



Western blotting analysis using anti-TIA1 antibody (Cat#62711). Total cell lysates (30 µg) from various cell lines were loaded and separated by SDS-PAGE. The blot was incubated with anti-TIA1 antibody (Cat#62711, 1:5,000) and HRP-conjugated goat anti-rabbit secondary antibody (Cat#201, 1:20,000) respectively. Image was developed using FeQ™ ECL Substrate Kit (Cat#226).

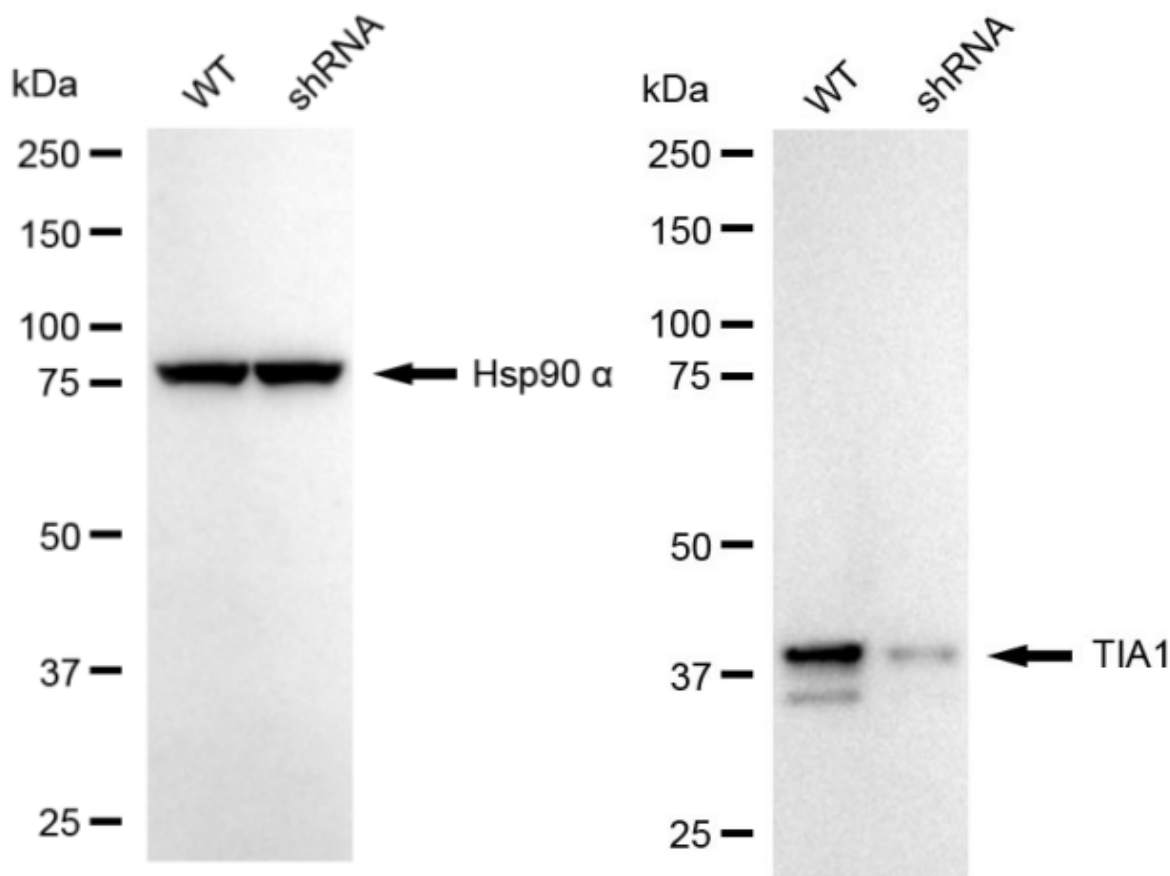
### SUPPORT

SUPPORT@GENUINBIOTECH.COM  
TEL: +1-540-855-7041

### ORDERS

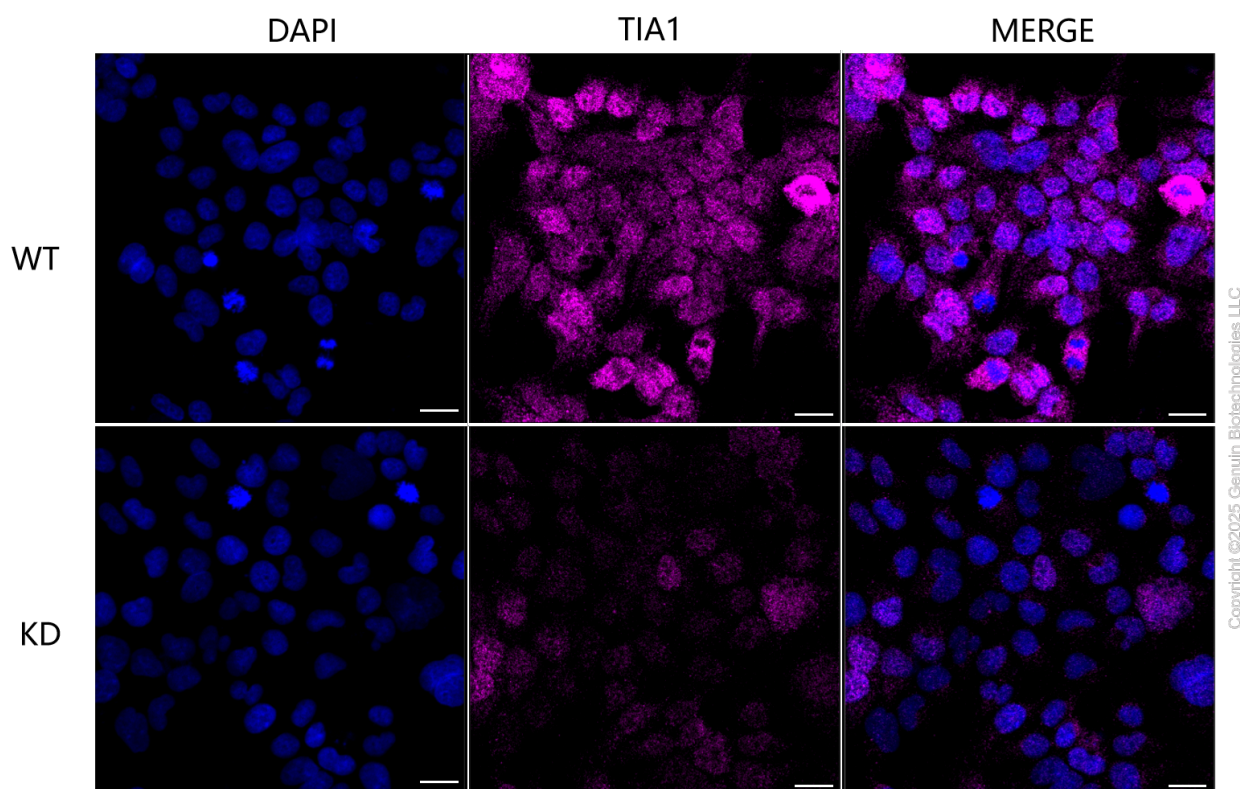
SALES@GENUINBIOTECH.COM  
FAX: +1-540-855-7041

WWW.GENUINBIOTECH.COM



copyright ©2024 Genuin Biotechnologies LLC

Western blotting analysis using anti-TIA1 antibody (Cat#62711). TIA1 expression in wild-type (WT) and TIA1 shRNA knockdown (KD) HeLa cells with 20 µg of total cell lysates. Hsp90 α serves as a loading control. The blot was incubated with anti-TIA1 antibody (Cat#62711, 1:5,000) and HRP-conjugated goat anti-rabbit secondary antibody (Cat#201, 1:20,000) respectively. Image was developed using NaQ™ ECL Substrate Kit (Cat#716).



Immunocytochemical staining of HeLa cells using anti-TIA1 antibody (Cat#62711, 1:1,000), Top panel: wild-type (WT); Bottom panel: TIA1 shRNA knockdown (KD). Nuclei were stained blue with DAPI; TIA1 was stained magenta with Alexa Fluor® 647. Scale bar, 20  $\mu$ m. Permeabilization: Triton.