

KD-Validated Anti-SMYD3 Recombinant Rabbit Monoclonal Antibody



Catalog #: 62714

Aliases

SMYD3; SET And MYND Domain Containing 3; ZNFN3A1; ZMYND1; KMT3E; Zinc Finger MYND Domain-Containing Protein 1; Histone-Lysine N-Methyltransferase SMYD3 ; SET And MYND Domain-Containing Protein 3; Zinc Finger, MYND Domain Containing 1; Zinc Finger Protein, Subfamily 3A (MYND Domain Containing), 1; EC 2.1.1.354; EC 2.1.1.43; BA74P14.1; EC 2.1.1

Background

Gene Name: SMYD3

NCBI Gene Entry: [64754](#)

UniProt Entry: [Q9H7B4](#)

Application Information

Molecular Weight: Predicted, 49 kDa, observed, 42 kDa

Clonality: Rabbit monoclonal antibody

Clone ID: 24GB2260

Species Reactivity: Human, mouse, rat

Applications Tested: Western blotting (WB), flow cytometry (FCM), immunocytochemistry (IC)

Immunogen

A synthesized peptide derived from human SMYD3

Isotype

Rabbit IgG

Storage Buffer

Supplied in PBS (pH 7.4) containing 50% glycerol, and 0.02% sodium azide.

Storage

Store at -20 °C for one year.

Recommended Dilutions

Western Blotting (WB): 1:1,000-1:5,000

Flow Cytometry (FCM): 1:2,000

Immunocytochemistry (IC): 1:100-1:1,000

SUPPORT

SUPPORT@GENUINBIOTECH.COM
TEL: +1-540-855-7041

ORDERS

SALES@GENUINBIOTECH.COM
FAX: +1-540-855-7041

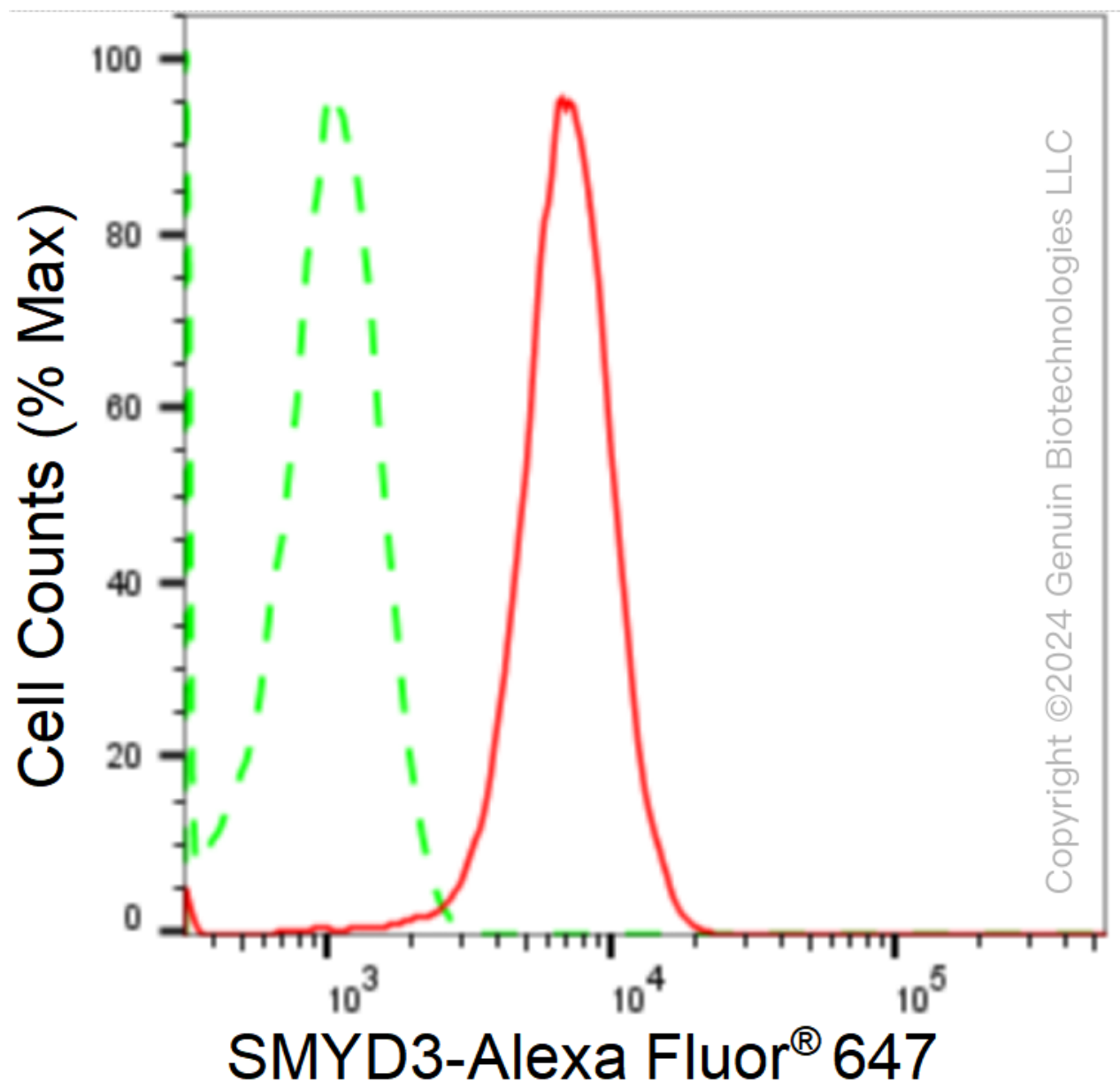
WWW.GENUINBIOTECH.COM

KD-Validated Anti-SMYD3 Recombinant Rabbit Monoclonal Antibody

PAGE 2

Note: This product is for research use only.

Validation Data



Flow cytometric analysis of SMYD3 expression in HepG2 cells using anti-SMYD3 antibody (Cat#62714, 1:2,000). Green, isotype control; red, SMYD3.

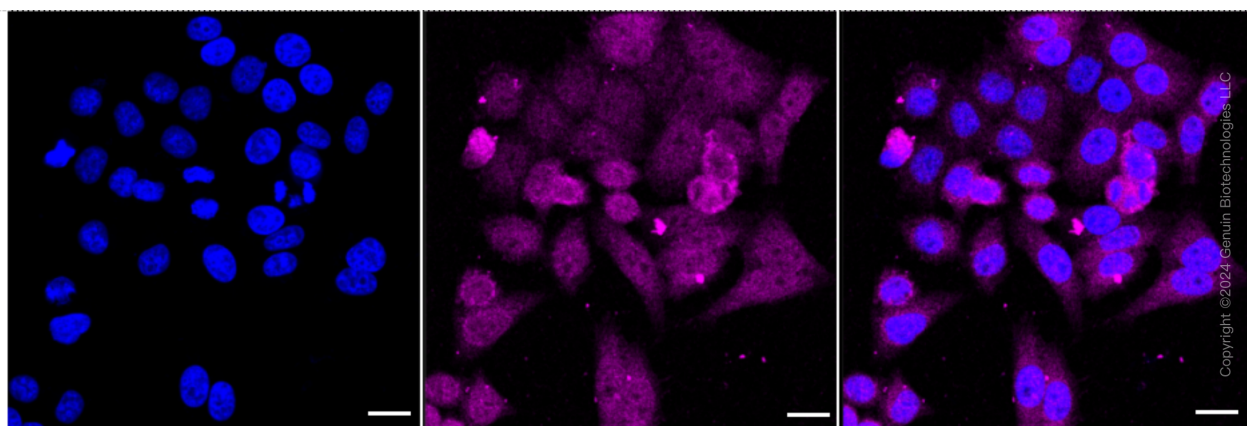
SUPPORT

SUPPORT@GENUINBIOTECH.COM
TEL: +1-540-855-7041

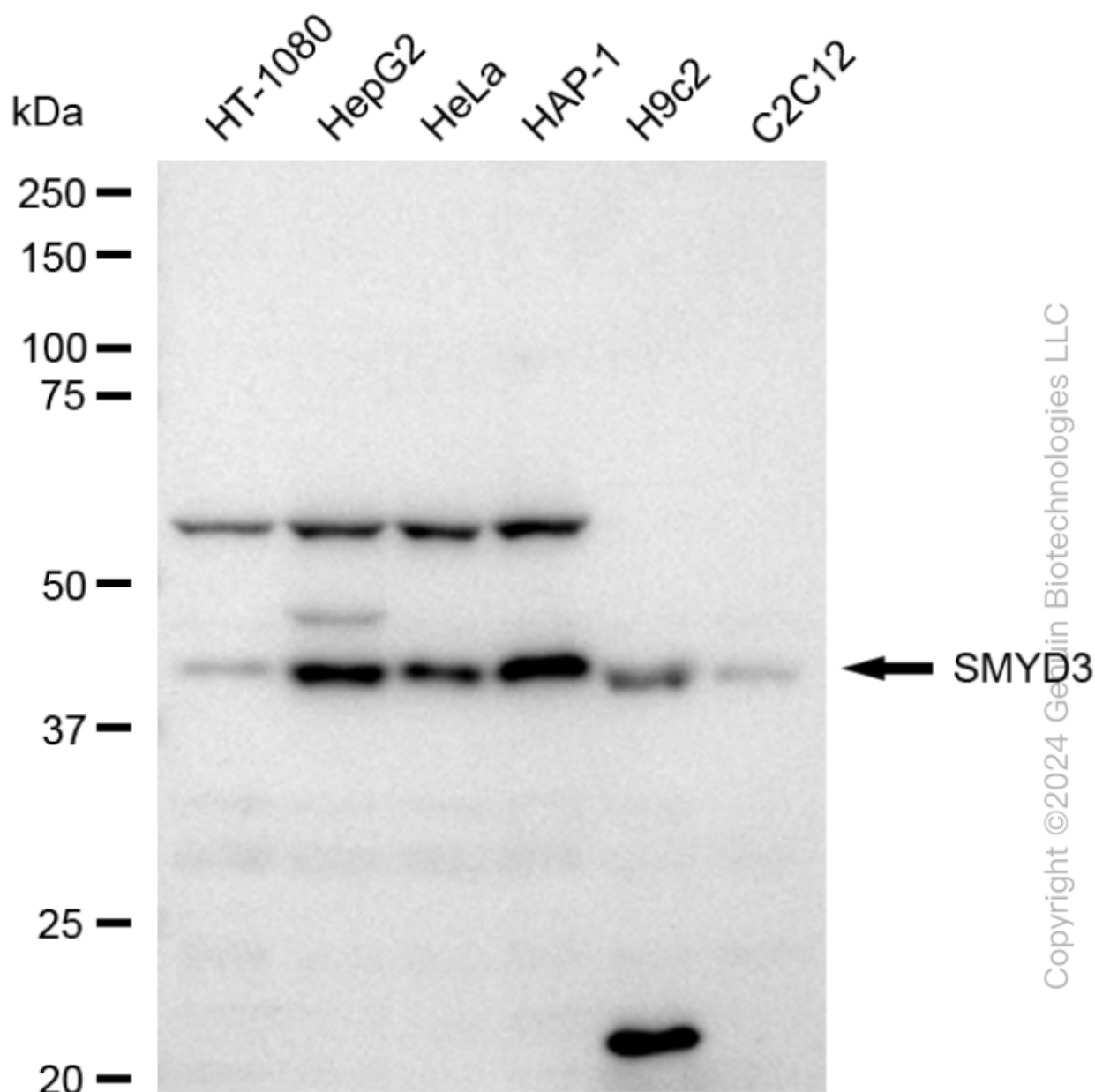
ORDERS

SALES@GENUINBIOTECH.COM
FAX: +1-540-855-7041

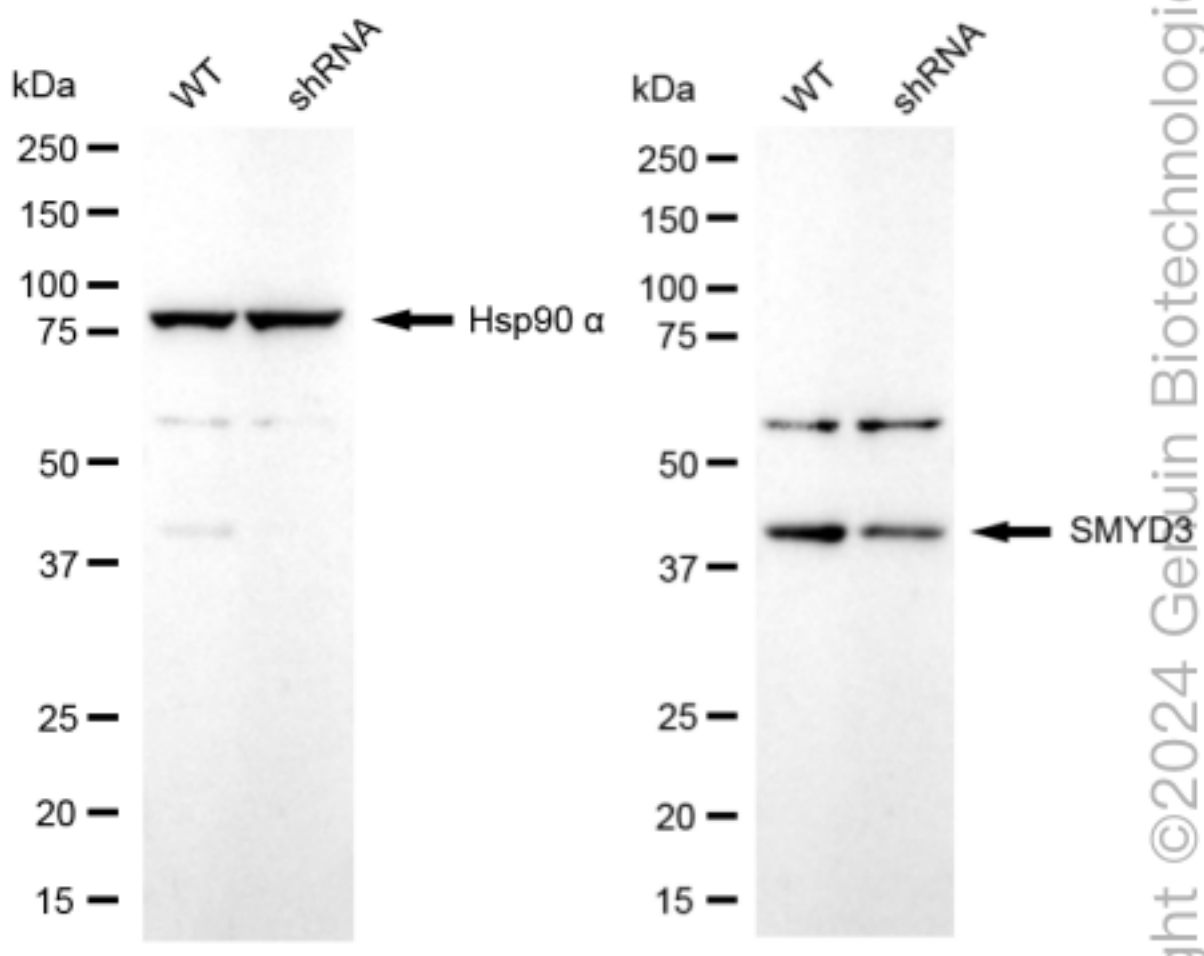
WWW.GENUINBIOTECH.COM



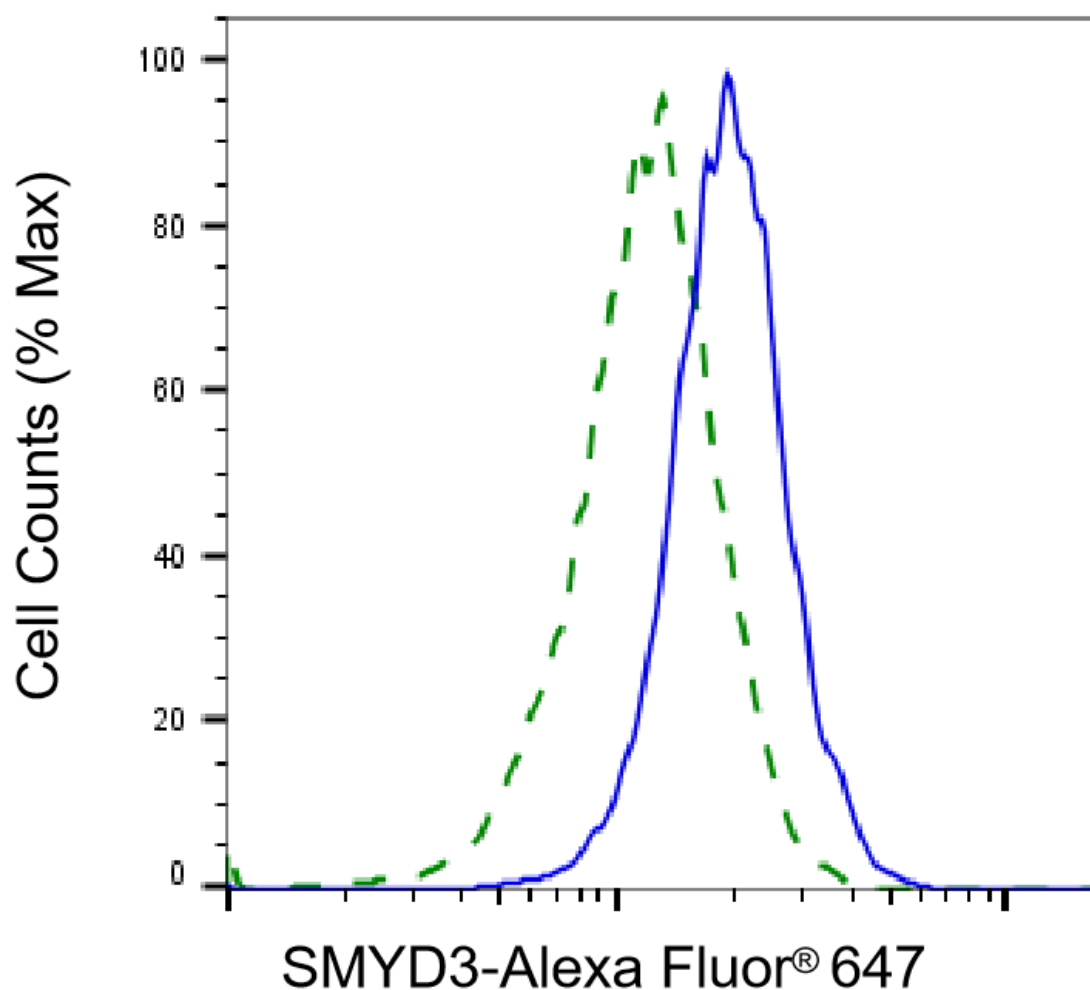
Immunocytochemical staining of HepG2 cells with anti-SMYD3 antibody (Cat#62714, 1:1,000). Nuclei were stained blue with DAPI; SMYD3 was stained magenta with Alexa Fluor® 647. Images were taken using Leica stellaris 5. Protein abundance based on laser Intensity and smart gain: Medium. Scale bar: 20 μ m.



Western blotting analysis using anti-SMYD3 antibody (Cat#62714). Total cell lysates (30 μ g) from various cell lines were loaded and separated by SDS-PAGE. The blot was incubated with anti-SMYD3 antibody (Cat#62714, 1:5,000) and HRP-conjugated goat anti-rabbit secondary antibody (Cat#201, 1:20,000) respectively. Image was developed using FeQ™ ECL Substrate Kit (Cat#226).



Western blotting analysis using anti-SMYD3 antibody (Cat#62714). SMYD3 expression in wild type (WT) and SMYD3 shRNA knockdown (KD) HeLa cells with 20 µg of total cell lysates. Hsp90 α serves as a loading control. The blot was incubated with anti-SMYD3 antibody (Cat#62714, 1:5,000) and HRP-conjugated goat anti-rabbit secondary antibody (Cat#201, 1:20,000) respectively. Image was developed using NaQ™ ECL Substrate Kit (Cat#716).



Copyright ©2025 Genuin Biotechnologies LLC

Validation of SMYD3 knockdown using flow cytometry. Wild-type(WT, Blue) and knockdown(KD, Green) HeLa cells were stained with anti-SMYD3 antibody (Cat#62714, 1:2,000) and analyzed using BD flow cytometer.