

# KD-Validated Anti-Versican Recombinant Rabbit Monoclonal Antibody



**Catalog #: 62725**

## Aliases

VCAN; Versican; PG-M; CSPG2; Chondroitin Sulfate Proteoglycan Core Protein; Chondroitin Sulfate Proteoglycan 2; Glial Hyaluronate-Binding Protein; Large Fibroblast Proteoglycan; Versican Proteoglycan; Versican Core Protein; GHAP; ERVR; WGN1; WGN

## Background

Gene Name: VCAN

NCBI Gene Entry: [1462](#)

UniProt Entry: [P13611](#)

## Application Information

Molecular Weight: Predicted, 373 kDa, observed, 373 kDa

Clonality: Rabbit monoclonal antibody

Clone ID: 24GB2380

Species Reactivity: Human, mouse, rat

Applications Tested: Western blotting (WB), flow cytometry (FCM), immunocytochemistry (IC)

## Immunogen

A synthesized peptide derived from human Versican

## Isotype

Rabbit IgG

## Storage Buffer

Supplied in PBS (pH 7.4) containing 50% glycerol, and 0.02% sodium azide.

## Storage

Store at -20 °C for one year.

## Recommended Dilutions

Western Blotting (WB): 1:1,000-1:5,000

Flow Cytometry (FCM): 1:2,000

Immunocytochemistry (IC): 1:100-1:1,000

**Note:** This product is for research use only.

---

### SUPPORT

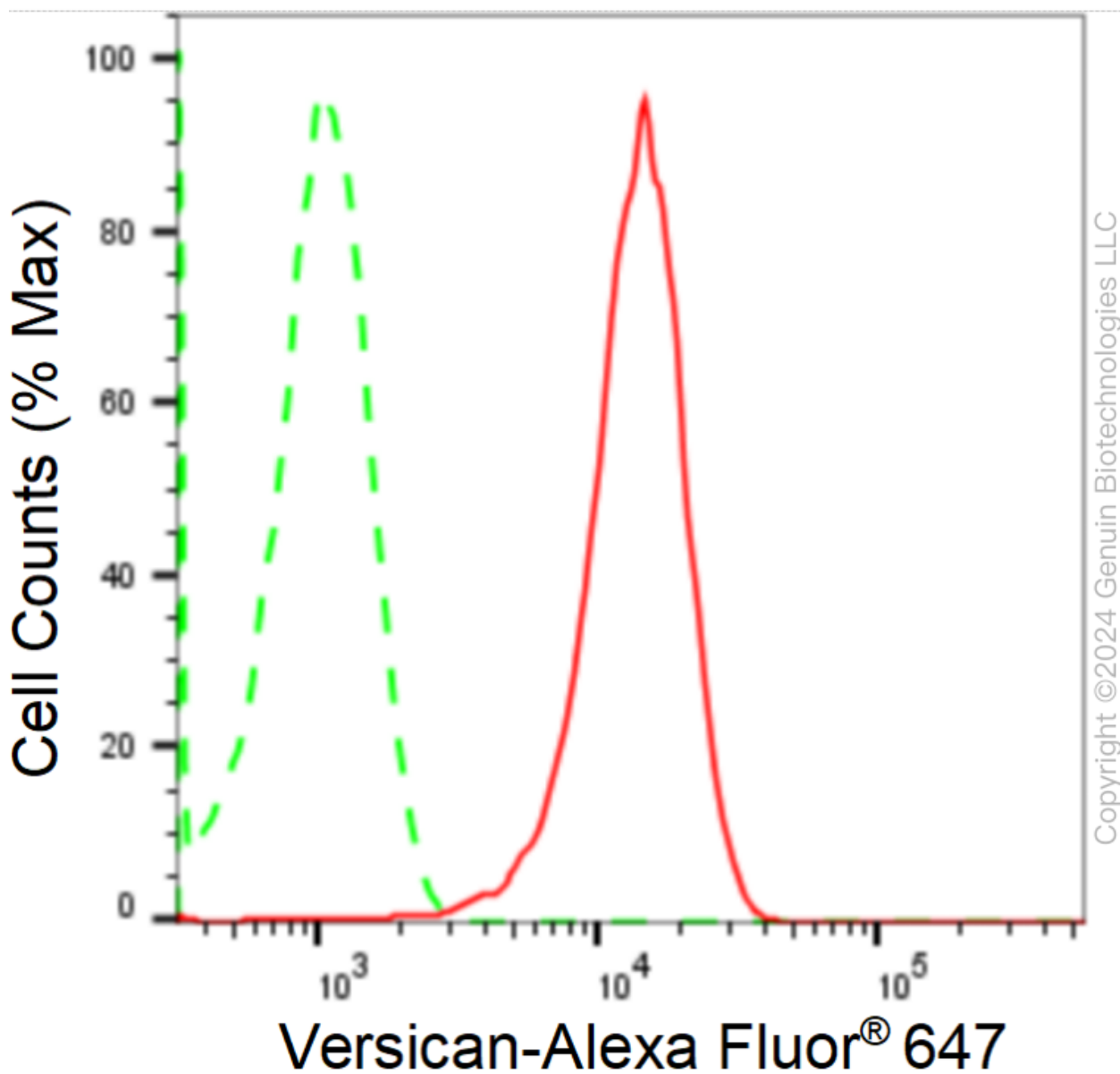
SUPPORT@GENUINBIOTECH.COM  
TEL: +1-540-855-7041

### ORDERS

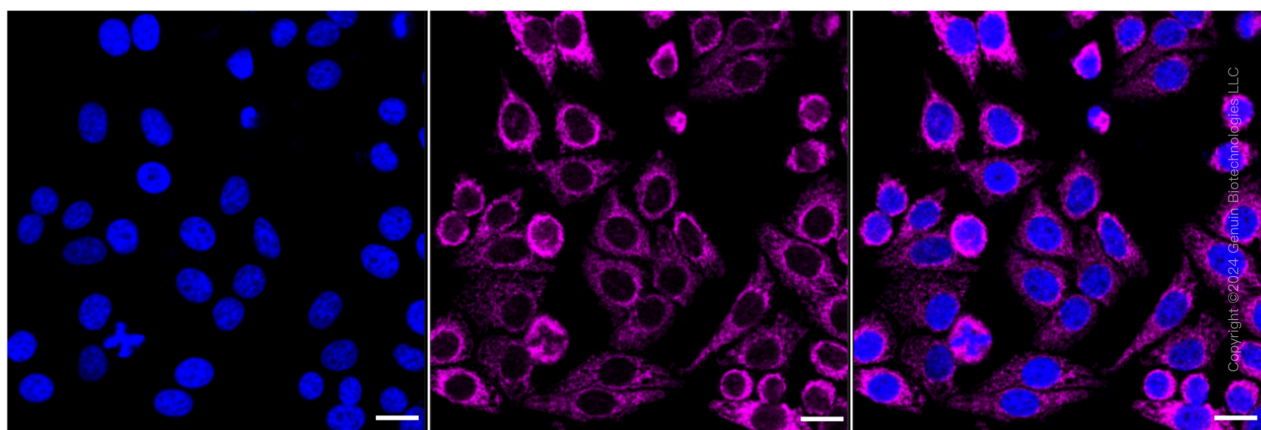
SALES@GENUINBIOTECH.COM  
FAX: +1-540-855-7041

[WWW.GENUINBIOTECH.COM](http://WWW.GENUINBIOTECH.COM)

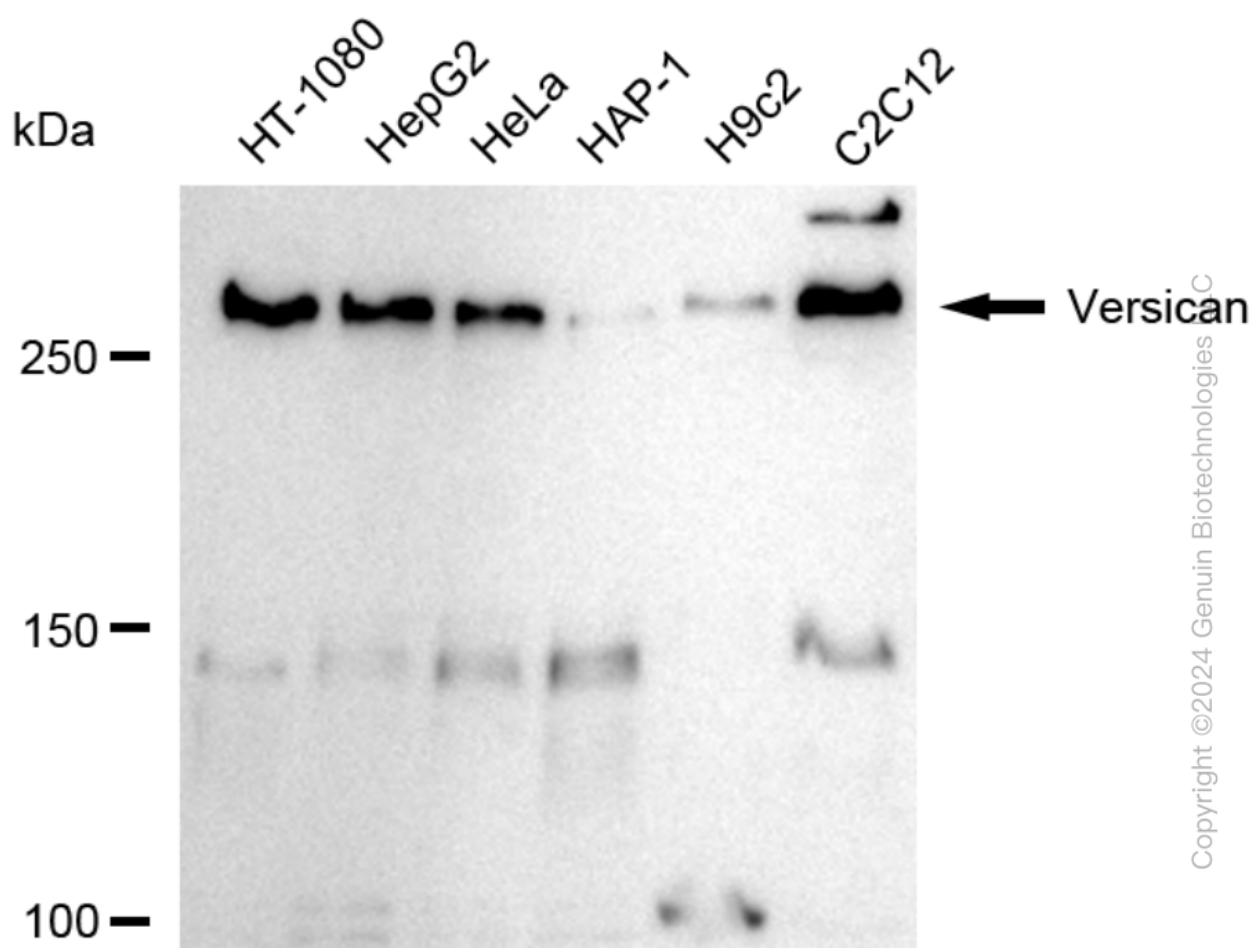
**Validation Data**



Flow cytometric analysis of Versican expression in HepG2 cells using anti-Versican antibody (Cat#62725, 1:2,000). Green, isotype control; red, Versican.



Immunocytochemical staining of HepG2 cells with anti-Versican antibody (Cat#62725, 1:1,000). Nuclei were stained blue with DAPI; Versican was stained magenta with Alexa Fluor® 647. Images were taken using Leica stellaris 5. Protein abundance based on laser Intensity and smart gain: Medium. Scale bar: 20  $\mu$ m.

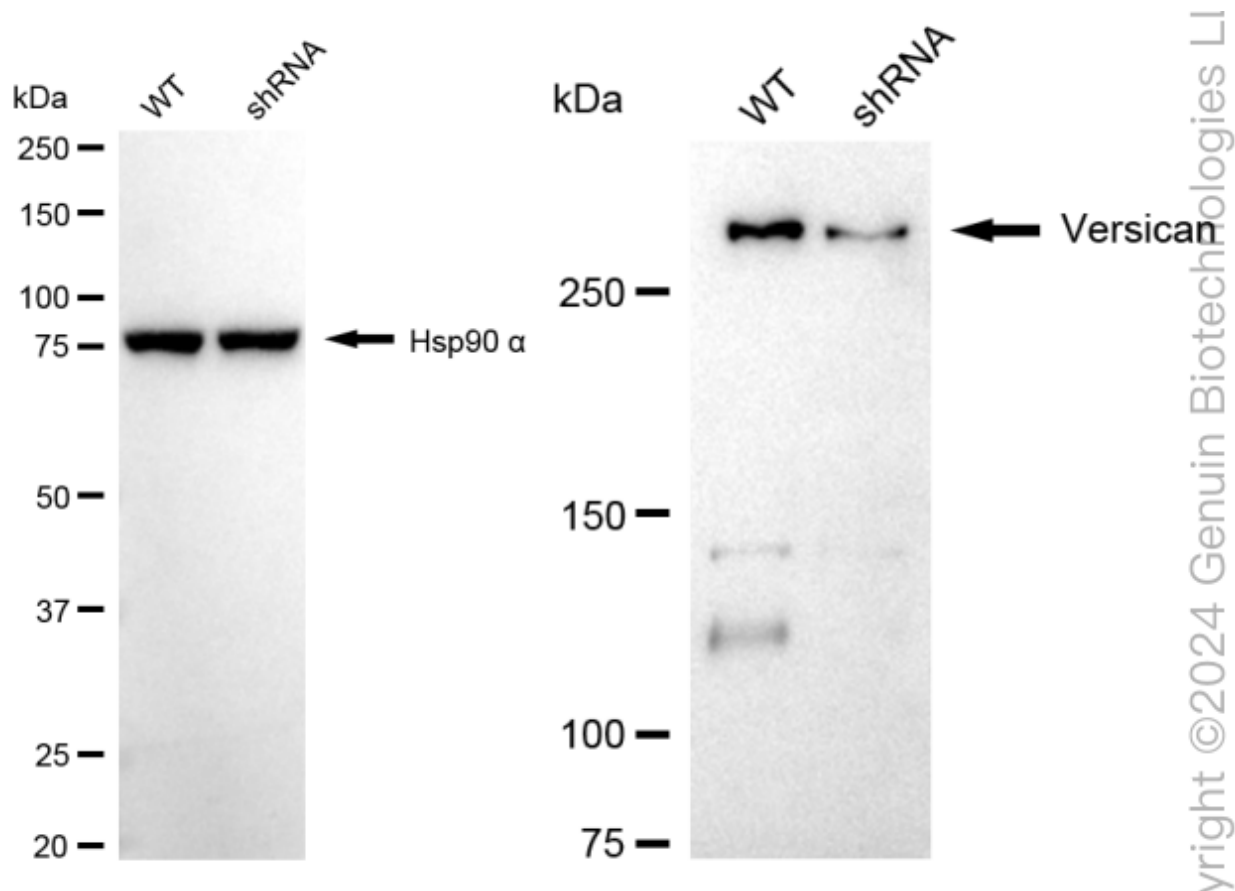


Western blotting analysis using anti-Versican antibody (Cat#62725). Total cell lysates (30  $\mu$ g) from various cell lines were loaded and separated by SDS-PAGE. The blot was incubated with anti-Versican antibody (Cat#62725, 1:5,000) and HRP-conjugated goat anti-rabbit secondary

## KD-Validated Anti-Versican Recombinant Rabbit Monoclonal Antibody

PAGE 4

antibody (Cat#201, 1:20,000) respectively. Image was developed using FeQ™ ECL Substrate Kit (Cat#226).



Western blotting analysis using anti-versican antibody (Cat#62725). Versican expression in wild-type (WT) and versican (VCAN) shRNA knockdown (KD) HT-1080 cells with 20 µg of total cell lysates. Hsp90 α serves as a loading control. The blot was incubated with anti-versican antibody (Cat#62725, 1:5,000) and HRP-conjugated goat anti-rabbit secondary antibody (Cat#201, 1:20,000) respectively. Image was developed using NaQ™ ECL Substrate Kit (Cat#716).

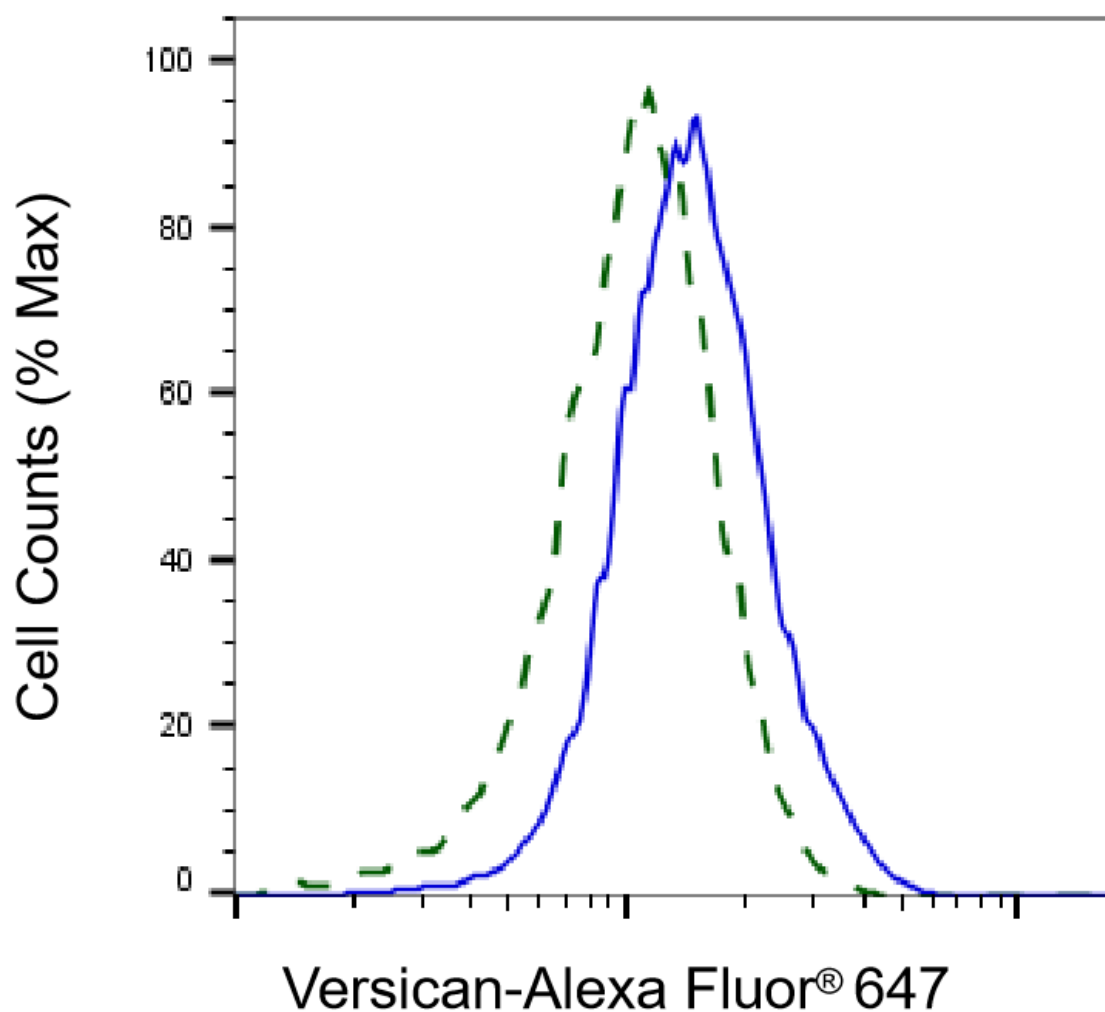
### SUPPORT

SUPPORT@GENUINBIOTECH.COM  
TEL: +1-540-855-7041

### ORDERS

SALES@GENUINBIOTECH.COM  
FAX: +1-540-855-7041

[WWW.GENUINBIOTECH.COM](http://WWW.GENUINBIOTECH.COM)



Copyright ©2025 Genuin Biotechnologies LLC

Validation of Versican knockdown using flow cytometry. Wild-type(WT, Blue) and knockdown(KD, Green) HT-1080 cells were stained with anti-Versican antibody (Cat#62725, 1:2,000) and analyzed using BD flow cytometer.