

KD-Validated Anti-SMC4 Recombinant Rabbit Monoclonal Antibody



Catalog #: 62727

Aliases

SMC4; Structural Maintenance Of Chromosomes 4; HCAP-C; SMC4L1; CAP-C; Structural Maintenance Of Chromosomes Protein 4; Chromosome-Associated Polypeptide C; SMC Protein 4; SMC-4; CAPC; SMC4 (Structural Maintenance Of Chromosomes 4, Yeast)-Like 1; SMC4 Structural Maintenance Of Chromosomes 4-Like 1 (Yeast); SMC4 Structural Maintenance Of Chromosomes 4-Like 1; XCAP-C Homolog

Background

Gene Name: SMC4

NCBI Gene Entry: [10051](#)

UniProt Entry: [Q9NTJ3](#)

Application Information

Molecular Weight: Predicted, 147 kDa, observed, 180 kDa

Clonality: Rabbit monoclonal antibody

Clone ID: 24GB2400

Species Reactivity: Human, mouse, rat

Applications Tested: Western blotting (WB), flow cytometry (FCM), immunocytochemistry (IC)

Immunogen

A synthesized peptide derived from human SMC4

Isotype

Rabbit IgG

Storage Buffer

Supplied in PBS (pH 7.4) containing 50% glycerol, and 0.02% sodium azide.

Storage

Store at -20 °C for one year.

Recommended Dilutions

Western Blotting (WB): 1:1,000-1:5,000

Flow Cytometry (FCM): 1:2,000

Immunocytochemistry (IC): 1:100-1:1,000

SUPPORT

SUPPORT@GENUINBIOTECH.COM
TEL: +1-540-855-7041

ORDERS

SALES@GENUINBIOTECH.COM
FAX: +1-540-855-7041

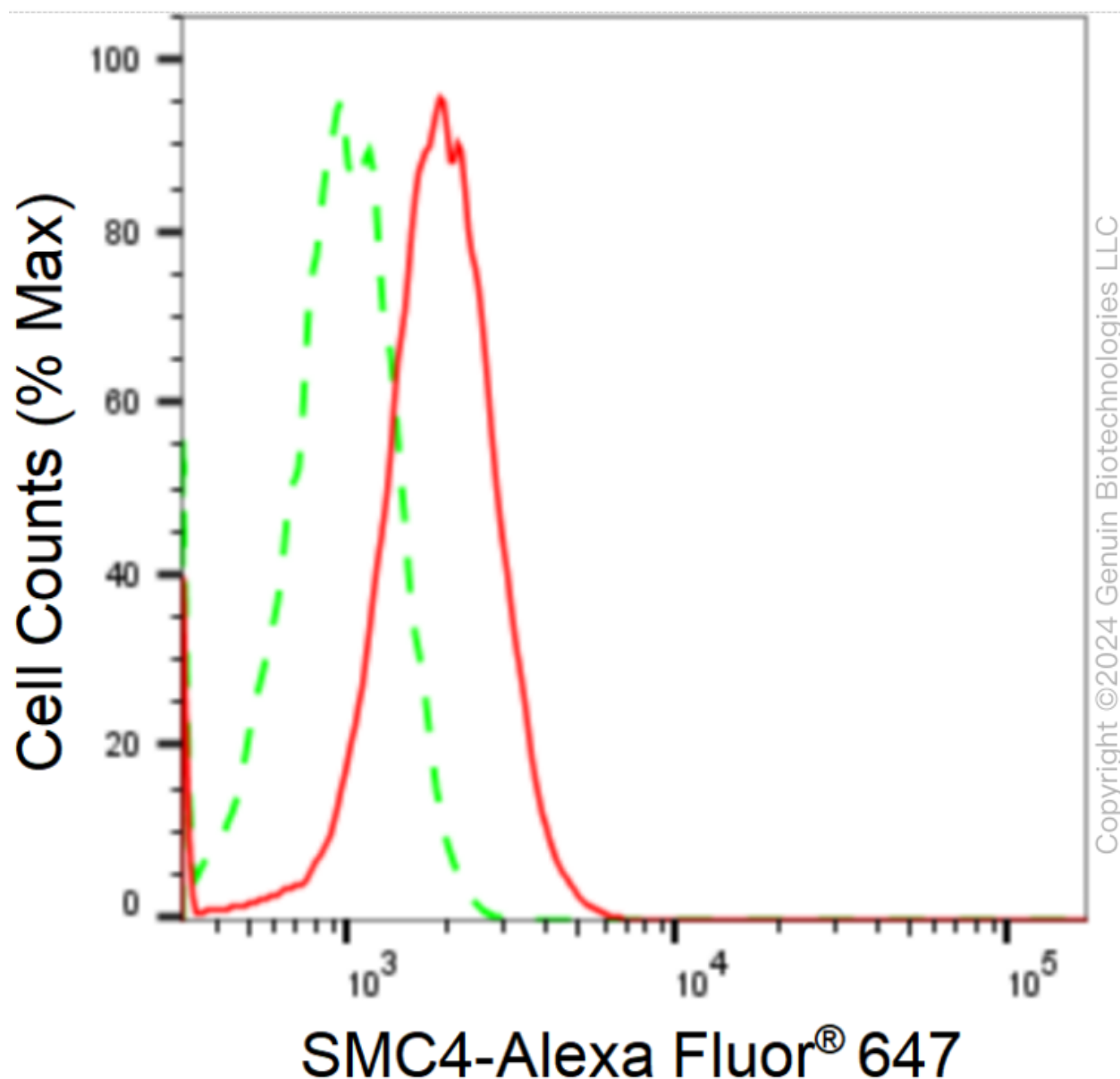
WWW.GENUINBIOTECH.COM

KD-Validated Anti-SMC4 Recombinant Rabbit Monoclonal Antibody

PAGE 2

Note: This product is for research use only.

Validation Data



Flow cytometric analysis of SMC4 expression in HT-1080 cells using anti-SMC4 antibody (Cat#62727, 1:2,000). Green, isotype control; red, SMC4.

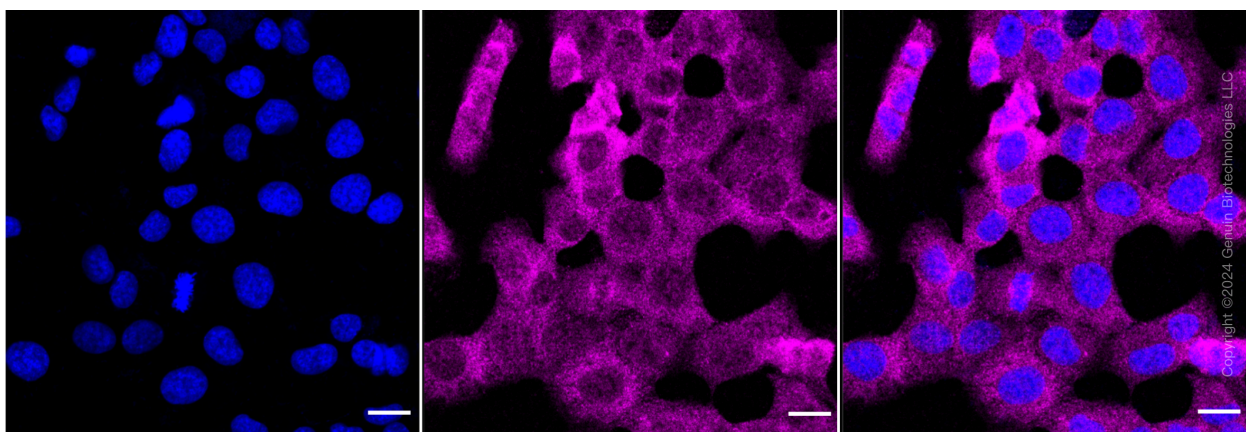
SUPPORT

SUPPORT@GENUINBIOTECH.COM
TEL: +1-540-855-7041

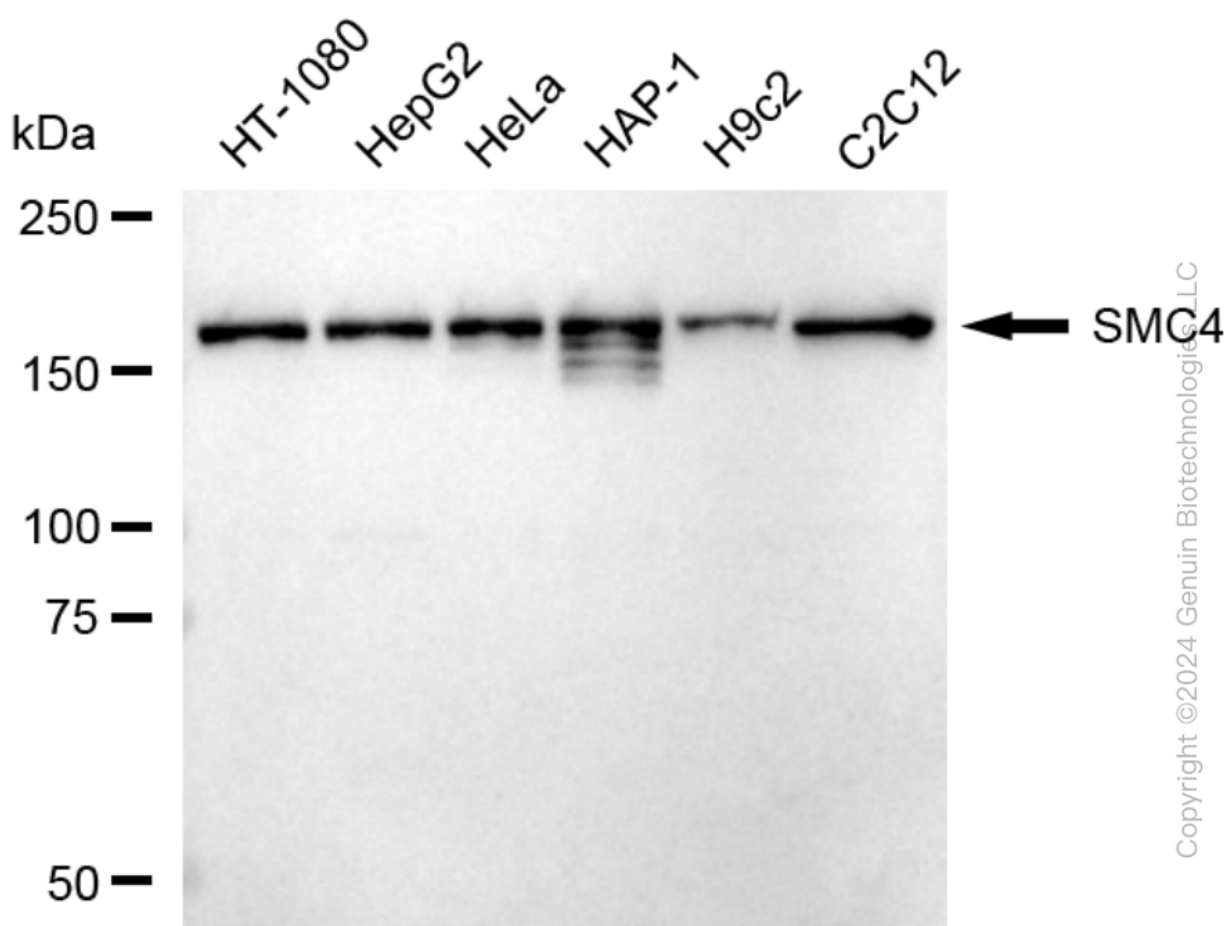
ORDERS

SALES@GENUINBIOTECH.COM
FAX: +1-540-855-7041

WWW.GENUINBIOTECH.COM



Immunocytochemical staining of HT-1080 cells with anti-SMC4 antibody (Cat#62727, 1:1,000). Nuclei were stained blue with DAPI; SMC4 was stained magenta with Alexa Fluor® 647. Images were taken using Leica stellaris 5. Protein abundance based on laser Intensity and smart gain: Medium. Scale bar: 20 μ m.



Western blotting analysis using anti-SMC4 antibody (Cat#62727). Total cell lysates (30 μ g) from various cell lines were loaded and separated by SDS-PAGE. The blot was incubated with anti-SMC4 antibody (Cat#62727, 1:5,000) and HRP-conjugated goat anti-rabbit secondary antibody

SUPPORT

SUPPORT@GENUINBIOTECH.COM
TEL: +1-540-855-7041

ORDERS

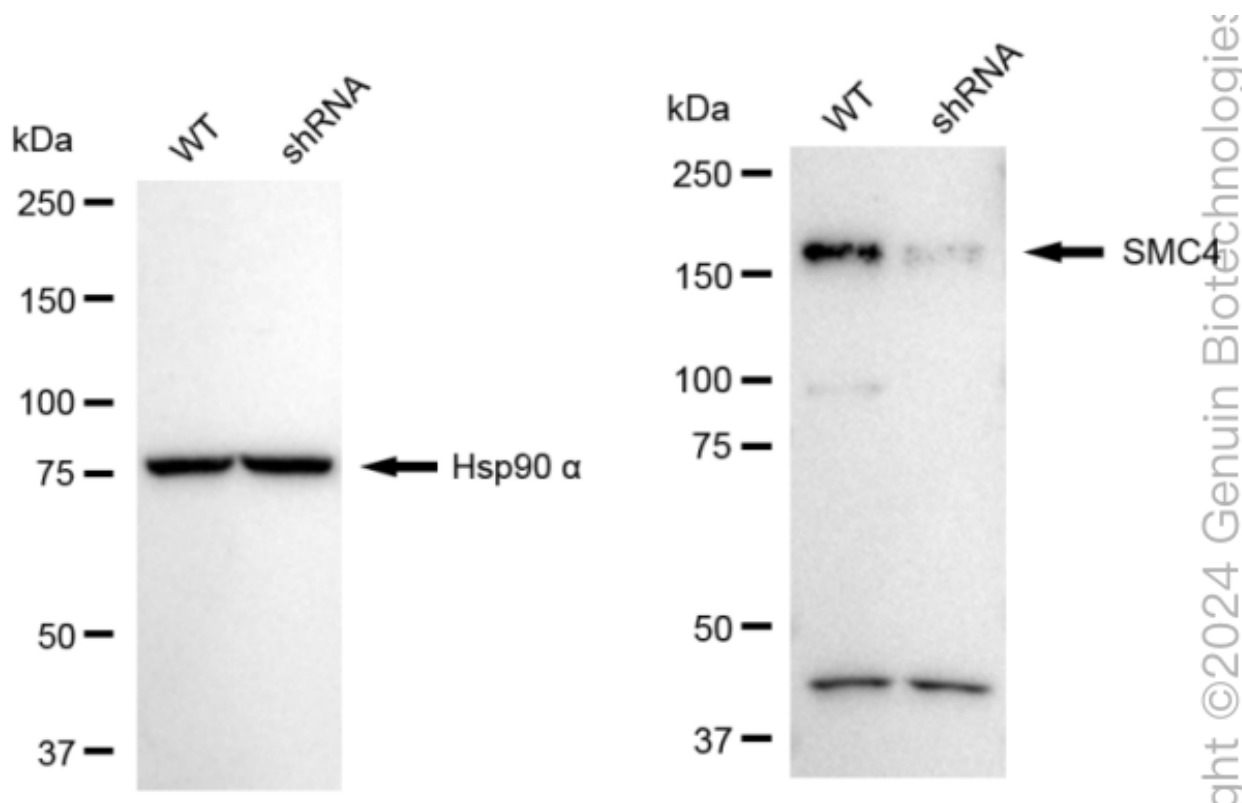
SALES@GENUINBIOTECH.COM
FAX: +1-540-855-7041

WWW.GENUINBIOTECH.COM

KD-Validated Anti-SMC4 Recombinant Rabbit Monoclonal Antibody

PAGE 4

(Cat#201, 1:20,000) respectively. Image was developed using FeQ™ ECL Substrate Kit (Cat#226).



Western blotting analysis using anti-SMC4 antibody (Cat#62727). SMC4 expression in wild type (WT) and SMC4 shRNA knockdown (KD) HeLa cells with 20 µg of total cell lysates. Hsp90 α serves as a loading control. The blot was incubated with anti-SMC4 antibody (Cat#62727, 1:5,000) and HRP-conjugated goat anti-rabbit secondary antibody (Cat#201, 1:20,000) respectively. Image was developed using NaQ™ ECL Substrate Kit (Cat#716).

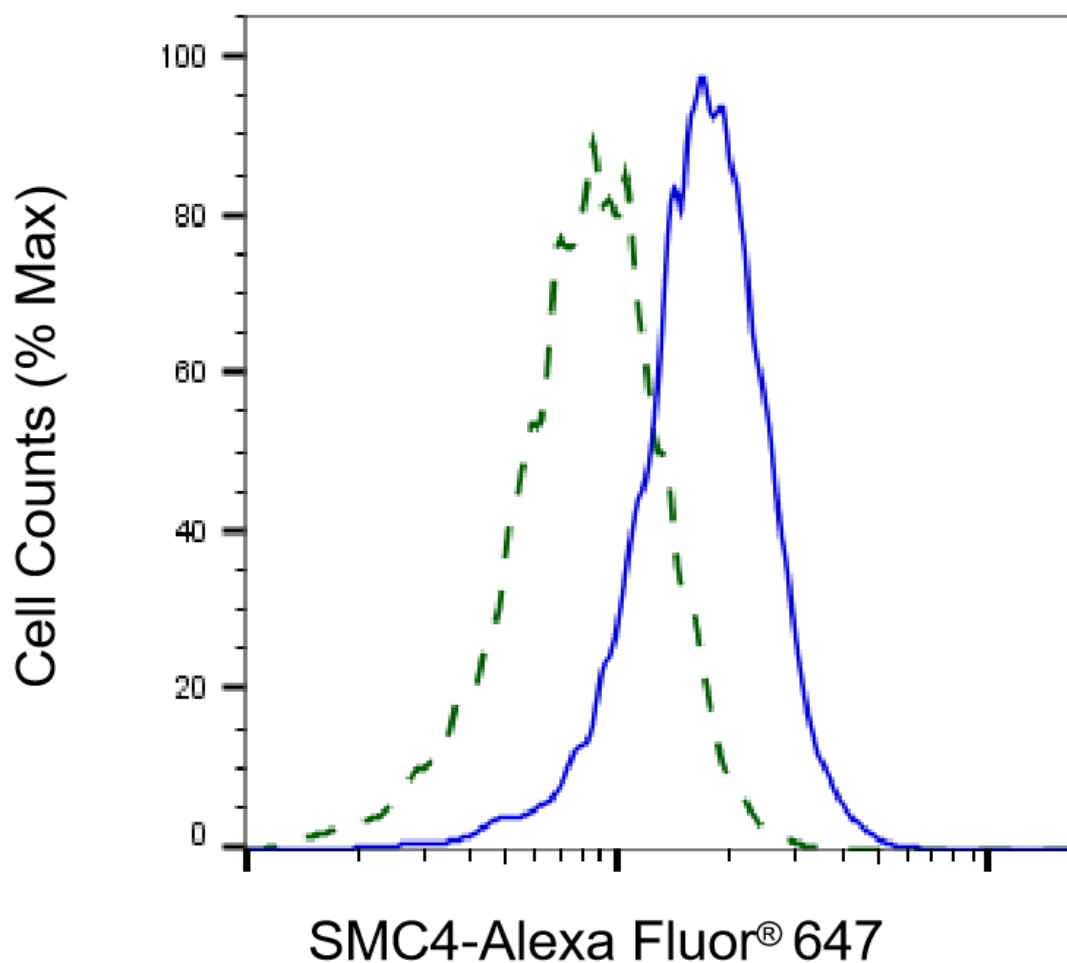
SUPPORT

SUPPORT@GENUINBIOTECH.COM
TEL: +1-540-855-7041

ORDERS

SALES@GENUINBIOTECH.COM
FAX: +1-540-855-7041

WWW.GENUINBIOTECH.COM



Copyright ©2025 Genuin Biotechnologies LLC

Validation of SMC4 knockdown using flow cytometry. Wild-type(WT, Blue) and knockdown(KD, Green) HeLa cells were stained with anti-SMC4 antibody (Cat#62727, 1:2,000) and analyzed using BD flow cytometer.