

KD-Validated Anti-Three Prime Repair Exonuclease 1 Recombinant Rabbit Monoclonal



Catalog #: 62730

Aliases

TREX1; Three Prime Repair Exonuclease 1; DRN3; Three-Prime Repair Exonuclease 1; 3'-5' Exonuclease TREX1; Deoxyribonuclease III; DNase III; AGS1; Aicardi-Goutieres Syndrome 1; 3' Repair Exonuclease 1; EC 3.1.11.2; HERNS; RVCLS; CRV

Background

Gene Name: TREX1

NCBI Gene Entry: [11277](#)

UniProt Entry: [Q9NSU2](#)

Application Information

Molecular Weight: Predicted, 33 kDa, observed, 33 kDa

Clonality: Rabbit monoclonal antibody

Clone ID: 24GB2440

Species Reactivity: Human

Applications Tested: Western blotting (WB), flow cytometry (FCM), immunocytochemistry (IC)

Immunogen

A synthesized peptide derived from human TREX1

Isotype

Rabbit IgG

Storage Buffer

Supplied in PBS (pH 7.4) containing 50% glycerol, and 0.02% sodium azide.

Storage

Store at -20 °C for one year.

Recommended Dilutions

Western Blotting (WB): 1:1,000-1:5,000

Flow Cytometry (FCM): 1:2,000

Immunocytochemistry (IC): 1:100-1:1,000

Note: This product is for research use only.

SUPPORT

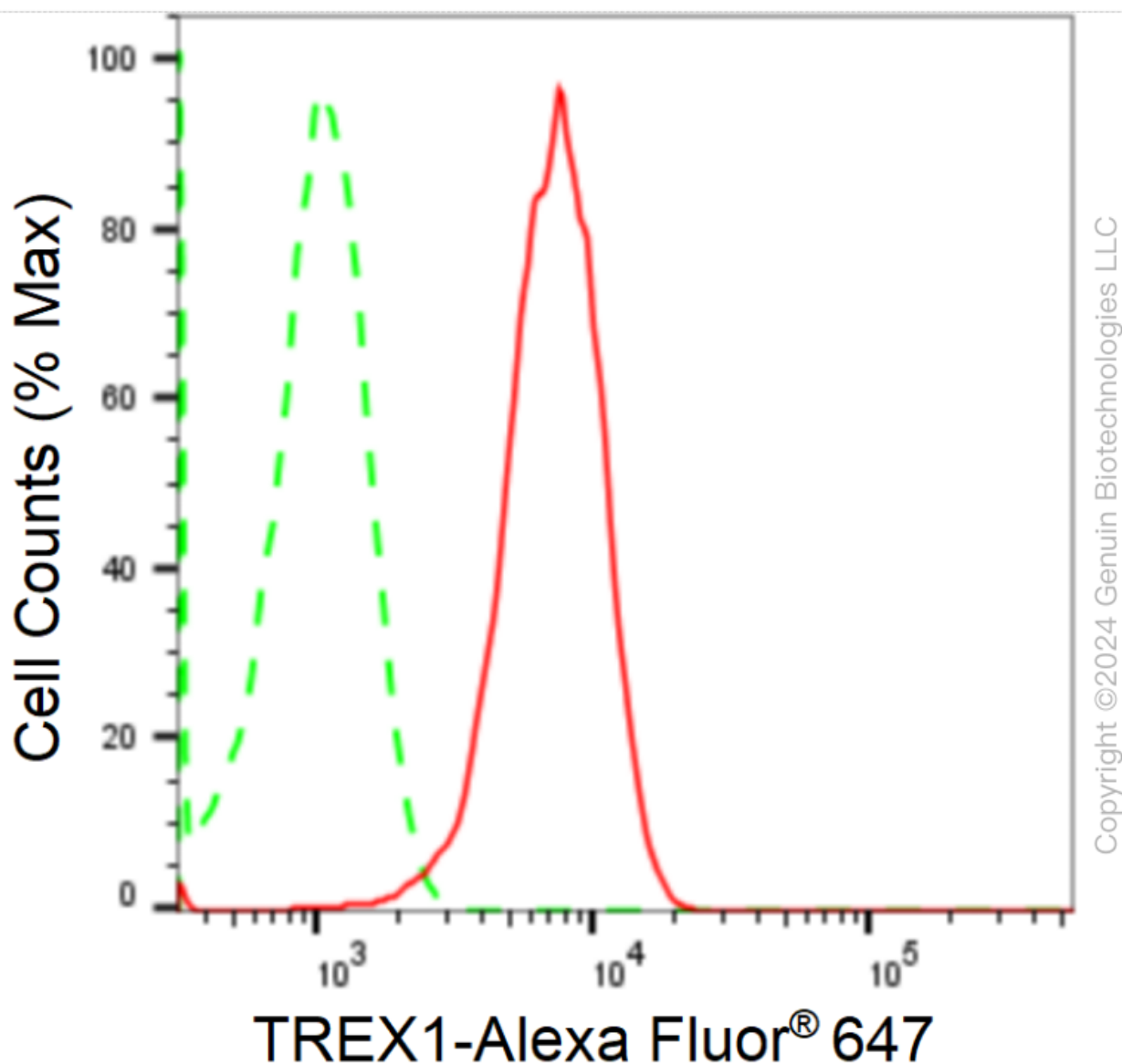
SUPPORT@GENUINBIOTECH.COM
TEL: +1-540-855-7041

ORDERS

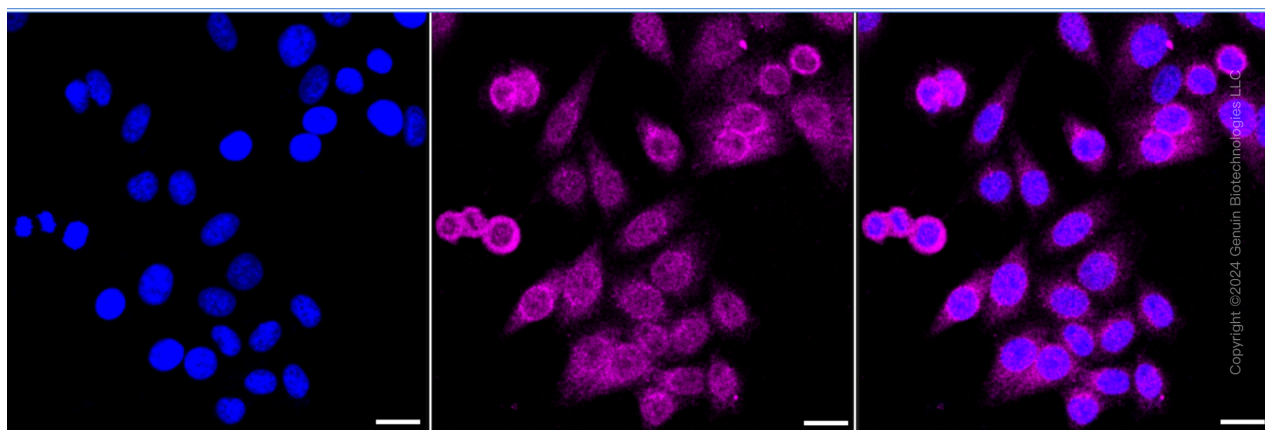
SALES@GENUINBIOTECH.COM
FAX: +1-540-855-7041

WWW.GENUINBIOTECH.COM

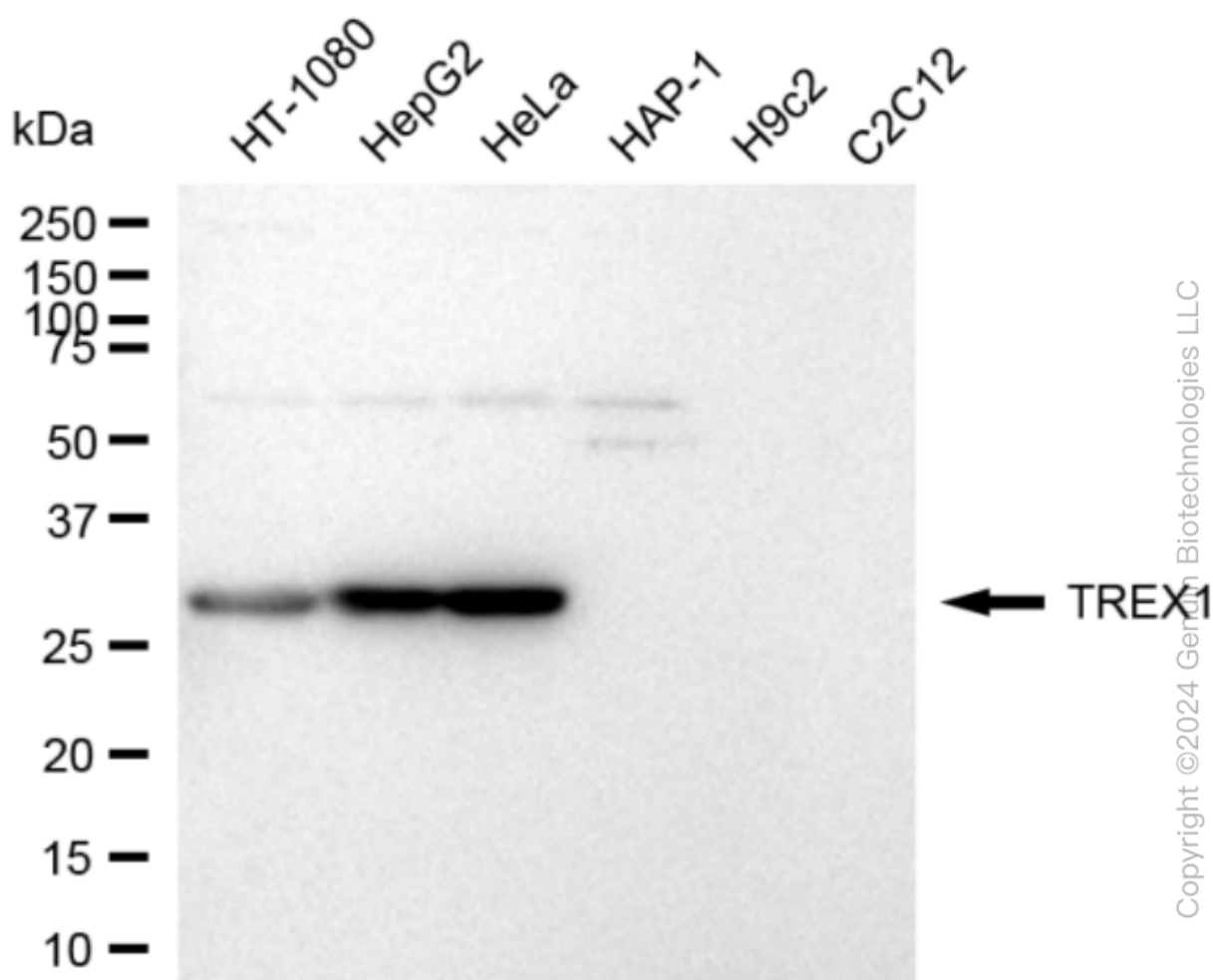
Validation Data



Flow cytometric analysis of TREX1 expression in HepG2 cells using anti-TREX1 antibody (Cat#62730, 1:2,000). Green, isotype control; red, TREX1.



Immunocytochemical staining of HepG2 cells with anti-TREX1 antibody (Cat#62730, 1:1,000). Nuclei were stained blue with DAPI; TREX1 was stained magenta with Alexa Fluor® 647. Images were taken using Leica stellaris 5. Protein abundance based on laser Intensity and smart gain: Medium. Scale bar: 20 μ m.

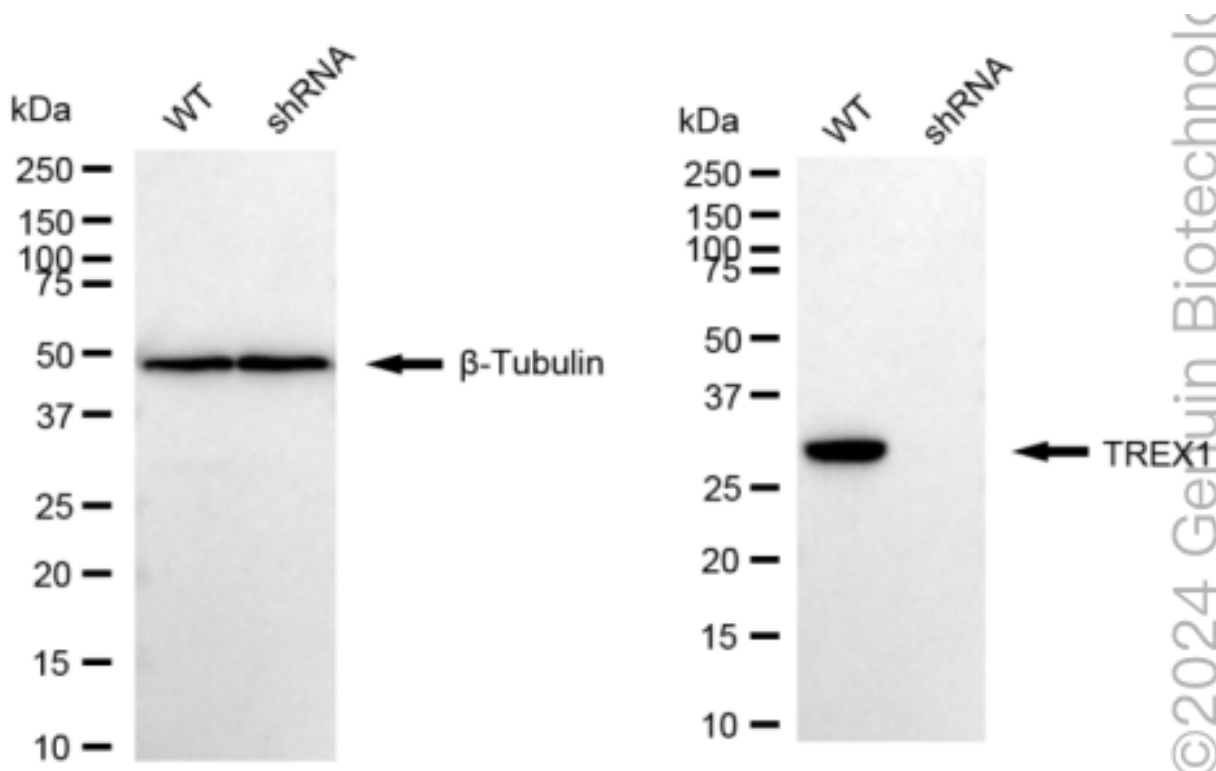


Western blotting analysis using anti-TREX1 antibody (Cat#62730). Total cell lysates (30 μ g) from

KD-Validated Anti-Three Prime Repair Exonuclease 1 Recombinant Rabbit Monoclonal

PAGE 4

various cell lines were loaded and separated by SDS-PAGE. The blot was incubated with anti-TREX1 antibody (Cat#62730, 1:5,000) and HRP-conjugated goat anti-rabbit secondary antibody (Cat#201, 1:20,000) respectively. Image was developed using FeQ™ ECL Substrate Kit (Cat#226).



Western blotting analysis using anti-TREX1 antibody (Cat#62730). TREX1 expression in wild type (WT) and TREX1 shRNA knockdown (KD) HeLa cells with 20 µg of total cell lysates. β-Tubulin serves as a loading control. The blot was incubated with anti-TREX1 antibody (Cat#62730, 1:5,000) and HRP-conjugated goat anti-rabbit secondary antibody (Cat#201, 1:20,000) respectively. Image was developed using NaQ™ ECL Substrate Kit (Cat#716).

SUPPORT

SUPPORT@GENUINBIOTECH.COM
TEL: +1-540-855-7041

ORDERS

SALES@GENUINBIOTECH.COM
FAX: +1-540-855-7041

WWW.GENUINBIOTECH.COM