

KD-Validated Anti-Ubiquitin Specific Peptidase 5 Recombinant Rabbit Monoclonal Antibody



Catalog #: 62732

Aliases

USP5; Ubiquitin Specific Peptidase 5; Isopeptidase T; IsoT; Ubiquitin-Specific-Processing Protease 5; Ubiquitin Carboxyl-Terminal Hydrolase 5; Deubiquitinating Enzyme 5; Ubiquitin Thioesterase 5; Ubiquitin-Specific Protease-5 (Ubiquitin Isopeptidase T); Ubiquitin Specific Peptidase 5 (Isopeptidase T); Ubiquitin Specific Protease 5 (Isopeptidase T); Testicular Tissue Protein Li 218; Ubiquitin Thiolesterase 5; Ubiquitin Isopeptidase T; EC 3.4.19.12; EC 3.1.2.15; ISOT

Background

Gene Name: USP5

NCBI Gene Entry: [8078](#)

UniProt Entry: [P45974](#)

Application Information

Molecular Weight: Predicted, 96 kDa, observed, 100 kDa

Clonality: Rabbit monoclonal antibody

Clone ID: 24GB2480

Species Reactivity: Human, mouse, rat

Applications Tested: Western blotting (WB), flow cytometry (FCM), immunocytochemistry (IC)

Immunogen

A synthesized peptide derived from human USP5

Isotype

Rabbit IgG

Storage Buffer

Supplied in PBS (pH 7.4) containing 50% glycerol, and 0.02% sodium azide.

Storage

Store at -20 °C for one year.

Recommended Dilutions

Western Blotting (WB): 1:1,000-1:5,000

Flow Cytometry (FCM): 1:2,000

Immunocytochemistry (IC): 1:100-1:1,000

SUPPORT

SUPPORT@GENUINBIOTECH.COM
TEL: +1-540-855-7041

ORDERS

SALES@GENUINBIOTECH.COM
FAX: +1-540-855-7041

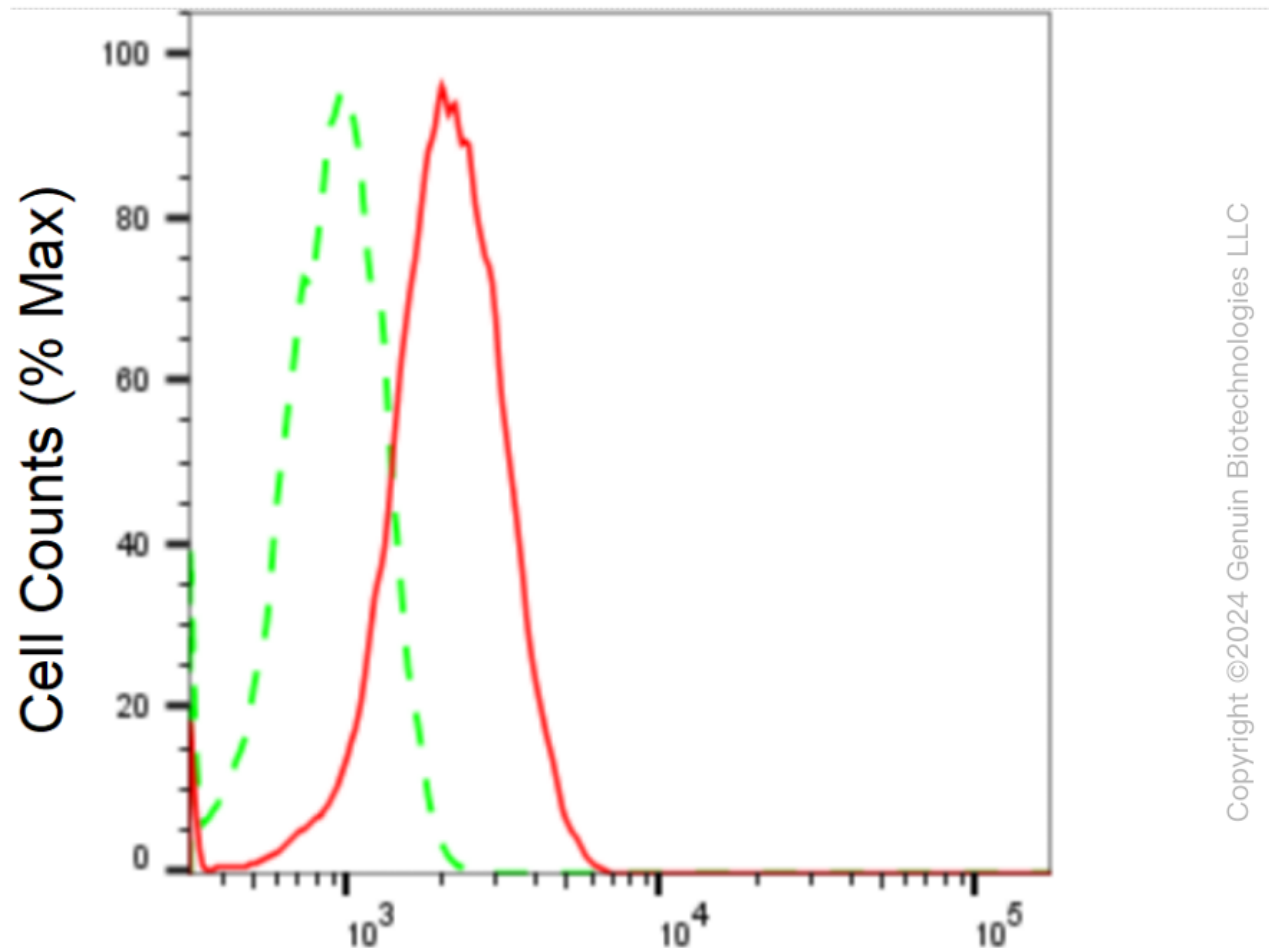
WWW.GENUINBIOTECH.COM

KD-Validated Anti-Ubiquitin Specific Peptidase 5 Recombinant Rabbit Monoclonal Antibody

PAGE 2

Note: This product is for research use only.

Validation Data



Ubiquitin specific peptidase 5-Alexa Fluor® 647

Flow cytometric analysis of Ubiquitin specific peptidase 5 expression in HepG2 cells using anti-Ubiquitin specific peptidase 5 antibody (Cat#62732, 1:2,000). Green, isotype control; red, Ubiquitin specific peptidase 5.

SUPPORT

SUPPORT@GENUINBIOTECH.COM
TEL: +1-540-855-7041

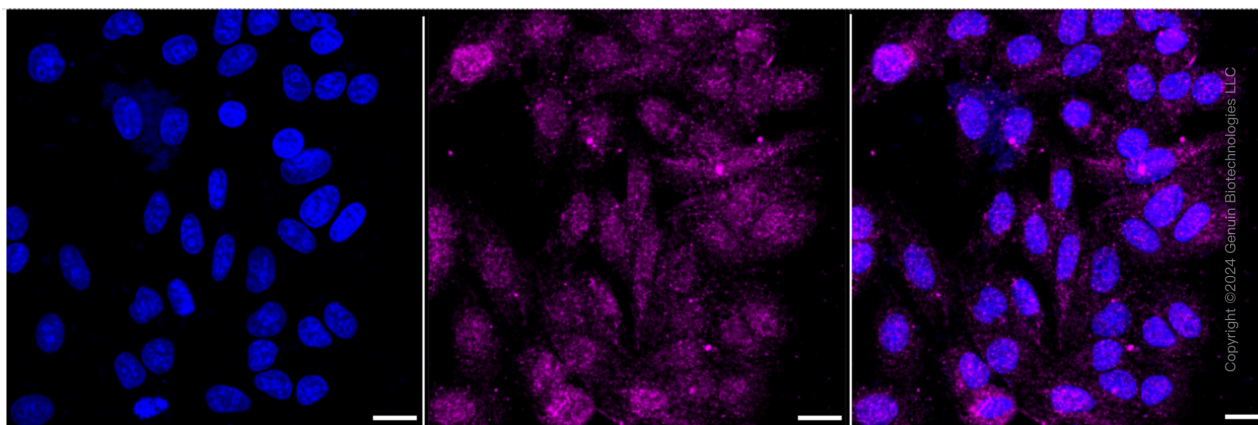
ORDERS

SALES@GENUINBIOTECH.COM
FAX: +1-540-855-7041

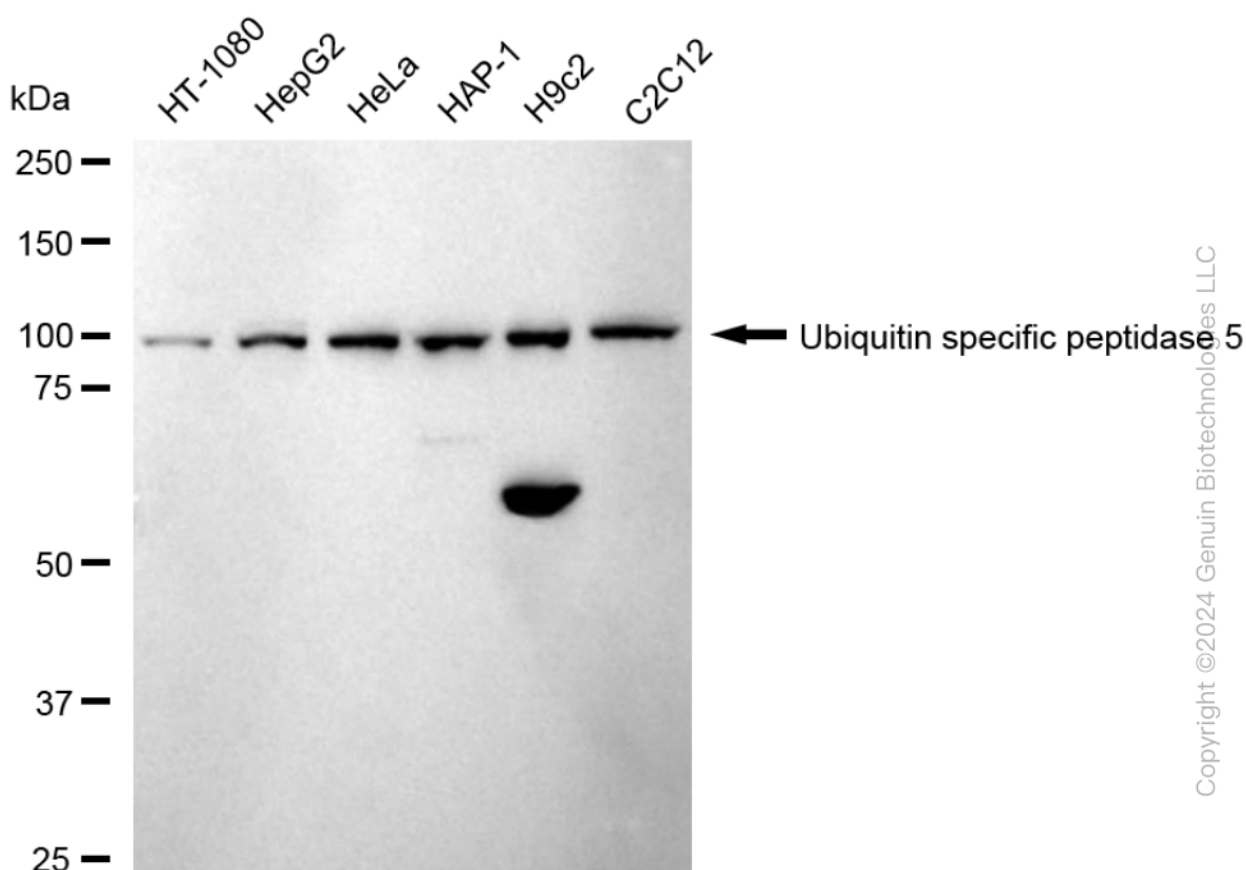
WWW.GENUINBIOTECH.COM

KD-Validated Anti-Ubiquitin Specific Peptidase 5 Recombinant Rabbit Monoclonal Antibody

PAGE 3



Immunocytochemical staining of HepG2 cells with anti-Ubiquitin specific peptidase 5 antibody (Cat#62732, 1:1,000). Nuclei were stained blue with DAPI; Ubiquitin specific peptidase 5 was stained magenta with Alexa Fluor® 647. Images were taken using Leica stellaris 5. Protein abundance based on laser Intensity and smart gain: Medium. Scale bar: 20 μ m.



Western blotting analysis using anti-Ubiquitin specific peptidase 5 antibody (Cat#62732). Total cell lysates (30 μ g) from various cell lines were loaded and separated by SDS-PAGE. The blot was incubated with anti-Ubiquitin specific peptidase 5 antibody (Cat#62732, 1:5,000) and HRP-conjugated goat anti-rabbit secondary antibody (Cat#201, 1:20,000) respectively. Image was

SUPPORT

SUPPORT@GENUINBIOTECH.COM
TEL: +1-540-855-7041

ORDERS

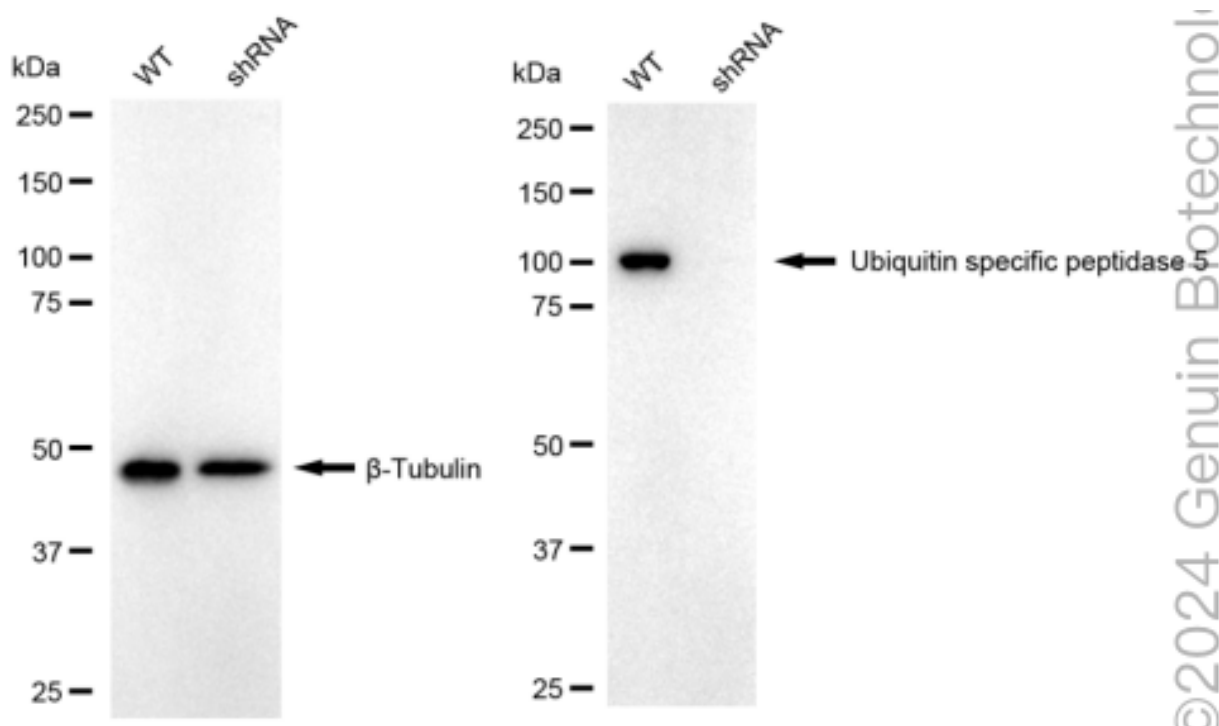
SALES@GENUINBIOTECH.COM
FAX: +1-540-855-7041

WWW.GENUINBIOTECH.COM

KD-Validated Anti-Ubiquitin Specific Peptidase 5 Recombinant Rabbit Monoclonal Antibody

PAGE 4

developed using FeQ™ ECL Substrate Kit (Cat#226).



Western blotting analysis using anti-Ubiquitin specific peptidase 5 antibody (Cat#62732).

Ubiquitin specific peptidase 5 expression in wild type (WT) and Ubiquitin specific peptidase 5 shRNA knockdown (KD) HeLa cells with 20 μ g of total cell lysates. β -Tubulin serves as a loading control. The blot was incubated with anti-Ubiquitin specific peptidase 5 antibody (Cat#62732, 1:5,000) and HRP-conjugated goat anti-rabbit secondary antibody (Cat#201, 1:20,000) respectively. Image was developed using NaQ™ ECL Substrate Kit (Cat#716).

SUPPORT

SUPPORT@GENUINBIOTECH.COM
TEL: +1-540-855-7041

ORDERS

SALES@GENUINBIOTECH.COM
FAX: +1-540-855-7041

WWW.GENUINBIOTECH.COM