

KD-Validated Anti-TNF Receptor Associated Protein 1 Recombinant Rabbit Monoclonal



Catalog #: 62739

Aliases

TRAP1; TNF Receptor Associated Protein 1; HSP75; HSP90L; Tumor Necrosis Factor Type 1 Receptor-Associated Protein; Heat Shock Protein 75 KDa, Mitochondrial; TNFR-Associated Protein 1; HSP 75; TRAP-1; TNF Receptor-Associated Protein 1; Testicular Tissue Protein Li 209

Background

Gene Name: TRAP1

NCBI Gene Entry: [10131](#)

UniProt Entry: [Q12931](#)

Application Information

Molecular Weight: Predicted, 80 kDa, observed, 75 kDa

Clonality: Rabbit monoclonal antibody

Clone ID: 24GB2560

Species Reactivity: Human

Applications Tested: Western blotting (WB), flow cytometry (FCM), immunocytochemistry (IC)

Immunogen

A synthesized peptide derived from human TRAP1

Isotype

Rabbit IgG

Storage Buffer

Supplied in PBS (pH 7.4) containing 50% glycerol, and 0.02% sodium azide.

Storage

Store at -20 °C for one year.

Recommended Dilutions

Western Blotting (WB): 1:1,000-1:5,000

Flow Cytometry (FCM): 1:2,000

Immunocytochemistry (IC): 1:100-1:1,000

Note: This product is for research use only.

SUPPORT

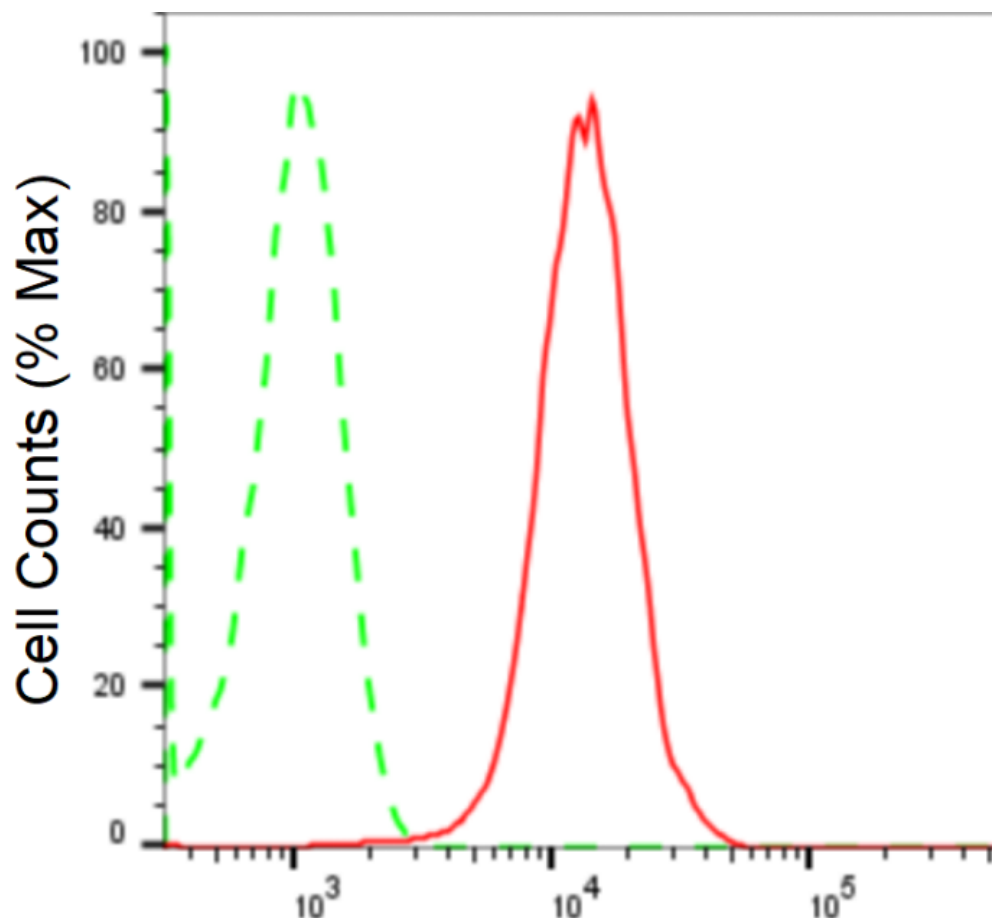
SUPPORT@GENUINBIOTECH.COM
TEL: +1-540-855-7041

ORDERS

SALES@GENUINBIOTECH.COM
FAX: +1-540-855-7041

WWW.GENUINBIOTECH.COM

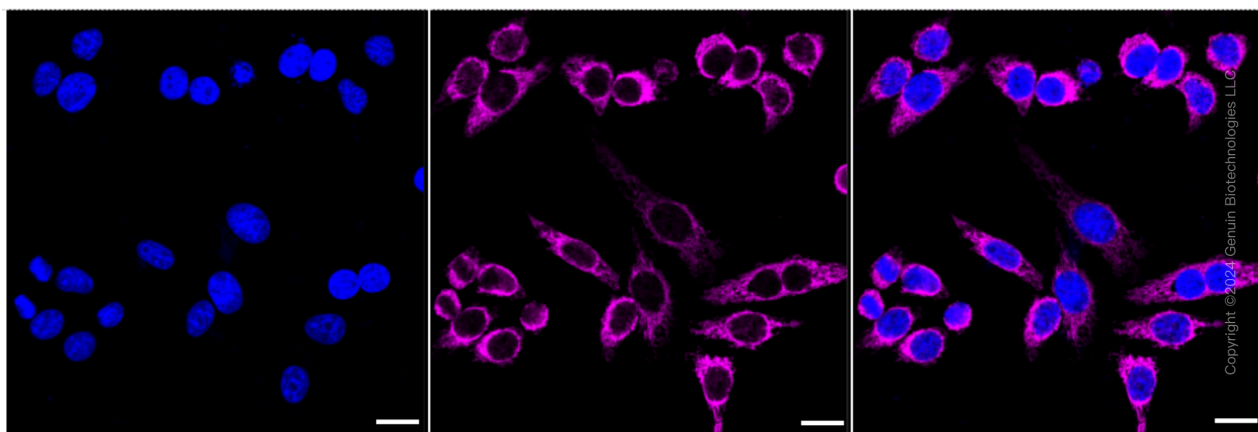
Validation Data



Copyright ©2024 Genuin Biotechnologies LLC

**TNF receptor associated protein 1-Alexa Fluor®
647**

Flow cytometric analysis of TNF receptor associated protein 1 expression in HepG2 cells using anti-TNF receptor associated protein 1 antibody (Cat#62739, 1:2,000). Green, isotype control; red, TNF receptor associated protein 1.



Copyright ©2024 Genuin Biotechnologies LLC

SUPPORT

SUPPORT@GENUINBIOTECH.COM
TEL: +1-540-855-7041

ORDERS

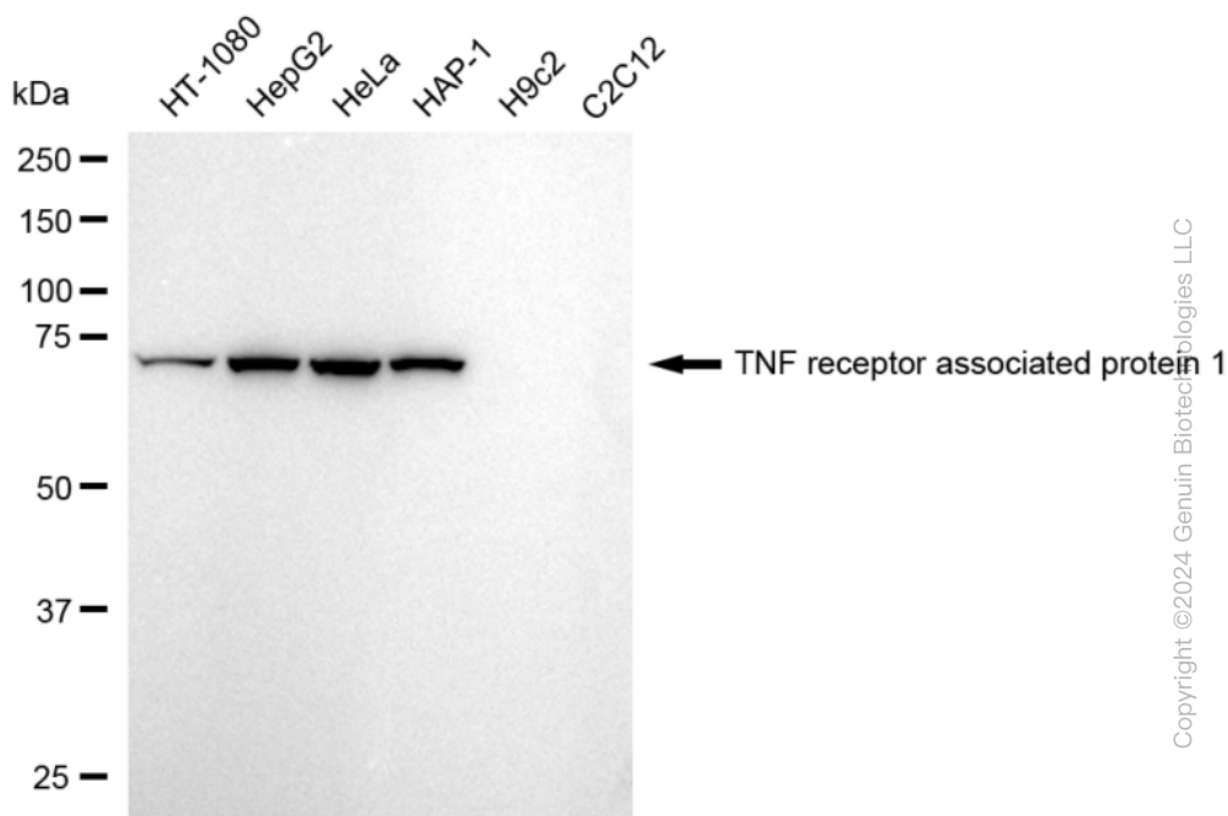
SALES@GENUINBIOTECH.COM
FAX: +1-540-855-7041

WWW.GENUINBIOTECH.COM

KD-Validated Anti-TNF Receptor Associated Protein 1 Recombinant Rabbit Monoclonal

PAGE 3

Immunocytochemical staining of HepG2 cells with anti-TNF receptor associated protein 1 antibody (Cat#62739, 1:1,000). Nuclei were stained blue with DAPI; TNF receptor associated protein 1 was stained magenta with Alexa Fluor® 647. Images were taken using Leica stellaris 5. Protein abundance based on laser Intensity and smart gain: High. Scale bar: 20 µm.



Western blotting analysis using anti-TNF receptor associated protein 1 antibody (Cat#62739). Total cell lysates (30 µg) from various cell lines were loaded and separated by SDS-PAGE. The blot was incubated with anti-TNF receptor associated protein 1 antibody (Cat#62739, 1:5,000) and HRP-conjugated goat anti-rabbit secondary antibody (Cat#201, 1:20,000) respectively. Image was developed using FeQ™ ECL Substrate Kit (Cat#226).

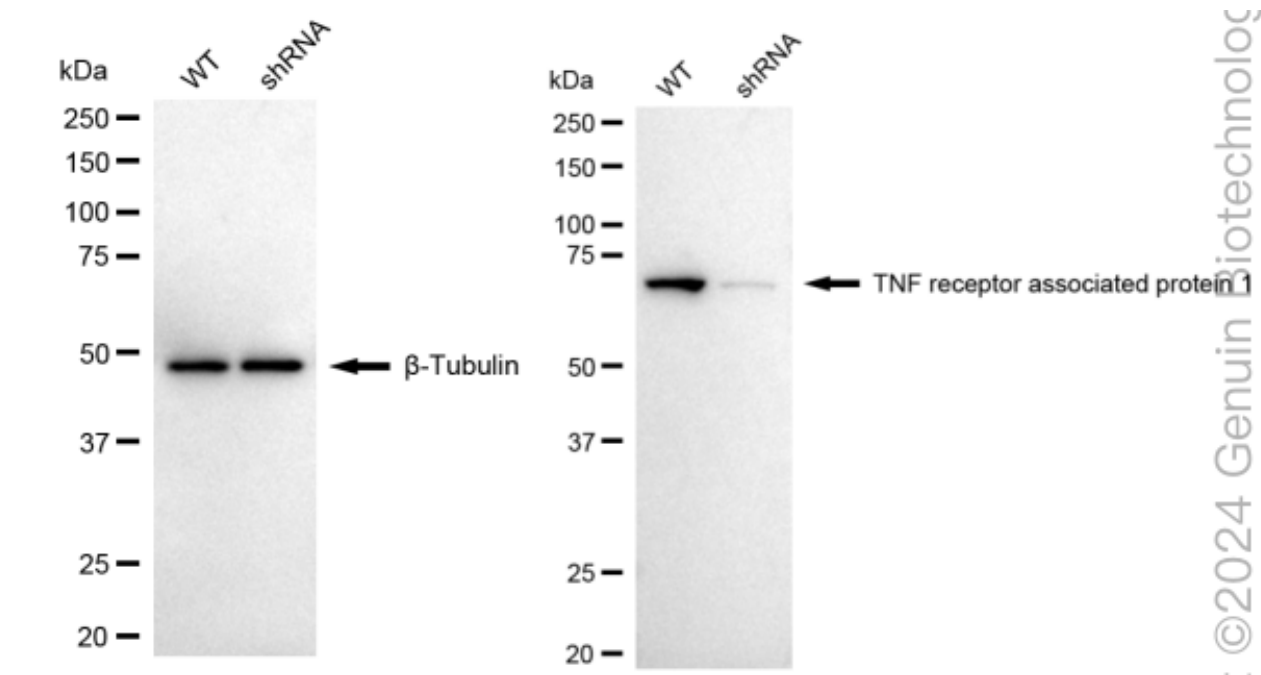
SUPPORT

SUPPORT@GENUINBIOTECH.COM
TEL: +1-540-855-7041

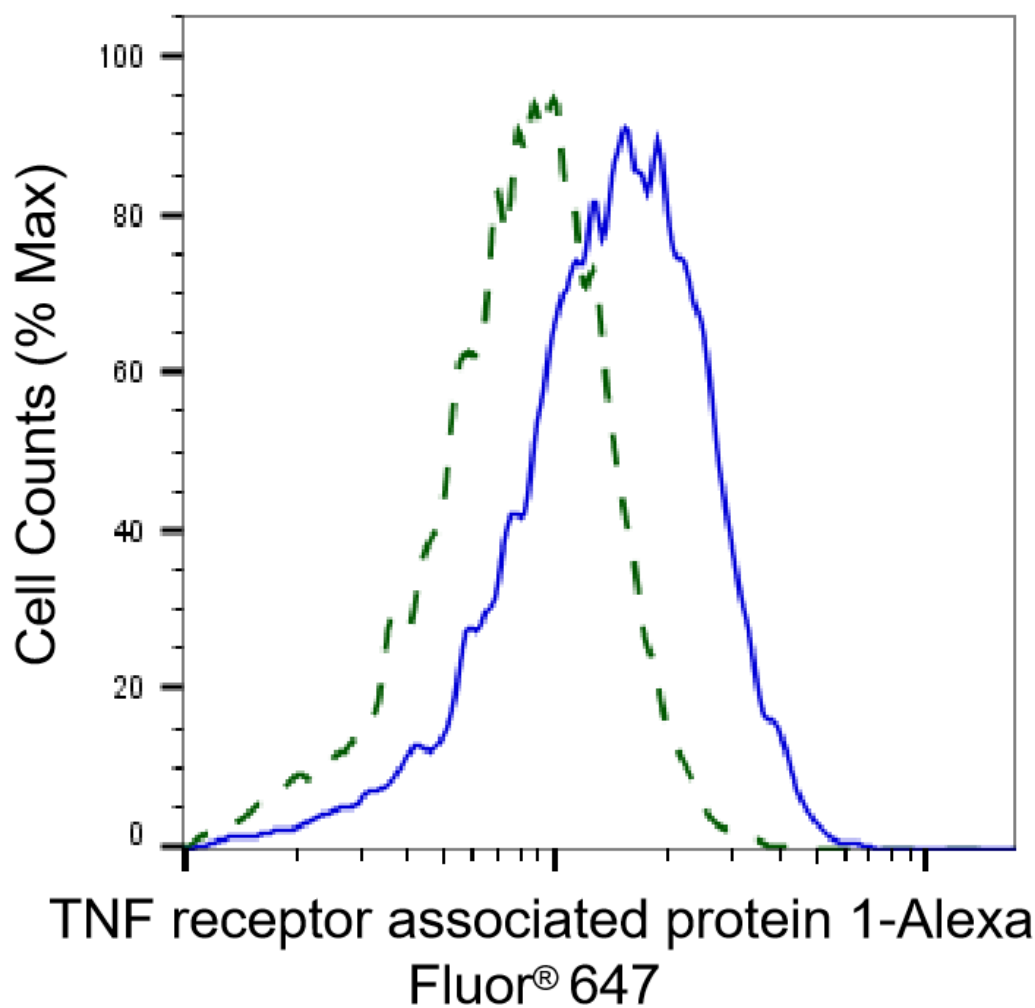
ORDERS

SALES@GENUINBIOTECH.COM
FAX: +1-540-855-7041

WWW.GENUINBIOTECH.COM

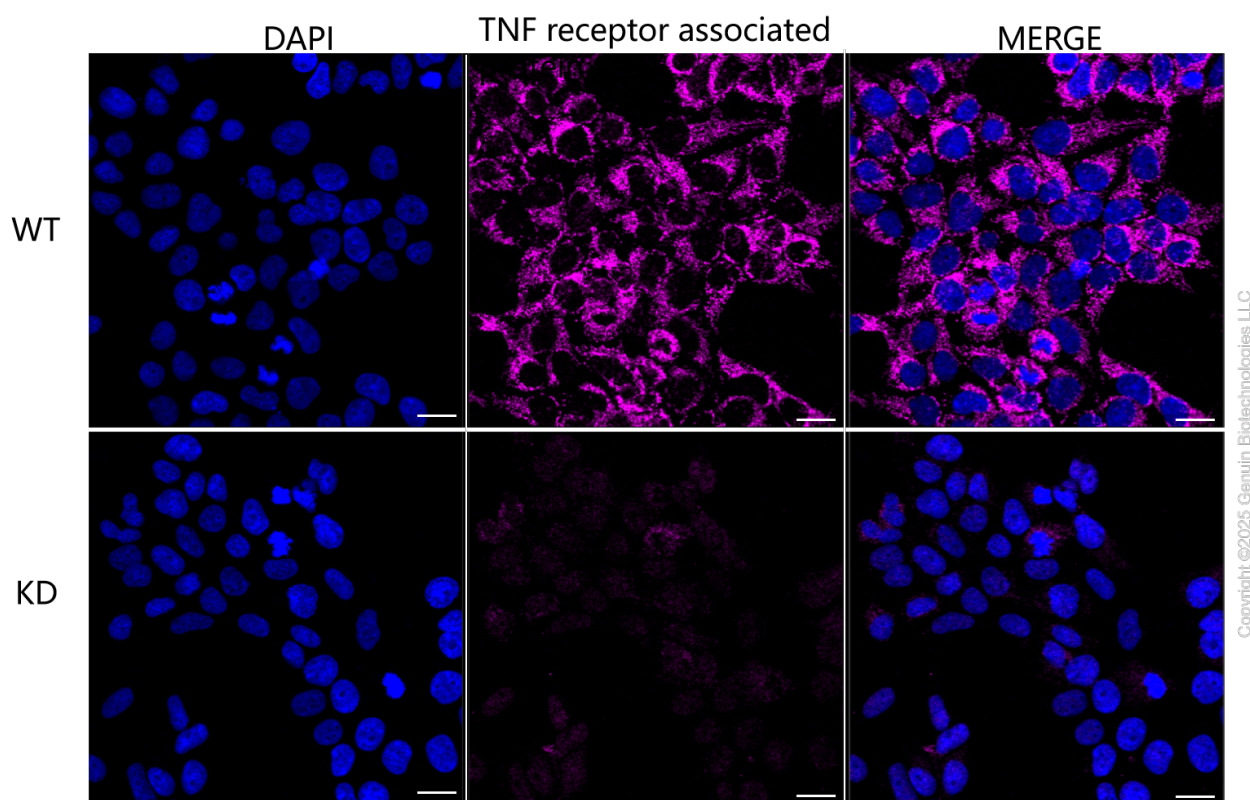


Western blotting analysis using anti-TNF receptor associated protein 1 antibody (Cat#62739). TNF receptor associated protein 1 expression in wild type (WT) and TNF receptor associated protein 1 shRNA knockdown (KD) HeLa cells with 20 μ g of total cell lysates. β -Tubulin serves as a loading control. The blot was incubated with anti-TNF receptor associated protein 1 antibody (Cat#62739, 1:5,000) and HRP-conjugated goat anti-rabbit secondary antibody (Cat#201, 1:20,000) respectively. Image was developed using NaQTM ECL Substrate Kit (Cat#716).



Copyright ©2025 Genuin Biotechnologies LLC

Validation of TNF receptor associated protein 1 knockdown using flow cytometry. Wild-type(WT, Blue) and knockdown(KD, Green) HeLa cells were stained with anti-TNF receptor associated protein 1 antibody (Cat#62739, 1:2,000) and analyzed using BD flow cytometer.



Immunocytochemical staining of HeLa cells using anti-TNF receptor associated protein 1 antibody (Cat#62739, 1:1,000), Top panel: wild-type (WT); Bottom panel: TNF receptor associated protein 1 shRNA knockdown (KD). Nuclei were stained blue with DAPI; TNF receptor associated protein 1 was stained magenta with Alexa Fluor® 647. Scale bar, 20 μ m.