

KD-Validated Anti-Trophoblast Glycoprotein Recombinant Rabbit Monoclonal Antibody



Catalog #: 62759

Aliases

TPBG; Trophoblast Glycoprotein; 5T4; 5T4 Oncofetal Trophoblast Glycoprotein; Wnt-Activated Inhibitory Factor 1; 5T4 Oncotrophoblast Glycoprotein; 5T4 Oncofetal Antigen; 5T4-AG; WAIF1; M6P1; 5T4AG

Background

Gene Name: TPBG

NCBI Gene Entry: [7162](#)

UniProt Entry: [Q13641](#)

Application Information

Molecular Weight: Predicted, 46 kDa, observed, 72 kDa

Clonality: Rabbit monoclonal antibody

Clone ID: 24GB1990

Species Reactivity: Human, mouse, rat

Applications Tested: Western blotting (WB), flow cytometry (FCM), immunocytochemistry (IC)

Immunogen

A synthesized peptide derived from human 5T4

Isotype

Rabbit IgG

Storage Buffer

Supplied in PBS (pH 7.4) containing 50% glycerol, and 0.02% sodium azide.

Storage

Store at -20 °C for one year.

Recommended Dilutions

Western Blotting (WB): 1:1,000-1:5,000

Immunocytochemistry (IC): 1:100-1:1,000

Flow Cytometry (FCM) : 1:2,000

Note: This product is for research use only.

SUPPORT

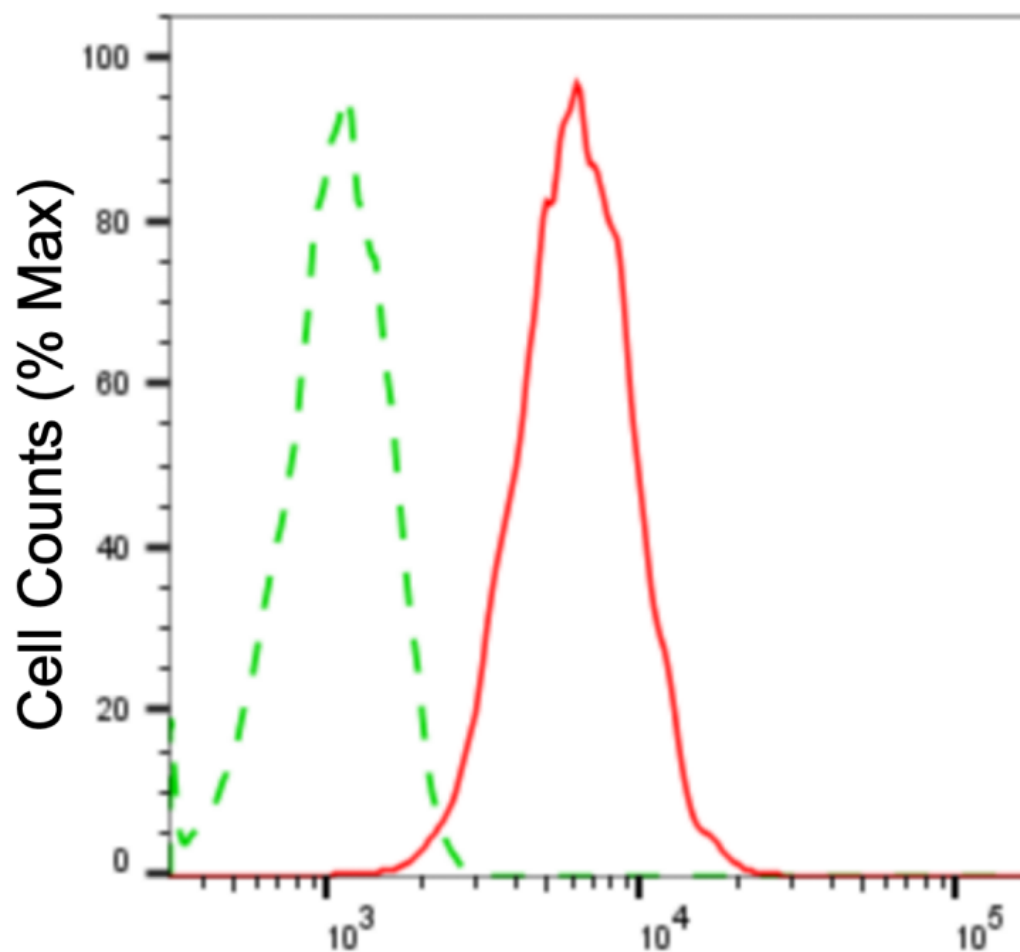
SUPPORT@GENUINBIOTECH.COM
TEL: +1-540-855-7041

ORDERS

SALES@GENUINBIOTECH.COM
FAX: +1-540-855-7041

WWW.GENUINBIOTECH.COM

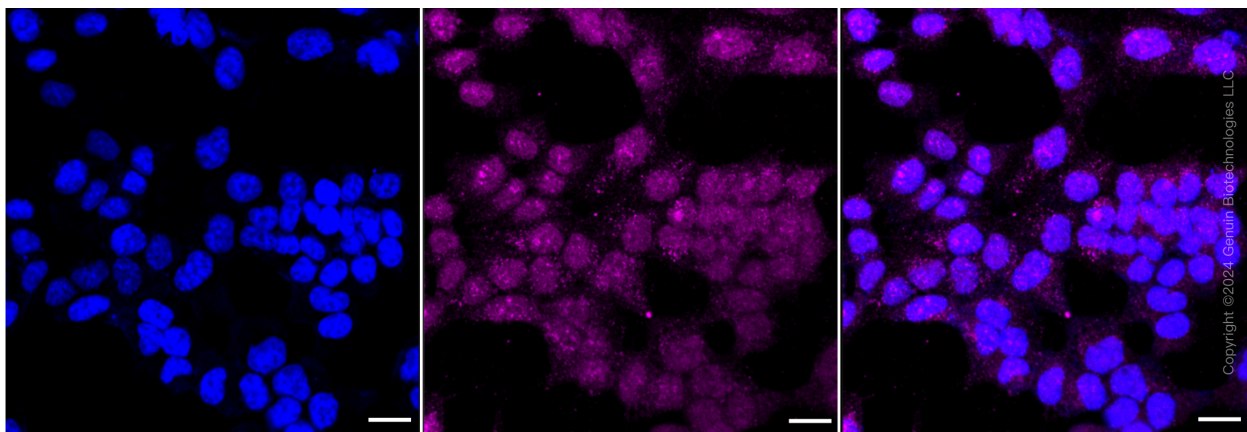
Validation Data



Copyright ©2024 Genuin Biotechnologies LLC

Trophoblast glycoprotein-Alexa Fluor® 647

Flow cytometric analysis of Trophoblast glycoprotein expression in HAP-1 cells using anti-Trophoblast glycoprotein antibody (Cat#62759, 1:2,000). Green, isotype control; red, Trophoblast glycoprotein.



Copyright ©2024 Genuin Biotechnologies LLC

SUPPORT

SUPPORT@GENUINBIOTECH.COM
TEL: +1-540-855-7041

ORDERS

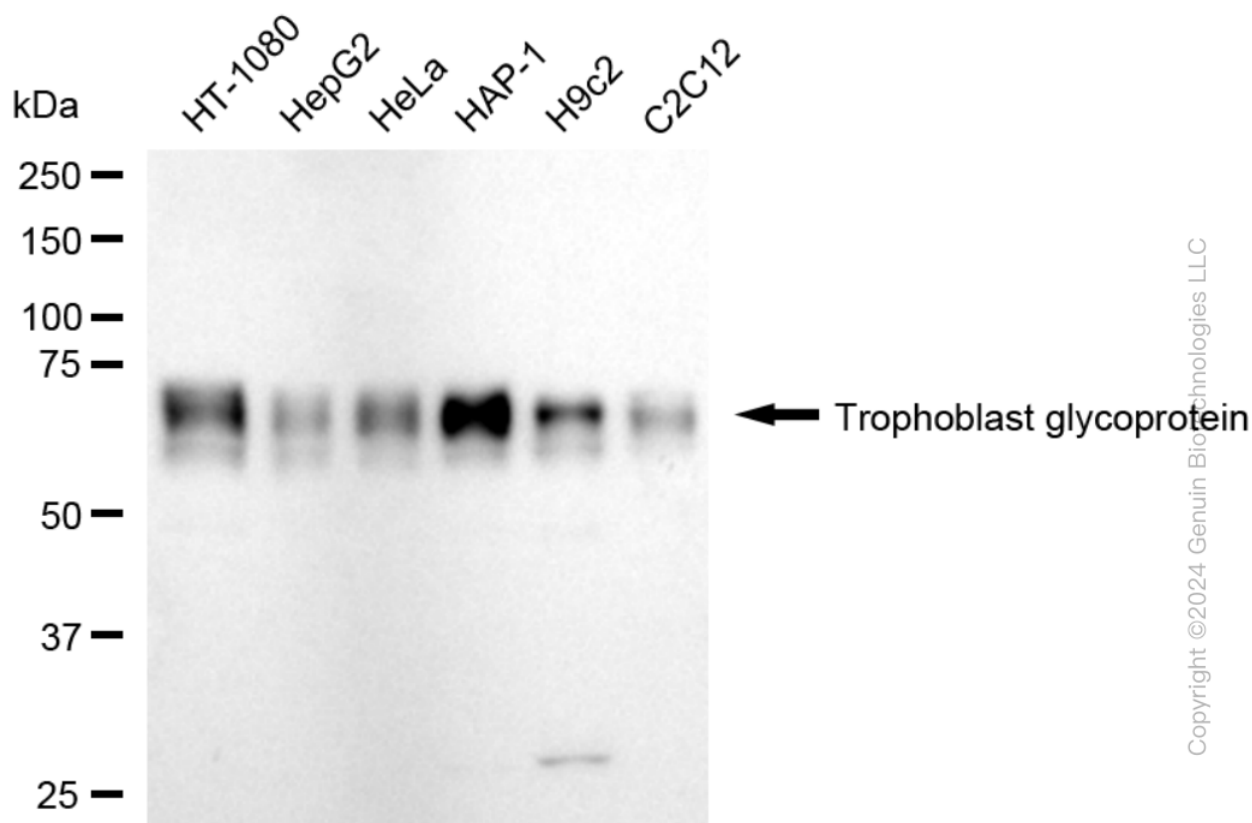
SALES@GENUINBIOTECH.COM
FAX: +1-540-855-7041

WWW.GENUINBIOTECH.COM

KD-Validated Anti-Trophoblast Glycoprotein Recombinant Rabbit Monoclonal Antibody

PAGE 3

Immunocytochemical staining of HAP-1 with anti-trophoblast glycoprotein antibody (Cat#62759, 1:1,000). Nuclei were stained blue with DAPI; Trophoblast glycoprotein was stained magenta with Alexa Fluor® 647. Images were taken using Leica stellaris 5. Protein abundance based on laser Intensity and smart gain: Medium. Scale bar: 20 μ m.



Western blotting analysis using anti-Trophoblast glycoprotein antibody (Cat#62759). Total cell lysates (30 μ g) from various cell lines were loaded and separated by SDS-PAGE. The blot was incubated with anti-Trophoblast glycoprotein antibody (Cat#62759, 1:5,000) and HRP-conjugated goat anti-rabbit secondary antibody (Cat#201, 1:20,000) respectively. Image was developed using FeQ™ ECL Substrate Kit (Cat#226).

SUPPORT

SUPPORT@GENUINBIOTECH.COM
TEL: +1-540-855-7041

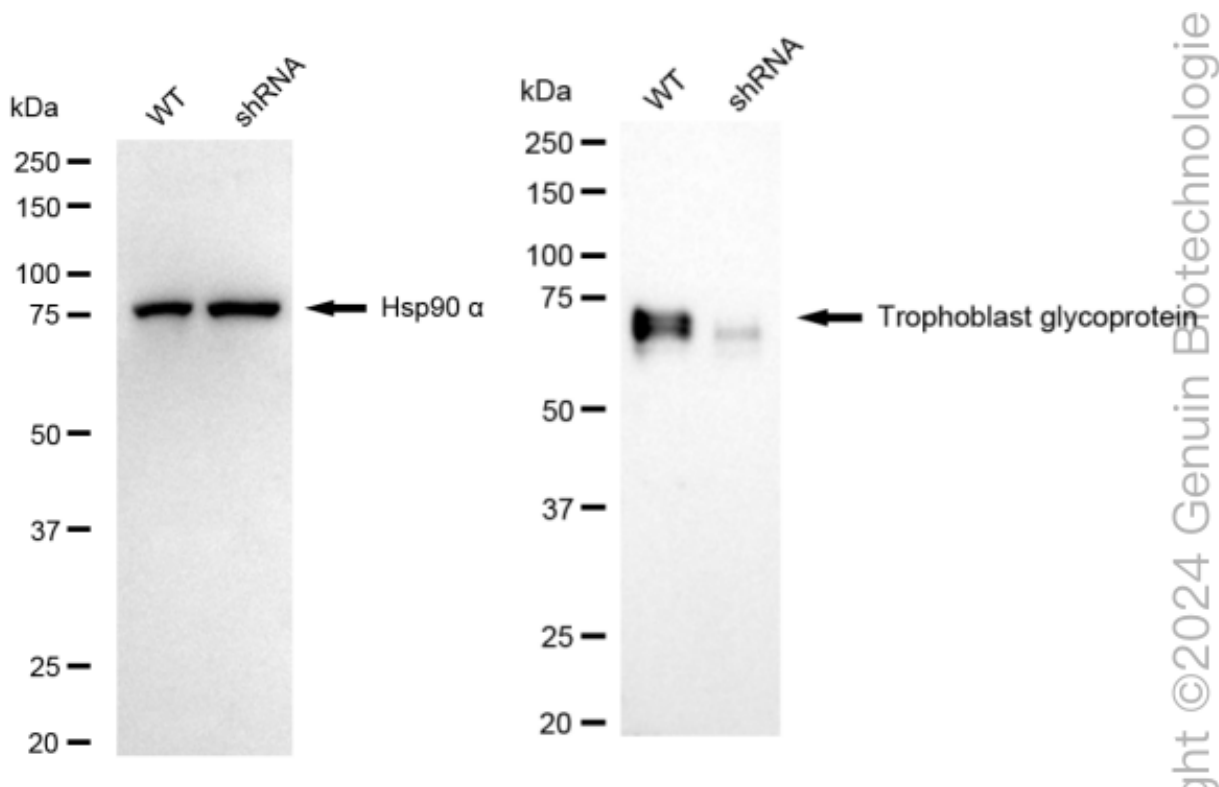
ORDERS

SALES@GENUINBIOTECH.COM
FAX: +1-540-855-7041

WWW.GENUINBIOTECH.COM

KD-Validated Anti-Trophoblast Glycoprotein Recombinant Rabbit Monoclonal Antibody

PAGE 4



SUPPORT

SUPPORT@GENUINBIOTECH.COM
TEL: +1-540-855-7041

ORDERS

SALES@GENUINBIOTECH.COM
FAX: +1-540-855-7041

WWW.GENUINBIOTECH.COM