

KD-Validated Anti-UQCRFS1 Recombinant Rabbit Monoclonal Antibody



Catalog #: 62783

Aliases

UQCRFS1; Ubiquinol-Cytochrome C Reductase, Rieske Iron-Sulfur Polypeptide 1; RISP; Cytochrome B-C1 Complex Subunit 5; UQCR5; RIS1; RIP1; Cytochrome B-C1 Complex Subunit Rieske, Mitochondrial; Ubiquinol-Cytochrome C Reductase Iron-Sulfur Subunit; Rieske Iron-Sulfur Protein; Rieske Protein UQCRFS1; Complex III Subunit 5; Epididymis Secretory Sperm Binding Protein; EC 1.10.2.2; EC 7.1.1.8; MC3DN10

Background

Gene Name: UQCRFS1

NCBI Gene Entry: [7386](#)

UniProt Entry: [P47985](#)

Application Information

Molecular Weight: Predicted, 30 kDa, observed, 23 kDa

Clonality: Rabbit monoclonal antibody

Clone ID: 24GB2460

Species Reactivity: Human, mouse, rat

Applications Tested: Western blotting (WB), flow cytometry (FCM), immunocytochemistry (IC)

Immunogen

A synthesized peptide derived from human UQCRFS1

Isotype

Rabbit IgG

Storage Buffer

Supplied in PBS (pH 7.4) containing 50% glycerol, and 0.02% sodium azide.

Storage

Store at -20 °C for one year.

Recommended Dilutions

Western Blotting (WB): 1:1,000-1:5,000

Flow Cytometry (FCM): 1:2,000

Immunocytochemistry (IC): 1:100-1:1,000

SUPPORT

SUPPORT@GENUINBIOTECH.COM
TEL: +1-540-855-7041

ORDERS

SALES@GENUINBIOTECH.COM
FAX: +1-540-855-7041

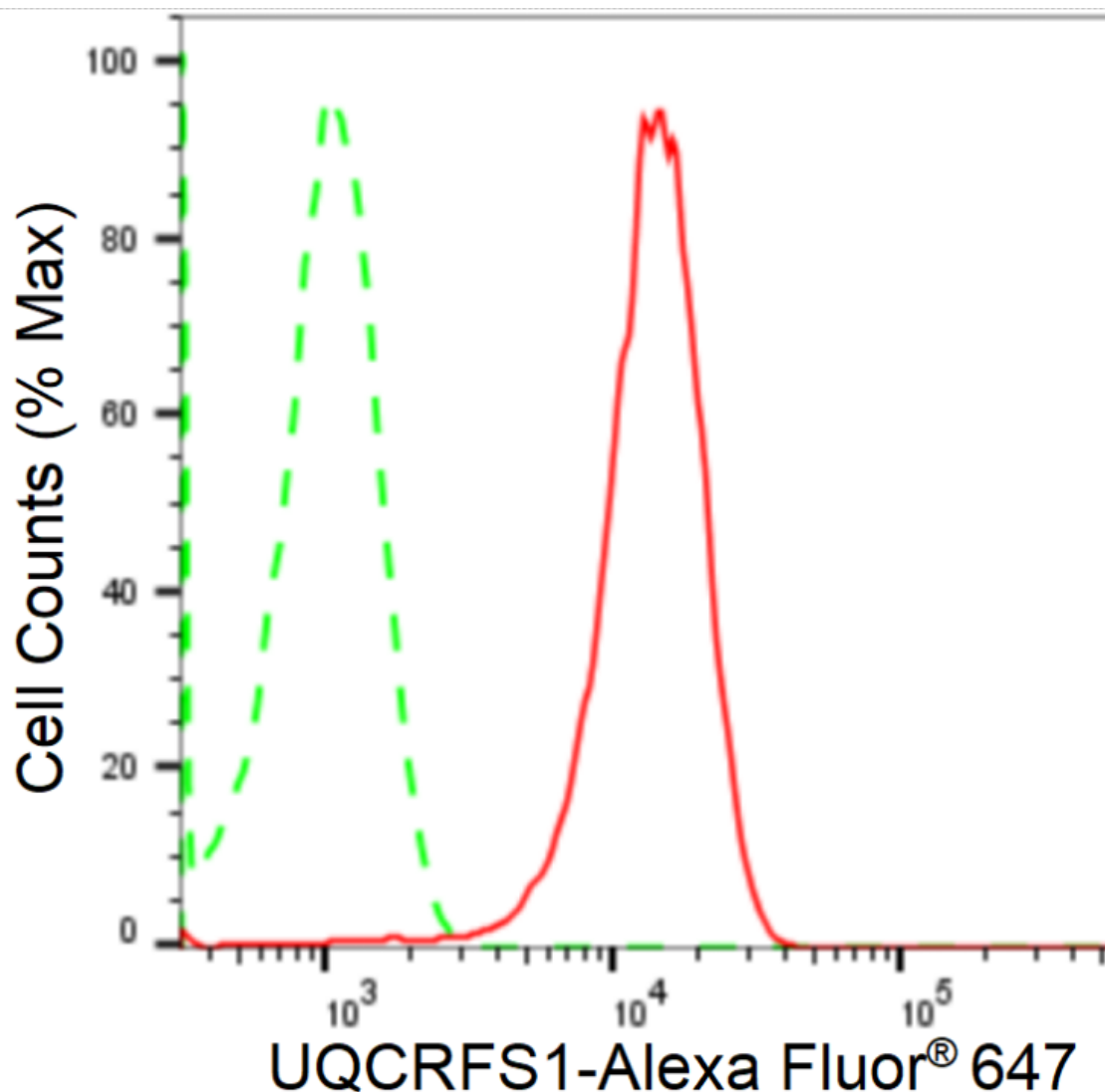
WWW.GENUINBIOTECH.COM

KD-Validated Anti-UQCRFS1 Recombinant Rabbit Monoclonal Antibody

PAGE 2

Note: This product is for research use only.

Validation Data



Copyright ©2024 Genuin Biotechnologies LLC

Flow cytometric analysis of UQCRFS1 expression in HepG2 cells using anti-UQCRFS1 antibody (Cat#62783, 1:2,000). Green, isotype control; red, UQCRFS1.

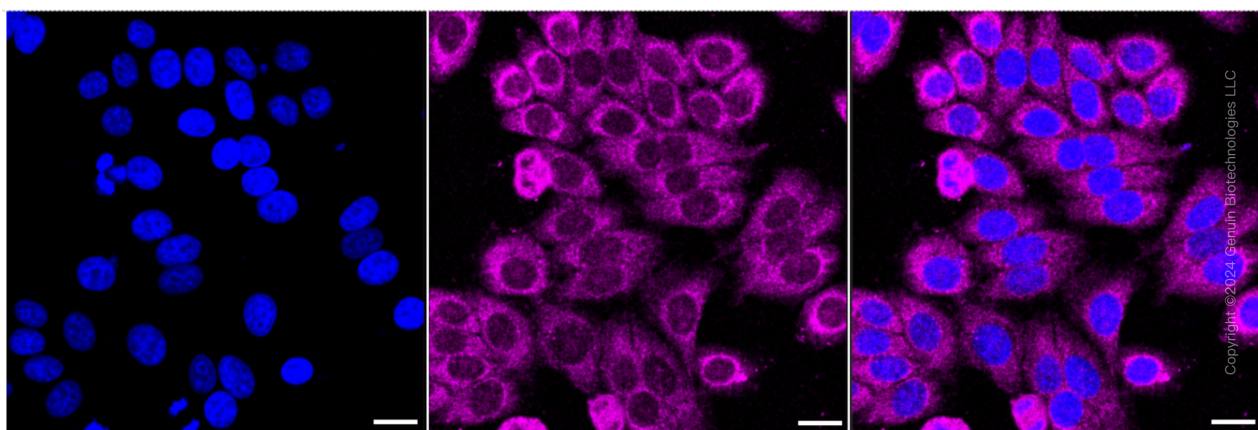
SUPPORT

SUPPORT@GENUINBIOTECH.COM
TEL: +1-540-855-7041

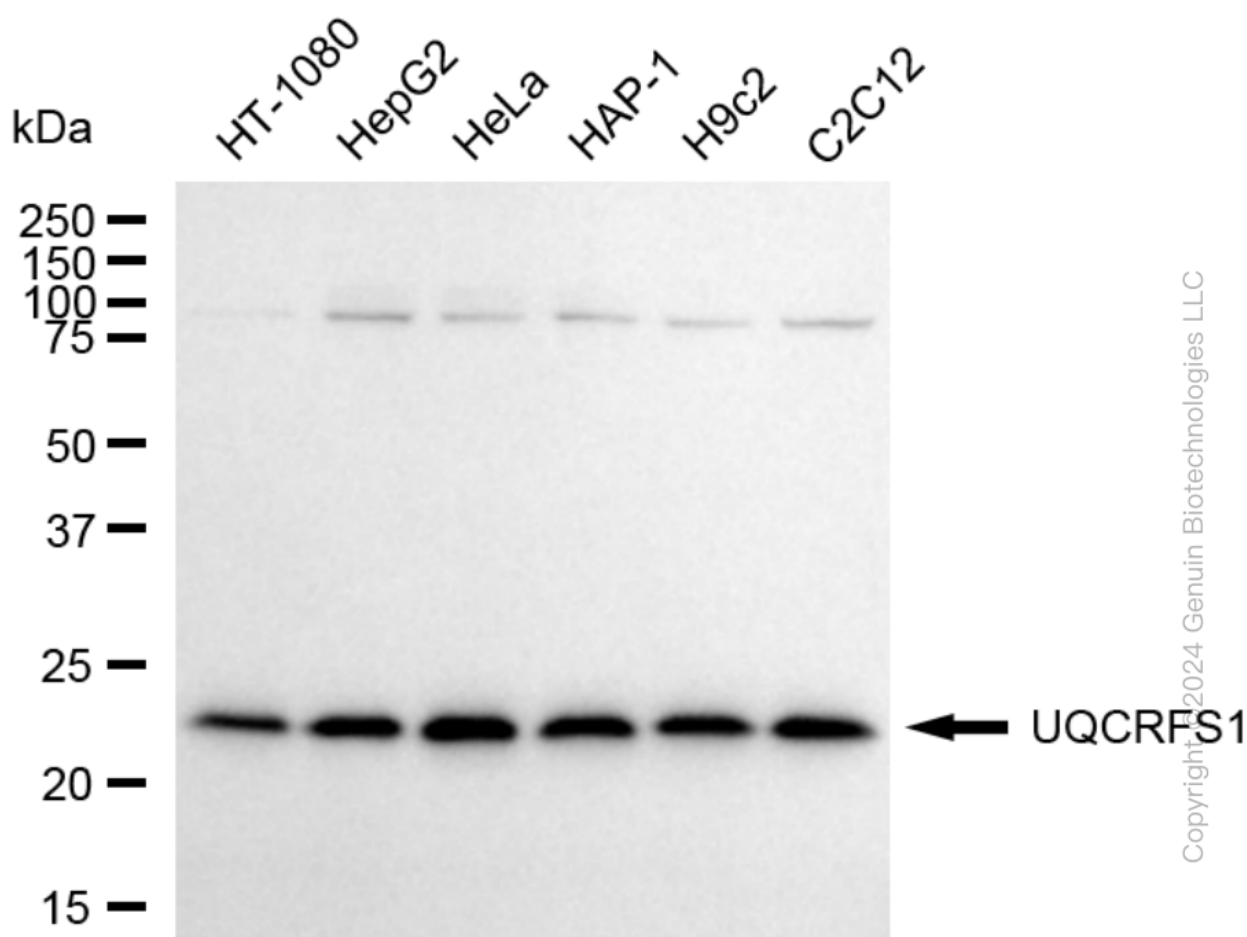
ORDERS

SALES@GENUINBIOTECH.COM
FAX: +1-540-855-7041

WWW.GENUINBIOTECH.COM



Immunocytochemical staining of HepG2 cells with anti-UQCRFS1 antibody (Cat#62783, 1:1,000). Nuclei were stained blue with DAPI; UQCRFS1 was stained magenta with Alexa Fluor® 647. Images were taken using Leica stellaris 5. Protein abundance based on laser Intensity and smart gain: Medium. Scale bar: 20 µm.



Western blotting analysis using anti-UQCRFS1 antibody (Cat#62783). Total cell lysates (30 µg) from various cell lines were loaded and separated by SDS-PAGE. The blot was incubated with anti-UQCRFS1 antibody (Cat#62783, 1:5,000) and HRP-conjugated goat anti-rabbit secondary

SUPPORT

SUPPORT@GENUINBIOTECH.COM
TEL: +1-540-855-7041

ORDERS

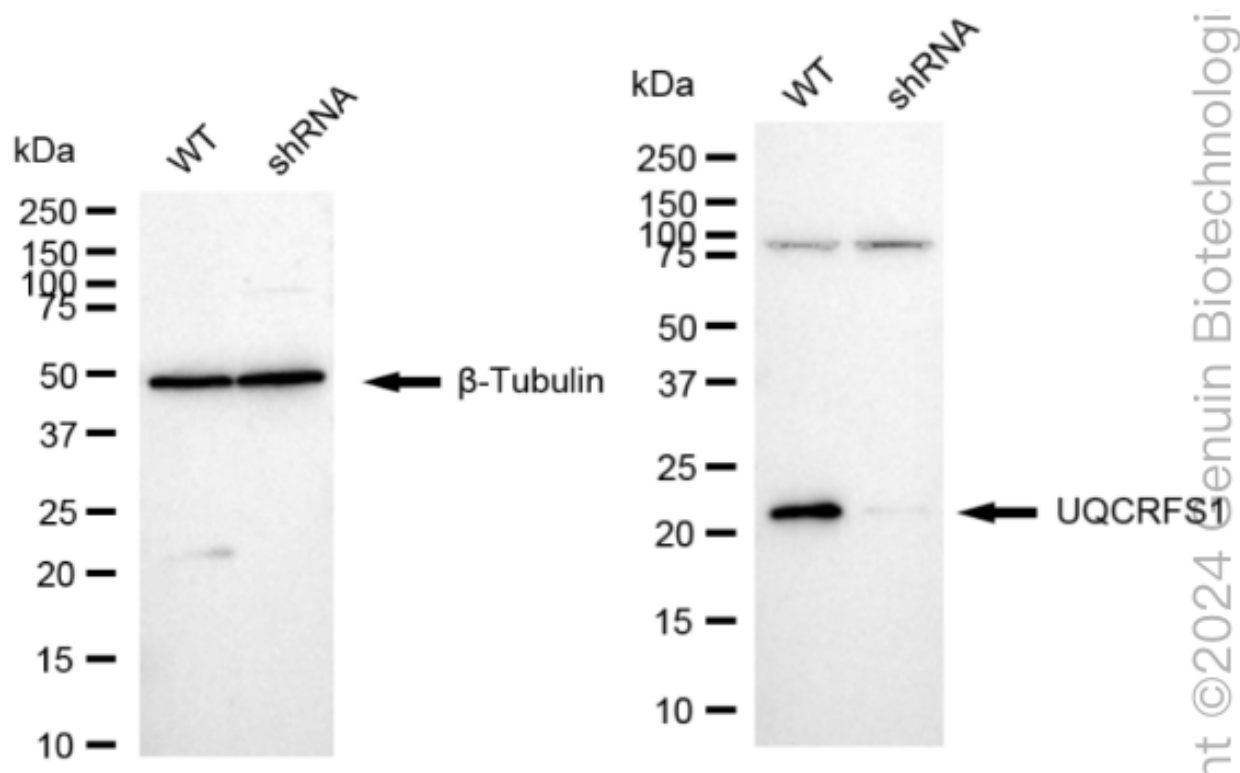
SALES@GENUINBIOTECH.COM
FAX: +1-540-855-7041

WWW.GENUINBIOTECH.COM

KD-Validated Anti-UQCRFS1 Recombinant Rabbit Monoclonal Antibody

PAGE 4

antibody (Cat#201, 1:20,000) respectively. Image was developed using FeQ™ ECL Substrate Kit (Cat#226).



Western blotting analysis using anti-UQCRFS1 antibody (Cat#62783). UQCRFS1 expression in wild type (WT) and UQCRFS1 shRNA knockdown (KD) HT-1080 cells with 20 µg of total cell lysates. β-Tubulin serves as a loading control. The blot was incubated with anti-UQCRFS1 antibody (Cat#62783, 1:5,000) and HRP-conjugated goat anti-rabbit secondary antibody (Cat#201, 1:20,000) respectively. Image was developed using NaQ™ ECL Substrate Kit (Cat#716).

SUPPORT

SUPPORT@GENUINBIOTECH.COM
TEL: +1-540-855-7041

ORDERS

SALES@GENUINBIOTECH.COM
FAX: +1-540-855-7041

WWW.GENUINBIOTECH.COM