

KD-Validated Anti-Synaptosome Associated Protein 25 Recombinant Rabbit Monoclonal



Catalog #: 62795

Aliases

SNAP25; Synaptosome Associated Protein 25; SNAP-25; DJ1068F16.2; BA416N4.2; RIC-4; RIC4; SEC9; SNAP; Resistance To Inhibitors Of Cholinesterase 4 Homolog; Synaptosomal-Associated Protein, 25kDa; Synaptosomal-Associated Protein 25; SUP; Synaptosomal-Associated 25 KDa Protein; Synaptosome Associated Protein 25kDa; Super Protein; CMS18

Background

Gene Name: SNAP25

NCBI Gene Entry: [6616](#)

UniProt Entry: [P60880](#)

Application Information

Molecular Weight: Predicted, 23 kDa, observed, 25 kDa

Clonality: Rabbit monoclonal antibody

Clone ID: 24GB2640

Species Reactivity: Human

Applications Tested: Western blotting (WB), immunocytochemistry (IC)

Immunogen

A synthesized peptide derived from human SNAP25

Isotype

Rabbit IgG

Storage Buffer

Supplied in PBS (pH 7.4) containing 50% glycerol, and 0.02% sodium azide.

Storage

Store at -20 °C for one year.

Recommended Dilutions

Western Blotting (WB): 1:1,000-1:5,000

Immunocytochemistry (IC): 1:100-1:1,000

Note: This product is for research use only.

SUPPORT

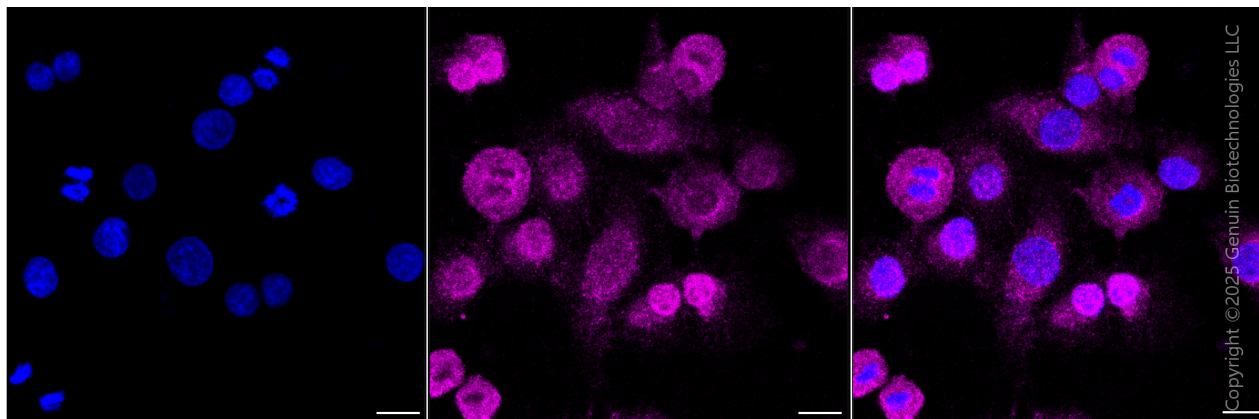
SUPPORT@GENUINBIOTECH.COM
TEL: +1-540-855-7041

ORDERS

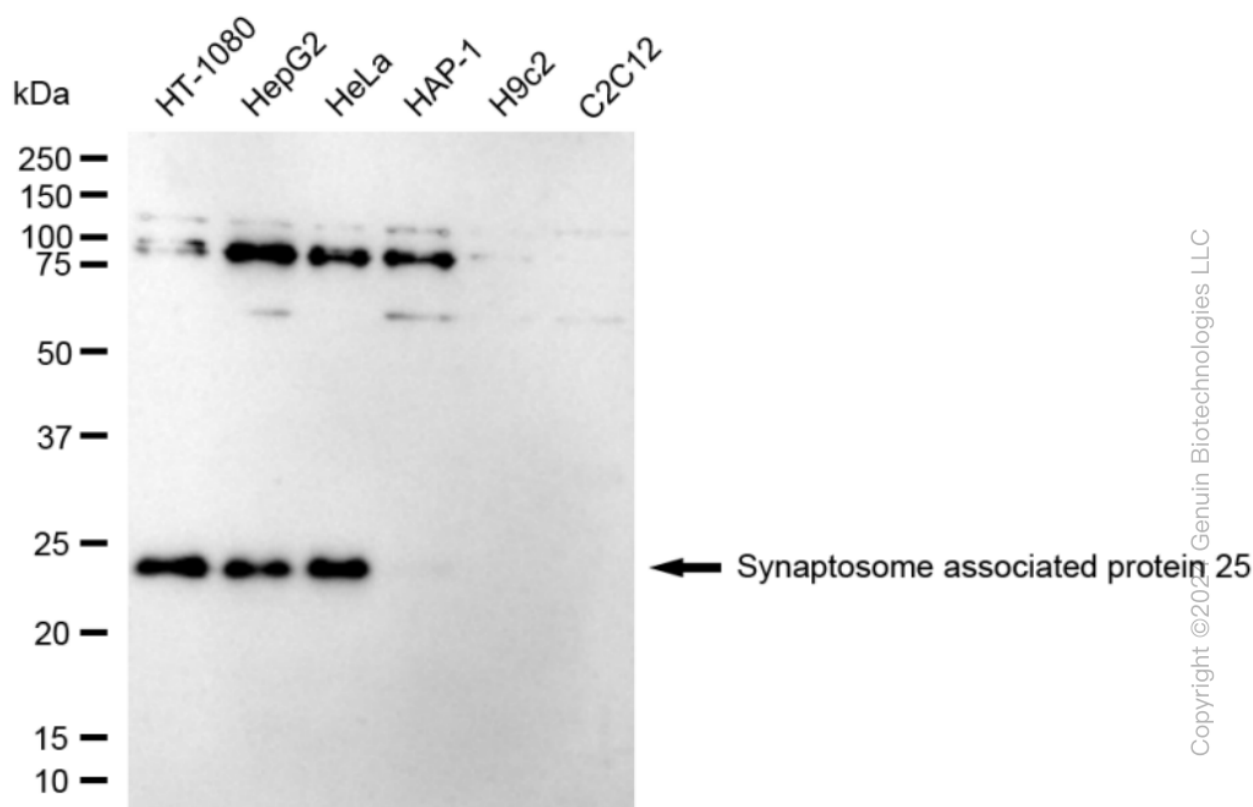
SALES@GENUINBIOTECH.COM
FAX: +1-540-855-7041

WWW.GENUINBIOTECH.COM

Validation Data



Immunocytochemical staining of HT-1080 cells with anti-Synaptosome associated protein 25 antibody (Cat#62795, 1:1,000). Nuclei were stained blue with DAPI; Synaptosome associated protein 25 was stained magenta with Alexa Fluor® 647. Images were taken using Leica stellaris 5. Protein abundance based on laser Intensity and smart gain: Medium. Scale bar, 20 μ m.

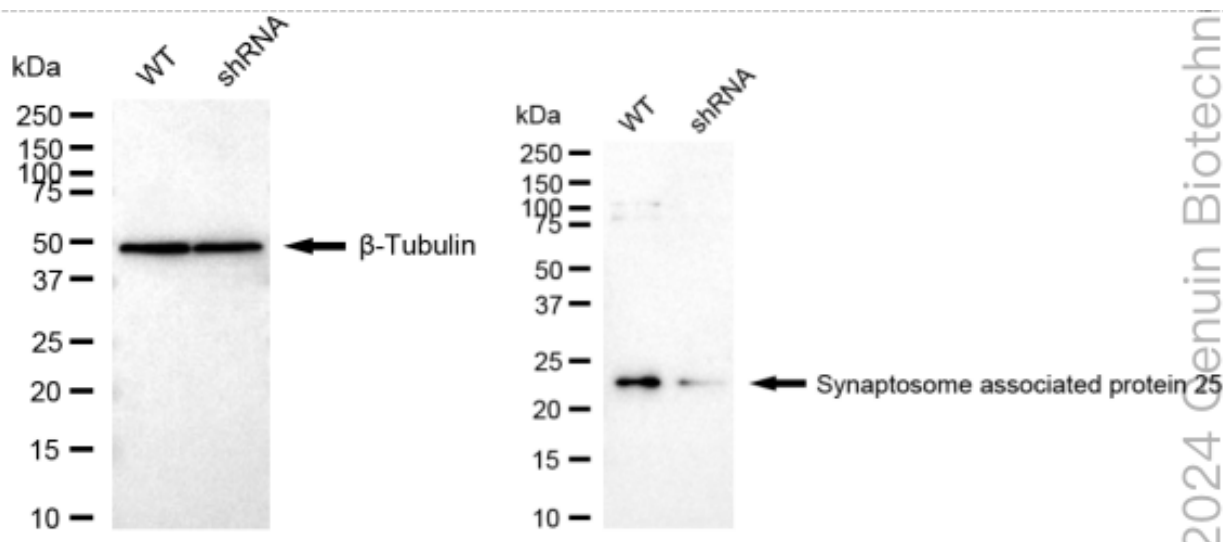


Western blotting analysis using anti-Synaptosome associated protein 25 antibody (Cat#62795). Total cell lysates (30 μ g) from various cell lines were loaded and separated by SDS-PAGE. The blot was incubated with anti-Synaptosome associated protein 25 antibody (Cat#62795, 1:5,000) and HRP-conjugated goat anti-rabbit secondary antibody (Cat#201, 1:20,000) respectively. Image

KD-Validated Anti-Synaptosome Associated Protein 25 Recombinant Rabbit Monoclonal

PAGE 3

was developed using FeQ™ ECL Substrate Kit (Cat#226).



Western blotting analysis using anti-Synaptosome associated protein 25 antibody (Cat#62795). Synaptosome associated protein 25 expression in wild type (WT) and Synaptosome associated protein 25 shRNA knockdown (KD) HT-1080 cells with 20 µg of total cell lysates. β-Tubulin serves as a loading control. The blot was incubated with anti-Synaptosome associated protein 25 antibody (Cat#62795, 1:5,000) and HRP-conjugated goat anti-rabbit secondary antibody (Cat#201, 1:20,000) respectively. Image was developed using NaQ™ ECL Substrate Kit (Cat#716).

SUPPORT

SUPPORT@GENUINBIOTECH.COM
TEL: +1-540-855-7041

ORDERS

SALES@GENUINBIOTECH.COM
FAX: +1-540-855-7041

WWW.GENUINBIOTECH.COM