

KD-Validated Anti-ZPR1 Zinc Finger Recombinant Rabbit Monoclonal Antibody



Catalog #: 62800

Aliases

ZPR1; ZPR1 Zinc Finger; Zinc Finger Protein 259; ZNF259; Zinc Finger Protein ZPR1; GKAF

Background

Gene Name: ZPR1

NCBI Gene Entry: [8882](#)

UniProt Entry: [O75312](#)

Application Information

Molecular Weight: Predicted, 51 kDa, observed, 51 kDa

Clonality: Rabbit monoclonal antibody

Clone ID: 24GB1805

Species Reactivity: Human, mouse, rat

Applications Tested: Western blotting (WB), flow cytometry (FCM), immunocytochemistry (IC)

Immunogen

A synthesized peptide derived from human ZNF259

Isotype

Rabbit IgG

Storage Buffer

Supplied in PBS (pH 7.4) containing 50% glycerol, and 0.02% sodium azide.

Storage

Store at -20 °C for one year.

Recommended Dilutions

Western Blotting (WB): 1:1,000-1:5,000

Flow Cytometry (FCM): 1:2,000

Immunocytochemistry (IC): 1:100-1:1,000

Note: This product is for research use only.

Validation Data

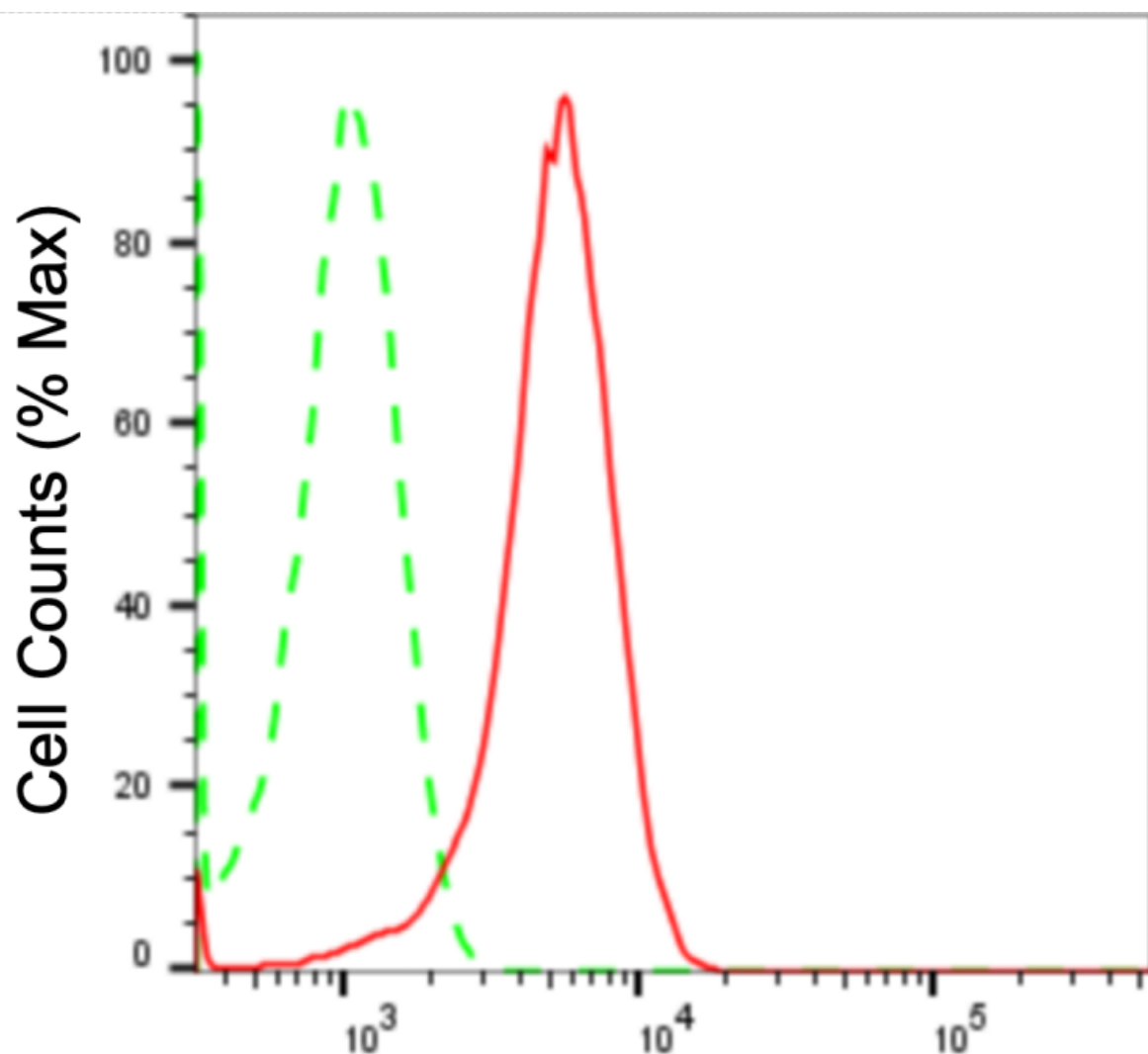
SUPPORT

SUPPORT@GENUINBIOTECH.COM
TEL: +1-540-855-7041

ORDERS

SALES@GENUINBIOTECH.COM
FAX: +1-540-855-7041

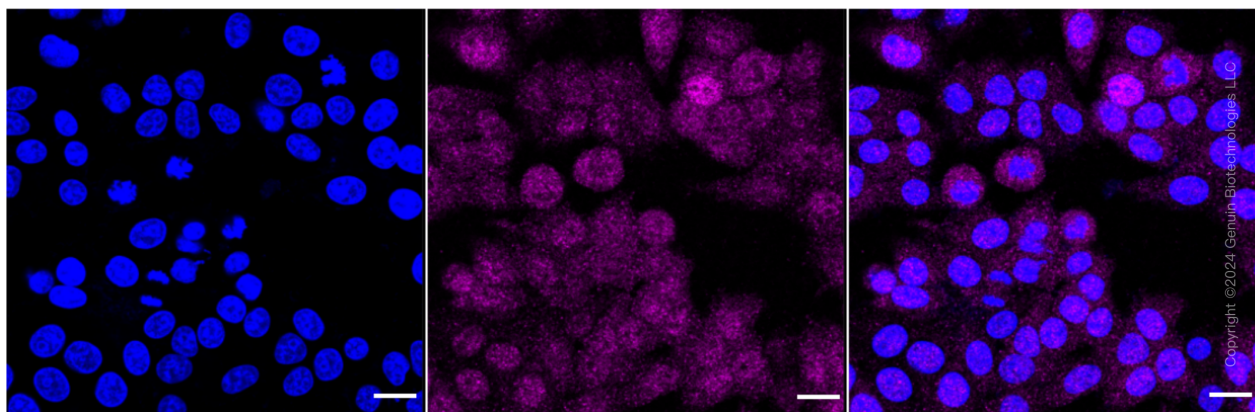
WWW.GENUINBIOTECH.COM



Copyright ©2024 Genuin Biotechnologies LLC

ZPR1 zinc finger-Alexa Fluor® 647

Flow cytometric analysis of ZPR1 zinc finger expression in HepG2 cells using anti-ZPR1 zinc finger antibody (Cat#62800, 1:2,000). Green, isotype control; red, ZPR1 zinc finger.



SUPPORT

SUPPORT@GENUINBIOTECH.COM
TEL: +1-540-855-7041

ORDERS

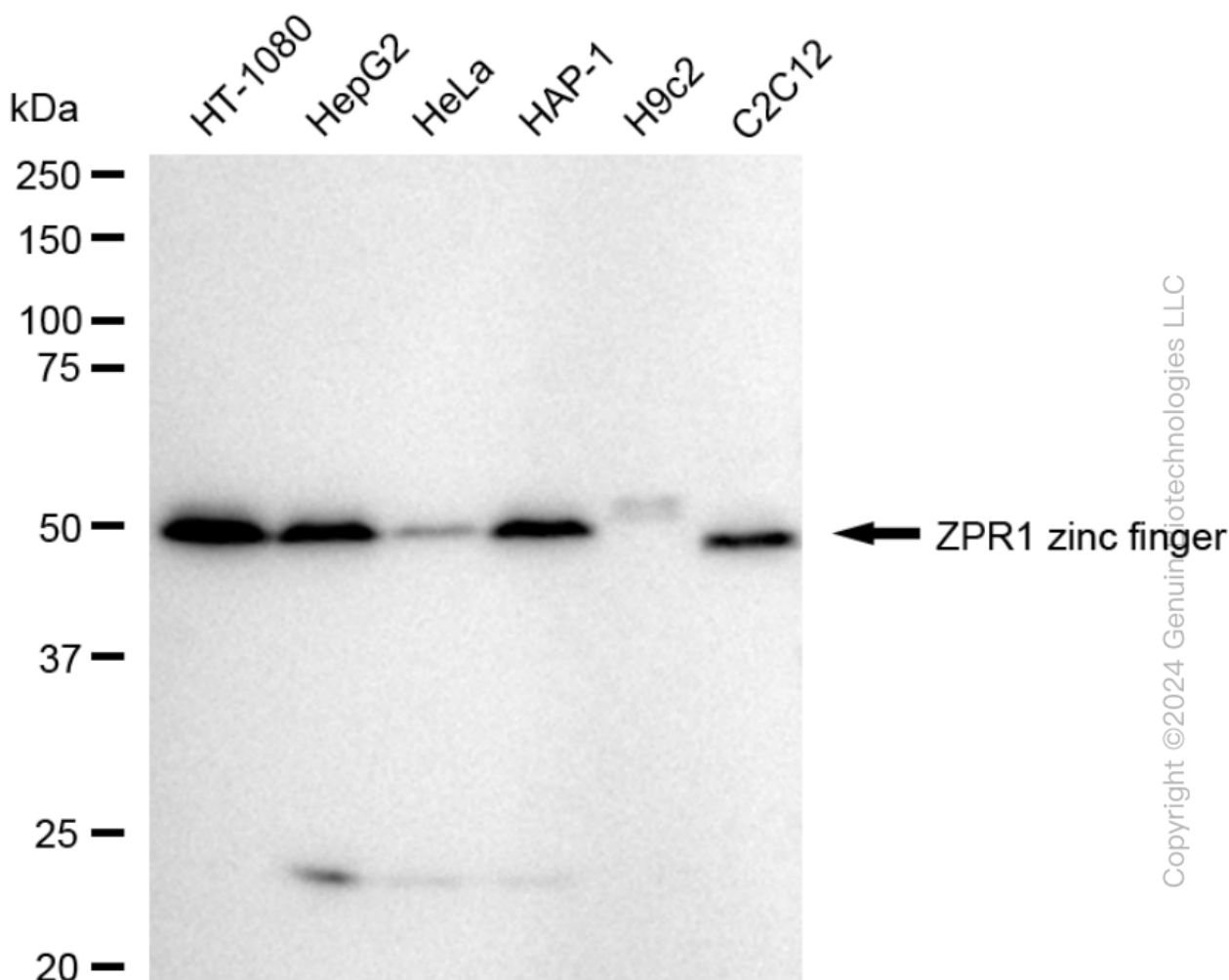
SALES@GENUINBIOTECH.COM
FAX: +1-540-855-7041

WWW.GENUINBIOTECH.COM

KD-Validated Anti-ZPR1 Zinc Finger Recombinant Rabbit Monoclonal Antibody

PAGE 3

Immunocytochemical staining of HepG2 cells with anti-ZPR1 zinc finger antibody (Cat#62800, 1:1,000). Nuclei were stained blue with DAPI; ZPR1 zinc finger was stained magenta with Alexa Fluor® 647. Images were taken using Leica stellaris 5. Protein abundance based on laser Intensity and smart gain: Medium. Scale bar: 20 μ m.



Western blotting analysis using anti-ZPR1 zinc finger antibody (Cat#62800). Total cell lysates (30 μ g) from various cell lines were loaded and separated by SDS-PAGE. The blot was incubated with anti-ZPR1 zinc finger antibody (Cat#62800, 1:5,000) and HRP-conjugated goat anti-rabbit secondary antibody (Cat#201, 1:20,000) respectively. Image was developed using FeQ™ ECL Substrate Kit (Cat#226).

SUPPORT

SUPPORT@GENUINBIOTECH.COM
TEL: +1-540-855-7041

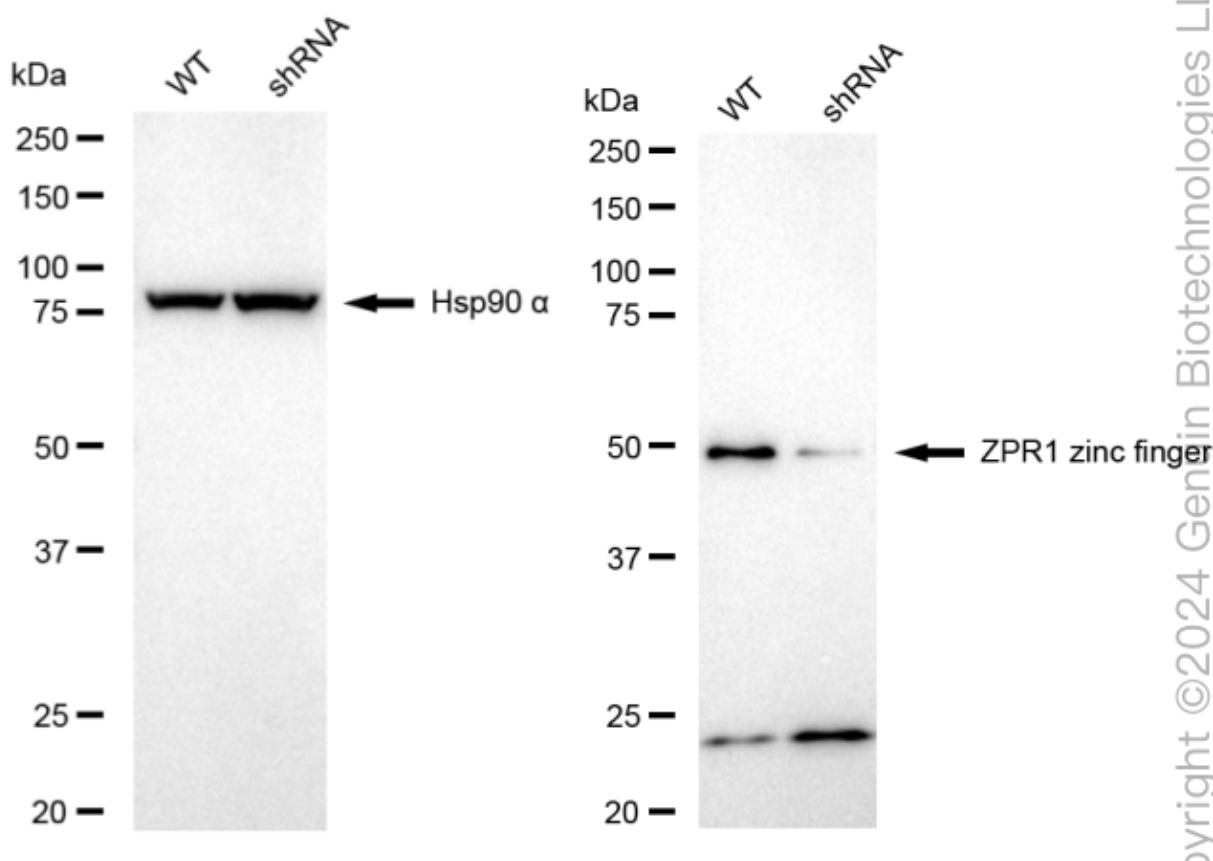
ORDERS

SALES@GENUINBIOTECH.COM
FAX: +1-540-855-7041

WWW.GENUINBIOTECH.COM

KD-Validated Anti-ZPR1 Zinc Finger Recombinant Rabbit Monoclonal Antibody

PAGE 4



Western blotting analysis using anti-ZPR1 zinc finger antibody (Cat#62800). ZPR1 zinc finger expression in wild-type (WT) and ZPR1 zinc finger (ZPR1) shRNA knockdown (KD) HeLa cells with 30 μ g of total cell lysates. Hsp90 α serves as a loading control. The blot was incubated with anti-ZPR1 zinc finger antibody (Cat#62800, 1:5,000) and HRP-conjugated goat anti-rabbit secondary antibody (Cat#201, 1:20,000) respectively. Image was developed using NaQ™ ECL Substrate Kit (Cat#716).

SUPPORT

SUPPORT@GENUINBIOTECH.COM
TEL: +1-540-855-7041

ORDERS

SALES@GENUINBIOTECH.COM
FAX: +1-540-855-7041

WWW.GENUINBIOTECH.COM