

KD-Validated Anti-USO1 Vesicle Transport Factor Recombinant Rabbit Monoclonal



Catalog #: 62803

Aliases

USO1; USO1 Vesicle Transport Factor; TAP; VDP; P115; General Vesicular Transport Factor P115; Transcytosis Associated Protein; USO1 Homolog, Vesicle Docking Protein (Yeast); USO1 Vesicle Docking Protein Homolog (Yeast); USO1 Vesicle Docking Protein Homolog; Transcytosis-Associated Protein; Vesicle Docking Protein P115; Vesicle Docking Protein; Vesicle-Docking Protein; Protein USO1 Homolog

Background

Gene Name: USO1

NCBI Gene Entry: [8615](#)

UniProt Entry: [O60763](#)

Application Information

Molecular Weight: Predicted, 108 kDa, observed, 108 kDa

Clonality: Rabbit monoclonal antibody

Clone ID: 24GB1905

Species Reactivity: Human, mouse, rat

Applications Tested: Western blotting (WB), flow cytometry (FCM), immunocytochemistry (IC)

Immunogen

A synthesized peptide derived from human USO1

Isotype

Rabbit IgG

Storage Buffer

Supplied in PBS (pH 7.4) containing 50% glycerol, and 0.02% sodium azide.

Storage

Store at -20 °C for one year.

Recommended Dilutions

Western Blotting (WB): 1:1,000-1:5,000

Flow Cytometry (FCM): 1:2,000

Immunocytochemistry (IC): 1:100-1:1,000

SUPPORT

SUPPORT@GENUINBIOTECH.COM
TEL: +1-540-855-7041

ORDERS

SALES@GENUINBIOTECH.COM
FAX: +1-540-855-7041

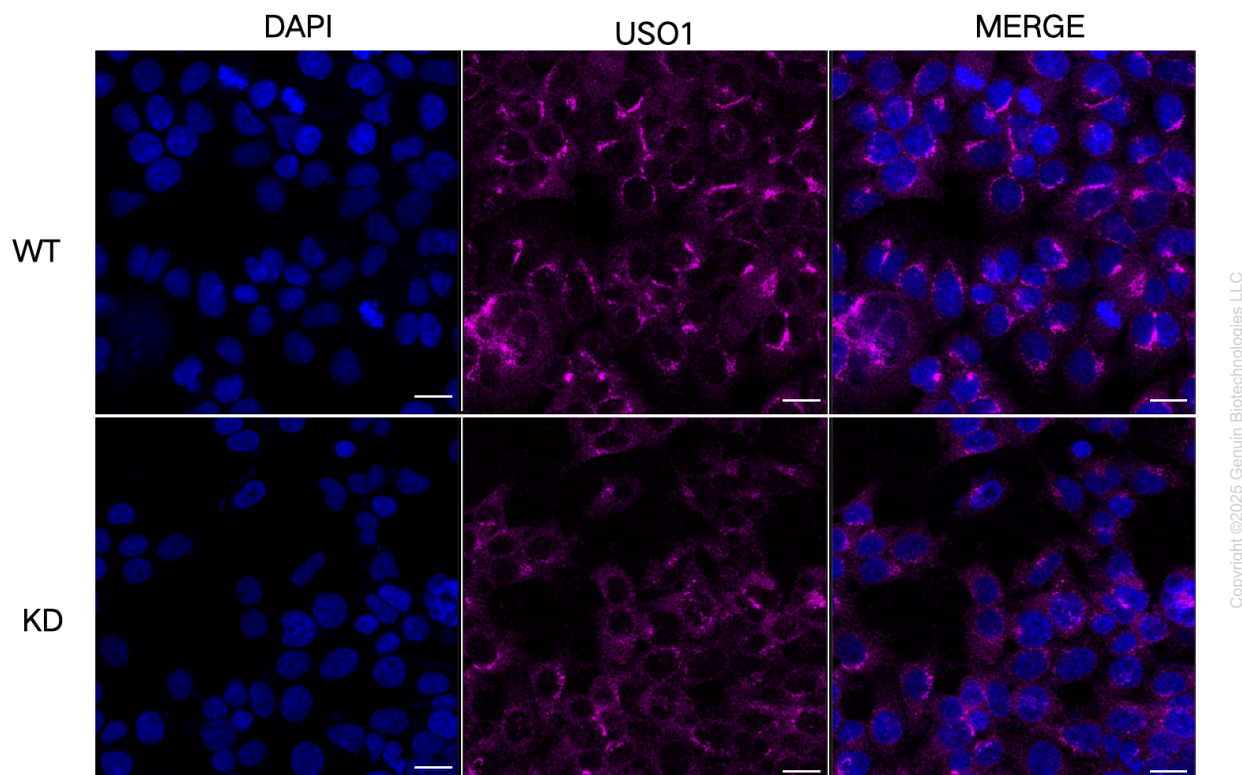
WWW.GENUINBIOTECH.COM

KD-Validated Anti-USO1 Vesicle Transport Factor Recombinant Rabbit Monoclonal

PAGE 2

Note: This product is for research use only.

Validation Data



Immunocytochemical staining of HeLa cells using anti-USO1 antibody (Cat#62803, 1:1,000), Top panel: wild-type (WT); Bottom panel: USO1 shRNA knockdown (KD). Nuclei were stained blue with DAPI; Acyl-CoA dehydrogenase short chain was stained magenta with Alexa Fluor® 647. Scale bar, 20 μ m.

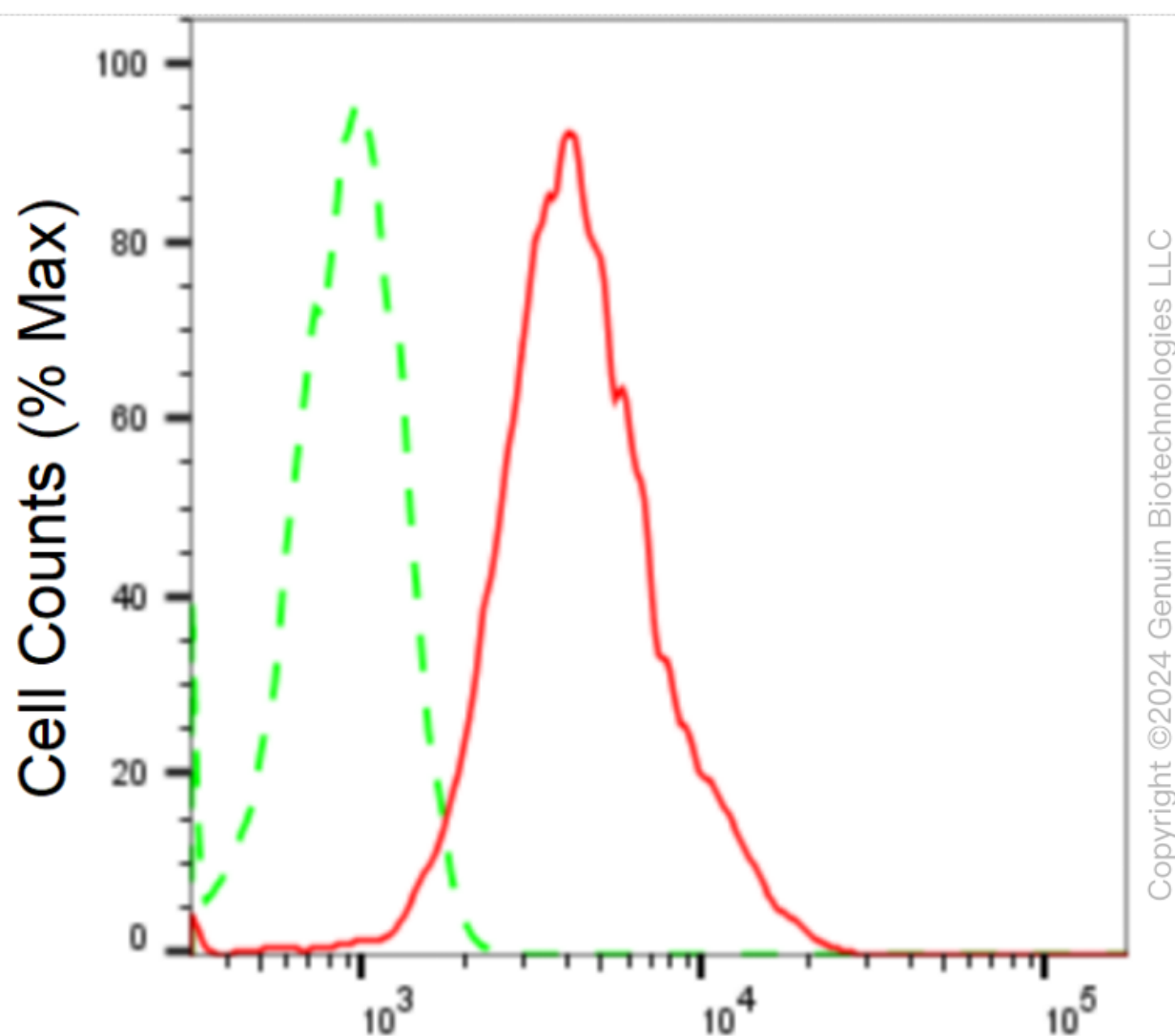
SUPPORT

SUPPORT@GENUINBIOTECH.COM
TEL: +1-540-855-7041

ORDERS

SALES@GENUINBIOTECH.COM
FAX: +1-540-855-7041

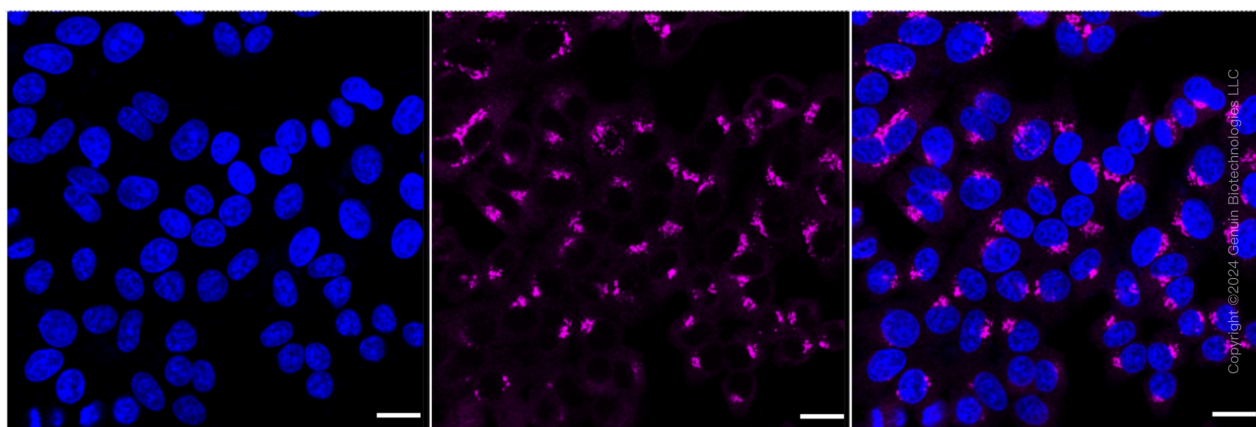
WWW.GENUINBIOTECH.COM



Copyright ©2024 Genuin Biotechnologies LLC

USO1-Alexa Fluor® 647

Flow cytometric analysis of USO1 expression in HepG2 cells using anti-USO1 antibody (Cat#62803, 1:2,000). Green, isotype control; red, USO1.



Copyright ©2024 Genuin Biotechnologies LLC

SUPPORT

SUPPORT@GENUINBIOTECH.COM
TEL: +1-540-855-7041

ORDERS

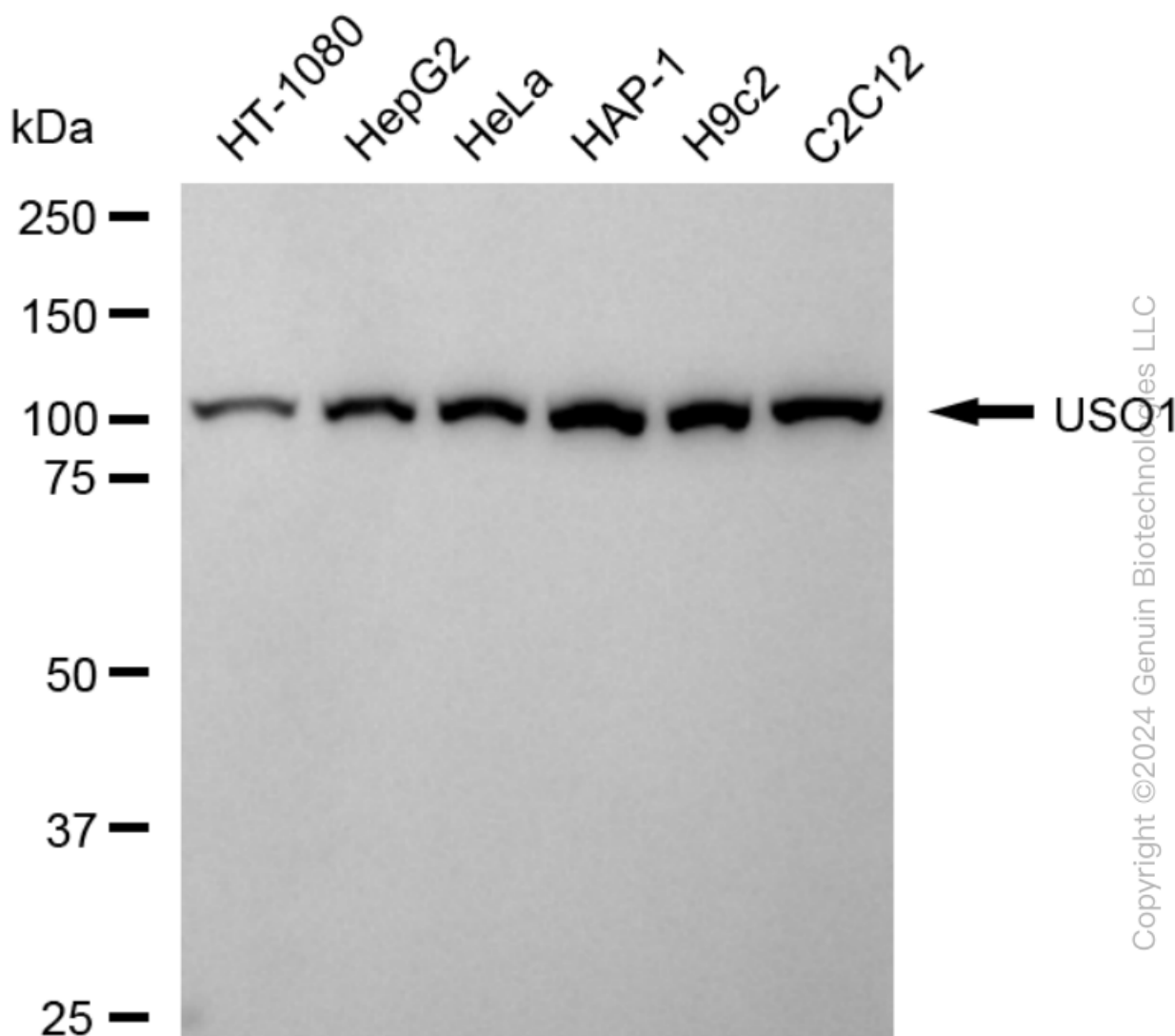
SALES@GENUINBIOTECH.COM
FAX: +1-540-855-7041

WWW.GENUINBIOTECH.COM

KD-Validated Anti-USO1 Vesicle Transport Factor Recombinant Rabbit Monoclonal

PAGE 4

Immunocytochemical staining of HepG2 cells with anti-USO1 antibody (Cat#62803, 1:1,000). Nuclei were stained blue with DAPI; USO1 was stained magenta with Alexa Fluor® 647. Images were taken using Leica stellaris 5. Protein abundance based on laser Intensity and smart gain: High. Scale bar: 20 μ m.



Western blotting analysis using anti-USO1 antibody (Cat#62803). Total cell lysates (30 μ g) from various cell lines were loaded and separated by SDS-PAGE. The blot was incubated with anti-USO1 antibody (Cat#62803, 1:5,000) and HRP-conjugated goat anti-rabbit secondary antibody (Cat#201, 1:20,000) respectively. Image was developed using FeQ™ ECL Substrate Kit (Cat#226).

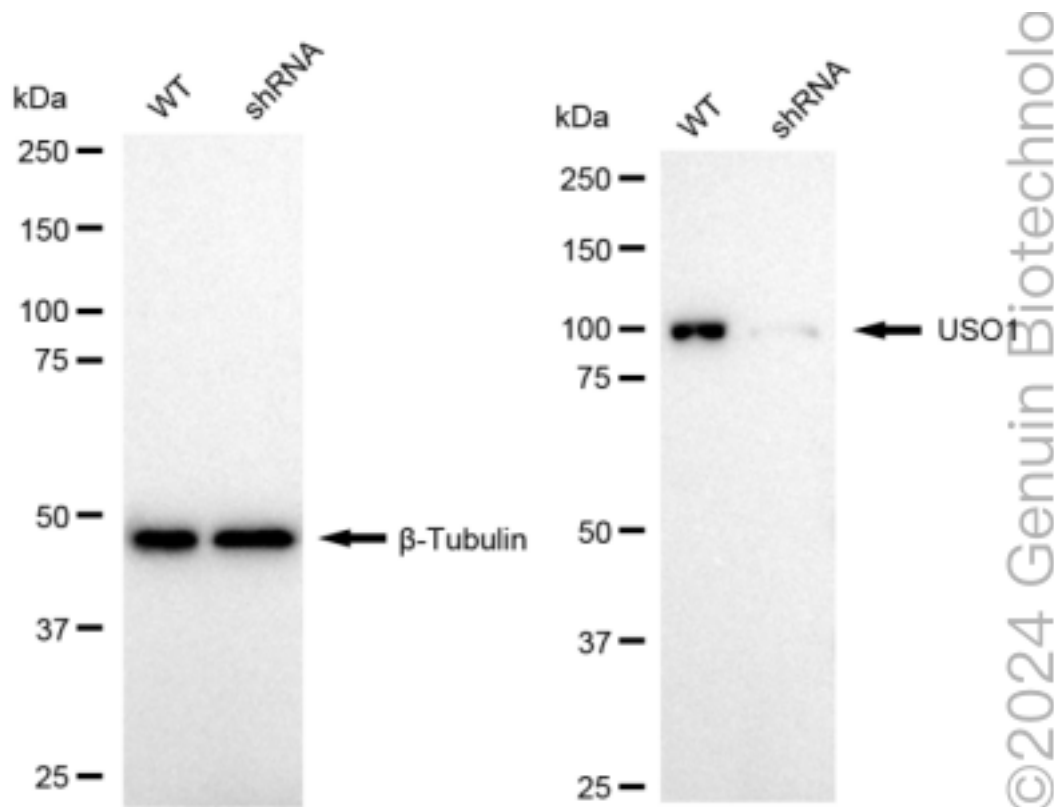
SUPPORT

SUPPORT@GENUINBIOTECH.COM
TEL: +1-540-855-7041

ORDERS

SALES@GENUINBIOTECH.COM
FAX: +1-540-855-7041

WWW.GENUINBIOTECH.COM



Western blotting analysis using anti-USO1 antibody (Cat#62803). USO1 expression in wild type (WT) and USO1 shRNA knockdown (KD) HeLa cells with 20 µg of total cell lysates. β-Tubulin serves as a loading control. The blot was incubated with anti-USO1 antibody (Cat#62803, 1:5,000) and HRP-conjugated goat anti-rabbit secondary antibody (Cat#201, 1:20,000) respectively. Image was developed using NaQ™ ECL Substrate Kit (Cat#716).