

# KD-Validated Anti-Sonic Hedgehog Signaling Molecule Recombinant Rabbit Monoclonal



**Catalog #: 62804**

## Aliases

SHH; Sonic Hedgehog Signaling Molecule; MCOPCB5; SMMCI; TPTPS; HHG1; TPT; Shh Unprocessed N-Terminal Signaling And C-Terminal Autoprocessing Domains; Sonic Hedgehog Protein; ShhNC; HLP3; HPE3; Sonic Hedgehog (Drosophila) Homolog; Sonic Hedgehog Homolog; EC 3.1.-.-; HHG-1

## Background

Gene Name: SHH

NCBI Gene Entry: [6469](#)

UniProt Entry: [Q15465](#)

## Application Information

Molecular Weight: Predicted, 50 kDa, observed, 51 kDa

Clonality: Rabbit monoclonal antibody

Clone ID: 24GB1925

Species Reactivity: Human

Applications Tested: Western blotting (WB), flow cytometry (FCM), immunocytochemistry (IC)

## Immunogen

A synthesized peptide derived from human Sonic Hedgehog

## Isotype

Rabbit IgG

## Storage Buffer

Supplied in PBS (pH 7.4) containing 50% glycerol, and 0.02% sodium azide.

## Storage

Store at -20 °C for one year.

## Recommended Dilutions

Western Blotting (WB): 1:1,000-1:5,000

Flow Cytometry (FCM): 1:2,000

Immunocytochemistry (IC): 1:100-1:1,000

---

### SUPPORT

SUPPORT@GENUINBIOTECH.COM  
TEL: +1-540-855-7041

### ORDERS

SALES@GENUINBIOTECH.COM  
FAX: +1-540-855-7041

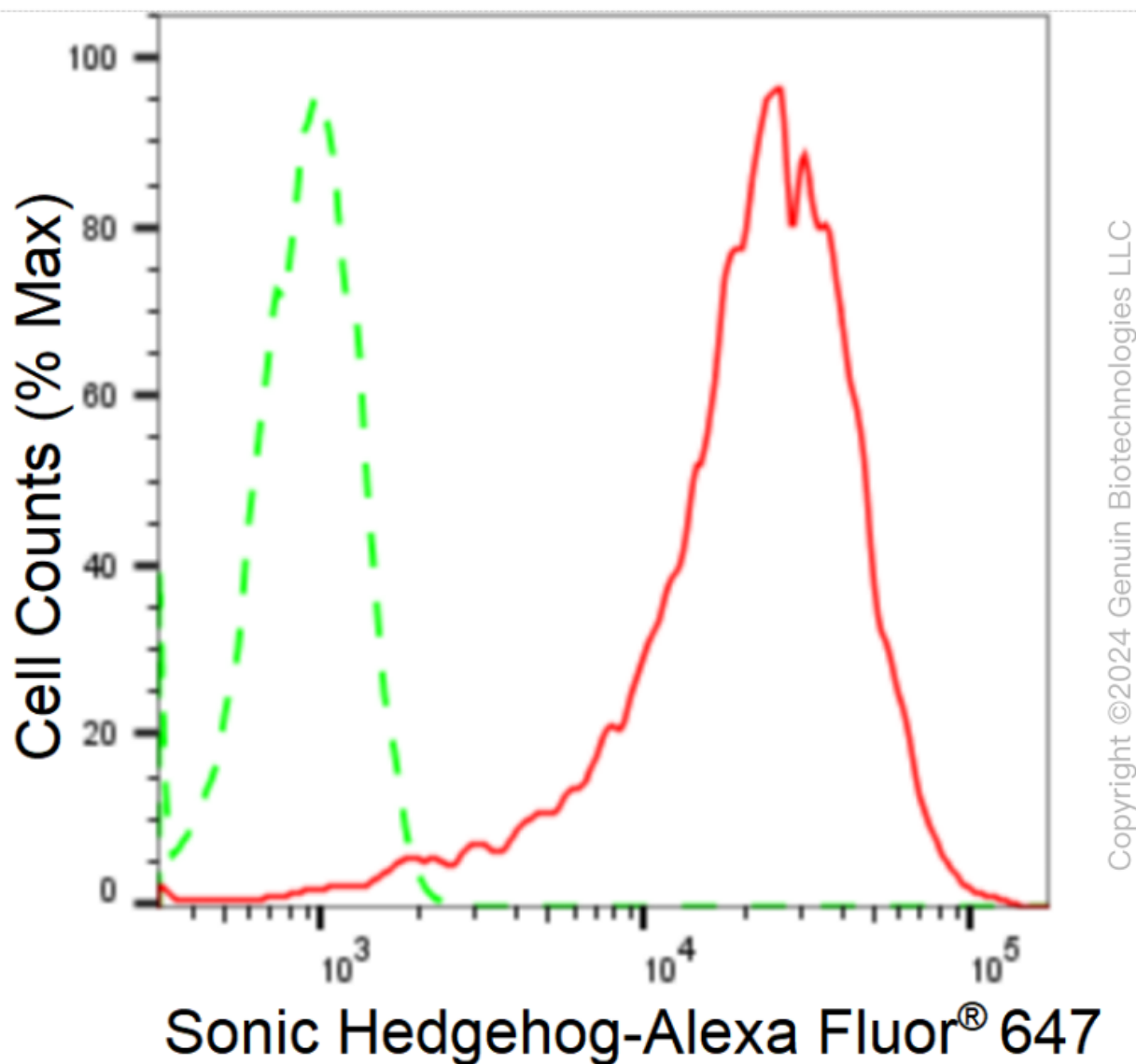
[WWW.GENUINBIOTECH.COM](http://WWW.GENUINBIOTECH.COM)

# KD-Validated Anti-Sonic Hedgehog Signaling Molecule Recombinant Rabbit Monoclonal

PAGE 2

**Note:** This product is for research use only.

## Validation Data



Flow cytometric analysis of Sonic Hedgehog expression in HepG2 cells using anti-Sonic Hedgehog antibody (Cat#62804, 1:2,000). Green, isotype control; red, Sonic Hedgehog.

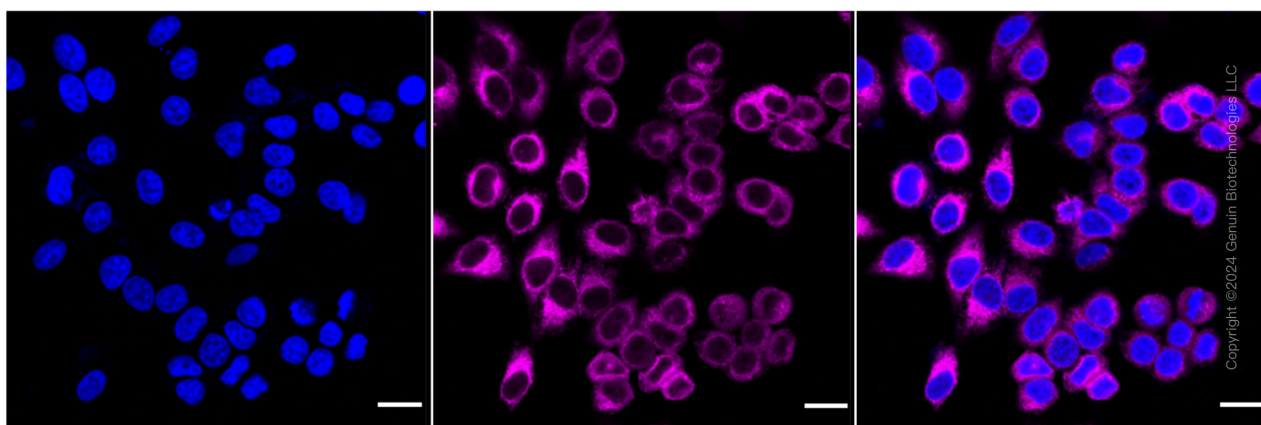
### SUPPORT

SUPPORT@GENUINBIOTECH.COM  
TEL: +1-540-855-7041

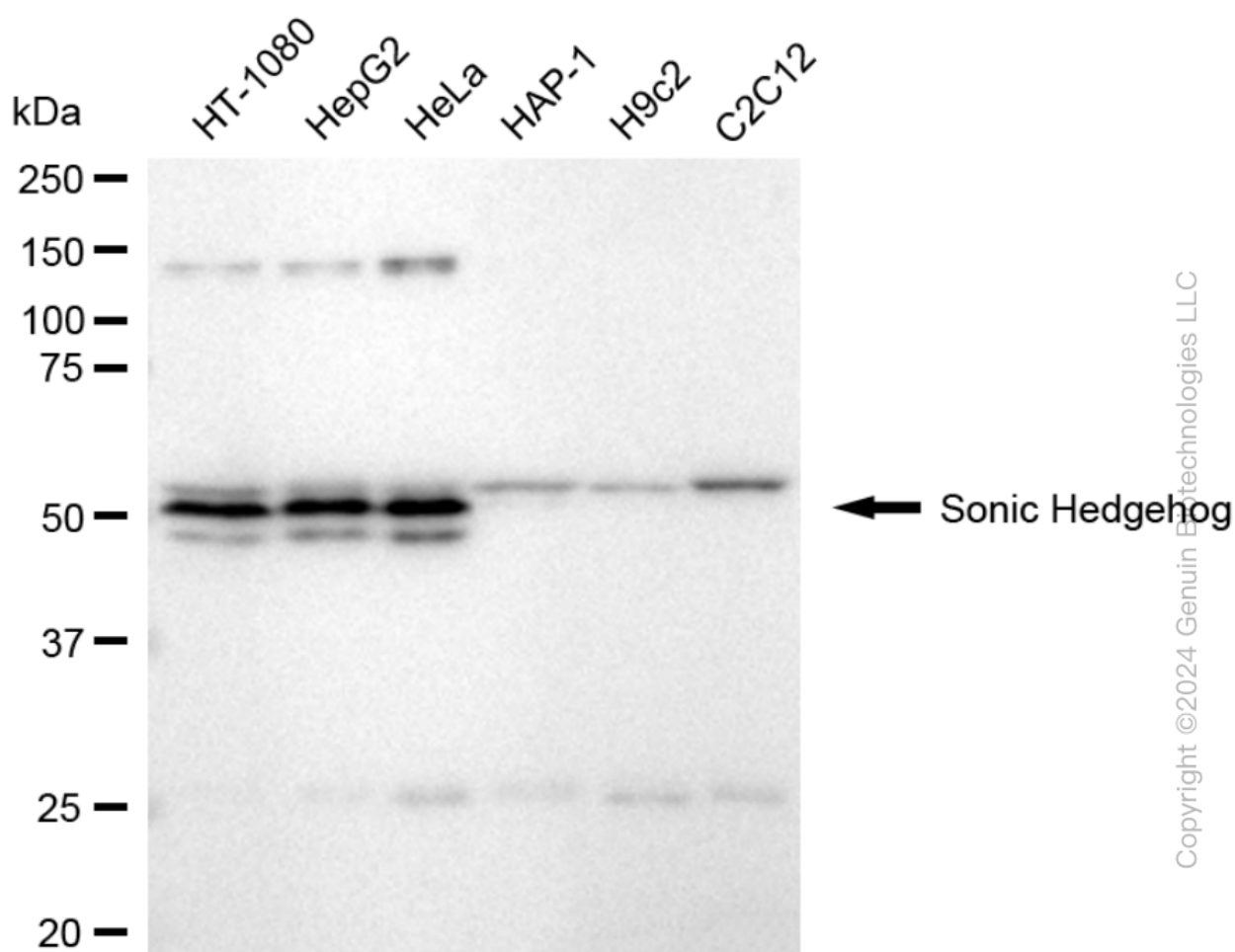
### ORDERS

SALES@GENUINBIOTECH.COM  
FAX: +1-540-855-7041

[WWW.GENUINBIOTECH.COM](http://WWW.GENUINBIOTECH.COM)



Immunocytochemical staining of HepG2 cells with anti-Sonic Hedgehog antibody (Cat#62804, 1:1,000). Nuclei were stained blue with DAPI; Sonic Hedgehog was stained magenta with Alexa Fluor® 647. Images were taken using Leica stellaris 5. Protein abundance based on laser Intensity and smart gain: High. Scale bar: 20  $\mu$ m.

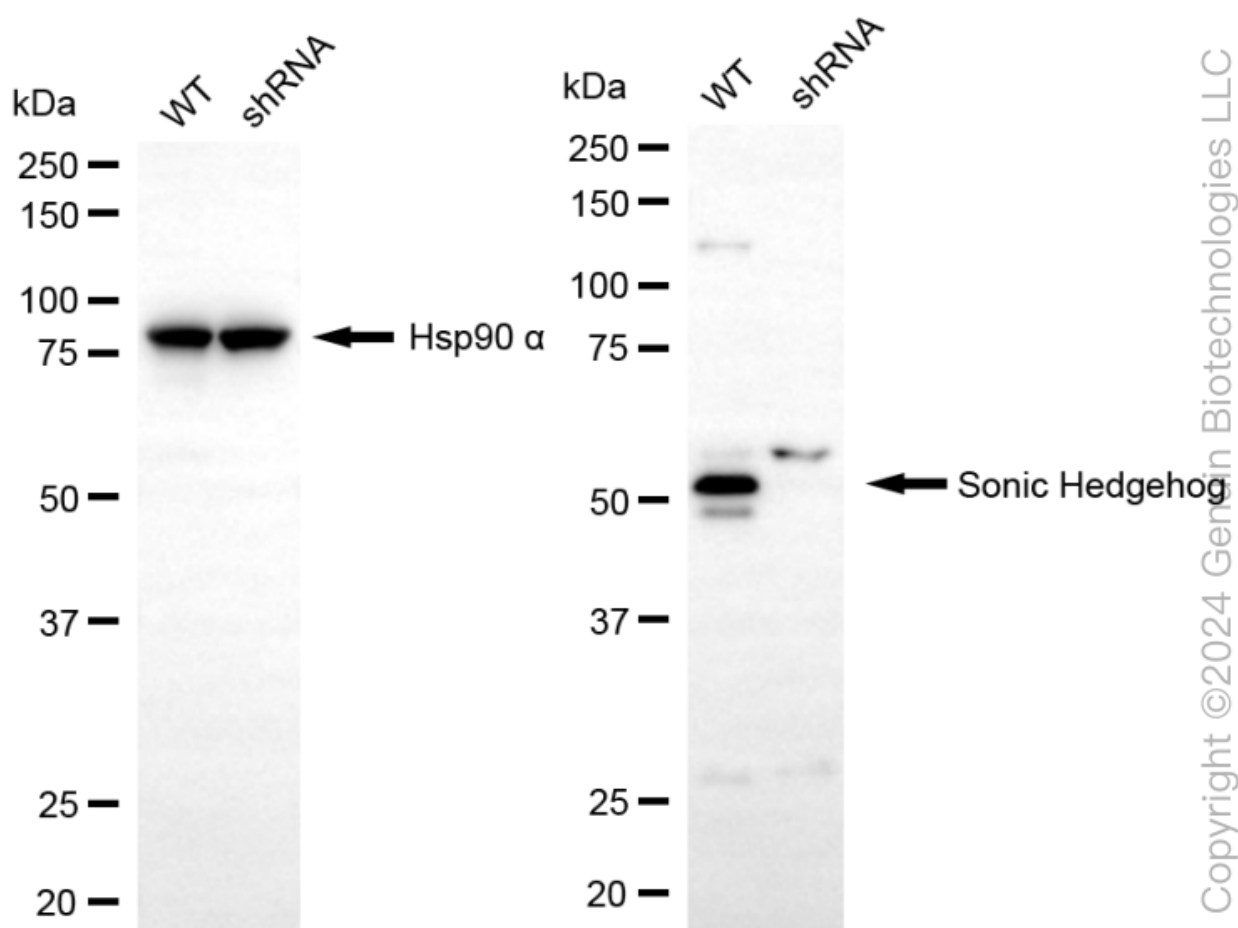


Western blotting analysis using anti-sonic hedgehog antibody (Cat#62804). Total cell lysates (30  $\mu$ g) from various cell lines were loaded and separated by SDS-PAGE. The blot was incubated with

## KD-Validated Anti-Sonic Hedgehog Signaling Molecule Recombinant Rabbit Monoclonal

PAGE 4

anti-sonic hedgehog antibody (Cat#62804, 1:5,000) and HRP-conjugated goat anti-rabbit secondary antibody (Cat#201, 1:20,000) respectively. Image was developed using FeQ™ ECL Substrate Kit (Cat#226).



Western blotting analysis using anti-sonic hedgehog antibody (Cat#62804). sonic hedgehog expression in wild-type (WT) and SHH shRNA knockdown (KD) HeLa cells with 30  $\mu$ g of total cell lysates. Hsp90  $\alpha$  serves as a loading control. The blot was incubated with anti-sonic hedgehog antibody (Cat#62804, 1:5,000) and HRP-conjugated goat anti-rabbit secondary antibody (Cat#201, 1:20,000) respectively. Image was developed using NaQ™ ECL Substrate Kit (Cat#716). SHH, sonic hedgehog signaling molecule.

### SUPPORT

SUPPORT@GENUINBIOTECH.COM  
TEL: +1-540-855-7041

### ORDERS

SALES@GENUINBIOTECH.COM  
FAX: +1-540-855-7041

WWW.GENUINBIOTECH.COM