

KD-Validated Anti-TATA Element Modulatory Factor 1 Recombinant Rabbit Monoclonal



Catalog #: 62805

Aliases

TMF1; TATA Element Modulatory Factor 1; ARA160; TMF; Androgen Receptor-Associated Protein Of 160 KDa; Androgen Receptor Coactivator 160 KDa Protein; TATA Element Modulatory Factor

Background

Gene Name: TMF1

NCBI Gene Entry: [7110](#)

UniProt Entry: [P82094](#)

Application Information

Molecular Weight: Predicted, 123 kDa, observed, 150 kDa

Clonality: Rabbit monoclonal antibody

Clone ID: 24GB1965

Species Reactivity: Human

Applications Tested: Western blotting (WB), flow cytometry (FCM), immunocytochemistry (IC)

Immunogen

A synthesized peptide derived from human TMF

Isotype

Rabbit IgG

Storage Buffer

Supplied in PBS (pH 7.4) containing 50% glycerol, and 0.02% sodium azide.

Storage

Store at -20 °C for one year.

Recommended Dilutions

Western Blotting (WB): 1:1,000-1:5,000

Flow Cytometry (FCM): 1:2,000

Immunocytochemistry (IC): 1:100-1:1,000

Note: This product is for research use only.

SUPPORT

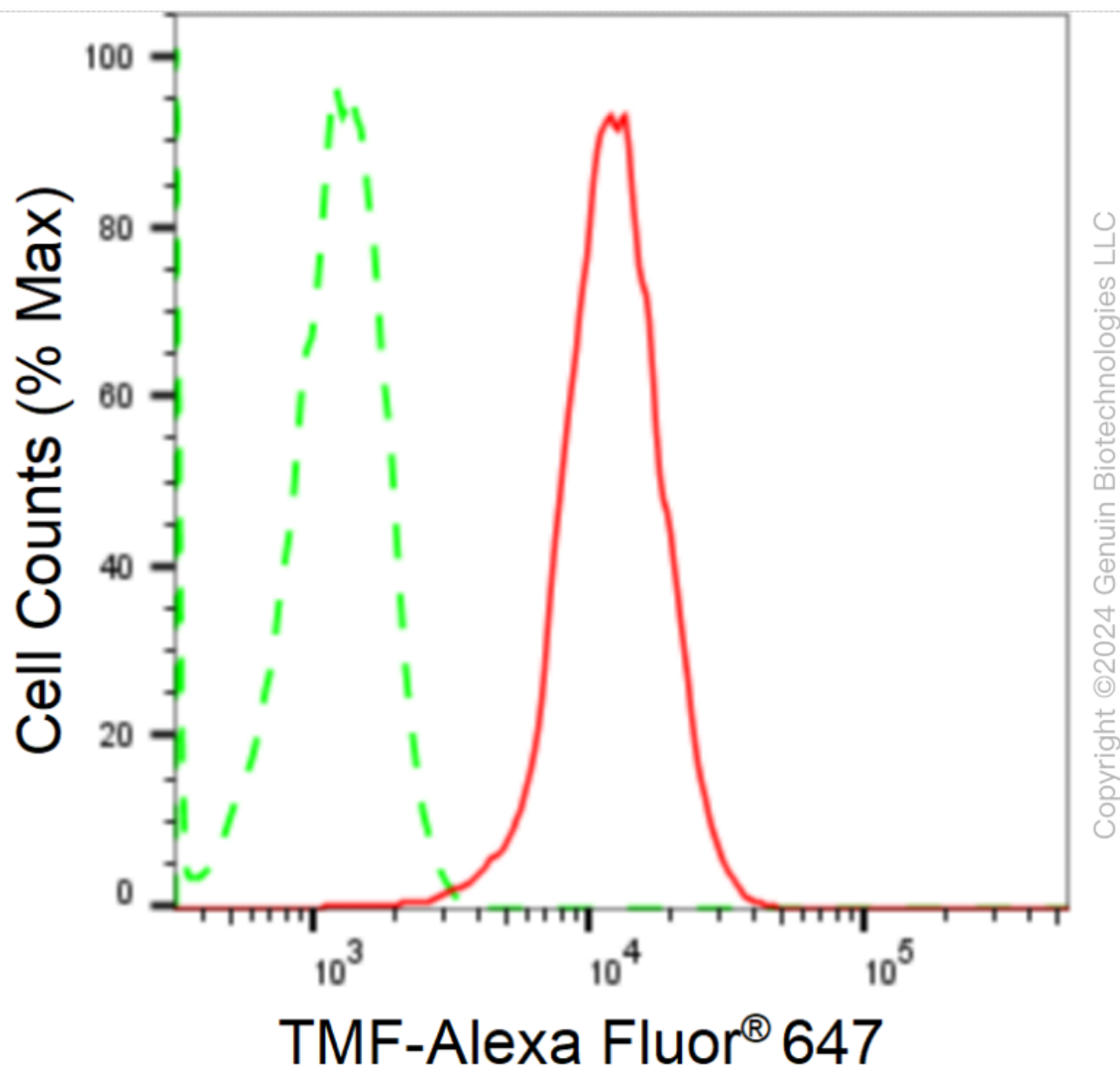
SUPPORT@GENUINBIOTECH.COM
TEL: +1-540-855-7041

ORDERS

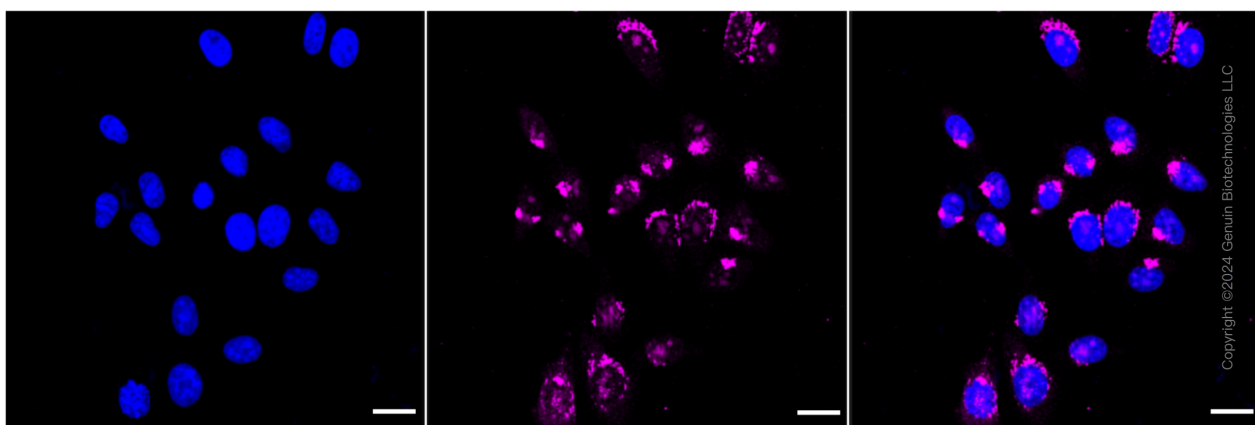
SALES@GENUINBIOTECH.COM
FAX: +1-540-855-7041

WWW.GENUINBIOTECH.COM

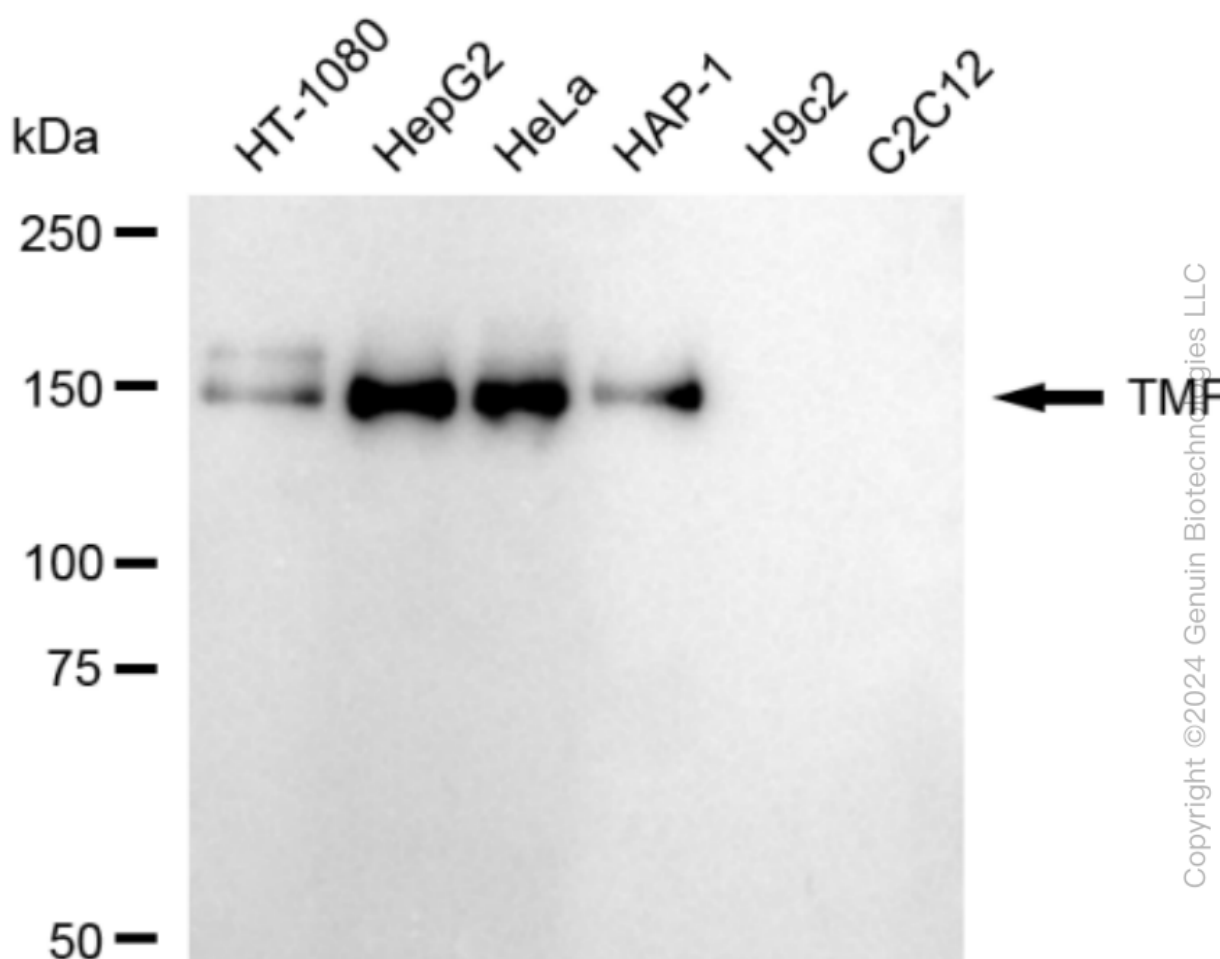
Validation Data



Flow cytometric analysis of TMF expression in HepG2 cells using anti-TMF antibody (Cat#62805, 1:2,000). Green, isotype control; red, TMF.



Immunocytochemical staining of HepG2 cells with anti-TMF antibody (Cat#62805, 1:1,000). Nuclei were stained blue with DAPI; TMF was stained magenta with Alexa Fluor® 647. Images were taken using Leica stellaris 5. Protein abundance based on laser Intensity and smart gain: Medium. Scale bar: 20 μ m.

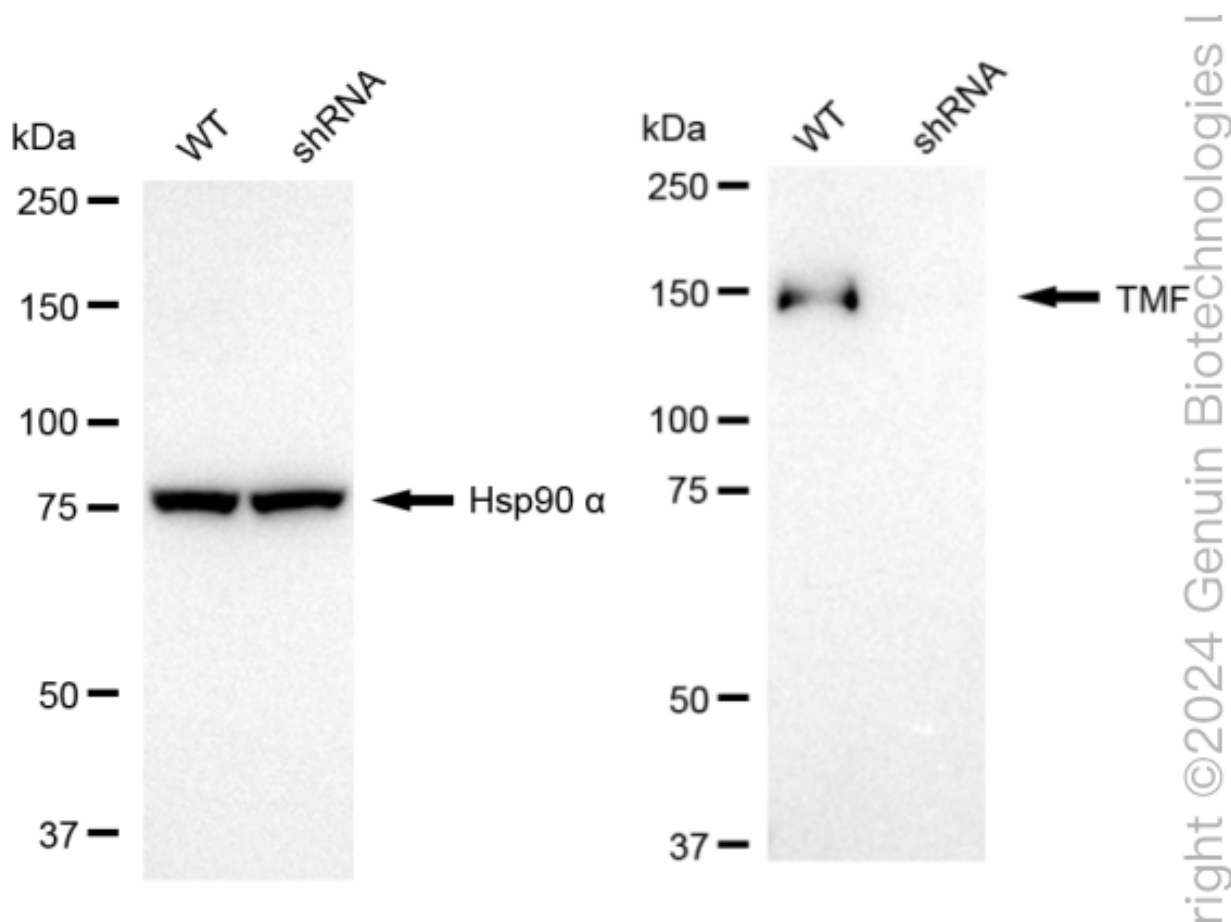


Western blotting analysis using anti-TMF antibody (Cat#62805). Total cell lysates (30 μ g) from various cell lines were loaded and separated by SDS-PAGE. The blot was incubated with anti-

KD-Validated Anti-TATA Element Modulatory Factor 1 Recombinant Rabbit Monoclonal

PAGE 4

TMF antibody (Cat#62805, 1:5,000) and HRP-conjugated goat anti-rabbit secondary antibody (Cat#201, 1:20,000) respectively. Image was developed using FeQ™ ECL Substrate Kit (Cat#226).



Western blotting analysis using anti-TMF antibody (Cat#62805). TMF expression in wild-type (WT) and TMF1 shRNA knockdown (KD) HeLa cells with 20 μ g of total cell lysates. Hsp90 α serves as a loading control. The blot was incubated with anti-TMF antibody (Cat#62805, 1:5,000) and HRP-conjugated goat anti-rabbit secondary antibody (Cat#201, 1:20,000) respectively. Image was developed using NaQ™ ECL Substrate Kit (Cat#716). TMF1, TATA element modulatory factor 1.

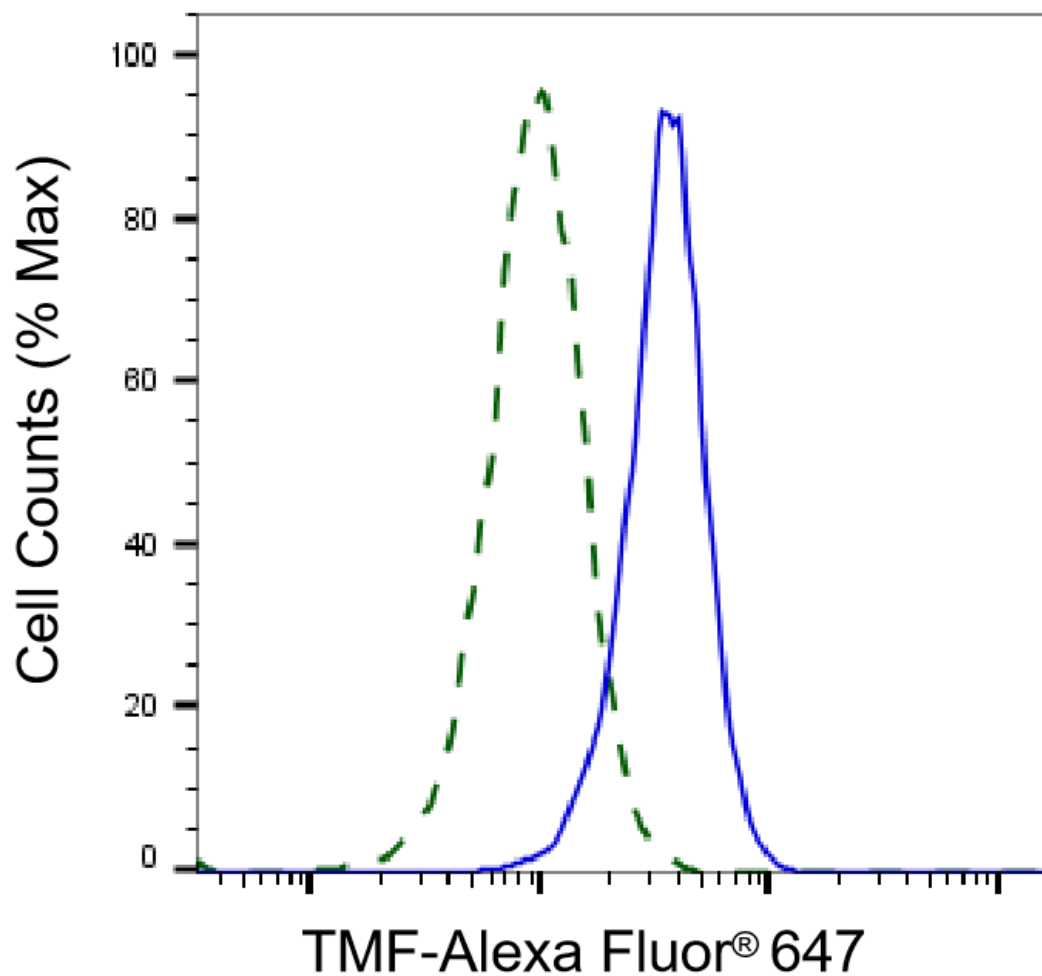
SUPPORT

SUPPORT@GENUINBIOTECH.COM
TEL: +1-540-855-7041

ORDERS

SALES@GENUINBIOTECH.COM
FAX: +1-540-855-7041

WWW.GENUINBIOTECH.COM



Copyright ©2025 Genuin Biotechnologies LLC

Validation of TMF knockdown using flow cytometry. Wild-type(WT, Blue) and knockdown(KD, Green) HeLa cells were stained with anti-TMF antibody (Cat#62805, 1:2,000) and analyzed using BD flow cytometer.