

KD-Validated Anti-VAMP Associated Protein A Recombinant Rabbit Monoclonal Antibody



Catalog #: 62817

Aliases

VAPA; VAMP Associated Protein A; VAP-A; HVAP-33; VAMP (Vesicle-Associated Membrane Protein)-Associated Protein A, 33kDa; Vesicle-Associated Membrane Protein-Associated Protein A; 33 KDa VAMP-Associated Protein; VAMP-A; VAP-33; VAP33; VAMP (Vesicle-Associated Membrane Protein)-Associated Protein A (33kD); Epididymis Secretory Sperm Binding Protein; VAMP-Associated Protein A

Background

Gene Name: VAPA

NCBI Gene Entry: [9218](#)

UniProt Entry: [Q9P0L0](#)

Application Information

Molecular Weight: Predicted, 28 kDa, observed, 28 kDa

Clonality: Rabbit monoclonal antibody

Clone ID: 24GB2580

Species Reactivity: Human, mouse, rat

Applications Tested: Western blotting (WB), flow cytometry (FCM), immunocytochemistry (IC)

Immunogen

A synthesized peptide derived from human VAPA

Isotype

Rabbit IgG

Storage Buffer

Supplied in PBS (pH 7.4) containing 50% glycerol, and 0.02% sodium azide.

Storage

Store at -20 °C for one year.

Recommended Dilutions

Western Blotting (WB): 1:1,000-1:5,000

Flow Cytometry (FCM): 1:2,000

Immunocytochemistry (IC): 1:100-1:1,000

SUPPORT

SUPPORT@GENUINBIOTECH.COM
TEL: +1-540-855-7041

ORDERS

SALES@GENUINBIOTECH.COM
FAX: +1-540-855-7041

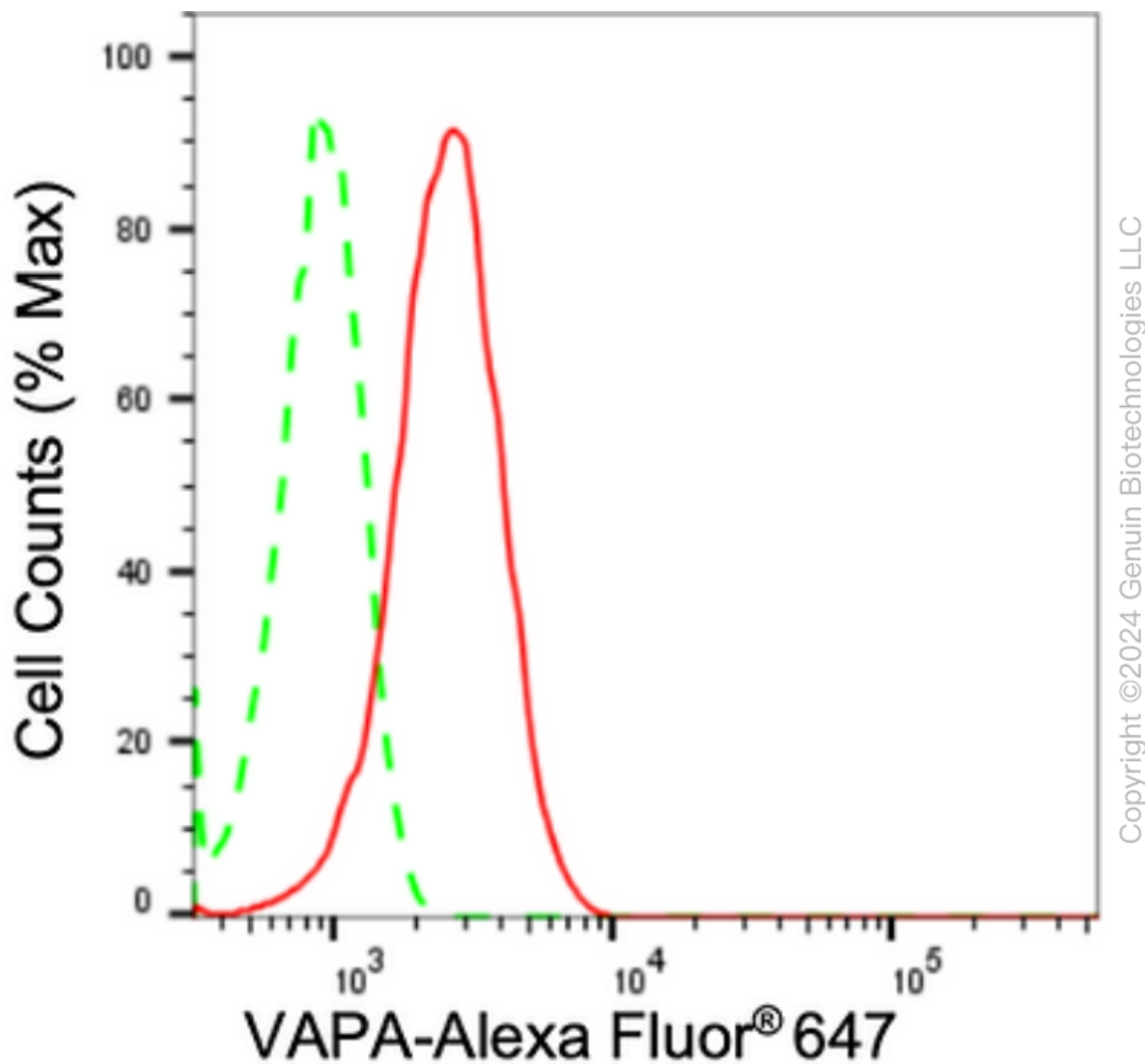
WWW.GENUINBIOTECH.COM

KD-Validated Anti-VAMP Associated Protein A Recombinant Rabbit Monoclonal Antibody

PAGE 2

Note: This product is for research use only.

Validation Data



Flow cytometric analysis of VAPA expression in HepG2 cells using anti-VAPA antibody (Cat#62817, 1:2,000). Green, isotype control; red, VAPA.

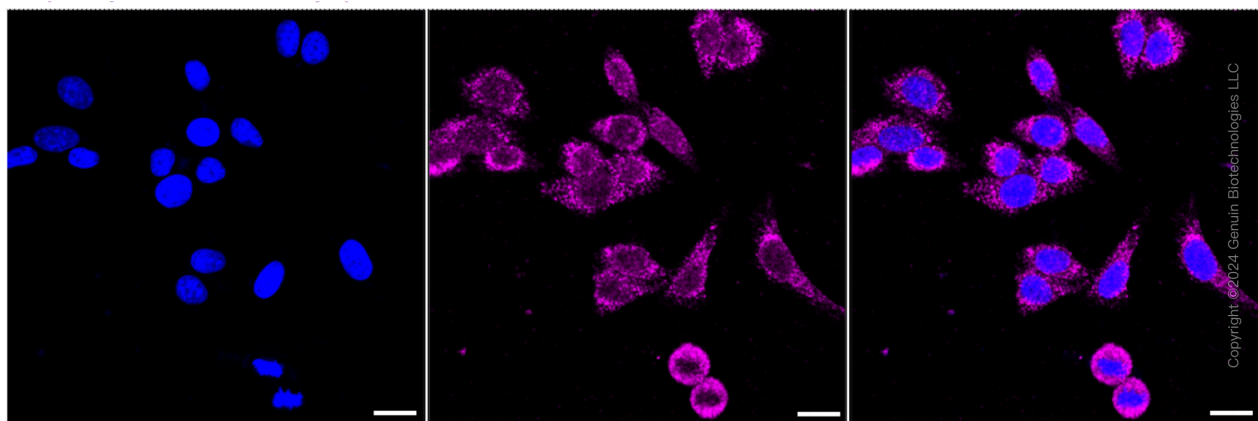
SUPPORT

SUPPORT@GENUINBIOTECH.COM
TEL: +1-540-855-7041

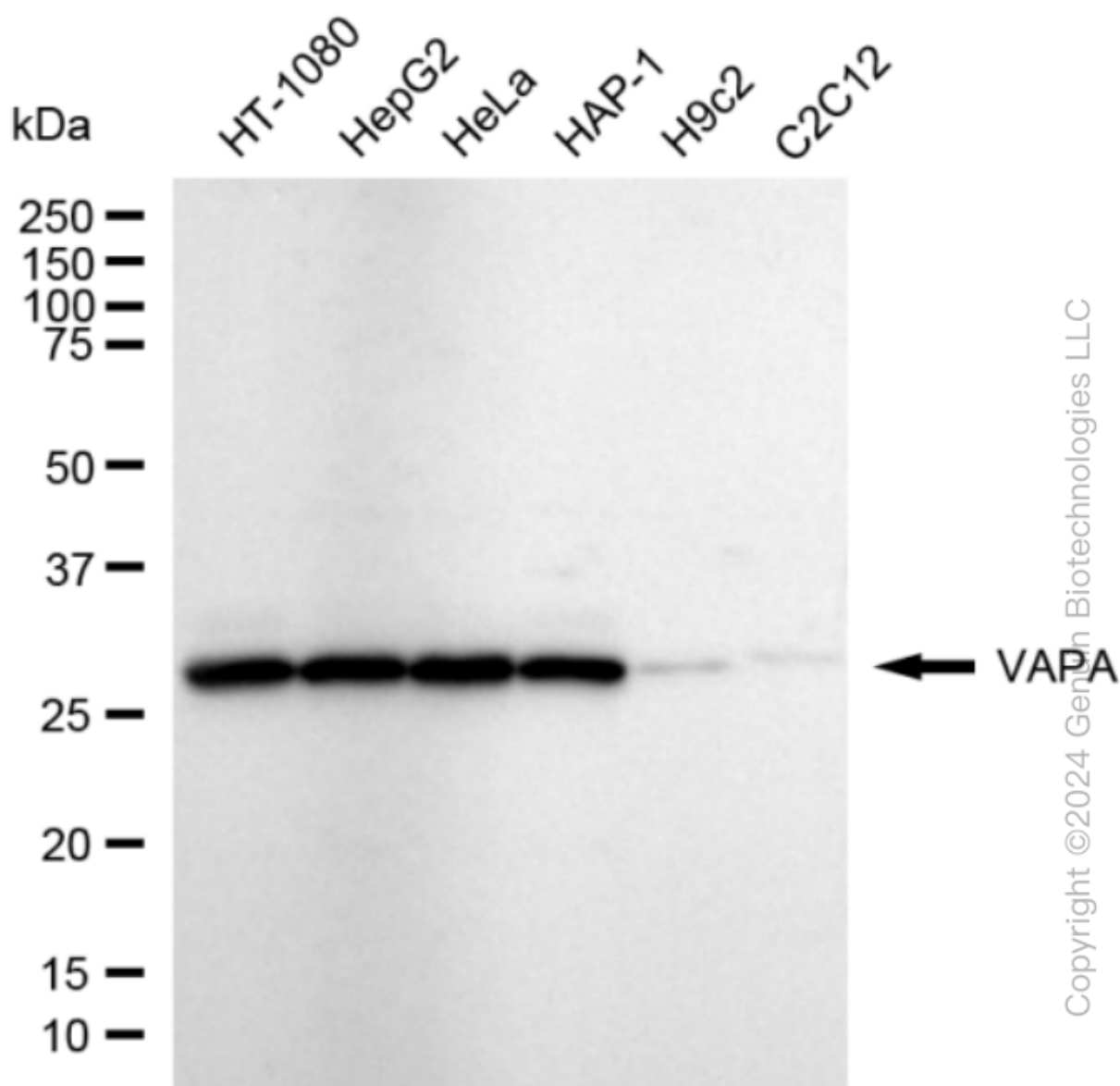
ORDERS

SALES@GENUINBIOTECH.COM
FAX: +1-540-855-7041

WWW.GENUINBIOTECH.COM



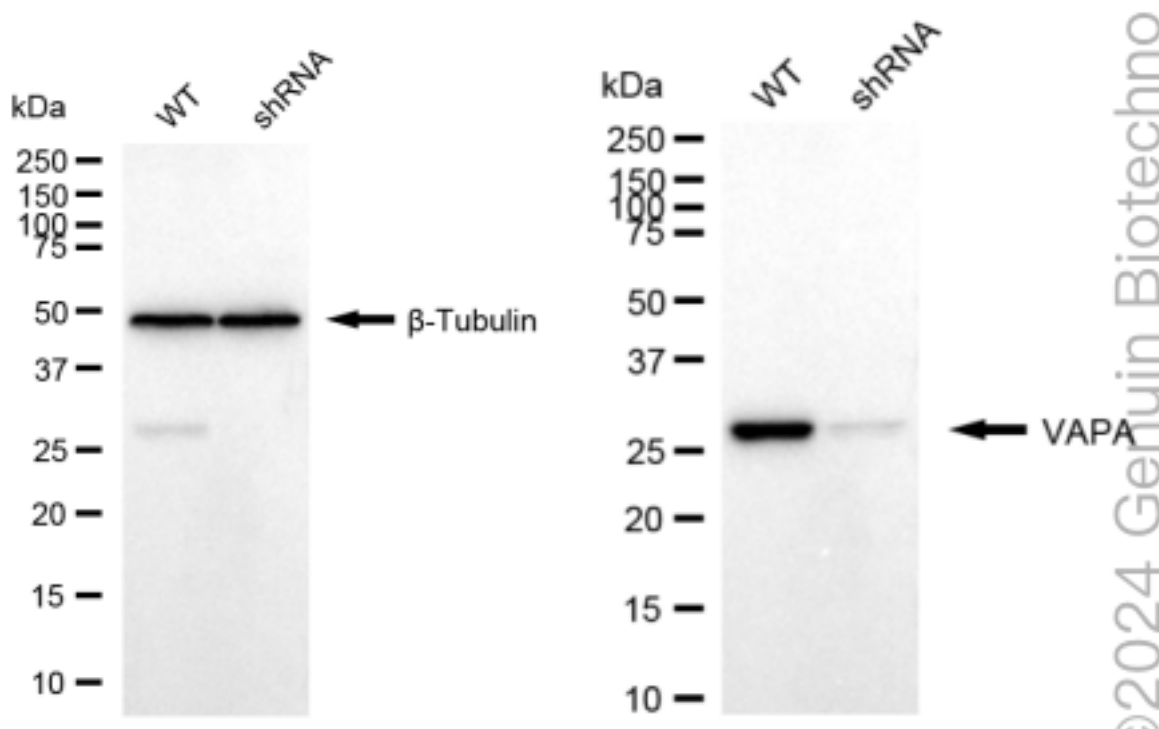
Immunocytochemical staining of HepG2 cells with anti-VAPA antibody (Cat#62817, 1:1,000). Nuclei were stained blue with DAPI; VAPA was stained magenta with Alexa Fluor® 647. Images were taken using Leica stellaris 5. Protein abundance based on laser Intensity and smart gain: Medium. Scale bar: 20 μ m.



Western blotting analysis using anti-VAPA antibody (Cat#62817). Total cell lysates (30 µg) from various cell lines were loaded and separated by SDS-PAGE. The blot was incubated with anti-VAPA antibody (Cat#62817, 1:5,000) and HRP-conjugated goat anti-rabbit secondary antibody (Cat#201, 1:20,000) respectively. Image was developed using FeQ™ ECL Substrate Kit (Cat#226).

KD-Validated Anti-VAMP Associated Protein A Recombinant Rabbit Monoclonal Antibody

PAGE 5



Western blotting analysis using anti-VAPA antibody (Cat#62817). VAPA expression in wild type (WT) and VAPA shRNA knockdown (KD) HeLa cells with 20 µg of total cell lysates. β-Tubulin serves as a loading control. The blot was incubated with anti-VAPA antibody (Cat#62817, 1:5,000) and HRP-conjugated goat anti-rabbit secondary antibody (Cat#201, 1:20,000) respectively. Image was developed using NaQ™ ECL Substrate Kit (Cat#716).

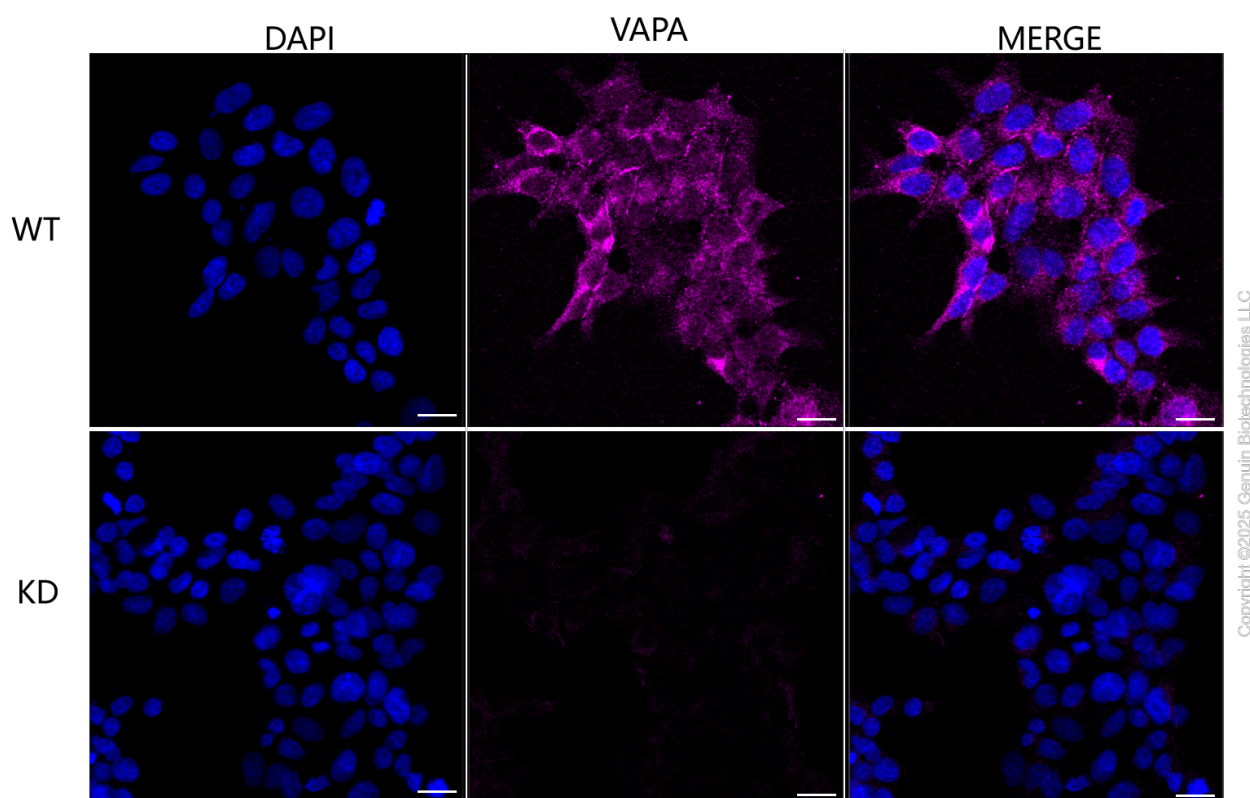
SUPPORT

SUPPORT@GENUINBIOTECH.COM
TEL: +1-540-855-7041

ORDERS

SALES@GENUINBIOTECH.COM
FAX: +1-540-855-7041

WWW.GENUINBIOTECH.COM



Immunocytochemical staining of HeLa cells using anti-VAPA antibody (Cat#62817, 1:1,000), Top panel: wild-type (WT); Bottom panel: VAPA shRNA knockdown (KD). Nuclei were stained blue with DAPI; VAPA was stained magenta with Alexa Fluor® 647. Scale bar, 20 μ m.