

# KD-Validated Anti-Transcription Factor Dp-1 Recombinant Rabbit Monoclonal Antibody



**Catalog #: 62819**

## Aliases

TFDP1; Transcription Factor Dp-1; DRTF1; DP1; Dp-1; DILC; Down-Regulated In Liver Cancer Stem Cells; E2F Dimerization Partner 1; DRTF1-Polypeptide 1; E2F-Related Transcription Factor

## Background

Gene Name: TFDP1

NCBI Gene Entry: [7027](#)

UniProt Entry: [Q14186](#)

## Application Information

Molecular Weight: Predicted, 45 kDa, observed, 49 kDa

Clonality: Rabbit monoclonal antibody

Clone ID: 24GB2685

Species Reactivity: Human, mouse, rat

Applications Tested: Western blotting (WB), flow cytometry (FCM), immunocytochemistry (IC)

## Immunogen

A synthesized peptide derived from human DP1

## Isotype

Rabbit IgG

## Storage Buffer

Supplied in PBS (pH 7.4) containing 50% glycerol, and 0.02% sodium azide.

## Storage

Store at -20 °C for one year.

## Recommended Dilutions

Western Blotting (WB): 1:1,000-1:5,000

Flow Cytometry (FCM): 1:2,000

Immunocytochemistry (IC): 1:100-1:1,000

**Note:** This product is for research use only.

## Validation Data

---

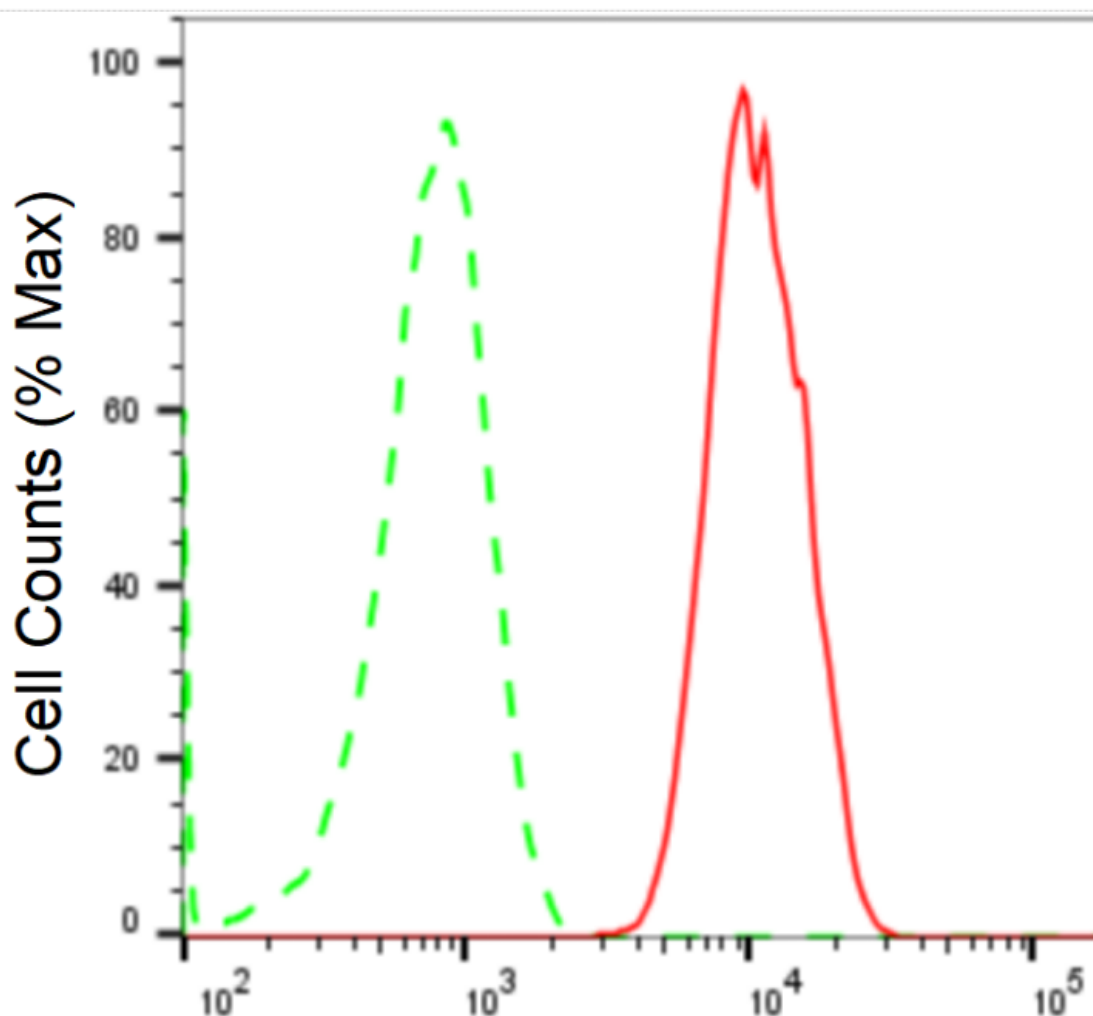
### SUPPORT

SUPPORT@GENUINBIOTECH.COM  
TEL: +1-540-855-7041

### ORDERS

SALES@GENUINBIOTECH.COM  
FAX: +1-540-855-7041

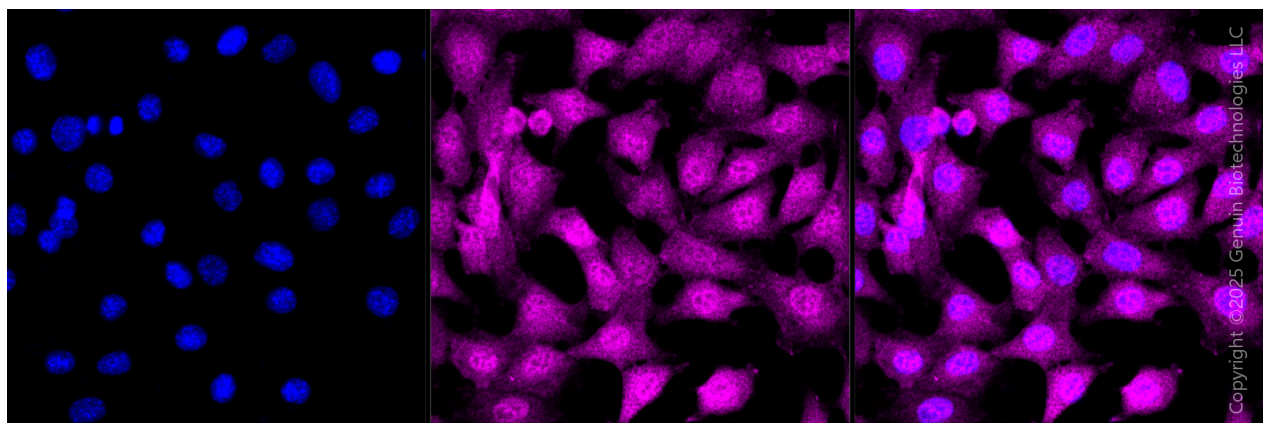
[WWW.GENUINBIOTECH.COM](http://WWW.GENUINBIOTECH.COM)



Copyright ©2024 Genuin Biotechnologies LLC

## transcription factor Dp-1-Alexa Fluor® 647

Flow cytometric analysis of transcription factor Dp-1 expression in C2C12 cells using anti-transcription factor Dp-1 antibody (Cat#62819, 1:2,000). Green, isotype control; red, transcription factor Dp-1.



Copyright ©2025 Genuin Biotechnologies LLC

### SUPPORT

SUPPORT@GENUINBIOTECH.COM  
TEL: +1-540-855-7041

### ORDERS

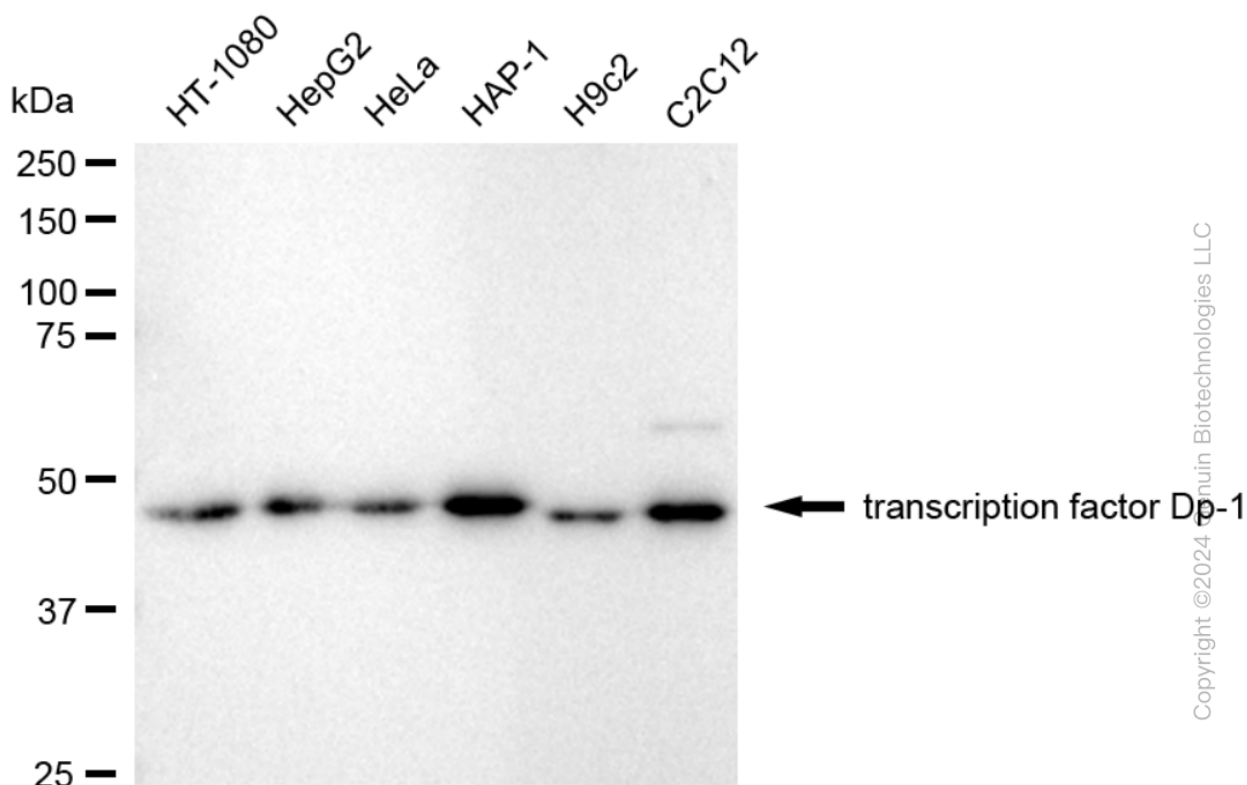
SALES@GENUINBIOTECH.COM  
FAX: +1-540-855-7041

WWW.GENUINBIOTECH.COM

## KD-Validated Anti-Transcription Factor Dp-1 Recombinant Rabbit Monoclonal Antibody

PAGE 3

Immunocytochemical staining of C2C12 cells with anti-Transcription factor Dp-1 antibody (Cat#62819, 1:1,000). Nuclei were stained blue with DAPI; Transcription factor Dp-1 was stained magenta with Alexa Fluor® 647. Images were taken using Leica stellaris 5. Protein abundance based on laser Intensity and smart gain: Medium. Scale bar, 20  $\mu$ m.



Western blotting analysis using anti-transcription factor Dp-1 antibody (Cat#62819). Total cell lysates (30  $\mu$ g) from various cell lines were loaded and separated by SDS-PAGE. The blot was incubated with anti-transcription factor Dp-1 antibody (Cat#62819, 1:5,000) and HRP-conjugated goat anti-rabbit secondary antibody (Cat#201, 1:20,000) respectively. Image was developed using FeQ™ ECL Substrate Kit (Cat#226).

### SUPPORT

SUPPORT@GENUINBIOTECH.COM  
TEL: +1-540-855-7041

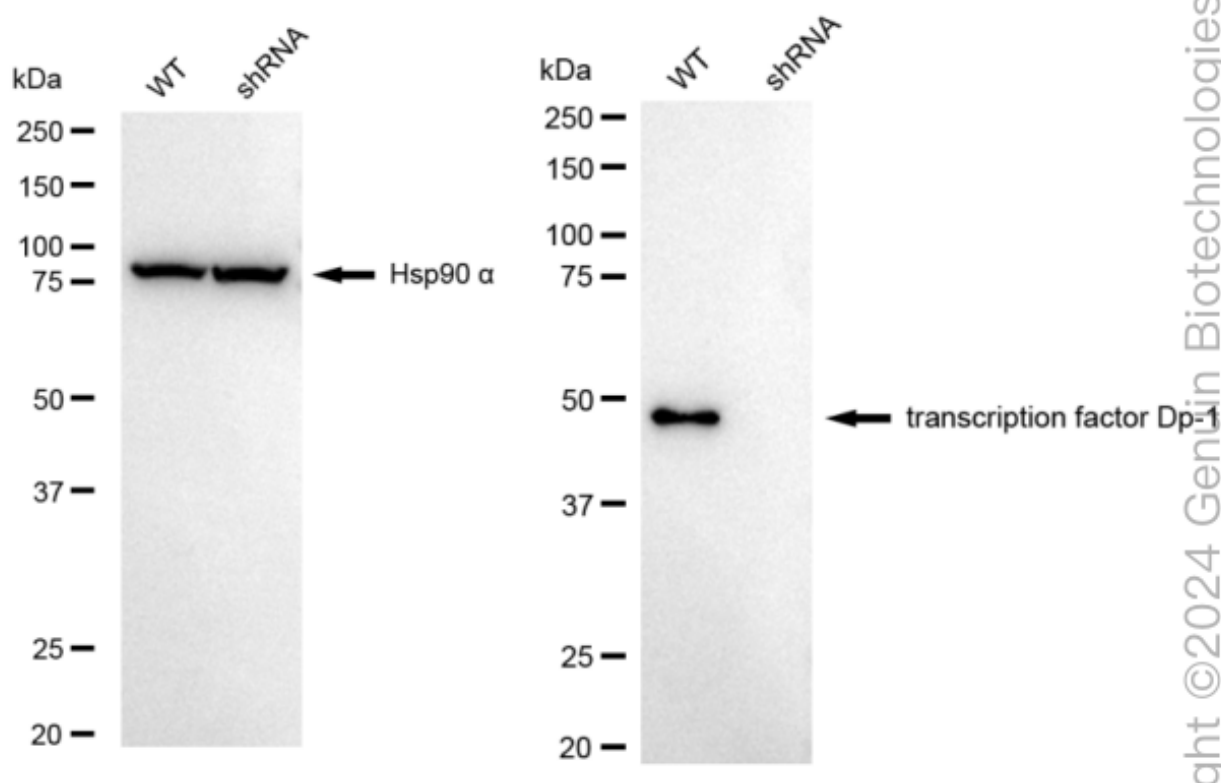
### ORDERS

SALES@GENUINBIOTECH.COM  
FAX: +1-540-855-7041

WWW.GENUINBIOTECH.COM

## KD-Validated Anti-Transcription Factor Dp-1 Recombinant Rabbit Monoclonal Antibody

PAGE 4



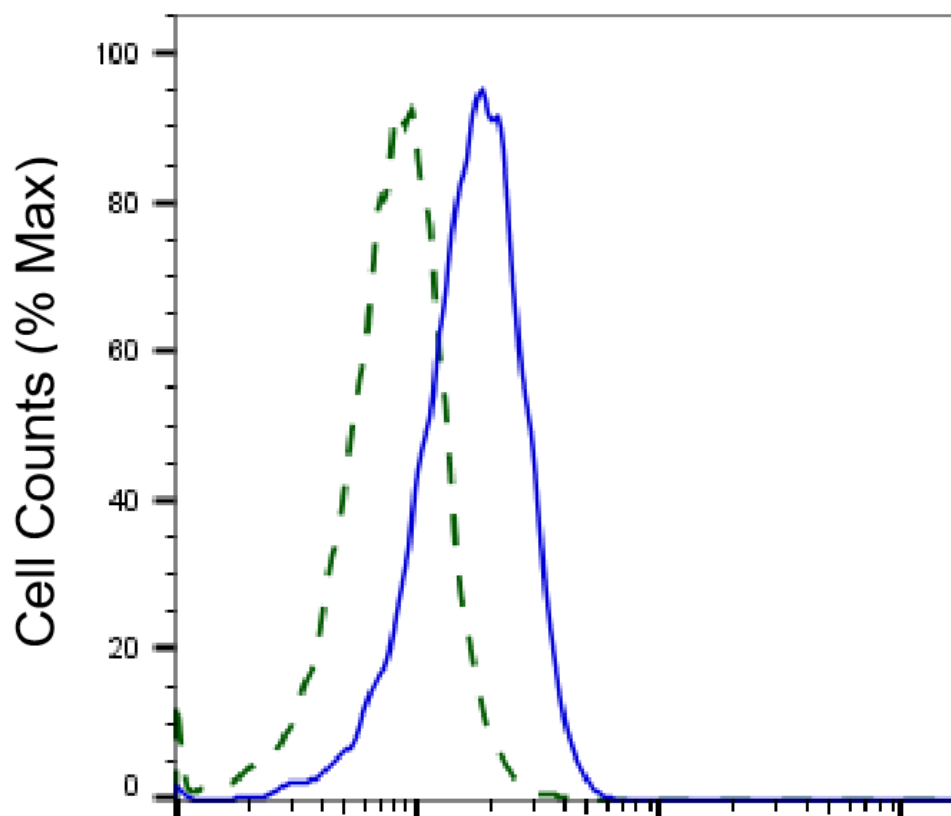
### SUPPORT

SUPPORT@GENUINBIOTECH.COM  
TEL: +1-540-855-7041

### ORDERS

SALES@GENUINBIOTECH.COM  
FAX: +1-540-855-7041

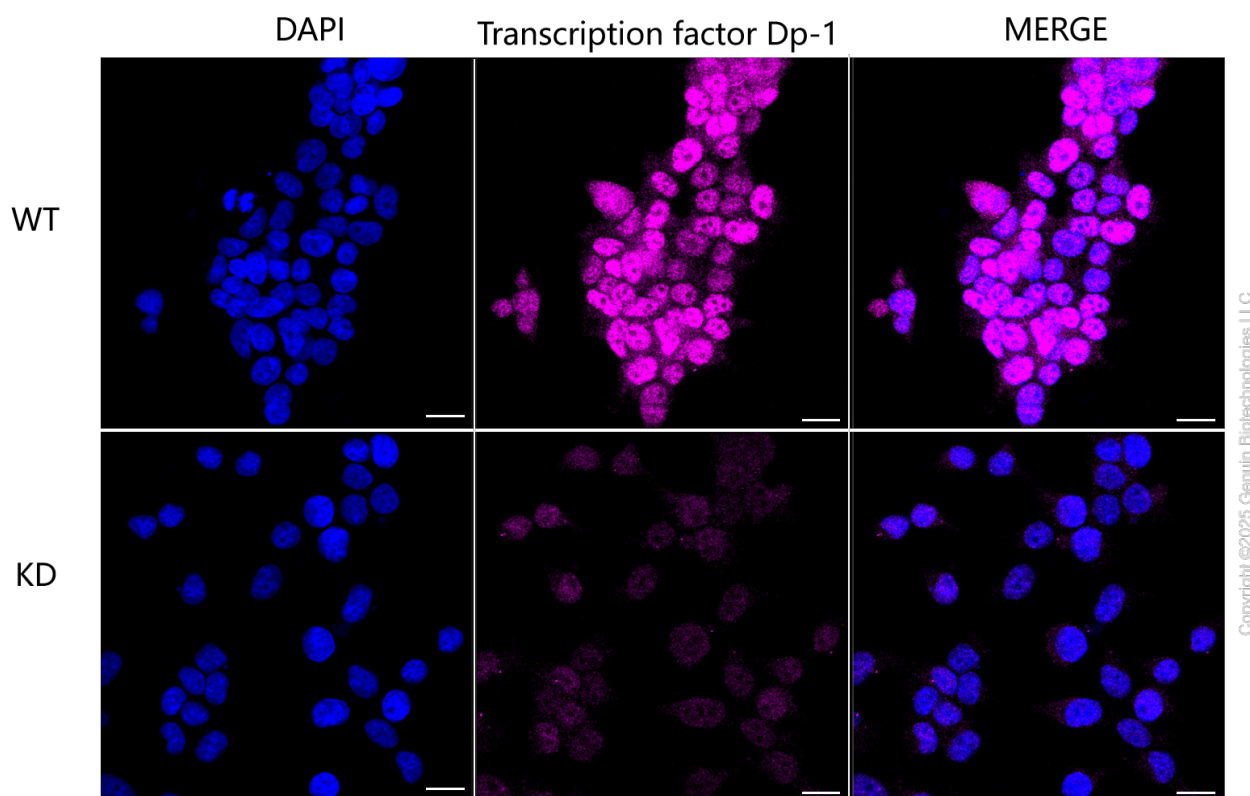
WWW.GENUINBIOTECH.COM



Copyright ©2025 Genuin Biotechnologies LLC

### transcription factor Dp-1-Alexa Fluor® 647

Validation of transcription factor Dp-1 knockdown using flow cytometry. Wild-type(WT, Blue) and knockdown(KD, Green) HeLa cells were stained with anti-transcription factor Dp-1 antibody (Cat#62819, 1:2,000) and analyzed using BD flow cytometer.



Immunocytochemical staining of HeLa cells using anti-Transcription factor Dp-1 antibody (Cat#62819, 1:1,000), Top panel: wild-type (WT); Bottom panel: Transcription factor Dp-1 shRNA knockdown (KD). Nuclei were stained blue with DAPI; Transcription factor Dp-1 was stained magenta with Alexa Fluor® 647. Scale bar, 20  $\mu$ m. Permeabilization: Triton.