

KD-Validated Anti-JUN Rabbit Polyclonal Antibody



Catalog #: 62824

Aliases

JUN; Jun Proto-Oncogene, AP-1 Transcription Factor Subunit; V-Jun Avian Sarcoma Virus 17 Oncogene Homolog 2; C-Jun; AP-1; Transcription Factor AP-1 Subunit Jun; Transcription Factor Jun; Proto-Oncogene C-Jun; Activator Protein 1; Jun Oncogene; AP1; P39; V-Jun Sarcoma Virus 17 Oncogene Homolog; Jun Activation Domain Binding Protein; Enhancer-Binding Protein AP1; Transcription Factor AP-1; Proto-Oncogene CJun; CJUN

Background

Gene Name: JUN

NCBI Gene Entry: [3725](#)

UniProt Entry: [P05412](#)

Application Information

Molecular Weight: Predicted, 36 kDa, observed, 48 kDa

Clonality: Rabbit polyclonal antibody

Species Reactivity: Human

Applications Tested: Western blotting (WB)

Immunogen

A synthesized peptide derived from human c-Jun

Isotype

Rabbit IgG

Storage Buffer

Supplied in PBS (pH 7.4) containing 50% glycerol, and 0.02% sodium azide.

Storage

Store at -20 °C for one year.

Recommended Dilutions

Western Blotting (WB): 1:2,500-1:5,000

Note: This product is for research use only.

Validation Data

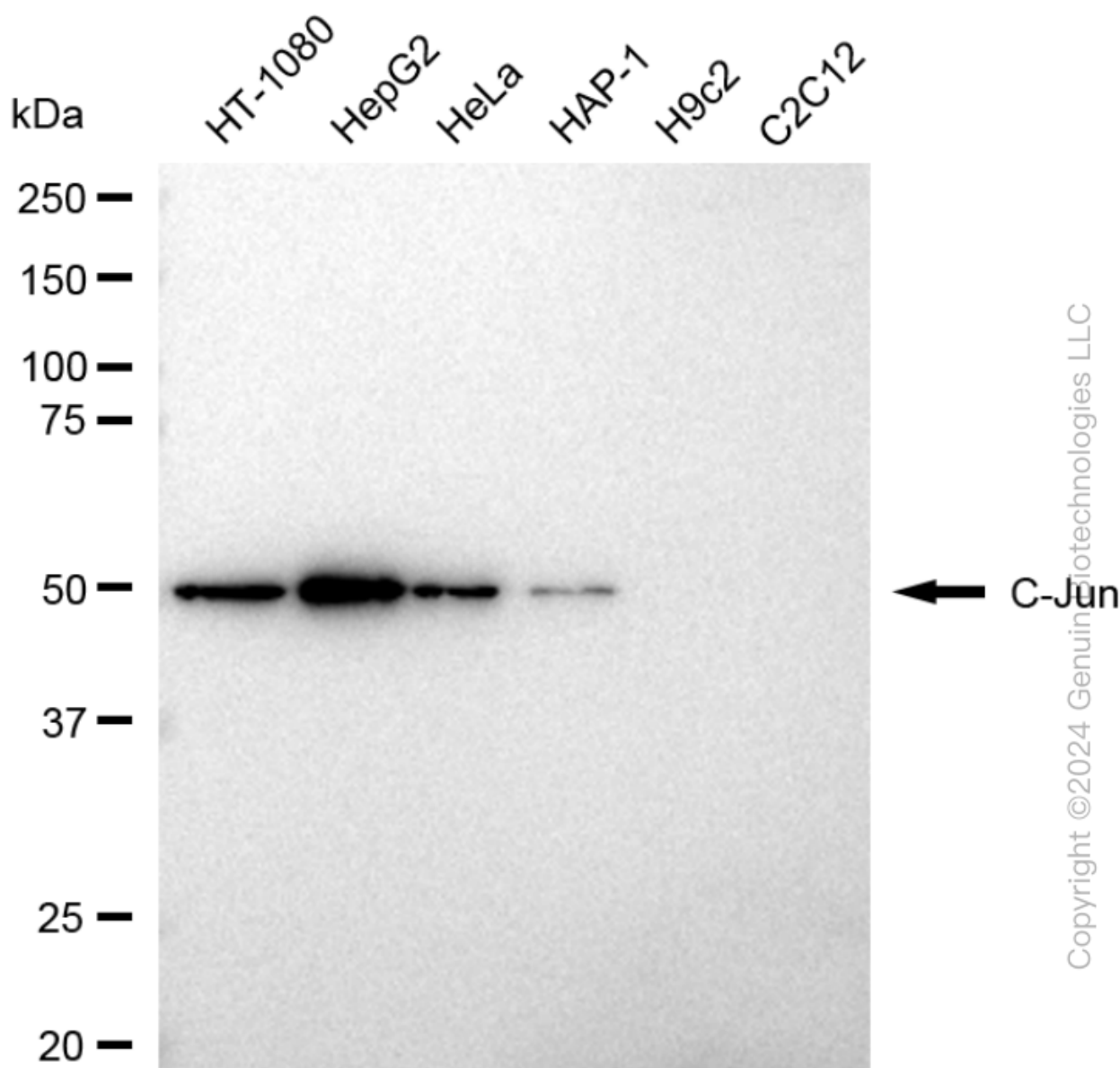
SUPPORT

SUPPORT@GENUINBIOTECH.COM
TEL: +1-540-855-7041

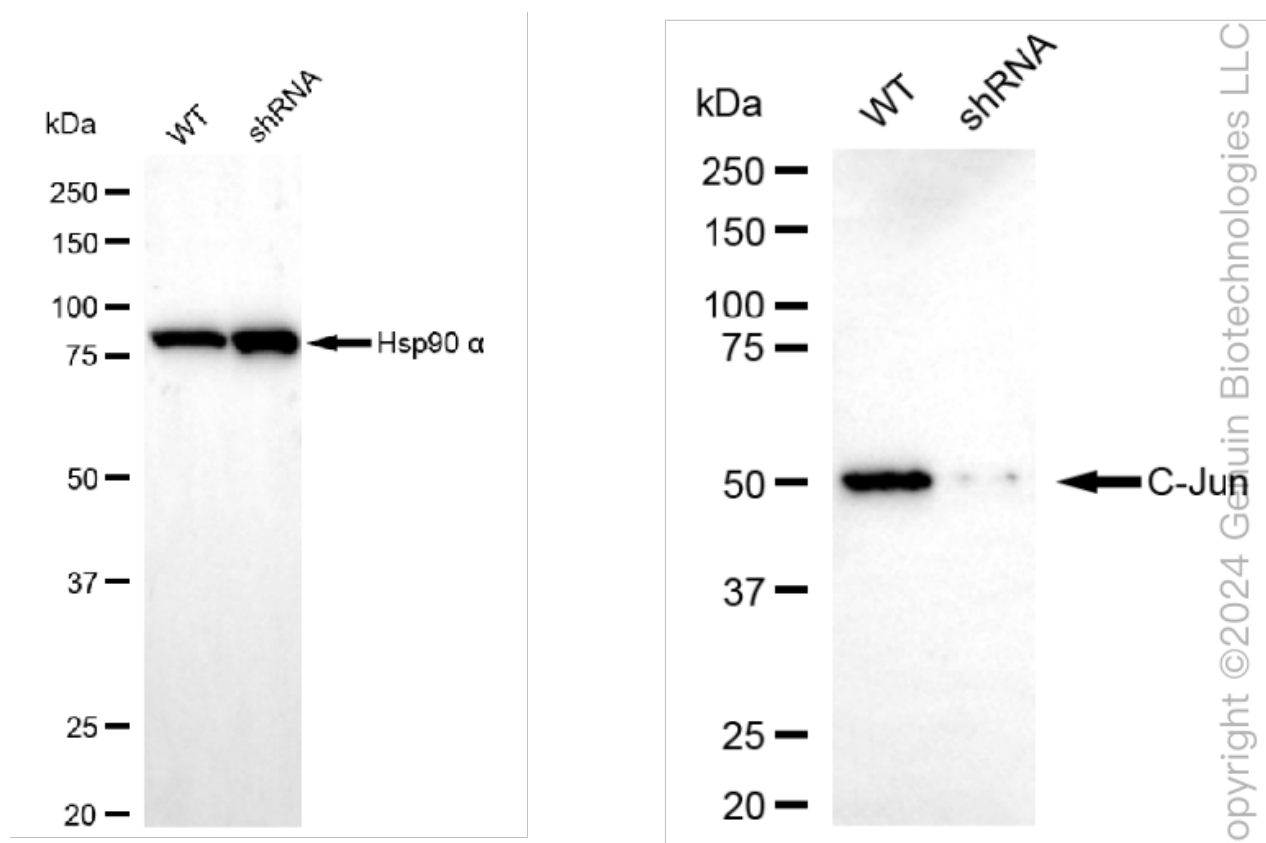
ORDERS

SALES@GENUINBIOTECH.COM
FAX: +1-540-855-7041

WWW.GENUINBIOTECH.COM



Western blotting analysis using anti-C-Jun antibody (Cat#62824). Total cell lysates (30 μ g) from various cell lines were loaded and separated by SDS-PAGE. The blot was incubated with anti-C-Jun antibody (Cat#62824, 1:5,000) and HRP-conjugated goat anti-rabbit secondary antibody (Cat#201, 1:20,000) respectively. Image was developed using FeQ™ ECL Substrate Kit (Cat#226).



Western blotting analysis using anti-C-Jun antibody (Cat#62824). C-Jun expression in wild type (WT) and C-Jun shRNA knockdown (KD) HeLa cells with 30 µg of total cell lysates. Hsp90 α serves as a loading control. The blot was incubated with anti-C-Jun antibody (Cat#62824, 1:5,000) and HRP-conjugated goat anti-rabbit secondary antibody (Cat#201, 1:20,000) respectively. Image was developed using FeQ™ ECL Substrate Kit (Cat#226).