

# KD-Validated Anti-EEF2K Rabbit Polyclonal Antibody



**Catalog #: 62828**

## Aliases

EEF2K; Eukaryotic Elongation Factor 2 Kinase; EEF-2K; CaMKIII; EEF-2 Kinase; EC 2.7.11.20; Calcium/Calmodulin-Dependent Eukaryotic Elongation Factor-2 Kinase; Calcium/Calmodulin-Dependent Eukaryotic Elongation Factor 2 Kinase; Calmodulin-Dependent Protein Kinase III; Eukaryotic Elongation Factor 2 Kinase; Elongation Factor-2 Kinase; Alternative Protein EEF2K; EC 2.7.11; HSU93850

## Background

Gene Name: EEF2K

NCBI Gene Entry: [29904](#)

UniProt Entry: [O00418](#)

## Application Information

Molecular Weight: Predicted, 82 kDa, observed, 105 kDa

Clonality: Rabbit polyclonal antibody

Species Reactivity: Human, rat

Applications Tested: Western blotting (WB)

## Immunogen

A synthesized peptide derived from human EEF2K

## Isotype

Rabbit IgG

## Storage Buffer

Supplied in PBS (pH 7.4) containing 50% glycerol, and 0.02% sodium azide.

## Storage

Store at -20 °C for one year.

## Recommended Dilutions

Western Blotting (WB): 1:2,500-1:5,000

**Note:** This product is for research use only.

## Validation Data

---

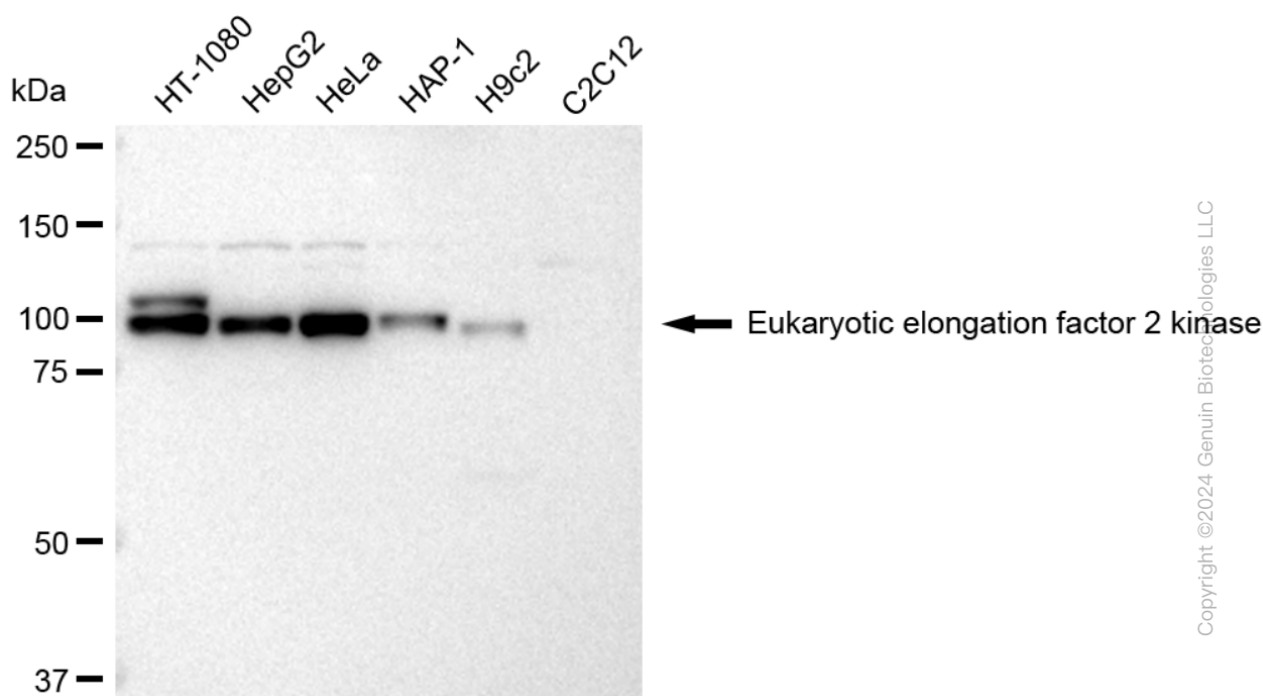
### SUPPORT

SUPPORT@GENUINBIOTECH.COM  
TEL: +1-540-855-7041

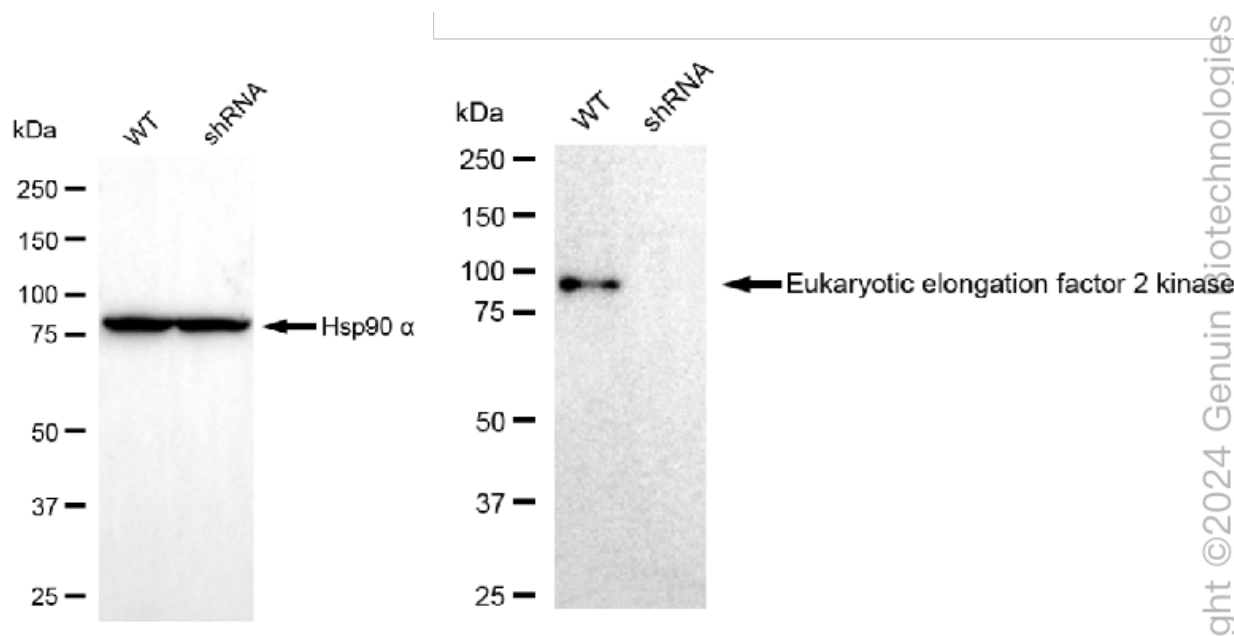
### ORDERS

SALES@GENUINBIOTECH.COM  
FAX: +1-540-855-7041

[WWW.GENUINBIOTECH.COM](http://WWW.GENUINBIOTECH.COM)



Western blotting analysis using anti-Eukaryotic elongation factor 2 kinase antibody (Cat#62828). Total cell lysates (30 µg) from various cell lines were loaded and separated by SDS-PAGE. The blot was incubated with anti-Eukaryotic elongation factor 2 kinase antibody (Cat#62828, 1:5,000) and HRP-conjugated goat anti-rabbit secondary antibody (Cat#201, 1:20,000) respectively. Image was developed using FeQ™ ECL Substrate Kit (Cat#226).



Western blotting analysis using anti-Eukaryotic elongation factor 2 kinase antibody (Cat#62828). Eukaryotic elongation factor 2 kinase expression in wild type (WT) and Eukaryotic elongation factor 2 kinase shRNA knockdown (KD) HeLa cells with 30 µg of total cell lysates. β-Tubulin

## **KD-Validated Anti-EEF2K Rabbit Polyclonal Antibody**

PAGE 3

serves as a loading control. The blot was incubated with anti-Eukaryotic elongation factor 2 kinase antibody (Cat#62828, 1:5,000) and HRP-conjugated goat anti-rabbit secondary antibody (Cat#201, 1:20,000) respectively. Image was developed using FeQ™ ECL Substrate Kit (Cat#226).

---

### **SUPPORT**

SUPPORT@GENUINBIOTECH.COM  
TEL: +1-540-855-7041

### **ORDERS**

SALES@GENUINBIOTECH.COM  
FAX: +1-540-855-7041

**[WWW.GENUINBIOTECH.COM](http://WWW.GENUINBIOTECH.COM)**