

KD-Validated Anti-Prolyl 4-Hydroxylase Subunit Beta Mouse Monoclonal Antibody



Catalog #: 62838

Aliases

P4HB; Prolyl 4-Hydroxylase Subunit Beta; PDIA1; PDI; P4Hbeta; ERBA2L; PROHB; PO4HB; PO4DB; DSI; GIT; Procollagen-Proline, 2-Oxoglutarate 4-Dioxygenase (Proline 4-Hydroxylase), Beta Polypeptide; Protein Disulfide Isomerase Family A, Member 1; Protein Disulfide Isomerase-Associated 1; Cellular Thyroid Hormone-Binding Protein; Prolyl 4-Hydroxylase, Beta Polypeptide; Collagen Prolyl 4-Hydroxylase Beta; Protein Disulfide-Isomerase; EC 5.3.4.1; P55; Procollagen-Proline, 2-Oxoglutarate 4-Dioxygenase (Proline 4-Hydroxylase), Beta Polypeptide (Protein Disulfide Isomerase; Thyroid Hormone Binding Protein P55) ; Procollagen-Proline, 2-Oxoglutarate 4-Dioxygenase (Proline 4-Hydroxylase), Beta Polypeptide (Protein Disulfide Isomerase-Associated 1); Protein Disulfide Isomerase/Oxidoreductase; Glutathione-Insulin Transhydrogenase; Thyroid Hormone-Binding Protein P55; Testicular Secretory Protein Li 32; Procollagen Hydroxylase; CLCRP1; PHDB

Background

Gene Name: P4HB

NCBI Gene Entry: [5034](#)

UniProt Entry: [P07237](#)

Application Information

Molecular Weight: Predicted, 57 kDa, observed, 57 kDa

Clonality: Mouse monoclonal antibody

Clone ID: 24GB2780

Species Reactivity: Human

Applications Tested: Western blotting (WB), flow cytometry (FCM), immunocytochemistry (IC)

Immunogen

Recombinant protein of human PDI

Isotype

Mouse IgG1 kappa

Storage Buffer

Supplied in PBS (pH 7.4) containing 50% glycerol, and 0.02% sodium azide.

Storage

Store at -20 °C for one year.

SUPPORT

SUPPORT@GENUINBIOTECH.COM
TEL: +1-540-855-7041

ORDERS

SALES@GENUINBIOTECH.COM
FAX: +1-540-855-7041

WWW.GENUINBIOTECH.COM

Recommended Dilutions

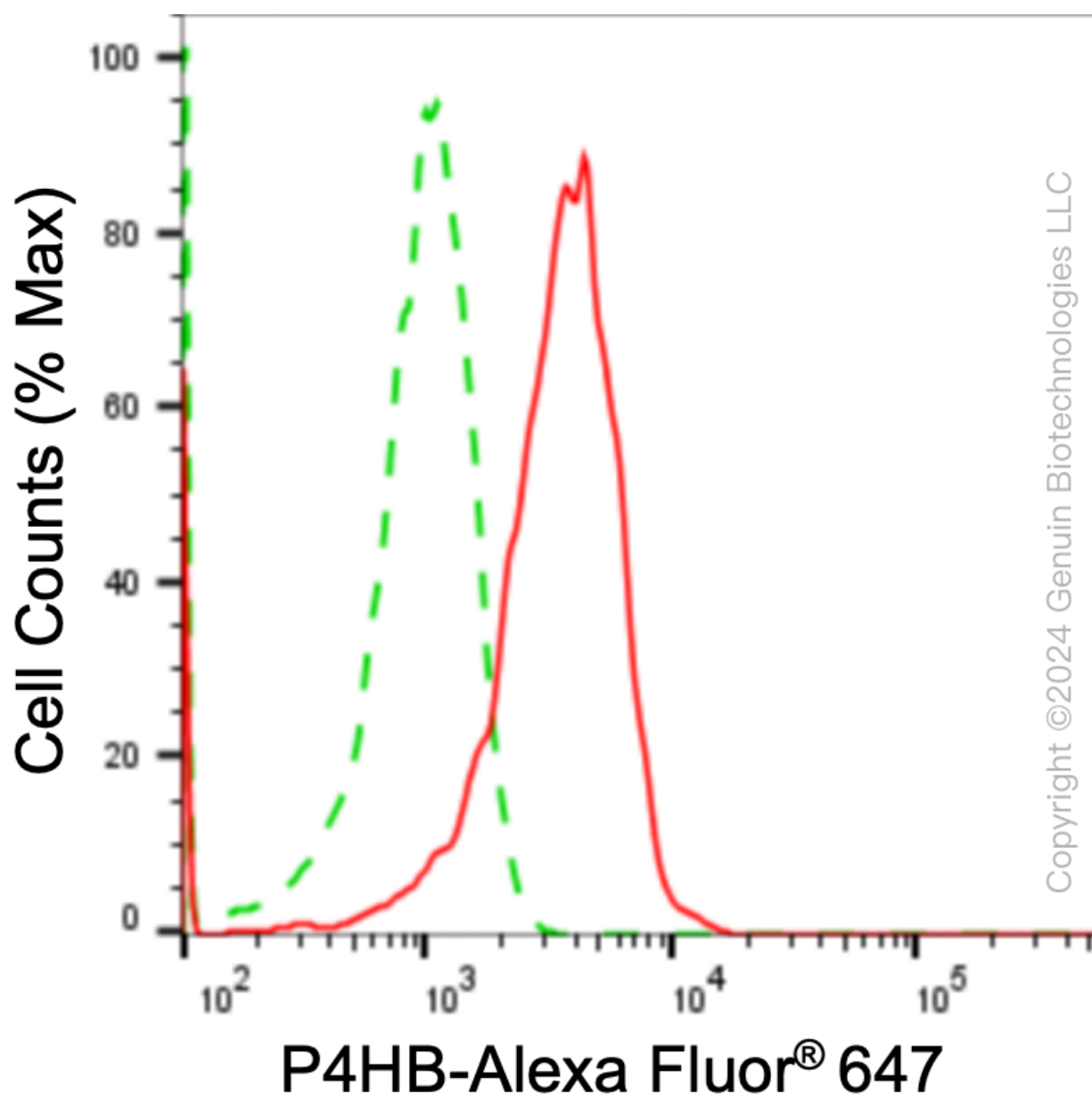
Western Blotting (WB): 1:2,500-1:5,000

Immunocytochemistry (IC): 1:100-1:1,000

Flow Cytometry (FCM) : 1:2,000

Note: This product is for research use only.

Validation Data



Flow cytometric analysis of P4HB expression in HepG2 cells using anti-P4HB antibody (Cat#62838, 1:2,000). Green, isotype control; red, P4HB.

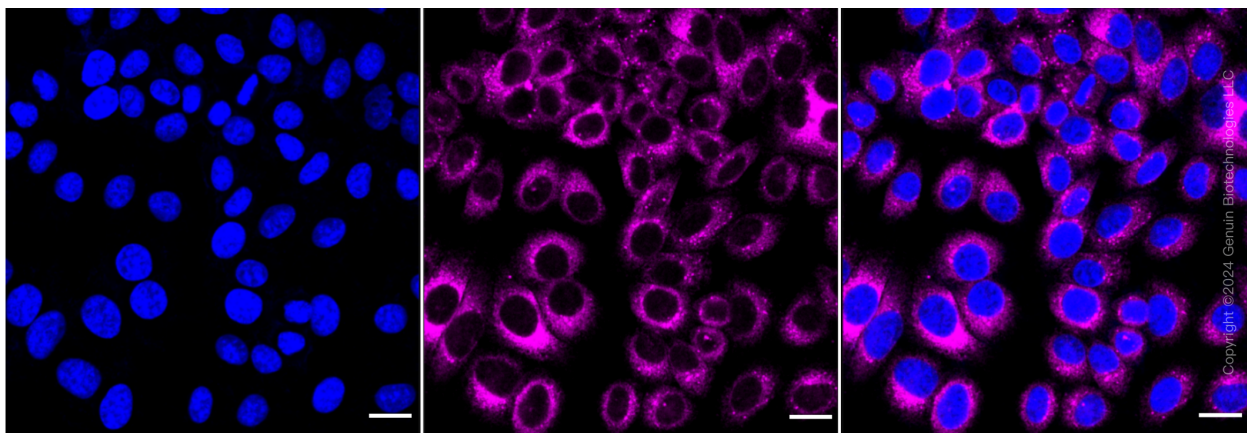
SUPPORT

SUPPORT@GENUINBIOTECH.COM
TEL: +1-540-855-7041

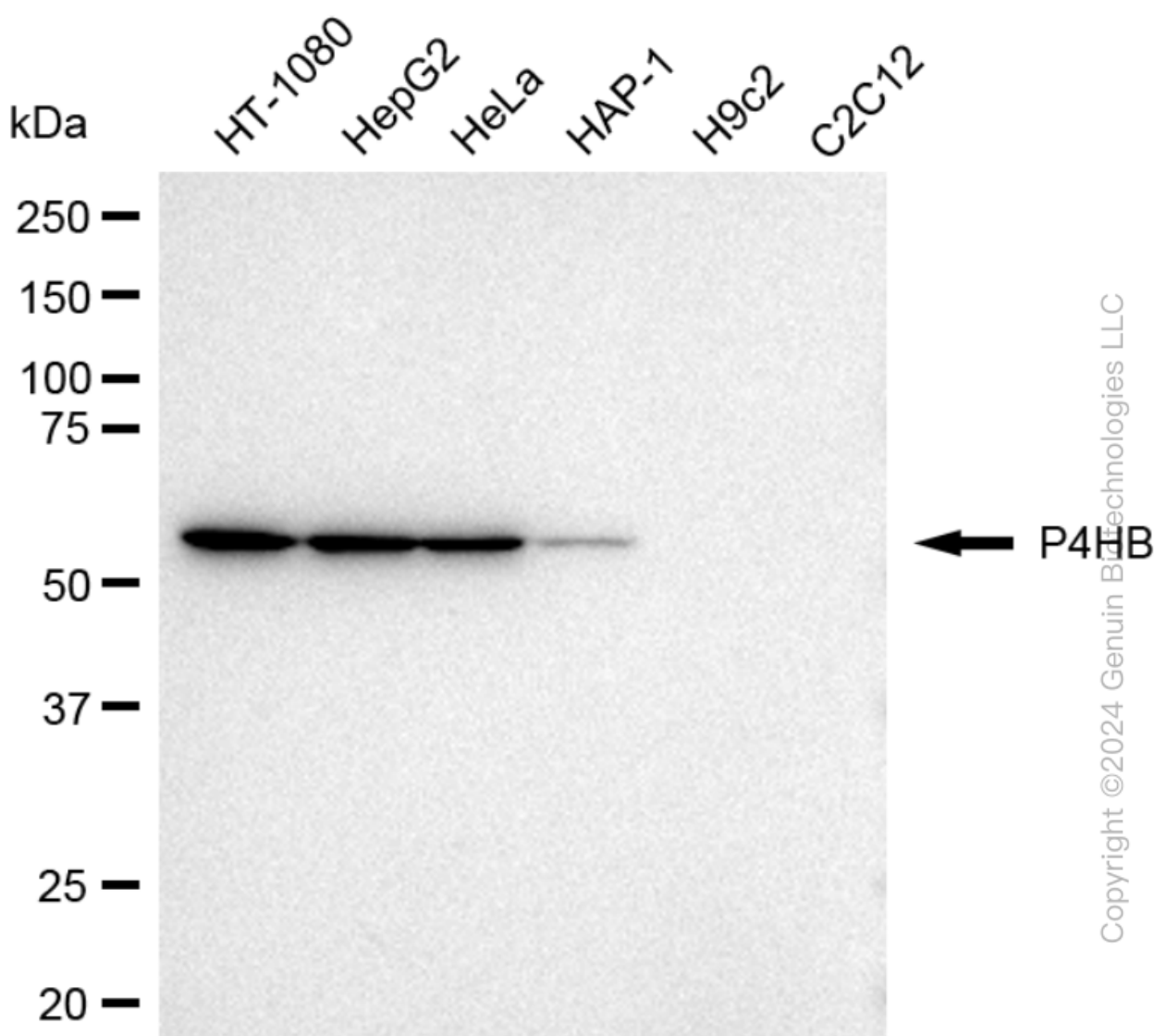
ORDERS

SALES@GENUINBIOTECH.COM
FAX: +1-540-855-7041

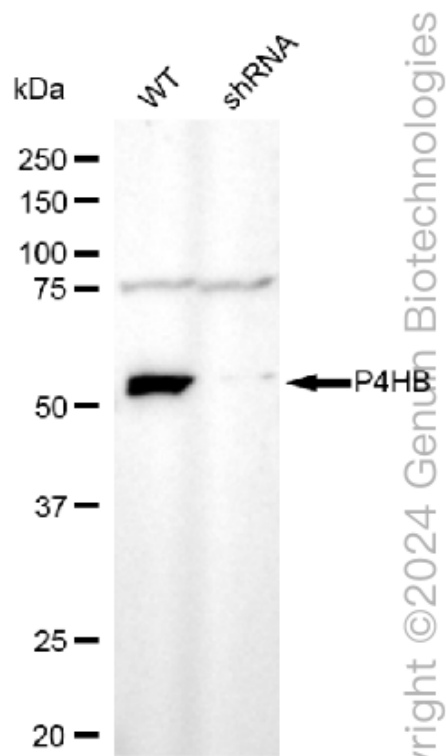
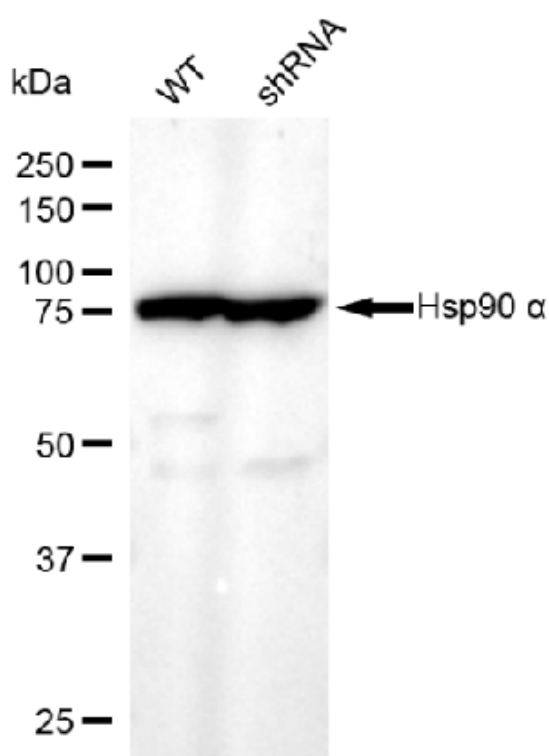
WWW.GENUINBIOTECH.COM



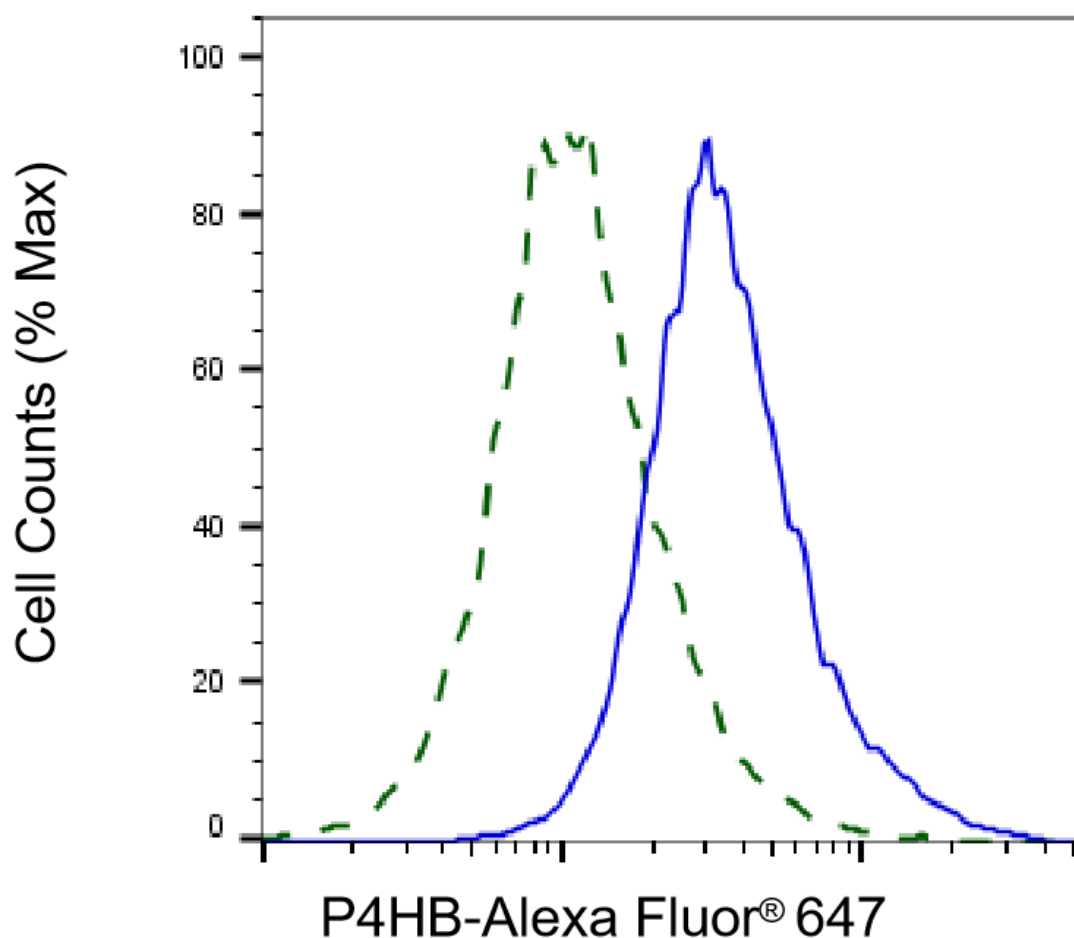
Immunocytochemical staining of HepG2 cells with anti-P4HB antibody (Cat#62838, 1:1000). Nuclei were stained blue with DAPI; P4HB was stained magenta with Alexa Fluor® 647. Images were taken using Leica stellaris 5. Protein abundance based on laser Intensity and smart gain: Medium. Scale bar: 20 μ m.



Western blotting analysis using anti-P4HB antibody (Cat#62838). Total cell lysates (30 µg) from various cell lines were loaded and separated by SDS-PAGE. The blot was incubated with anti-P4HB antibody (Cat#62838, 1:5,000) and HRP-conjugated goat anti-mouse secondary antibody (Cat#101, 1:20,000) respectively. Image was developed using FeQ™ ECL Substrate Kit (Cat#226).



Western blotting analysis using anti-P4HB antibody (Cat#62838). P4HB expression in wild type (WT) and P4HB shRNA knockdown (KD) HT-1080 cells with 30 µg of total cell lysates. Hsp90 α serves as a loading control. The blot was incubated with anti-P4HB antibody (Cat#62838, 1:5,000) and HRP-conjugated goat anti-mouse secondary antibody (Cat#101, 1:20,000) respectively. Image was developed using FeQ™ ECL Substrate Kit (Cat#226).



Copyright ©2025 Genuin Biotechnologies LLC

Validation of P4HB knockdown using flow cytometry. Wild-type(WT, Blue) and knockdown(KD, Green) HT1080 cells were stained with anti-P4HB antibody (Cat#62838, 1:2,000) and analyzed using BD flow cytometer.