

# KD-Validated Anti-LAMP1 Mouse Monoclonal Antibody



**Catalog #: 62841**

## Aliases

LAMP1; Lysosomal Associated Membrane Protein 1; CD107a; Lysosome-Associated Membrane Glycoprotein 1; Lysosome-Associated Membrane Protein 1; CD107 Antigen-Like Family Member A; LAMP-1; Lysosomal-Associated Membrane Protein 1; CD107a Antigen; LGP120; LAMPA

## Background

Gene Name: LAMP1

NCBI Gene Entry: [3916](#)

UniProt Entry: [P11279](#)

## Application Information

Molecular Weight: Predicted, 45 kDa, observed, 90-120 kDa

Clonality: Mouse monoclonal antibody

Clone ID: 24GB2795

Species Reactivity: Human

Applications Tested: Western blotting (WB)

## Immunogen

Recombinant protein of human CD107a

## Isotype

Mouse IgG1 kappa

## Storage Buffer

Supplied in PBS (pH 7.4) containing 50% glycerol, and 0.02% sodium azide.

## Storage

Store at -20 °C for one year.

## Recommended Dilutions

Western Blotting (WB): 1:2,500-1:5,000

**Note:** This product is for research use only.

## Validation Data

---

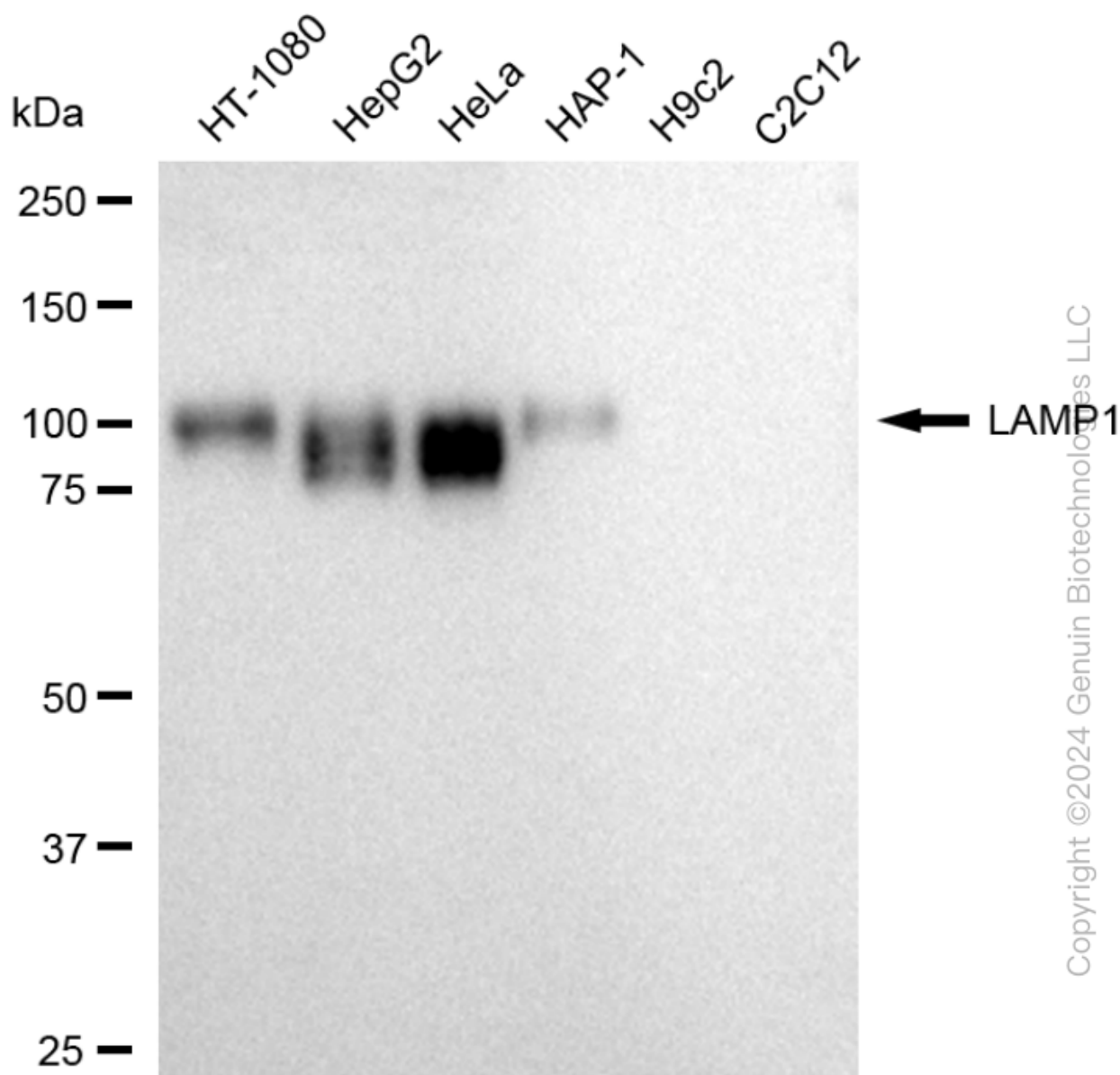
### SUPPORT

SUPPORT@GENUINBIOTECH.COM  
TEL: +1-540-855-7041

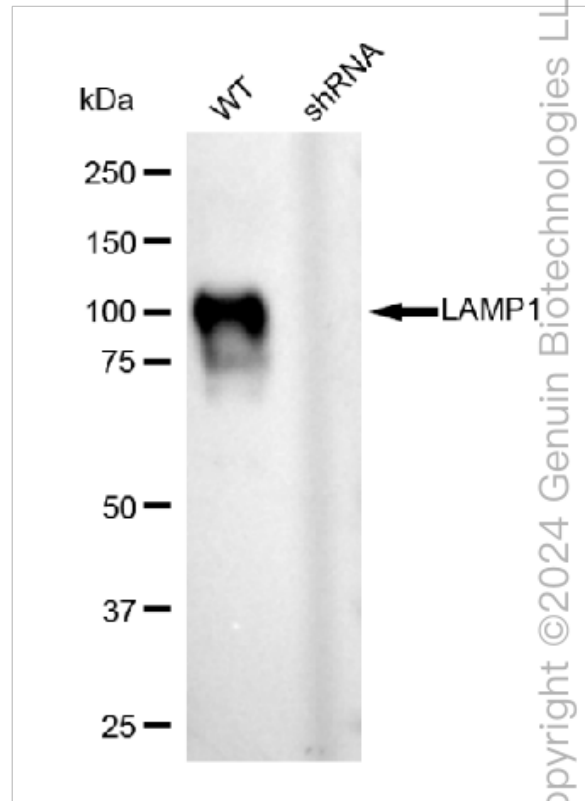
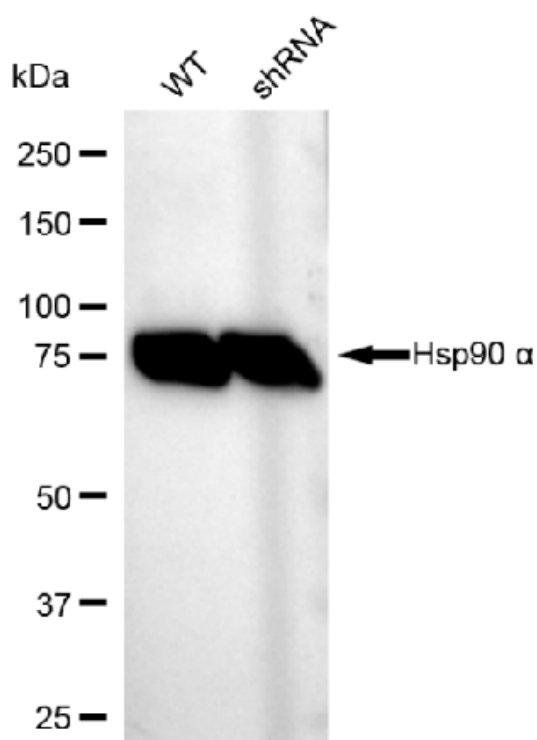
### ORDERS

SALES@GENUINBIOTECH.COM  
FAX: +1-540-855-7041

[WWW.GENUINBIOTECH.COM](http://WWW.GENUINBIOTECH.COM)



Western blotting analysis using anti-LAMP1 antibody (Cat#62841). Total cell lysates (30 µg) from various cell lines were loaded and separated by SDS-PAGE. The blot was incubated with anti-LAMP1 antibody (Cat#62841, 1:5,000) and HRP-conjugated goat anti-mouse secondary antibody (Cat#101, 1:20,000) respectively. Image was developed using FeQ™ ECL Substrate Kit (Cat#226).



Western blotting analysis using anti-LAMP1 antibody (Cat#62841). LAMP1 expression in wild type (WT) and LAMP1 shRNA knockdown (KD) HT-1080 cells with 30 µg of total cell lysates. β-Tubulin serves as a loading control. The blot was incubated with anti-LAMP1 antibody (Cat#62841, 1:5,000) and HRP-conjugated goat anti-mouse secondary antibody (Cat#101, 1:20,000) respectively. Image was developed using FeQ™ ECL Substrate Kit (Cat#226).