

KD-Validated Anti-Cyclin Dependent Kinase 4 Mouse Monoclonal Antibody



Catalog #: 62842

Aliases

CDK4; Cyclin Dependent Kinase 4; PSK-J3; Cell Division Protein Kinase 4; Cyclin-Dependent Kinase 4; EC 2.7.11.22; EC 2.7.11; CMM3

Background

Gene Name: CDK4

NCBI Gene Entry: [1019](#)

UniProt Entry: [P11802](#)

Application Information

Molecular Weight: Predicted, 34 kDa, observed, 33 kDa

Clonality: Mouse monoclonal antibody

Clone ID: 24GB2800

Species Reactivity: Human, mouse, rat

Applications Tested: Western blotting (WB), immunocytochemistry (IC)

Immunogen

Recombinant protein of human CDK4

Isotype

Mouse IgG2a kappa

Storage Buffer

Supplied in PBS (pH 7.4) containing 50% glycerol, and 0.02% sodium azide.

Storage

Store at -20 °C for one year.

Recommended Dilutions

Western Blotting (WB): 1:2,500-1:5,000

Immunocytochemistry (IC): 1:100-1:1,000

Note: This product is for research use only.

Validation Data

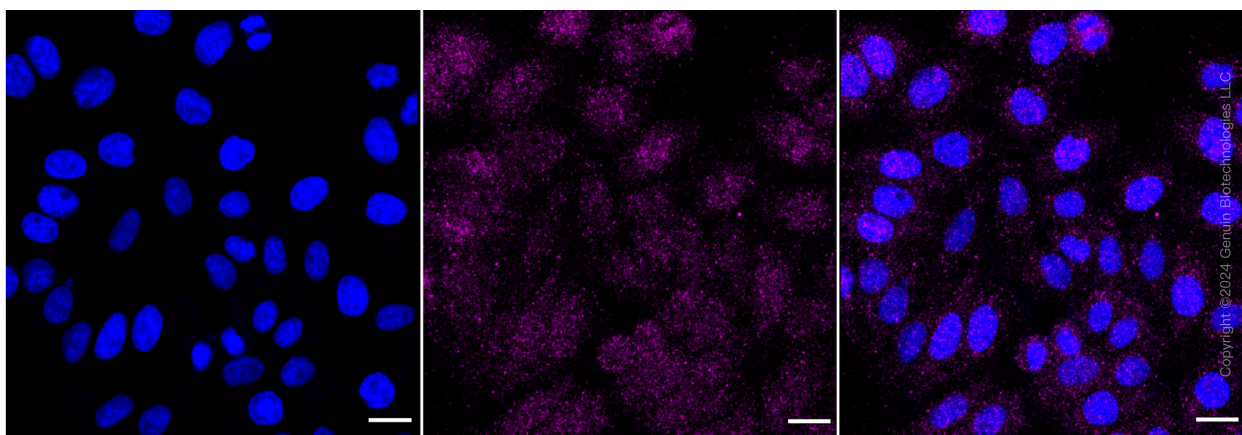
SUPPORT

SUPPORT@GENUINBIOTECH.COM
TEL: +1-540-855-7041

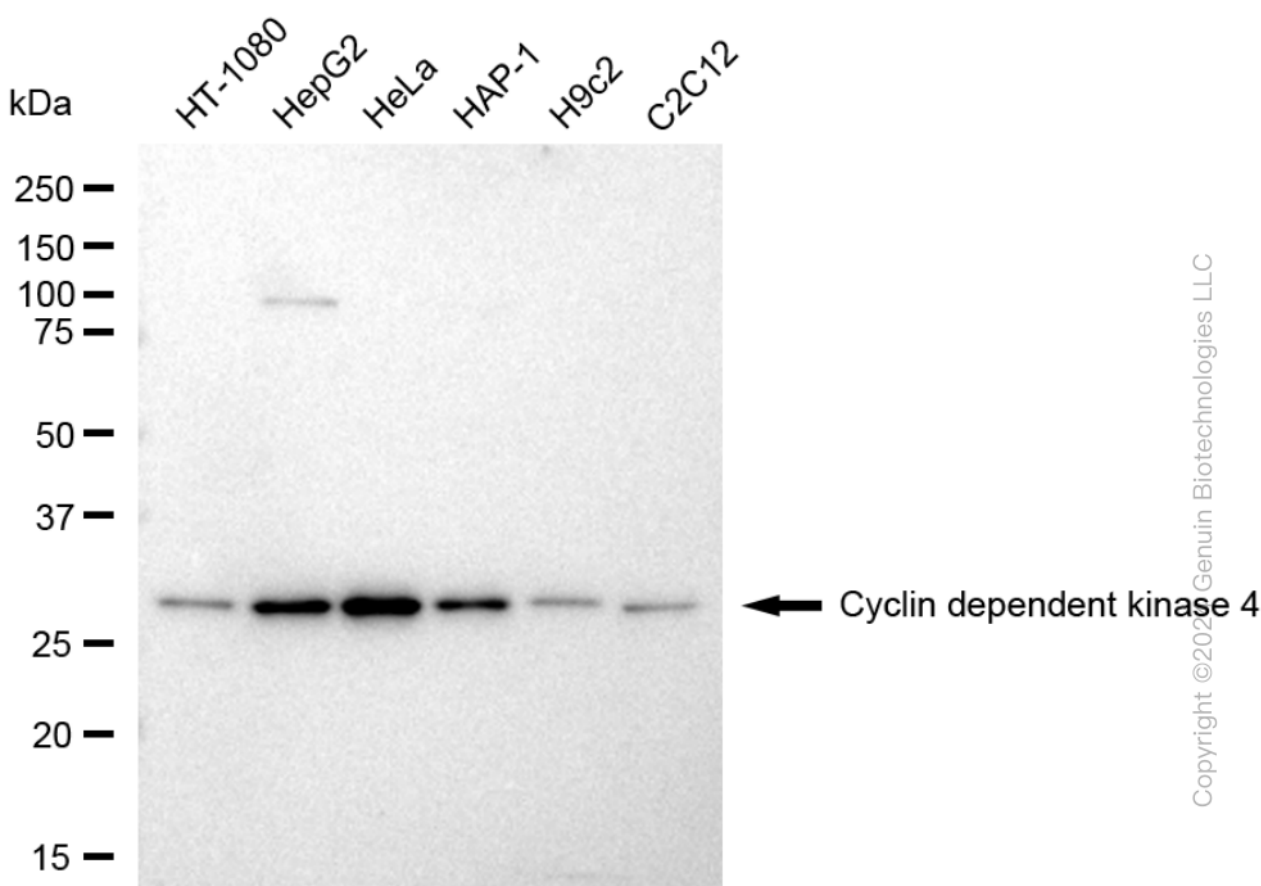
ORDERS

SALES@GENUINBIOTECH.COM
FAX: +1-540-855-7041

WWW.GENUINBIOTECH.COM



Immunocytochemical staining of HepG2 cells with anti-cyclin dependent kinase 4 antibody (Cat#62842, 1:1,000). Nuclei were stained blue with DAPI; Cyclin dependent kinase 4 was stained magenta with Alexa Fluor® 647. Images were taken using Leica stellaris 5. Protein abundance based on laser Intensity and smart gain: Medium. Scale bar: 20 μ m.

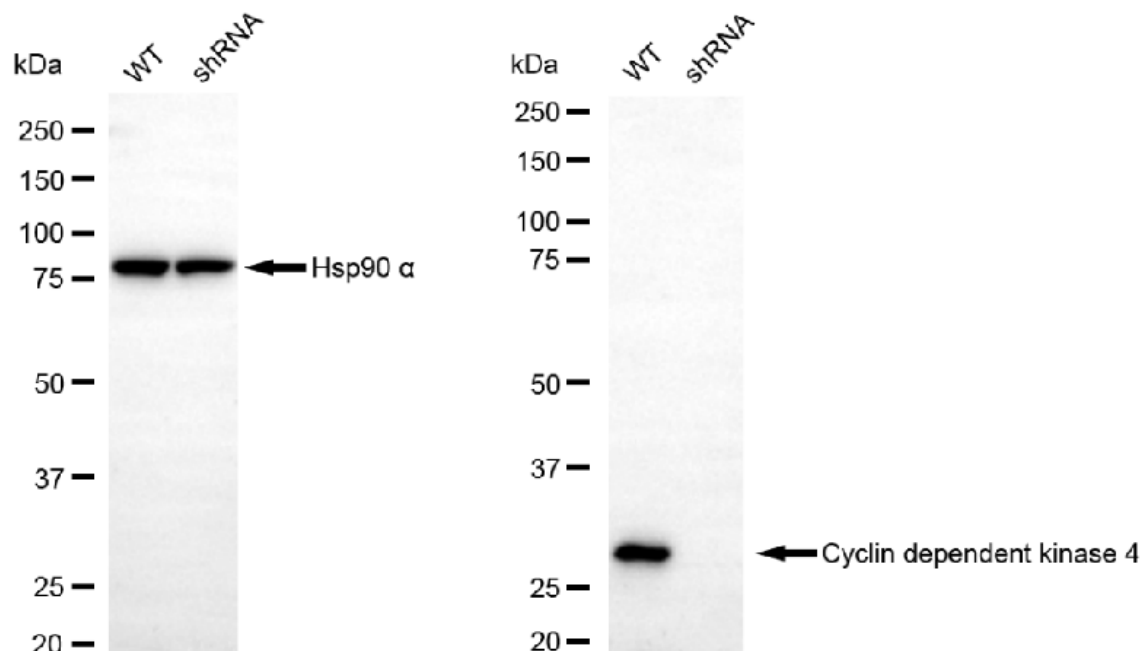


Western blotting analysis using anti-Cyclin dependent kinase 4 antibody (Cat#62842). Total cell lysates (30 μ g) from various cell lines were loaded and separated by SDS-PAGE. The blot was incubated with anti-Cyclin dependent kinase 4 antibody (Cat#62842, 1:5,000) and HRP-conjugated goat anti-mouse secondary antibody (Cat#101, 1:20,000) respectively. Image was

KD-Validated Anti-Cyclin Dependent Kinase 4 Mouse Monoclonal Antibody

PAGE 3

developed using FeQ™ ECL Substrate Kit (Cat#226).



Western blotting analysis using anti-Cyclin dependent kinase 4 antibody (Cat#62842). Cyclin dependent kinase 4 expression in wild type (WT) and Cyclin dependent kinase 4 shRNA knockdown (KD) HT-1080 cells with 30 µg of total cell lysates. β-Tubulin serves as a loading control. The blot was incubated with anti-Cyclin dependent kinase 4 antibody (Cat#62842, 1:5,000) and HRP-conjugated goat anti-mouse secondary antibody (Cat#101, 1:20,000) respectively. Image was developed using FeQ™ ECL Substrate Kit (Cat#226).

SUPPORT

SUPPORT@GENUINBIOTECH.COM
TEL: +1-540-855-7041

ORDERS

SALES@GENUINBIOTECH.COM
FAX: +1-540-855-7041

WWW.GENUINBIOTECH.COM