

# KD-Validated Anti-PCNA Mouse Monoclonal Antibody



**Catalog #: 62845**

## Aliases

PCNA; Proliferating Cell Nuclear Antigen 2; Cyclin; DNA Polymerase Delta Auxiliary Protein; ATLD2

## Background

Gene Name: PCNA

NCBI Gene Entry: [5111](#)

UniProt Entry: [P12004](#)

## Application Information

Molecular Weight: Predicted, 29 kDa, observed, 35 kDa

Clonality: Mouse monoclonal antibody

Clone ID: 24GB2810

Species Reactivity: Human, mouse, rat

Applications Tested: Western blotting (WB), immunohistochemistry (IHC)

## Immunogen

A synthesized peptide derived from human PCNA

## Isotype

Mouse IgG1

## Storage Buffer

Supplied in PBS (pH 7.4) containing 50% glycerol, and 0.02% sodium azide.

## Storage

Store at -20 °C for one year.

## Recommended Dilutions

Western Blotting (WB): 1:1,000-1:5,000

Immunohistochemistry (IHC): 1:100-1:200

**Note:** This product is for research use only.

## Validation Data

---

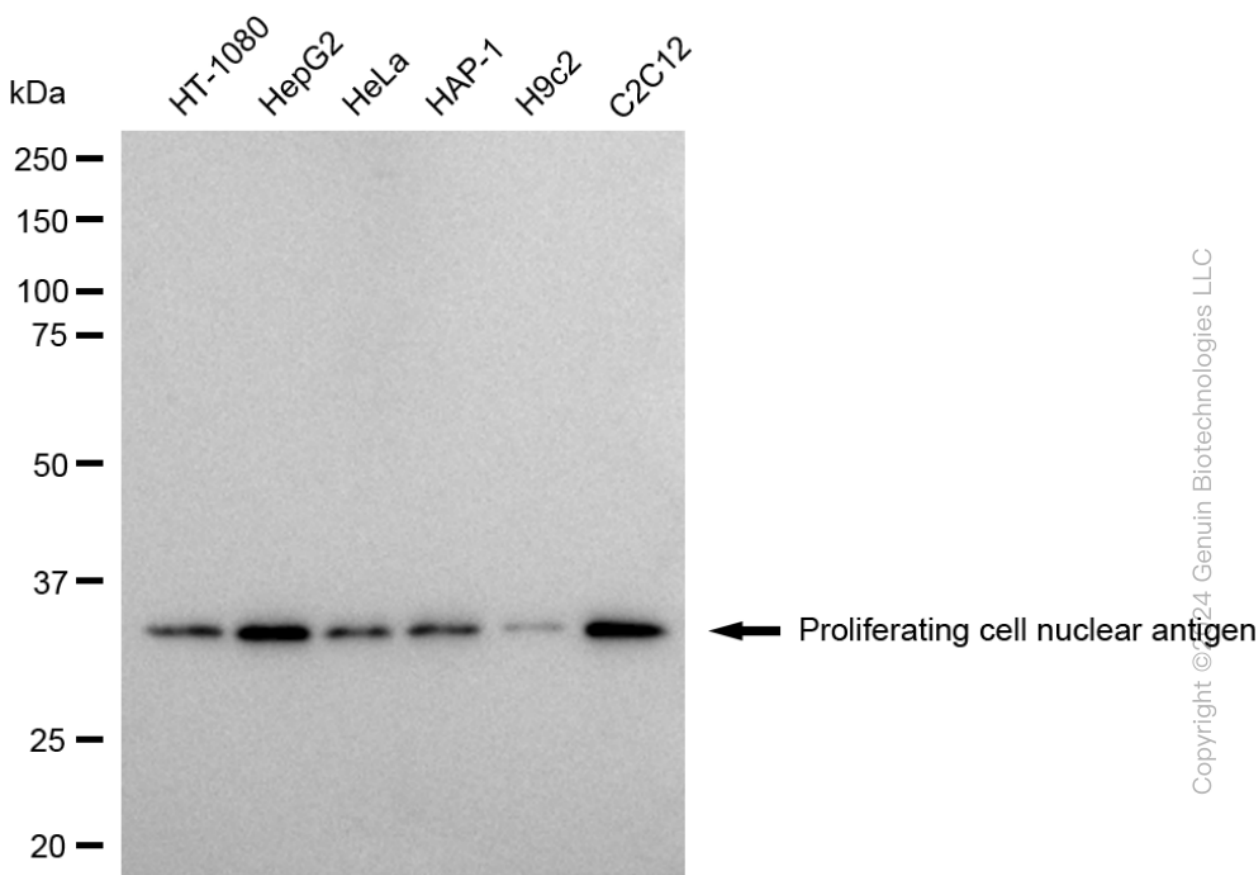
### SUPPORT

SUPPORT@GENUINBIOTECH.COM  
TEL: +1-540-855-7041

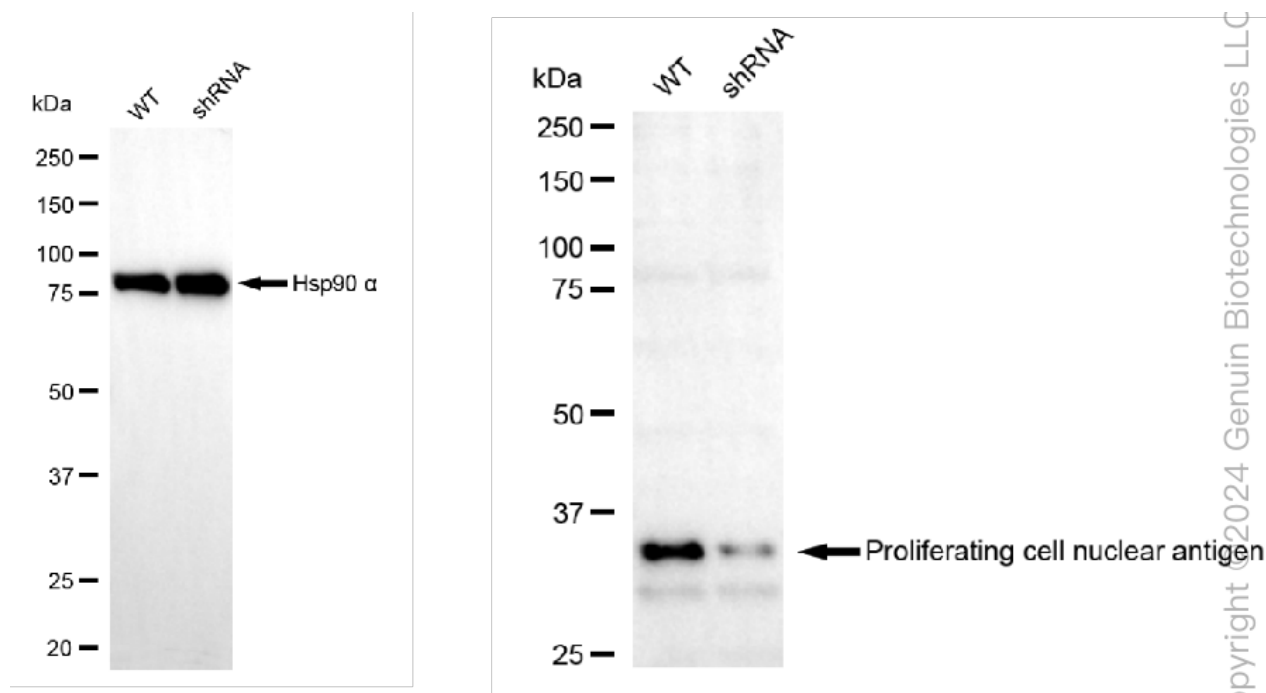
### ORDERS

SALES@GENUINBIOTECH.COM  
FAX: +1-540-855-7041

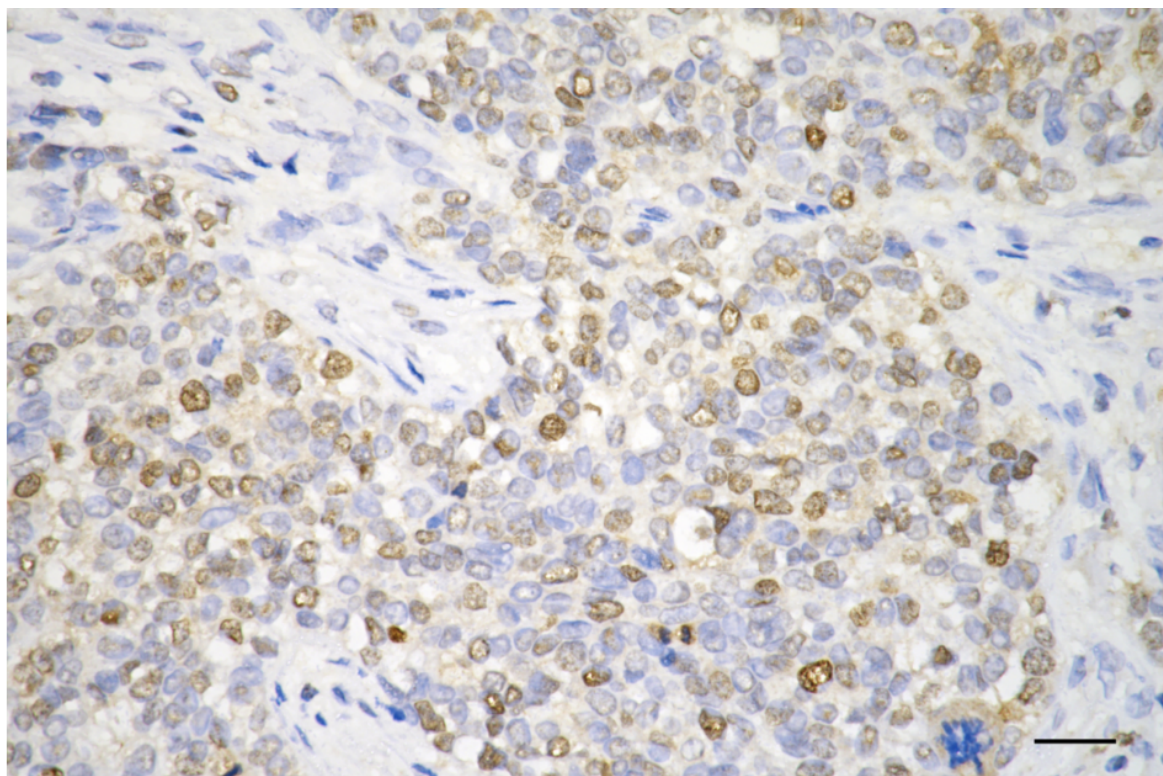
[WWW.GENUINBIOTECH.COM](http://WWW.GENUINBIOTECH.COM)



Western blotting analysis using anti-Proliferating cell nuclear antigen antibody (Cat#62845). Total cell lysates (30  $\mu$ g) from various cell lines were loaded and separated by SDS-PAGE. The blot was incubated with anti-Proliferating cell nuclear antigen antibody (Cat#62845, 1:5,000) and HRP-conjugated goat anti-mouse secondary antibody (Cat#101, 1:20,000) respectively. Image was developed using FeQ™ ECL Substrate Kit (Cat#226).



Western blotting analysis using anti-Proliferating cell nuclear antigen antibody (Cat#62845). Proliferating cell nuclear antigen expression in wild type (WT) and Proliferating cell nuclear antigen shRNA knockdown (KD) HeLa cells with 30 µg of total cell lysates. Hsp90 α serves as a loading control. The blot was incubated with anti-Proliferating cell nuclear antigen antibody (Cat#62845, 1:5,000) and HRP-conjugated goat anti-mouse secondary antibody (Cat#101, 1:20,000) respectively. Image was developed using FeQ™ ECL Substrate Kit (Cat#226).



## **KD-Validated Anti-PCNA Mouse Monoclonal Antibody**

PAGE 4

Immunohistochemistry was performed on paraffin-embedded human breast carcinoma using anti-proliferating cell nuclear antigen antibody (Cat#62845, 1:200). Antigen retrieval was done in sodium citrate buffer (pH 6.0). DAB was used for detection, with hematoxylin counterstaining. Images were acquired using a Nikon Ci-L Plus microscope (40× objective). Scale bar: 25  $\mu$ m.

---

### **SUPPORT**

SUPPORT@GENUINBIOTECH.COM  
TEL: +1-540-855-7041

### **ORDERS**

SALES@GENUINBIOTECH.COM  
FAX: +1-540-855-7041

**[WWW.GENUINBIOTECH.COM](http://WWW.GENUINBIOTECH.COM)**