

KD-Validated Anti-MITF Mouse Monoclonal Antibody



Catalog #: 62865

Aliases

MITF; Melanocyte Inducing Transcription Factor; BHLHe32; Microphthalmia-Associated Transcription Factor; MI; Melanogenesis Associated Transcription Factor; Class E Basic Helix-Loop-Helix Protein 32; WS2A; WS2; Microphthalmia-Associated Transcription Factor; Homolog Of Mouse Microphthalmia; Waardenburg Syndrome, Type 2A; BHLHE32; COMMAD; MITF-A; CMM8

Background

Gene Name: MITF

NCBI Gene Entry: [4286](#)

UniProt Entry: [O75030](#)

Application Information

Molecular Weight: Predicted, 59 kDa; observed, 57 kDa

Clonality: Mouse monoclonal antibody

Clone ID: 24GB2905

Species Reactivity: Human

Applications Tested: Western blotting (WB), immunocytochemistry (IC)

Immunogen

Recombinant protein of human MITF

Isotype

Mouse IgG1 kappa

Storage Buffer

Supplied in PBS (pH 7.4) containing 50% glycerol, and 0.02% sodium azide.

Storage

Store at -20 °C for one year.

Recommended Dilutions

Western Blotting (WB): 1:1,000-1:5,000

Immunocytochemistry (IC): 1:100-1:1,000

SUPPORT

SUPPORT@GENUINBIOTECH.COM
TEL: +1-540-855-7041

ORDERS

SALES@GENUINBIOTECH.COM
FAX: +1-540-855-7041

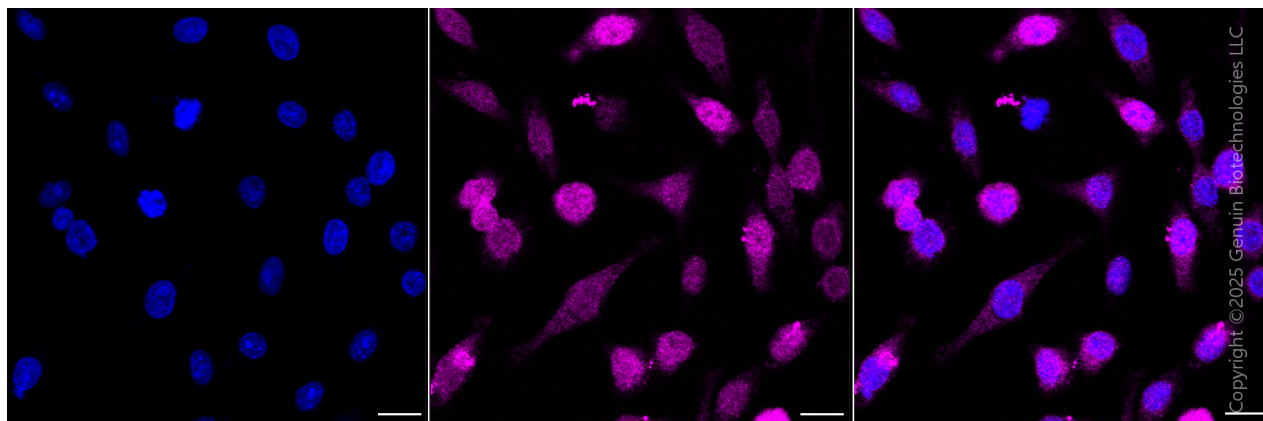
WWW.GENUINBIOTECH.COM

KD-Validated Anti-MITF Mouse Monoclonal Antibody

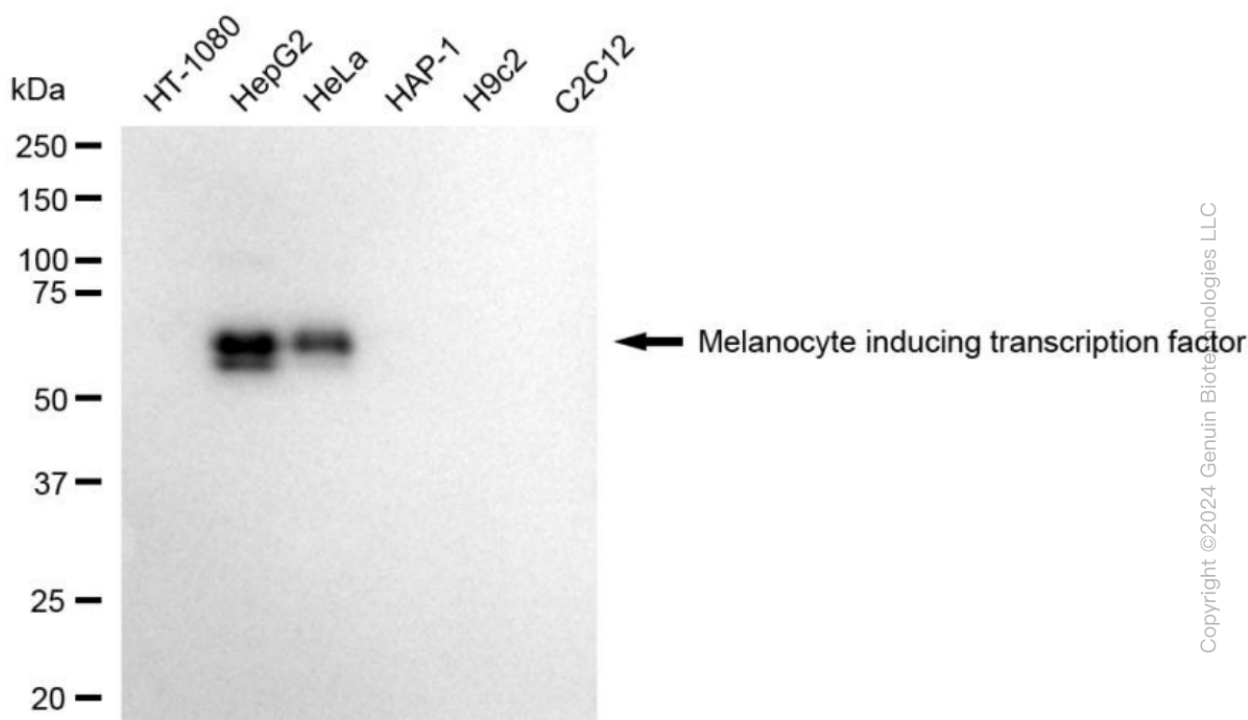
PAGE 2

Note: This product is for research use only.

Validation Data



Immunocytochemical staining of HepG2 cells with anti-Melanocyte inducing transcription factor antibody (Cat#62865, 1:1,000). Nuclei were stained blue with DAPI; Melanocyte inducing transcription factor was stained magenta with Alexa Fluor® 647. Images were taken using Leica stellaris 5. Protein abundance based on laser Intensity and smart gain: Medium. Scale bar, 20 μ m.



Western blotting analysis using anti-Melanocyte inducing transcription factor antibody (Cat#62865). Total cell lysates (30 μ g) from various cell lines were loaded and separated by SDS-PAGE. The blot was incubated with anti-Melanocyte inducing transcription factor antibody (Cat#62865, 1:5,000) and HRP-conjugated goat anti-mouse secondary antibody (Cat#101, 1:20,000) respectively. Image was developed using FeQ™ ECL Substrate Kit (Cat#226).

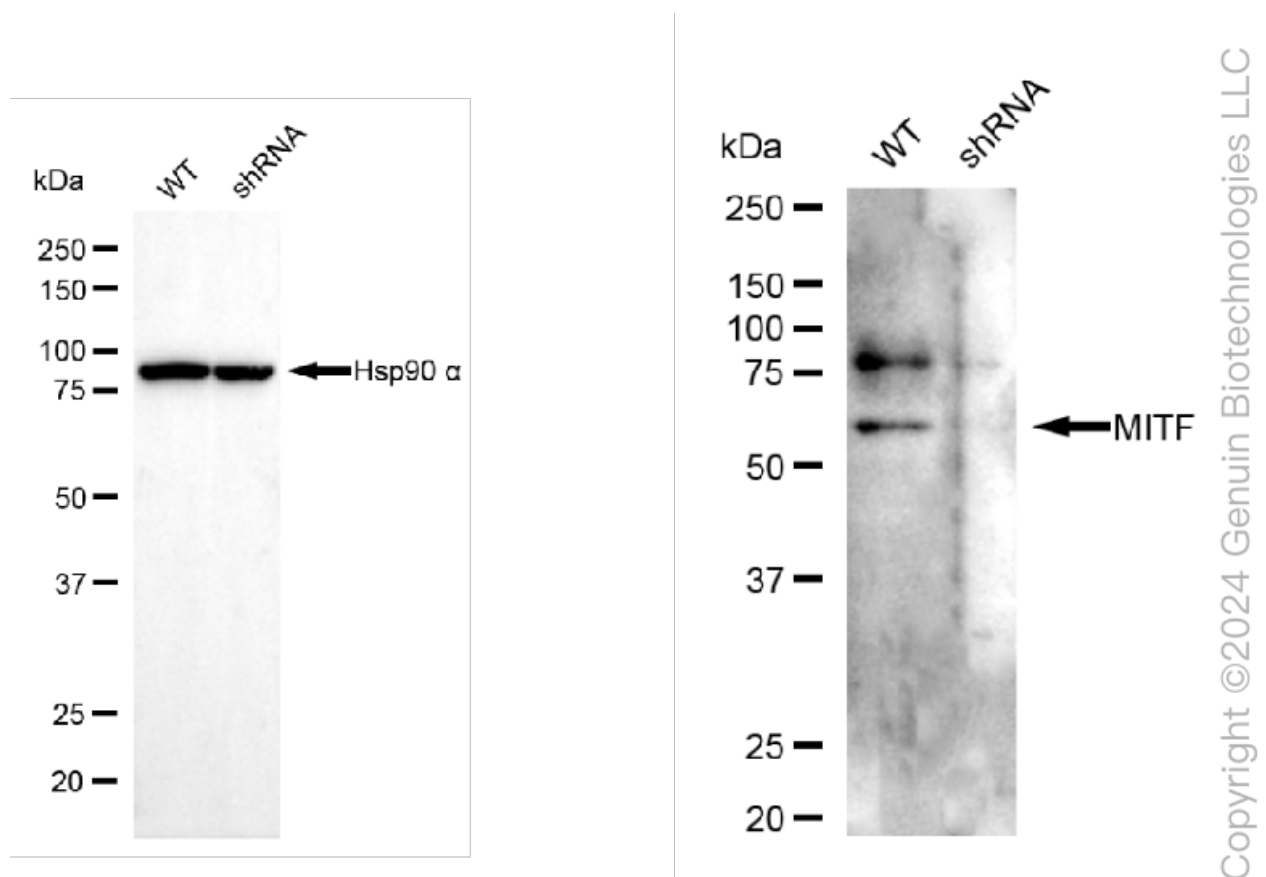
SUPPORT

SUPPORT@GENUINBIOTECH.COM
TEL: +1-540-855-7041

ORDERS

SALES@GENUINBIOTECH.COM
FAX: +1-540-855-7041

WWW.GENUINBIOTECH.COM



Western blotting analysis using anti-melanocyte inducing transcription factor antibody (Cat#62865). Melanocyte inducing transcription factor expression in wild-type (WT) and melanocyte inducing transcription factor (MITF) shRNA knockdown (KD) HeLa cells with 30 μ g of total cell lysates. Hsp90 α serves as a loading control. The blot was incubated with anti-melanocyte inducing transcription factor antibody (Cat#62865, 1:5,000) and HRP-conjugated goat anti-mouse secondary antibody (Cat#101, 1:20,000) respectively. Image was developed using FeQ™ ECL Substrate Kit (Cat#226).