

KD-Validated Anti-Phosphoglycerate Kinase 1 Mouse Monoclonal Antibody



Catalog #: 62871

Aliases

PGK1; Phosphoglycerate Kinase 1; Cell Migration-Inducing Gene 10 Protein; Primer Recognition Protein; EC 2.7.2.3; PRP; PGKA; Epididymis Secretory Sperm Binding Protein Li 68p; HEL-S-68p; MIG10

Background

Gene Name: PGK1

NCBI Gene Entry: [5230](#)

UniProt Entry: [P00558](#)

Application Information

Molecular Weight: Predicted, 45 kDa; observed, 44 kDa

Clonality: Mouse monoclonal antibody

Clone ID: 24GB2935

Species Reactivity: Human, mouse, rat

Applications Tested: Western blotting (WB), flow cytometry (FCM), immunocytochemistry (IC), Immunohistochemistry (IHC)

Immunogen

A synthesized peptide derived from human PGK1

Storage Buffer

Supplied in PBS (pH 7.4) containing 50% glycerol, and 0.02% sodium azide.

Storage

Store at -20 °C for one year.

Recommended Dilutions

Western Blotting (WB): 1:1,000-1:5,000

Flow Cytometry (FCM): 1:2,000

Immunocytochemistry (IC): 1:100-1:1,000

Immunohistochemistry (IHC): 1:100-1:200

Note: This product is for research use only.

Validation Data

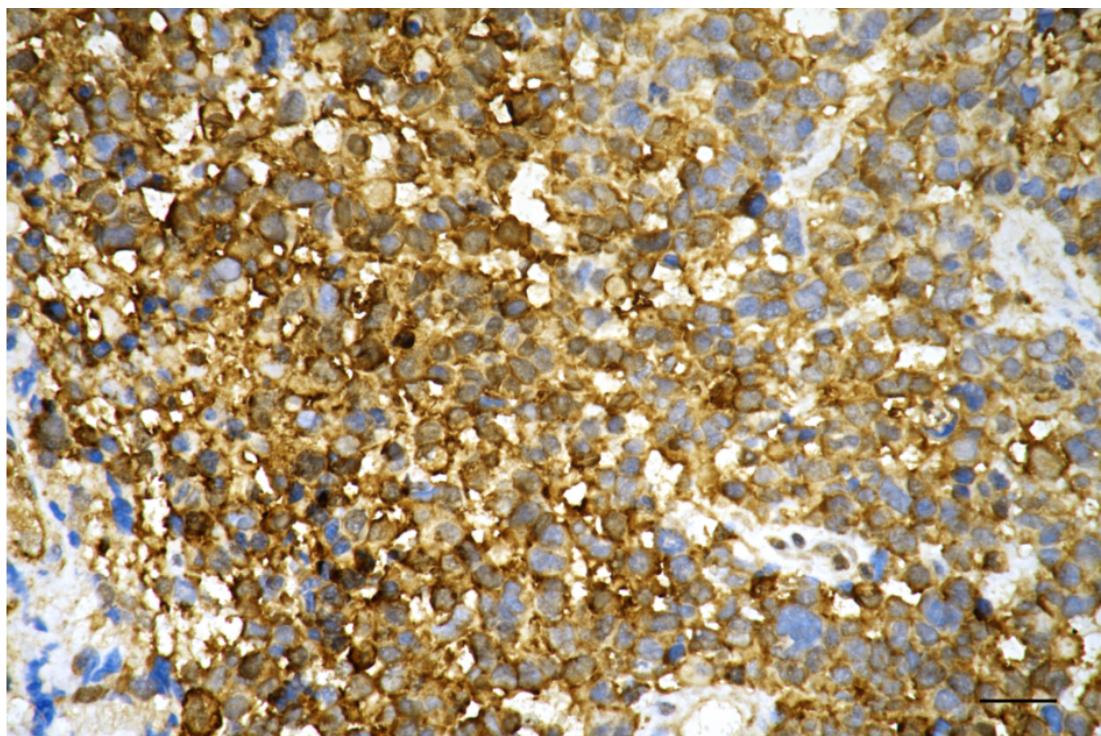
SUPPORT

SUPPORT@GENUINBIOTECH.COM
TEL: +1-540-855-7041

ORDERS

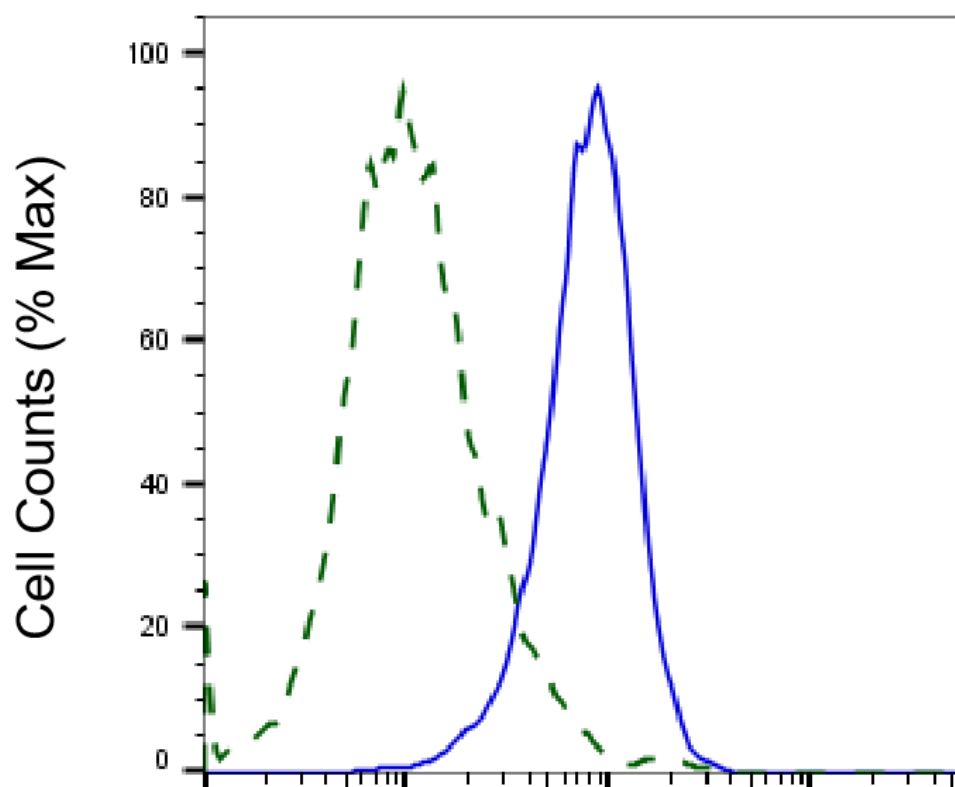
SALES@GENUINBIOTECH.COM
FAX: +1-540-855-7041

WWW.GENUINBIOTECH.COM



Copyright ©2025 Genuin Biotechnologies LLC

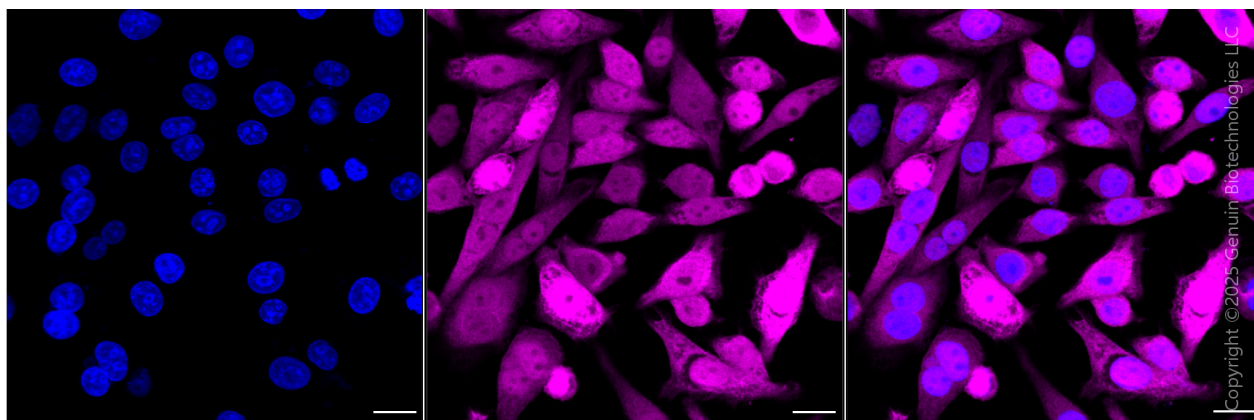
Immunohistochemistry was performed on paraffin-embedded human glioblastoma using anti-phosphoglycerate kinase 1 antibody (Cat#62871, 1:200). Antigen retrieval was done in sodium citrate buffer (pH 6.0). DAB was used for detection, with hematoxylin counterstaining. Images were acquired using a Nikon Ci-L Plus microscope (40× objective). Scale bar: 25 μ m.



Copyright ©2025 Genuin Biotechnologies LLC

Phosphoglycerate kinase 1-Alexa Fluor® 647

Validation of Phosphoglycerate kinase 1 knockdown using flow cytometry. Wild-type(WT, Blue) and knockdown(KD, Green) HeLa cells were stained with anti-Phosphoglycerate kinase 1 antibody (Cat#62871, 1:2,000) and analyzed using CytoFLEX.



Immunocytochemical staining of HepG2 cells with anti-Phosphoglycerate kinase 1 antibody(Cat#62871, 1:1,000) . Nuclei were stained blue with DAPI; Phosphoglycerate kinase 1 was stained magenta with Alexa Fluor® 647. Images were taken using Leica stellaris 5. Protein abundance based on laser Intensity and smart gain: High. Scale bar, 20 μ m.

SUPPORT

SUPPORT@GENUINBIOTECH.COM
TEL: +1-540-855-7041

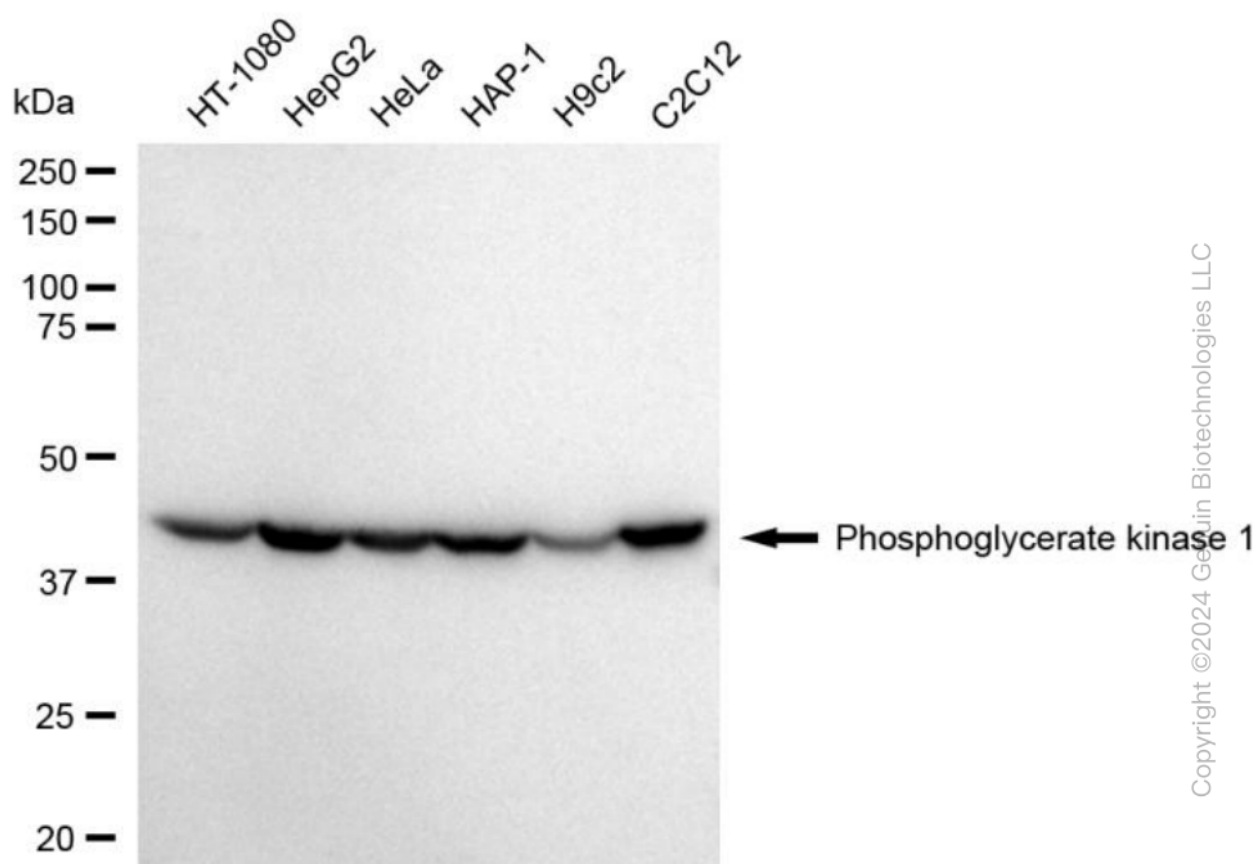
ORDERS

SALES@GENUINBIOTECH.COM
FAX: +1-540-855-7041

WWW.GENUINBIOTECH.COM

KD-Validated Anti-Phosphoglycerate Kinase 1 Mouse Monoclonal Antibody

PAGE 4



Copyright ©2024 Genuin Biotechnologies LLC

Western blotting analysis using anti-Phosphoglycerate kinase 1 antibody (Cat#62871). Total cell lysates (30 µg) from various cell lines were loaded and separated by SDS-PAGE. The blot was incubated with anti-Phosphoglycerate kinase 1 antibody (Cat#62871, 1:5,000) and HRP-conjugated goat anti-mouse secondary antibody (Cat#101, 1:20,000) respectively. Image was developed using FeQ™ ECL Substrate Kit (Cat#226).

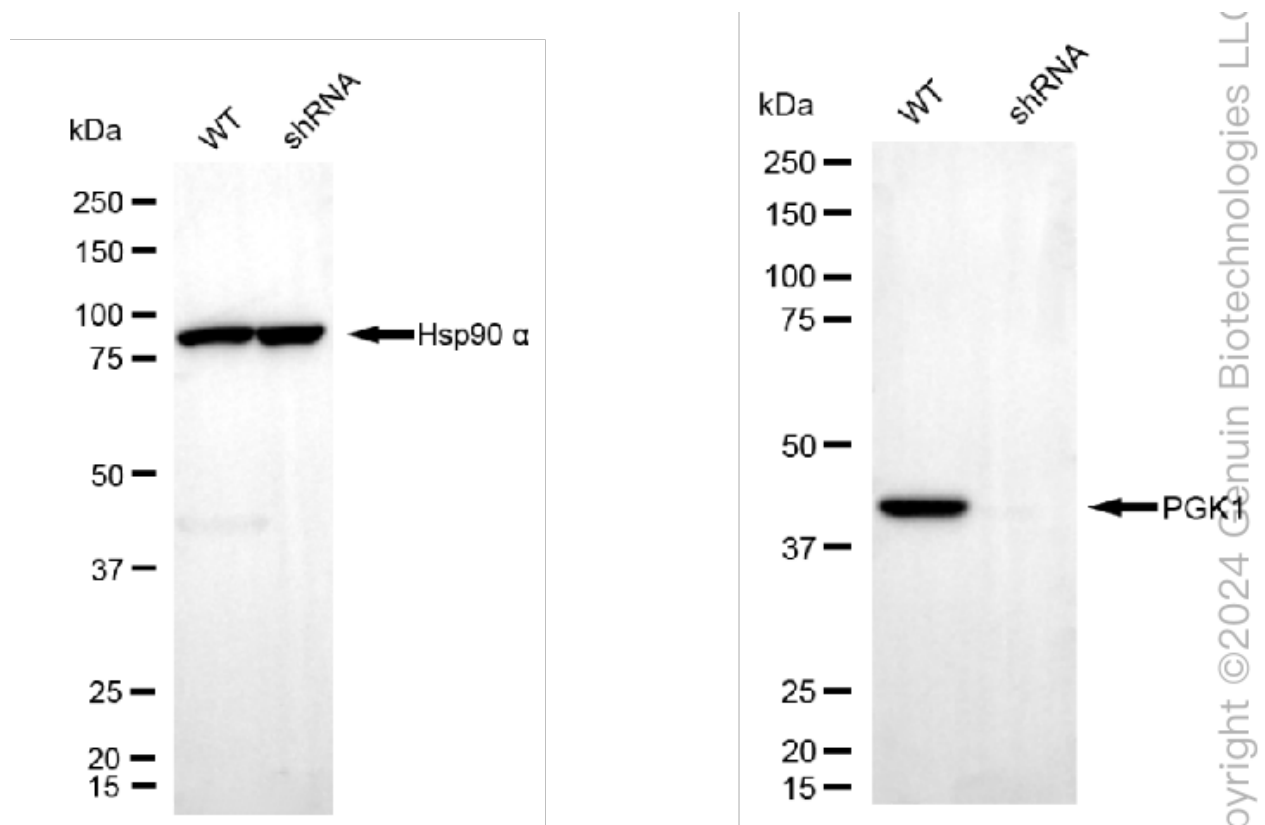
SUPPORT

SUPPORT@GENUINBIOTECH.COM
TEL: +1-540-855-7041

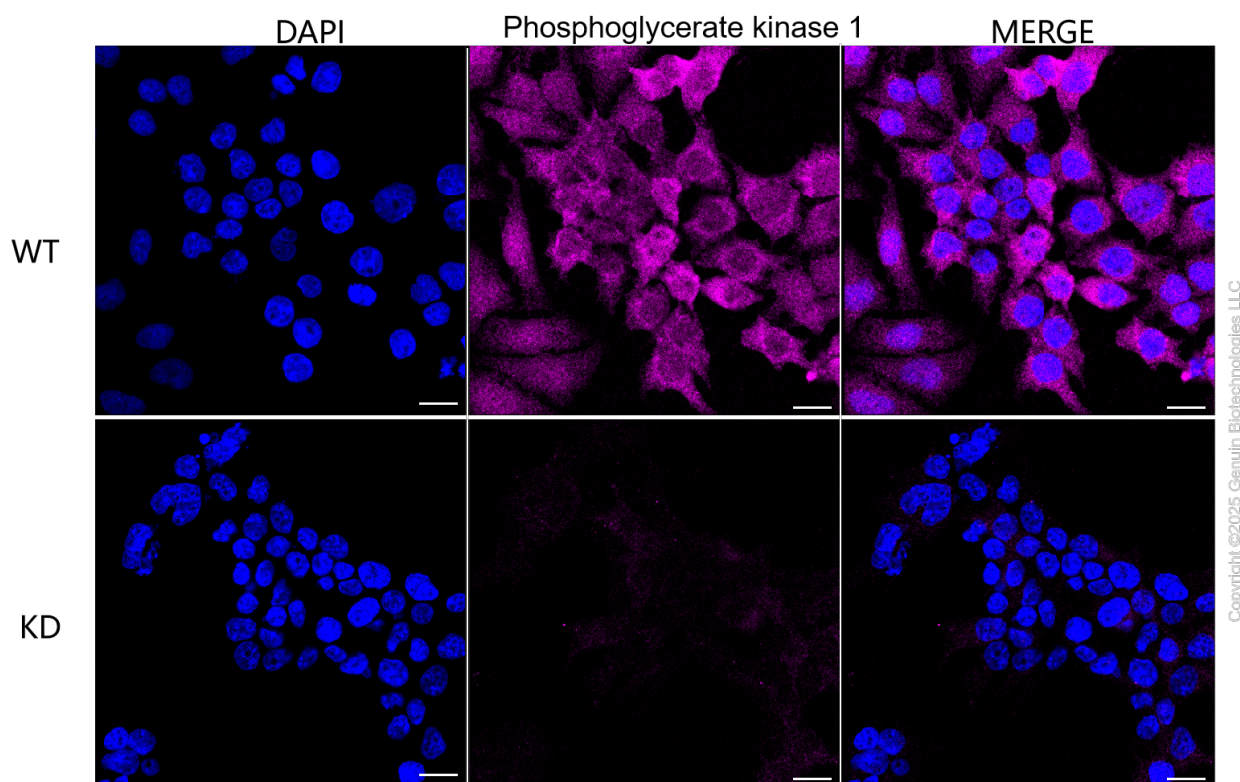
ORDERS

SALES@GENUINBIOTECH.COM
FAX: +1-540-855-7041

WWW.GENUINBIOTECH.COM



Western blotting analysis using anti-phosphoglycerate kinase 1 antibody (Cat#62871). Phosphoglycerate kinase 1 expression in wild-type (WT) and phosphoglycerate kinase 1 (PGK1) shRNA knockdown (KD) HeLa cells with 20 µg of total cell lysates. Hsp90 α serves as a loading control. The blot was incubated with anti-phosphoglycerate kinase 1 antibody (Cat#62871, 1:5,000) and HRP-conjugated goat anti-mouse secondary antibody (Cat#101, 1:20,000) respectively. Image was developed using NaQ™ ECL Substrate Kit (Cat#716).



Immunocytochemical staining of HeLa cells using anti-Phosphoglycerate kinase 1 antibody (Cat#62871, 1:1,000), Top panel: wild-type (WT); Bottom panel: Oxoglutarate receptor 1 shRNA knockdown (KD). Nuclei were stained blue with DAPI; Oxoglutarate receptor 1 was stained magenta with Alexa Fluor® 647. Scale bar, 20 μ m. Permeabilization: Triton.