

# KD-Validated Anti-Adenylate Kinase 1 Mouse Monoclonal Antibody



**Catalog #: 62872**

## Aliases

AK1; Adenylate Kinase 1; Adenylate Monophosphate Kinase; Adenylate Kinase Isoenzyme 1; ATP-AMP Transphosphorylase 1; ATP:AMP Phosphotransferase; EC 2.7.4.3; Myokinase; Testis Secretory Sperm Binding Protein Li 58j; Epididymis Secretory Sperm Binding Protein; EC 2.7.4.10; EC 2.7.4.6; HTL-S-58j; EC 2.7.4; AK 1

## Background

Gene Name: AK1

NCBI Gene Entry: [203](#)

UniProt Entry: [P00568](#)

## Application Information

Molecular Weight: Predicted, 45 kDa; observed, 44 kDa

Clonality: Mouse monoclonal antibody

Clone ID: 24GB2940

Species Reactivity: Human

Applications Tested: Western blotting (WB), immunocytochemistry (IC)

## Immunogen

Recombinant protein of human Adenylate Kinase 1

## Isotype

Mouse IgG1 kappa

## Storage Buffer

Supplied in PBS (pH 7.4) containing 50% glycerol, and 0.02% sodium azide.

## Storage

Store at -20 °C for one year.

## Recommended Dilutions

Western Blotting (WB): 1:1,000-1:5,000

Immunocytochemistry (IC): 1:100-1:1,000

**Note:** This product is for research use only.

---

### SUPPORT

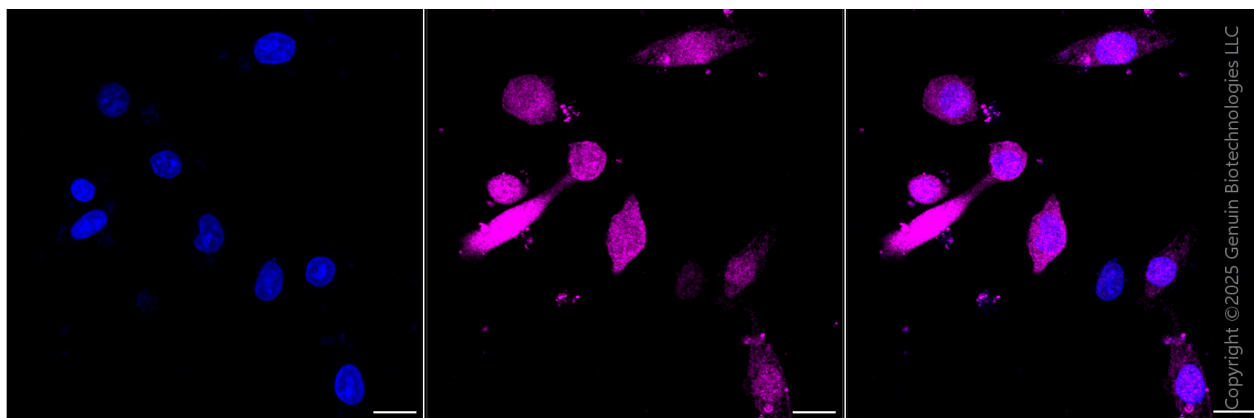
SUPPORT@GENUINBIOTECH.COM  
TEL: +1-540-855-7041

### ORDERS

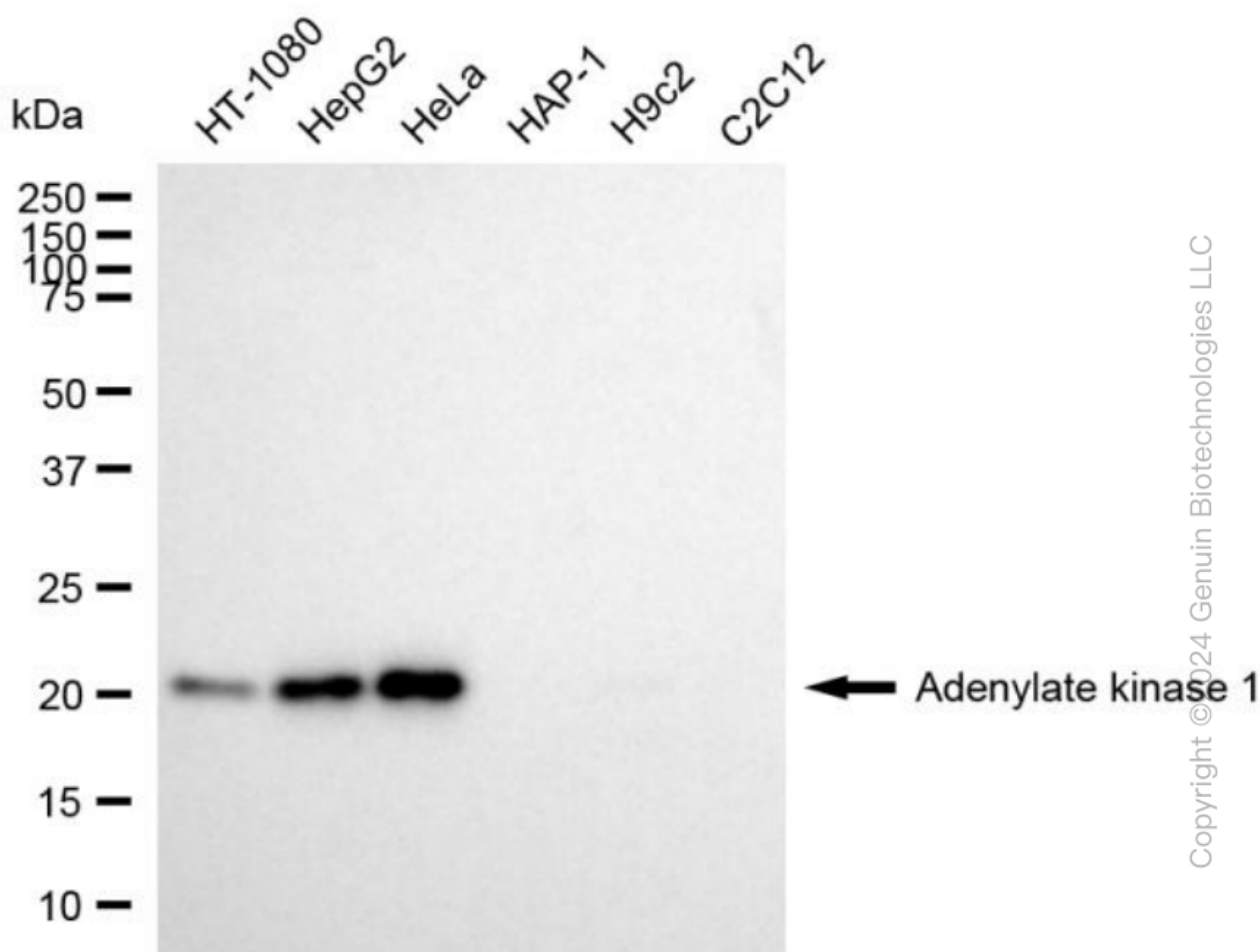
SALES@GENUINBIOTECH.COM  
FAX: +1-540-855-7041

[WWW.GENUINBIOTECH.COM](http://WWW.GENUINBIOTECH.COM)

## Validation Data



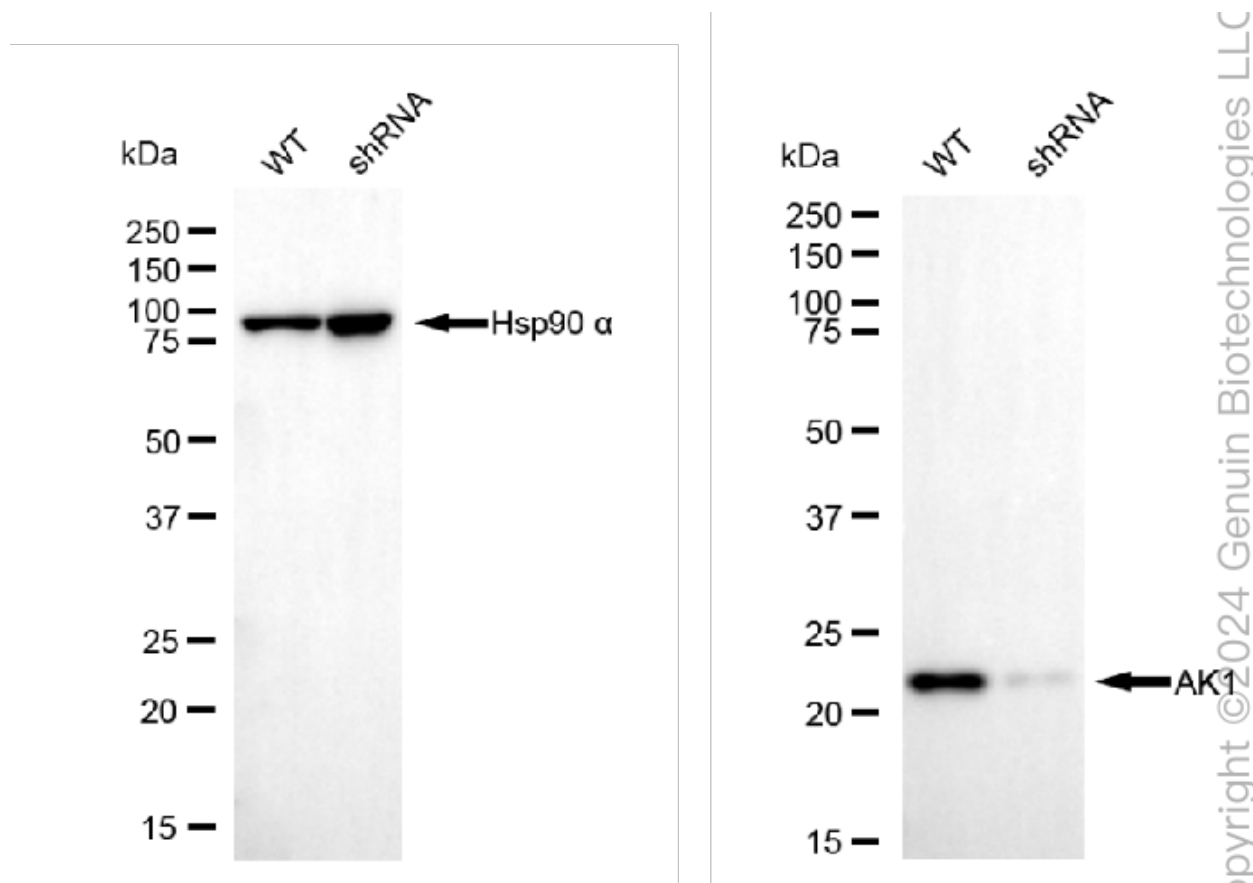
Immunocytochemical staining of HepG2 cells with anti-Adenylate kinase 1 antibody(Cat#62872, 1:1,000) . Nuclei were stained blue with DAPI; Adenylate kinase 1 was stained magenta with Alexa Fluor® 647. Images were taken using Leica stellaris 5. Protein abundance based on laser Intensity and smart gain: Medium. Scale bar, 20  $\mu$ m.



## KD-Validated Anti-Adenylate Kinase 1 Mouse Monoclonal Antibody

PAGE 3

Western blotting analysis using anti-Adenylate kinase 1 antibody (Cat#62872). Total cell lysates (30  $\mu$ g) from various cell lines were loaded and separated by SDS-PAGE. The blot was incubated with anti-Adenylate kinase 1 antibody (Cat#62872, 1:5,000) and HRP-conjugated goat anti-mouse secondary antibody (Cat#101, 1:20,000) respectively. Image was developed using FeQ™ ECL Substrate Kit (Cat#226).



Western blotting analysis using anti-adenylate kinase 1 antibody (Cat#62872). Adenylate kinase 1 expression in wild-type (WT) and adenylate kinase 1 (AK1) shRNA knockdown (KD) HeLa cells with 20  $\mu$ g of total cell lysates. Hsp90  $\alpha$  serves as a loading control. The blot was incubated with anti-adenylate kinase 1 antibody (Cat#62872, 1:5,000) and HRP-conjugated goat anti-mouse secondary antibody (Cat#101, 1:20,000) respectively. Image was developed using NaQ™ ECL Substrate Kit (Cat#716).

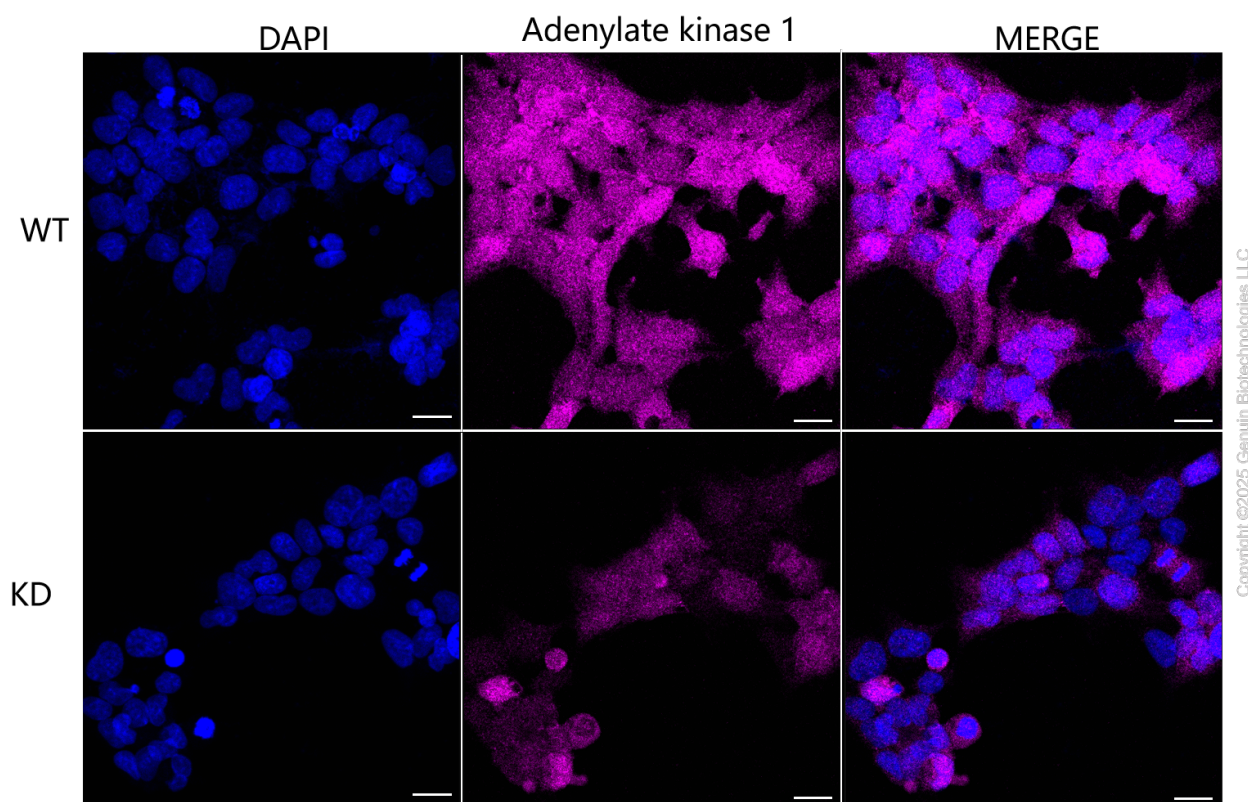
### SUPPORT

SUPPORT@GENUINBIOTECH.COM  
TEL: +1-540-855-7041

### ORDERS

SALES@GENUINBIOTECH.COM  
FAX: +1-540-855-7041

[WWW.GENUINBIOTECH.COM](http://WWW.GENUINBIOTECH.COM)



Immunocytochemical staining of HepG2 cells with anti-Adenylate kinase 1 antibody(Cat#62872, 1:1,000) . Nuclei were stained blue with DAPI; Adenylate kinase 1 was stained magenta with Alexa Fluor® 647. Images were taken using Leica stellaris 5. Protein abundance based on laser Intensity and smart gain: Medium. Scale bar, 20  $\mu$ m.