

# KD-Validated Anti-Superoxide Dismutase 2 Mouse Monoclonal Antibody



**Catalog #: 62883**

## Aliases

SOD2; Superoxide Dismutase 2; GCInc1; MnSOD; IPOB; GC1; Superoxide Dismutase [Mn], Mitochondrial; Superoxide Dismutase 2, Mitochondrial; EC 1.15.1.1; Epididymis Secretory Sperm Binding Protein; Manganese-Containing Superoxide Dismutase; Gastric Cancer-Associated LncRNA 1; Gastric Cancer-Associated LncRNA 1; Manganese Superoxide Dismutase; Mangano-Superoxide Dismutase; Mn Superoxide Dismutase; Indophenoloxidase B; Mn-SOD; IPO-B; MVCD6

## Background

Gene Name: SOD2

NCBI Gene Entry: [6648](#)

UniProt Entry: [P04179](#)

## Application Information

Molecular Weight: Predicted, 25 kDa; observed, 22 kDa

Clonality: Mouse monoclonal antibody

Clone ID: 24GB2990

Species Reactivity: Human, mouse, rat

Applications Tested: Western blotting (WB)

## Immunogen

Recombinant protein of human SOD2

## Isotype

Mouse IgG1 kappa

## Storage Buffer

Supplied in PBS (pH 7.4) containing 50% glycerol, and 0.02% sodium azide.

## Storage

Store at -20 °C for one year.

## Recommended Dilutions

Western Blotting (WB): 1:1,000-1:5,000

---

### SUPPORT

SUPPORT@GENUINBIOTECH.COM  
TEL: +1-540-855-7041

### ORDERS

SALES@GENUINBIOTECH.COM  
FAX: +1-540-855-7041

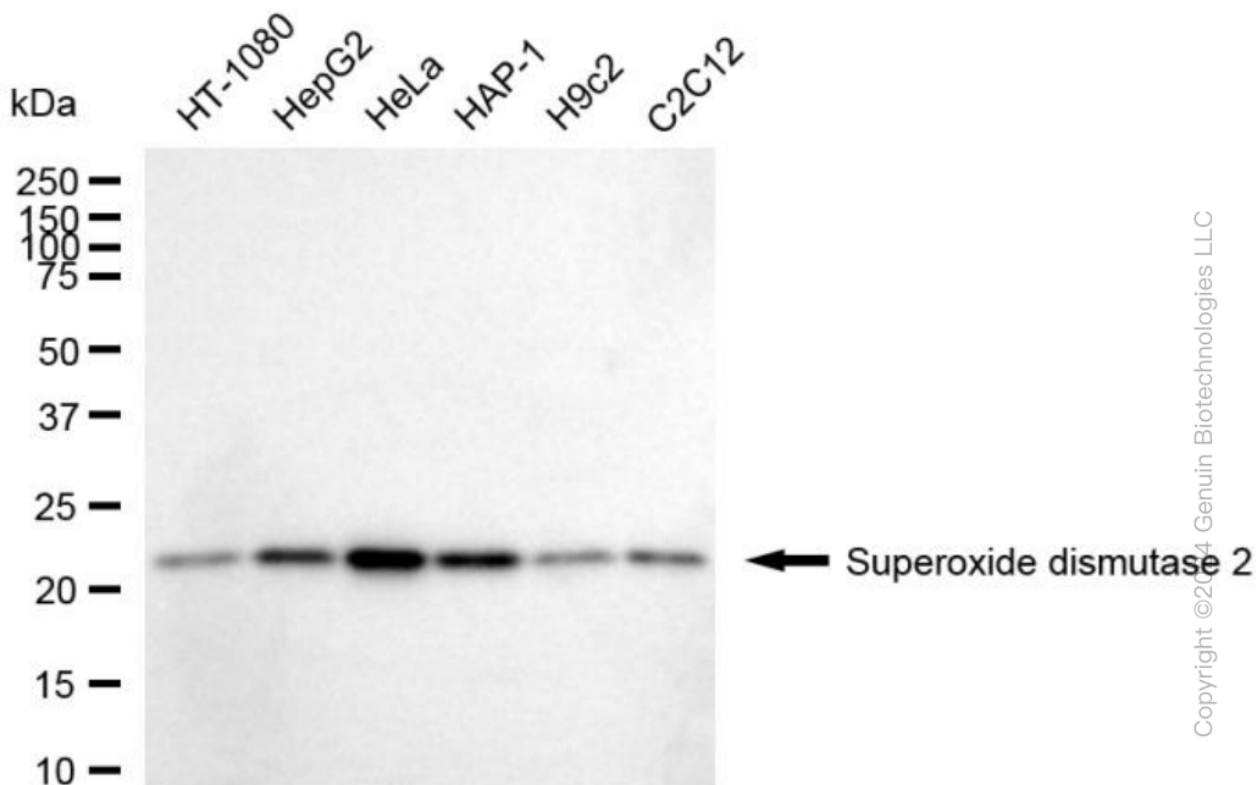
[WWW.GENUINBIOTECH.COM](http://WWW.GENUINBIOTECH.COM)

## KD-Validated Anti-Superoxide Dismutase 2 Mouse Monoclonal Antibody

PAGE 2

**Note:** This product is for research use only.

### Validation Data



Western blotting analysis using anti-Superoxide dismutase 2 antibody (Cat#62883). Total cell lysates (30  $\mu$ g) from various cell lines were loaded and separated by SDS-PAGE. The blot was incubated with anti-Superoxide dismutase 2 antibody (Cat#62883, 1:5,000) and HRP-conjugated goat anti-mouse secondary antibody (Cat#101, 1:20,000) respectively. Image was developed using FeQ™ ECL Substrate Kit (Cat#226).

#### SUPPORT

SUPPORT@GENUINBIOTECH.COM  
TEL: +1-540-855-7041

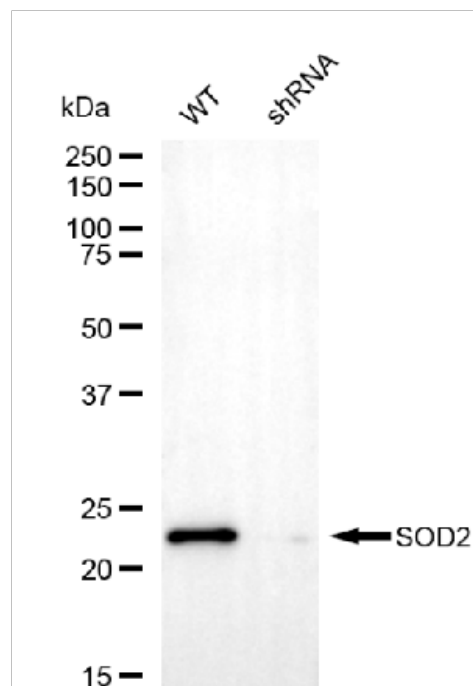
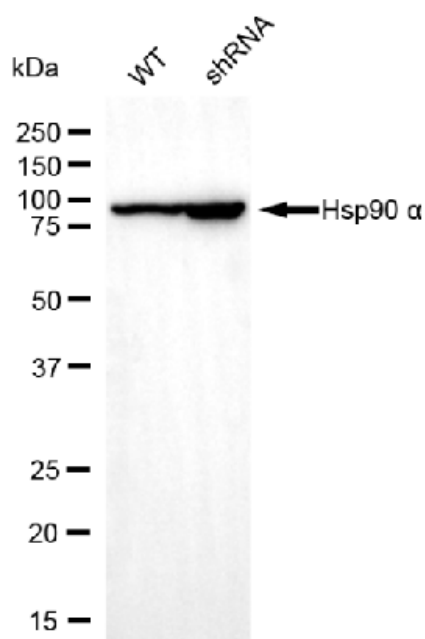
#### ORDERS

SALES@GENUINBIOTECH.COM  
FAX: +1-540-855-7041

WWW.GENUINBIOTECH.COM

## KD-Validated Anti-Superoxide Dismutase 2 Mouse Monoclonal Antibody

PAGE 3



copyright ©2024 Genuin Biotechnologies LLC

Western blotting analysis using anti-superoxide dismutase 2 antibody (Cat#62883). Superoxide dismutase 2 expression in wild-type (WT) and superoxide dismutase 2 (SOD2) shRNA knockdown (KD) HeLa cells with 20 µg of total cell lysates. Hsp90 α serves as a loading control. The blot was incubated with anti-superoxide dismutase 2 antibody (Cat#62883, 1:5,000) and HRP-conjugated goat anti-mouse secondary antibody (Cat#101, 1:20,000) respectively. Image was developed using NaQ™ ECL Substrate Kit (Cat#716).

### SUPPORT

SUPPORT@GENUINBIOTECH.COM  
TEL: +1-540-855-7041

### ORDERS

SALES@GENUINBIOTECH.COM  
FAX: +1-540-855-7041

[WWW.GENUINBIOTECH.COM](http://WWW.GENUINBIOTECH.COM)