

# KD-Validated Anti-Mitogen-Activated Protein Kinase 1 Recombinant Rabbit Monoclonal



**Catalog #: 62904**

## Aliases

MAPK1; Mitogen-Activated Protein Kinase 1; ERK2; Extracellular Signal Regulated Kinase 2; P41mapk; MAPK; PRKM1; PRKM2; ERK; Mitogen-Activated Protein Kinase 2; MAP Kinase 1; MAP Kinase 2; EC 2.7.11.24; P42-MAPK; MAPK 2; ERK-2; ERT1; Protein Tyrosine Kinase ERK2; MAP Kinase Isoform P42; EC 2.7.11; P42MAPK; MAPK 1; NS13; P38; P40; P41

## Background

Gene Name: MAPK1

NCBI Gene Entry: [5594](#)

UniProt Entry: [P28482](#)

## Application Information

Molecular Weight: Predicted, 41 kDa, observed, 41 kDa

Clonality: Rabbit monoclonal antibody

Clone ID: 24GB3095

Species Reactivity: Human, mouse, rat

Applications Tested: Western blotting (WB), flow cytometry (FCM), immunocytochemistry (IC)

## Immunogen

A synthesized peptide derived from human ERK2

## Isotype

Rabbit IgG

## Storage Buffer

Supplied in PBS (pH 7.4) containing 50% glycerol, and 0.02% sodium azide.

## Storage

Store at -20 °C for one year.

## Recommended Dilutions

Western Blotting (WB): 1:1,000-1:5,000

Flow Cytometry (FCM): 1:2,000

Immunocytochemistry (IC): 1:100-1:1,000

---

### SUPPORT

SUPPORT@GENUINBIOTECH.COM  
TEL: +1-540-855-7041

### ORDERS

SALES@GENUINBIOTECH.COM  
FAX: +1-540-855-7041

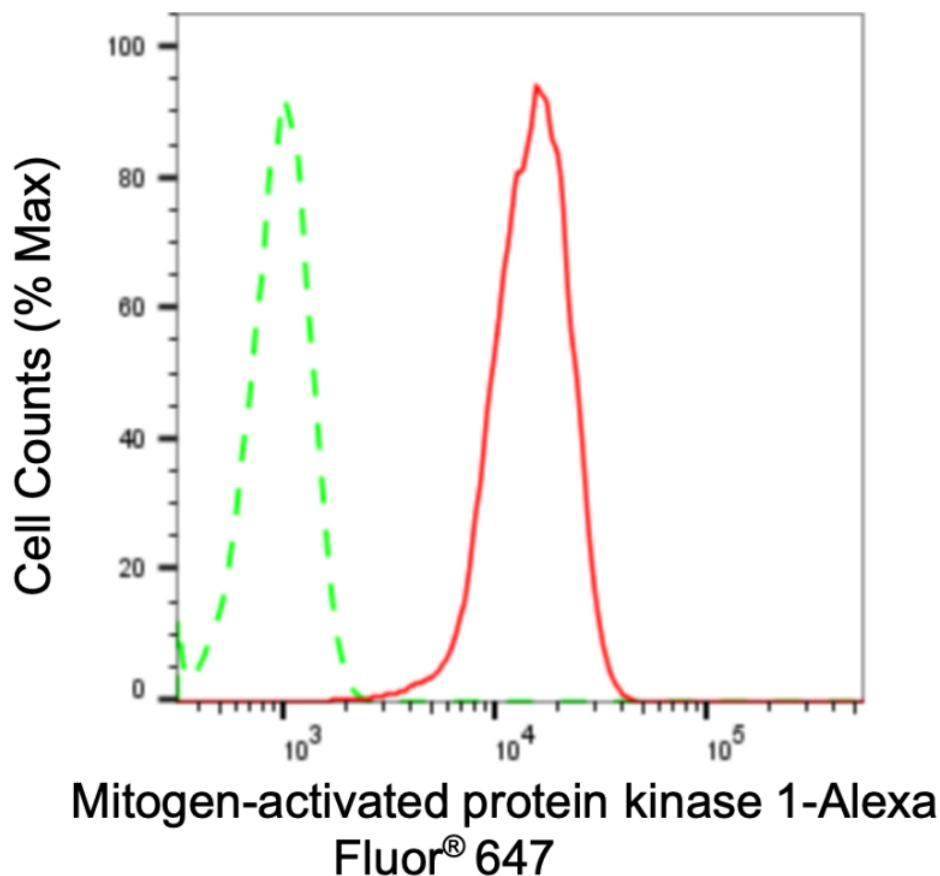
[WWW.GENUINBIOTECH.COM](http://WWW.GENUINBIOTECH.COM)

# KD-Validated Anti-Mitogen-Activated Protein Kinase 1 Recombinant Rabbit Monoclonal

PAGE 2

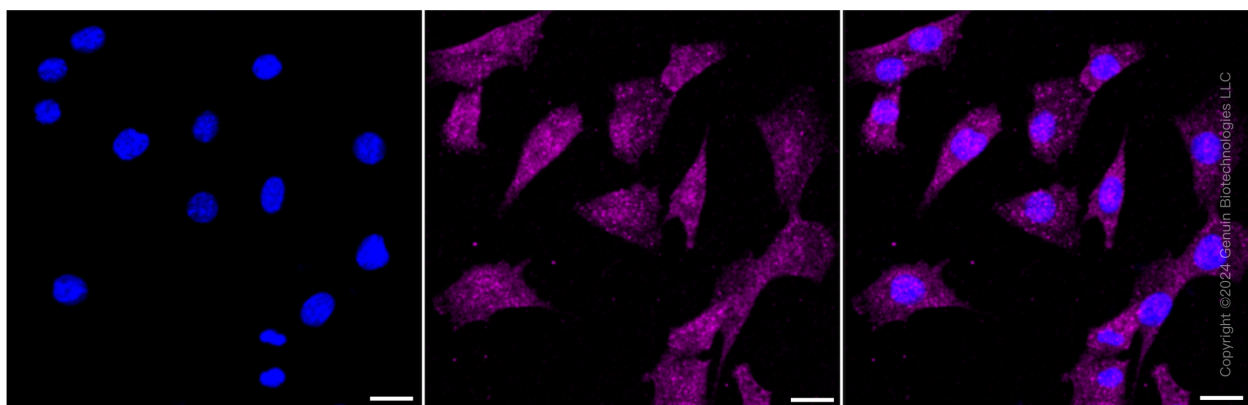
**Note:** This product is for research use only.

## Validation Data



Copyright ©2024 Genuin Biotechnologies LLC

Flow cytometric analysis of Mitogen-activated protein kinase 1 expression in C2C12 cells using anti-Mitogen-activated protein kinase 1 antibody (Cat#62904, 1:2,000). Green, isotype control; red, Mitogen-activated protein kinase 1.



Immunocytochemical staining of C2C12 cells with anti-Mitogen-activated protein kinase 1 antibody (Cat#62904, 1:1,000). Nuclei were stained blue with DAPI; Mitogen-activated protein

### SUPPORT

SUPPORT@GENUINBIOTECH.COM  
TEL: +1-540-855-7041

### ORDERS

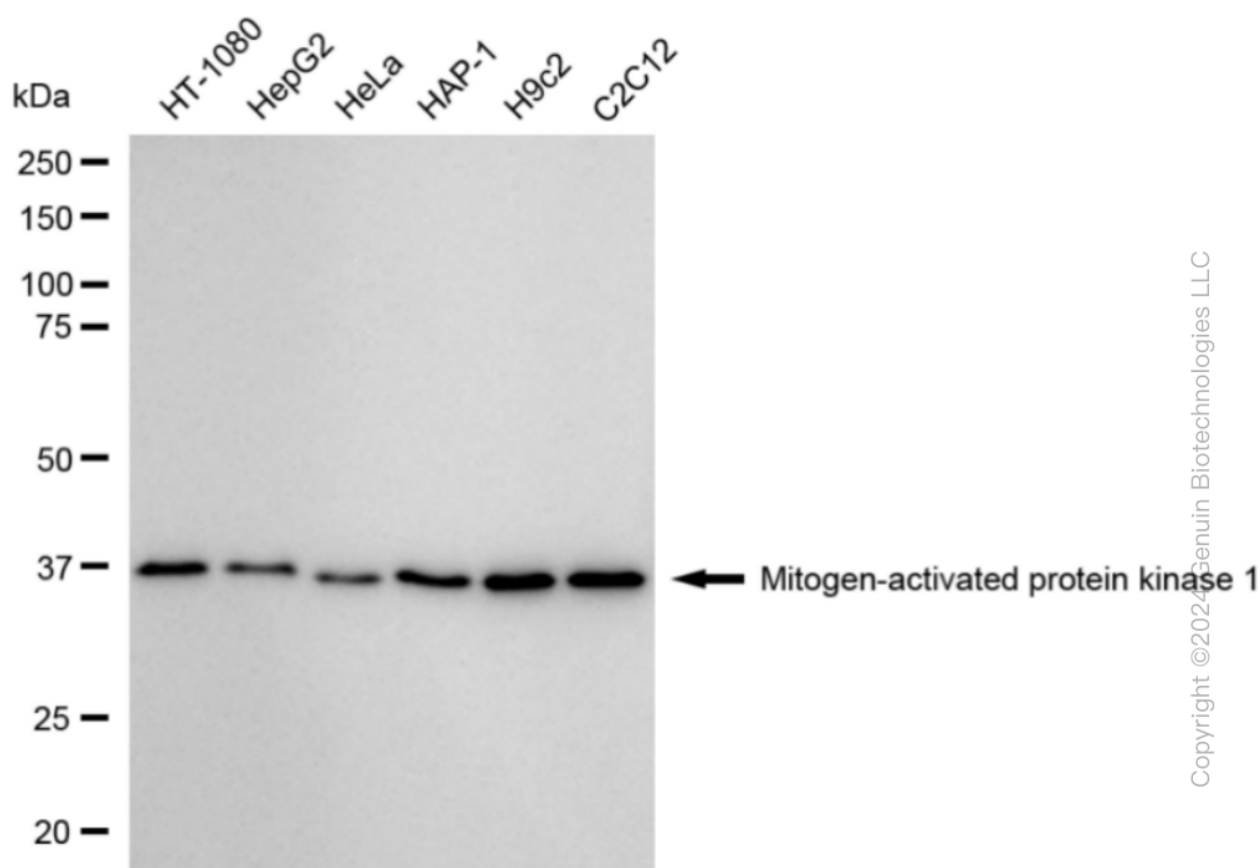
SALES@GENUINBIOTECH.COM  
FAX: +1-540-855-7041

WWW.GENUINBIOTECH.COM

## KD-Validated Anti-Mitogen-Activated Protein Kinase 1 Recombinant Rabbit Monoclonal

PAGE 3

kinase 1 was stained magenta with Alexa Fluor® 647. Images were taken using leica stellaris 5. Protein abundance based on laser intensity and smart gain: Medium. Scale bar: 20 µm.



Western blotting analysis using anti-Mitogen-activated protein kinase 1 antibody (Cat#62904). Total cell lysates (30 µg) from various cell lines were loaded and separated by SDS-PAGE. The blot was incubated with anti-Mitogen-activated protein kinase 1 antibody (Cat#62904, 1:5,000) and HRP-conjugated goat anti-rabbit secondary antibody (Cat#201, 1:20,000) respectively. Image was developed using FeQ™ ECL Substrate Kit (Cat#226).

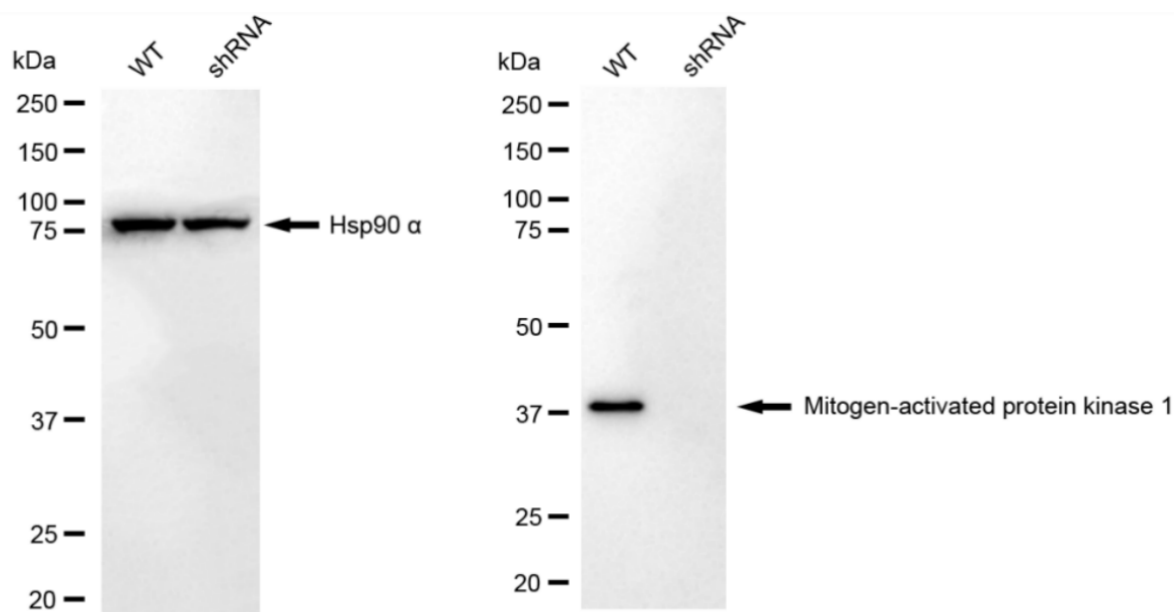
### SUPPORT

SUPPORT@GENUINBIOTECH.COM  
TEL: +1-540-855-7041

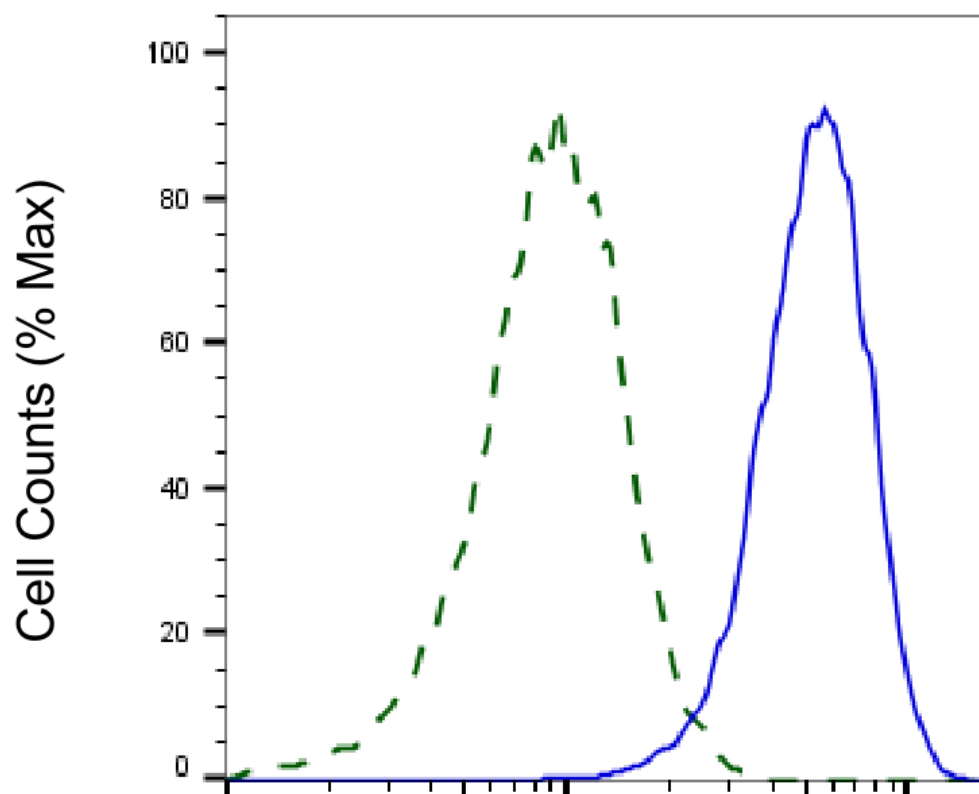
### ORDERS

SALES@GENUINBIOTECH.COM  
FAX: +1-540-855-7041

WWW.GENUINBIOTECH.COM



Western blotting analysis using anti-mitogen-activated protein kinase 1 antibody (Cat#62904). Mitogen-activated protein kinase 1 expression in wild-type (WT) and mitogen-activated protein kinase 1 (MAPK1) shRNA knockdown (KD) HeLa cells with 20 µg of total cell lysates. Hsp90 α serves as a loading control. The blot was incubated with anti-mitogen-activated protein kinase 1 antibody (Cat#62904, 1:5,000) and HRP-conjugated goat anti-rabbit secondary antibody (Cat#201, 1:20,000) respectively. Image was developed using NaQ™ ECL Substrate Kit (Cat#716).



Copyright ©2025 Genuin Biotechnologies LLC

## Mitogen-activated protein kinase 1-Alexa Fluor® 647

Validation of Mitogen-activated protein kinase 1 knockdown using flow cytometry. Wild-type(WT, Blue) and knockdown(KD, Green) HeLa cells were stained with anti-Mitogen-activated protein kinase 1 antibody (Cat#62904, 1:2,000) and analyzed using BD flow cytometer.