

KD-Validated Anti-CD46 Recombinant Rabbit Monoclonal Antibody



Catalog #: 63044

Aliases

CD46; CD46 Molecule; TLX; TRA2.10; MIC10; MCP; Membrane Cofactor Protein (CD46, Trophoblast-Lymphocyte Cross-Reactive Antigen); Antigen Identified By Monoclonal Antibody TRA-2-10; Trophoblast-Lymphocyte Cross-Reactive Antigen; CD46 Molecule, Complement Regulatory Protein; CD46 Antigen, Complement Regulatory Protein; Trophoblast Leukocyte Common Antigen; Membrane Cofactor Protein; MGC26544; Complement Membrane Cofactor Protein; Trophoblast Leukocyte Common Antigen; Measles Virus Receptor; CD46 Antigen; AHUS2

Background

Gene Name: CD46

NCBI Gene Entry: [4179](#)

UniProt Entry: [P15529](#)

Application Information

Molecular Weight: Predicted, 44 kDa, observed, 50-70 kDa

Clonality: Rabbit monoclonal antibody

Clone ID: 23GB5720

Species Reactivity: Human

Applications Tested: Western blotting (WB), flow cytometry (FCM), immunocytochemistry (IC)

Immunogen

A synthesized peptide derived from human CD46

Isotype

Rabbit IgG

Storage Buffer

Supplied in PBS (pH 7.4) containing 50% glycerol, and 0.02% sodium azide.

Storage

Store at -20 °C for one year.

Recommended Dilutions

Western Blotting (WB): 1:1,000-1:5,000

Flow Cytometry (FCM): 1:2,000

SUPPORT

SUPPORT@GENUINBIOTECH.COM
TEL: +1-540-855-7041

ORDERS

SALES@GENUINBIOTECH.COM
FAX: +1-540-855-7041

WWW.GENUINBIOTECH.COM

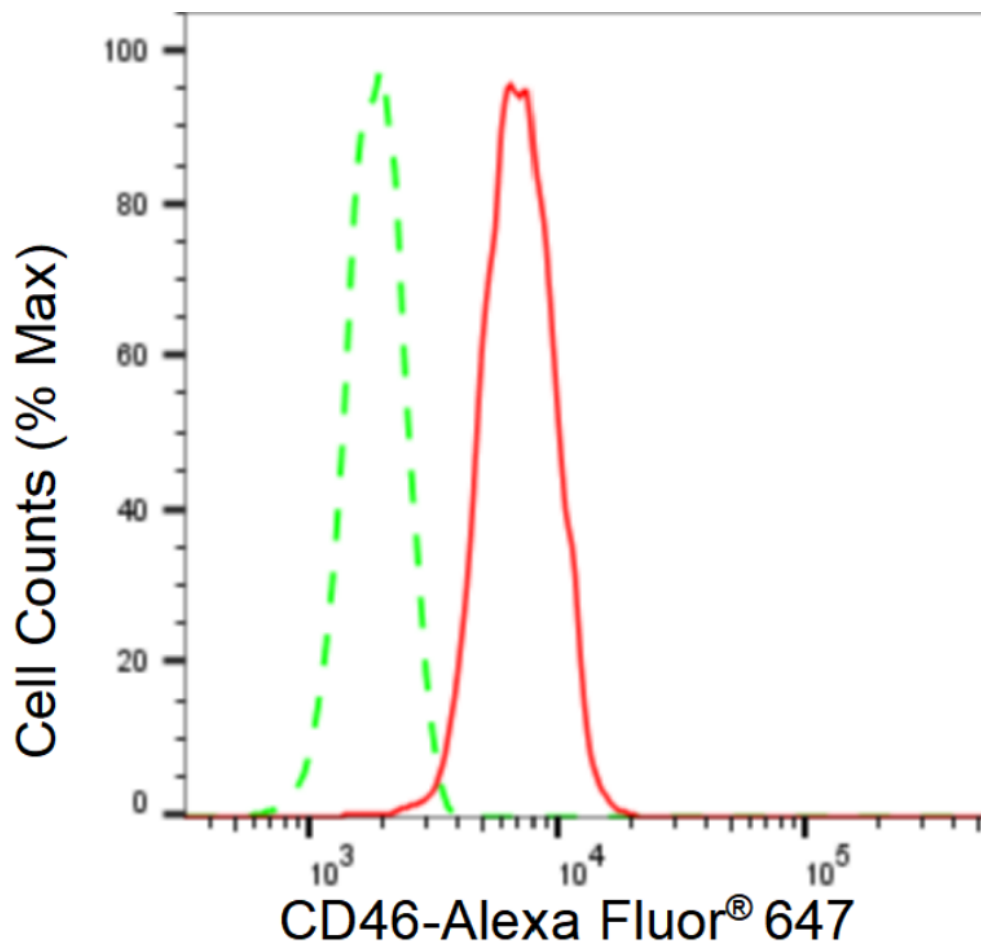
KD-Validated Anti-CD46 Recombinant Rabbit Monoclonal Antibody

PAGE 2

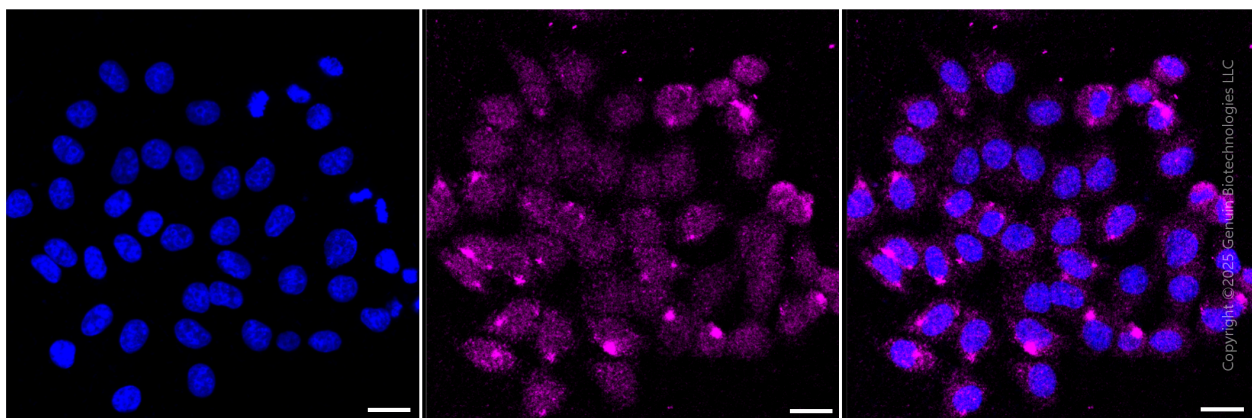
Immunocytochemistry (IC): 1:100-1:1,000

Note: This product is for research use only.

Validation Data



Flow cytometric analysis of CD46 expression in HepG2 cells using CD46 antibody (Cat#63044, 1:2,000). Green, isotype control; red, CD46.



SUPPORT

SUPPORT@GENUINBIOTECH.COM
TEL: +1-540-855-7041

ORDERS

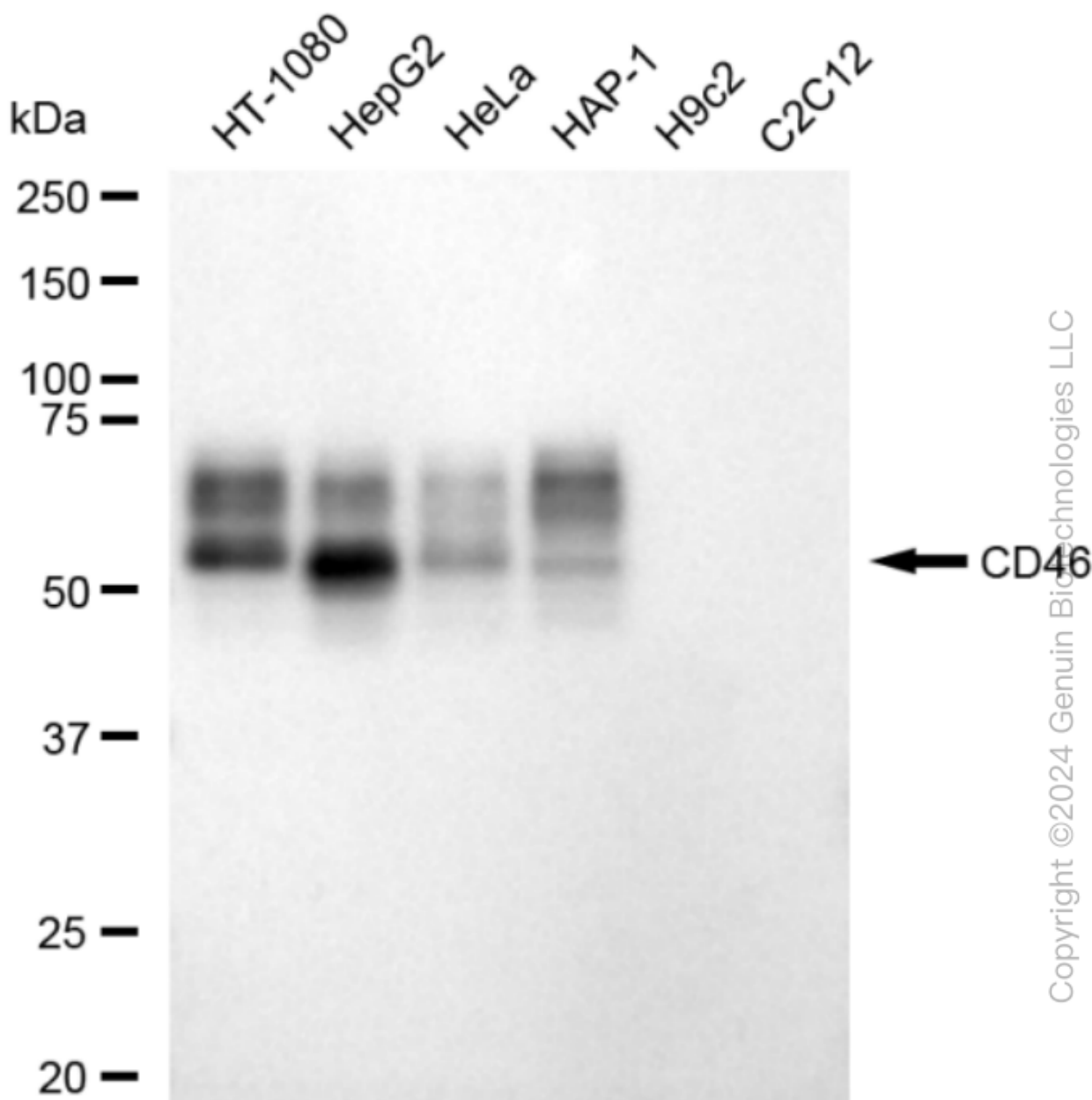
SALES@GENUINBIOTECH.COM
FAX: +1-540-855-7041

WWW.GENUINBIOTECH.COM

KD-Validated Anti-CD46 Recombinant Rabbit Monoclonal Antibody

PAGE 3

Immunocytochemical staining of HepG2 cells with anti-CD46 antibody (Cat#63044, 1:1000) . Nuclei were stained blue with DAPI; CD46 was stained magenta with Alexa Fluor® 647. Images were taken using Leica stellaris 5. Protein abundance based on laser Intensity and smart gain: Medium. Scale bar, 20 μ m.



Western blotting analysis using anti-CD46 antibody (Cat#63044). Total cell lysates (30 μ g) from various cell lines were loaded and separated by SDS-PAGE. The blot was incubated with anti-CD46 antibody (Cat#63044, 1:5,000) and HRP-conjugated goat anti-rabbit secondary antibody (Cat#201, 1:20,000) respectively. Image was developed using FeQ™ ECL Substrate Kit (Cat#226).

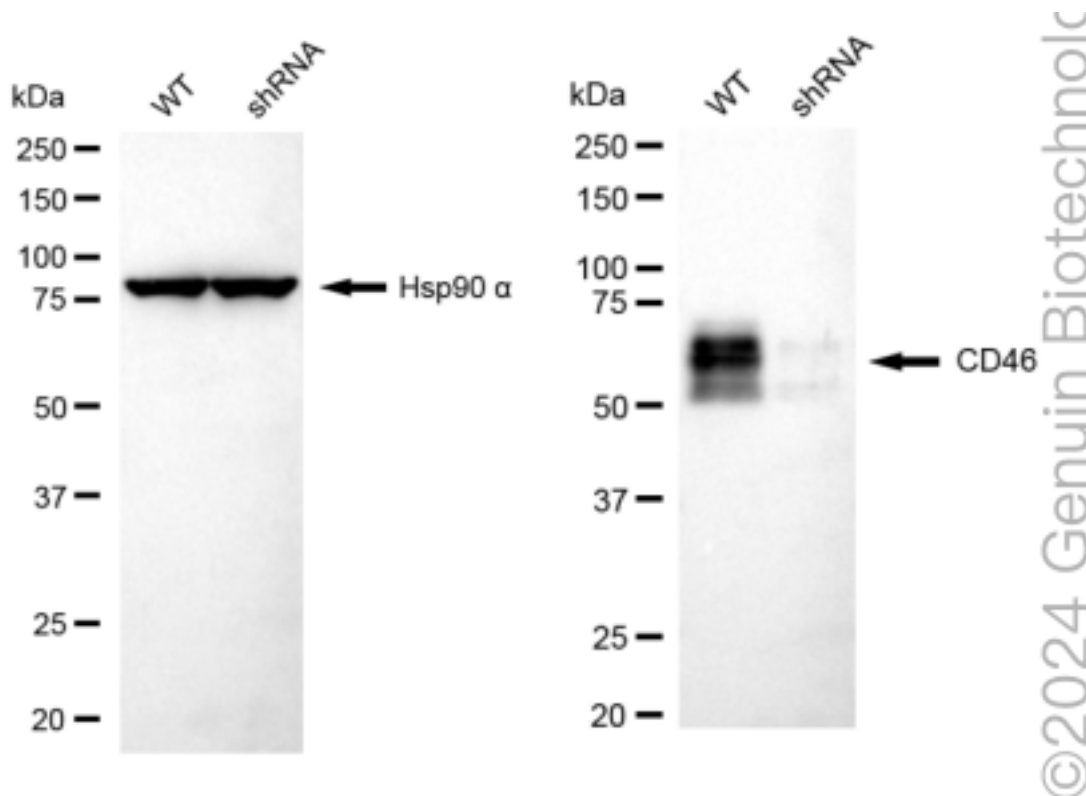
SUPPORT

SUPPORT@GENUINBIOTECH.COM
TEL: +1-540-855-7041

ORDERS

SALES@GENUINBIOTECH.COM
FAX: +1-540-855-7041

WWW.GENUINBIOTECH.COM



Western blotting analysis using anti-CD46 antibody (Cat#63044). CD46 expression in wild type (WT) and CD46 shRNA knockdown (KD) HeLa cells with 30 µg of total cell lysates. Hsp90 α serves as a loading control. The blot was incubated with anti-CD46 antibody (Cat#63044, 1:5,000) and HRP-conjugated goat anti-rabbit secondary antibody (Cat#201, 1:20,000) respectively. Image was developed using FeQ™ ECL Substrate Kit (Cat#226).