

KD-Validated Anti-Phospho-eIF2 alpha (Ser51) Recombinant Rabbit Monoclonal Antibody



Catalog #: 63068

Aliases

EIF2S1; Eukaryotic Translation Initiation Factor 2 Subunit Alpha;
EIF-2alpha; EIF2A; Eukaryotic Translation Initiation Factor 2, Subunit 1 Alpha, 35kDa;
Eukaryotic Translation Initiation Factor 2 Subunit 1; EIF-2-Alpha; EIF2-Alpha; EIF-2A; EIF2;
Eukaryotic Translation Initiation Factor 2, Subunit 1 (Alpha, 35kD); EIF-2

Background

Gene Name: EIF2S1
NCBI Gene Entry: [1965](#)
UniProt Entry: [P05198](#)

Application Information

Molecular Weight: Predicted, 36 kDa, observed, 36 kDa
Clonality: Rabbit monoclonal antibody
Clone ID: 24GB3905
Species Reactivity: Human, mouse, rat
Applications Tested: Western blotting (WB), flow cytometry (FCM), immunocytochemistry (IC)

Immunogen

A synthesized peptide derived from human Phospho-eIF2 alpha (Ser51)

Isotype

Rabbit IgG

Storage Buffer

Supplied in PBS (pH 7.4) containing 50% glycerol, and 0.02% sodium azide.

Storage

Store at -20 °C for one year.

Recommended Dilutions

Western Blotting (WB): 1:1,000-1:5,000
Flow Cytometry (FCM): 1:2,000
Immunocytochemistry (IC): 1:100-1:1,000

SUPPORT

SUPPORT@GENUINBIOTECH.COM
TEL: +1-540-855-7041

ORDERS

SALES@GENUINBIOTECH.COM
FAX: +1-540-855-7041

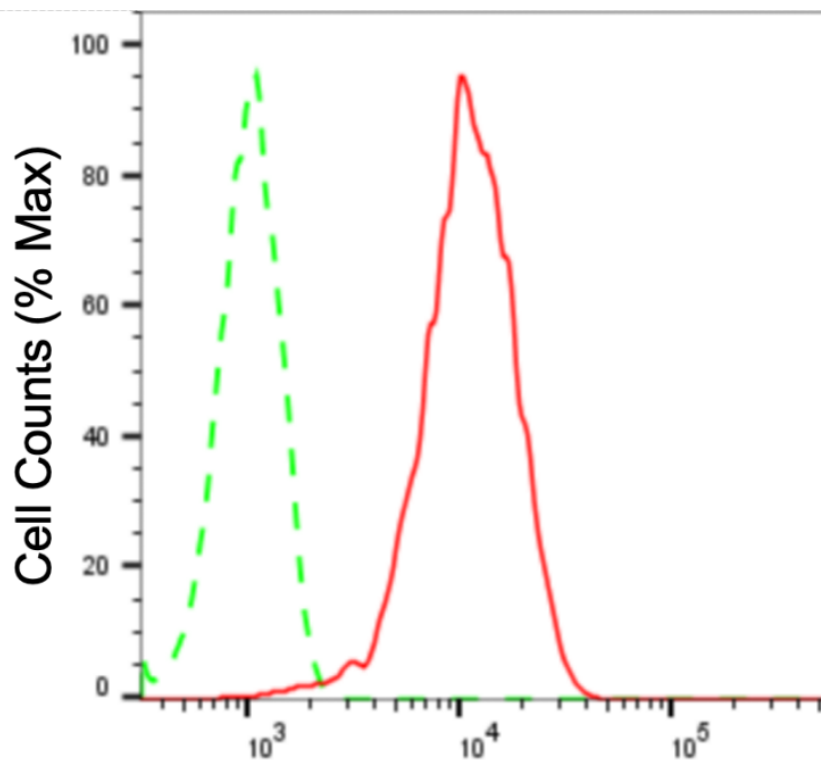
WWW.GENUINBIOTECH.COM

KD-Validated Anti-Phospho-eIF2 alpha (Ser51) Recombinant Rabbit Monoclonal Antibody

PAGE 2

Note: This product is for research use only.

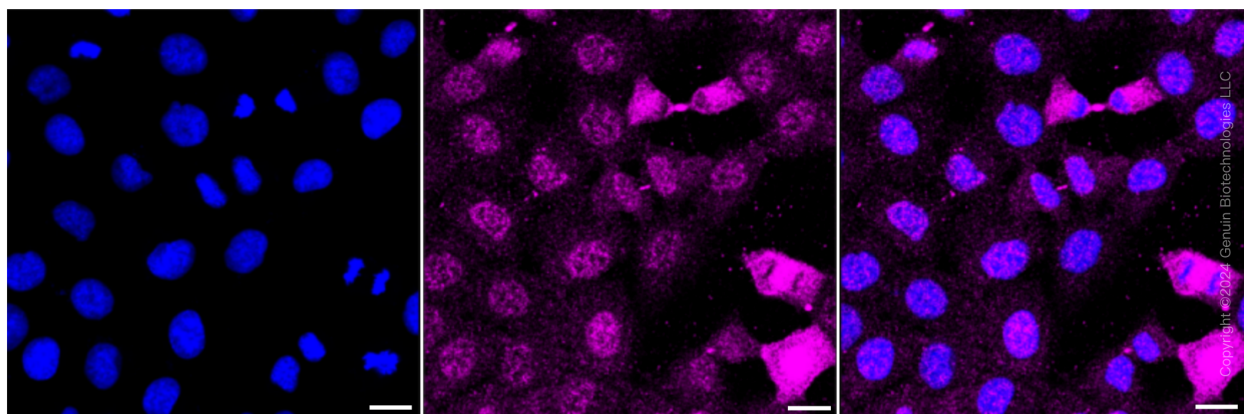
Validation Data



Copyright ©2024 Genuin Biotechnologies LLC

Phospho-eIF2 alpha (Ser51)-Alexa Fluor® 647

Flow cytometric analysis of phospho-eIF2 alpha (Ser51) expression in HT-1080 cells using anti-phospho-eIF2 alpha (Ser51) antibody (Cat#63068, 1:2,000). Green, isotype control; red, phospho-eIF2 alpha (Ser51).



Copyright ©2024 Genuin Biotechnologies LLC

Immunocytochemical staining of HT-1080 cells with anti-Phospho-eIF2 alpha (Ser51) antibody (Cat#63068, 1:1,000). Nuclei were stained blue with DAPI; Phospho-eIF2 alpha (Ser51) was stained magenta with Alexa Fluor® 647. Images were taken using Leica stellaris 5. Protein

SUPPORT

SUPPORT@GENUINBIOTECH.COM
TEL: +1-540-855-7041

ORDERS

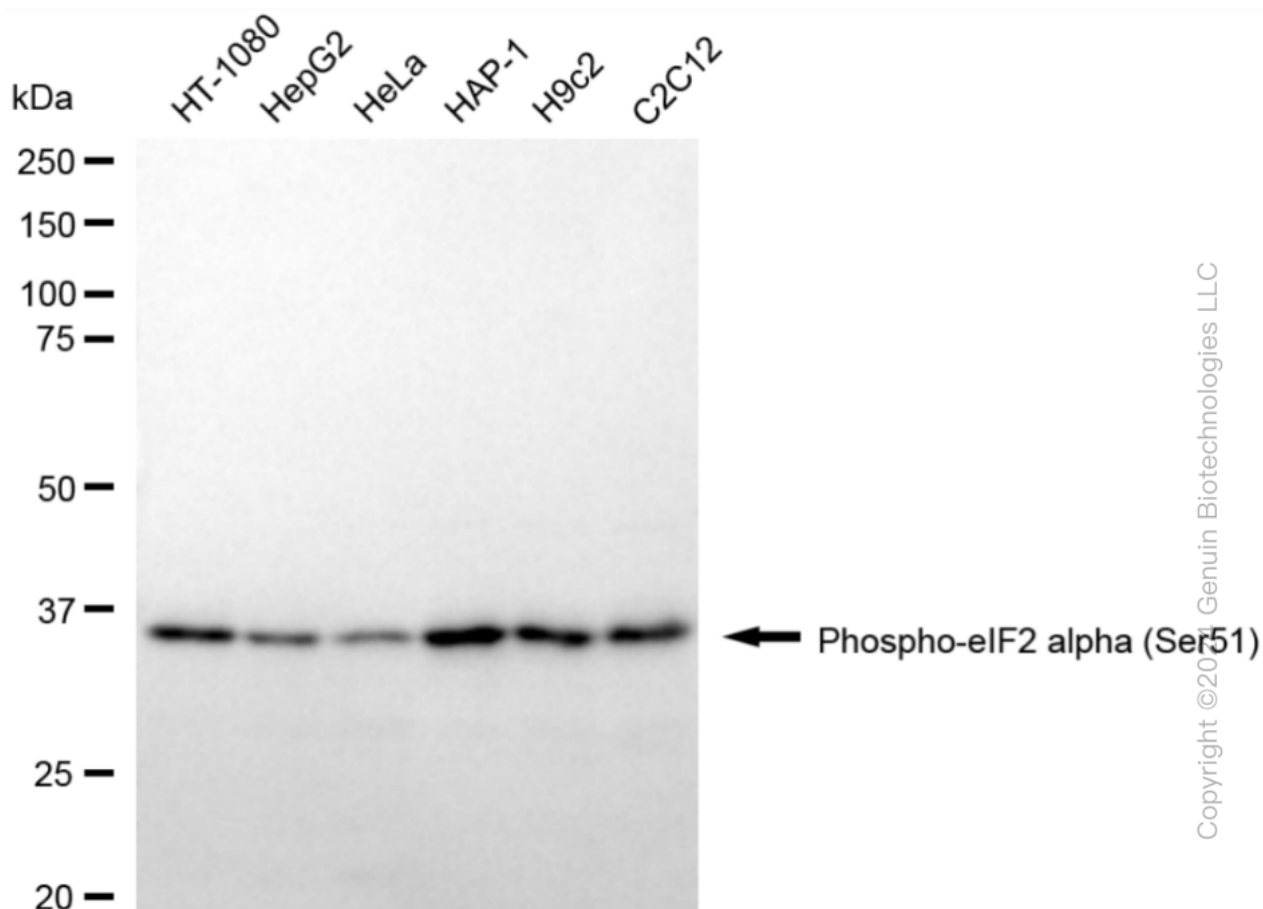
SALES@GENUINBIOTECH.COM
FAX: +1-540-855-7041

WWW.GENUINBIOTECH.COM

KD-Validated Anti-Phospho-eIF2 alpha (Ser51) Recombinant Rabbit Monoclonal Antibody

PAGE 3

abundance based on laser Intensity and smart gain: Medium. Scale bar: 20 μ m.



Western blotting analysis using anti-phospho-eIF2 alpha (Ser51) antibody (Cat#63068). Total cell lysates (30 μ g) from various cell lines were loaded and separated by SDS-PAGE. The blot was incubated with anti-phospho-eIF2 alpha (Ser51) antibody (Cat#63068, 1:5,000) and HRP-conjugated goat anti-rabbit secondary antibody (Cat#201, 1:20,000) respectively. Image was developed using FeQ™ ECL Substrate Kit (Cat#226).

SUPPORT

SUPPORT@GENUINBIOTECH.COM
TEL: +1-540-855-7041

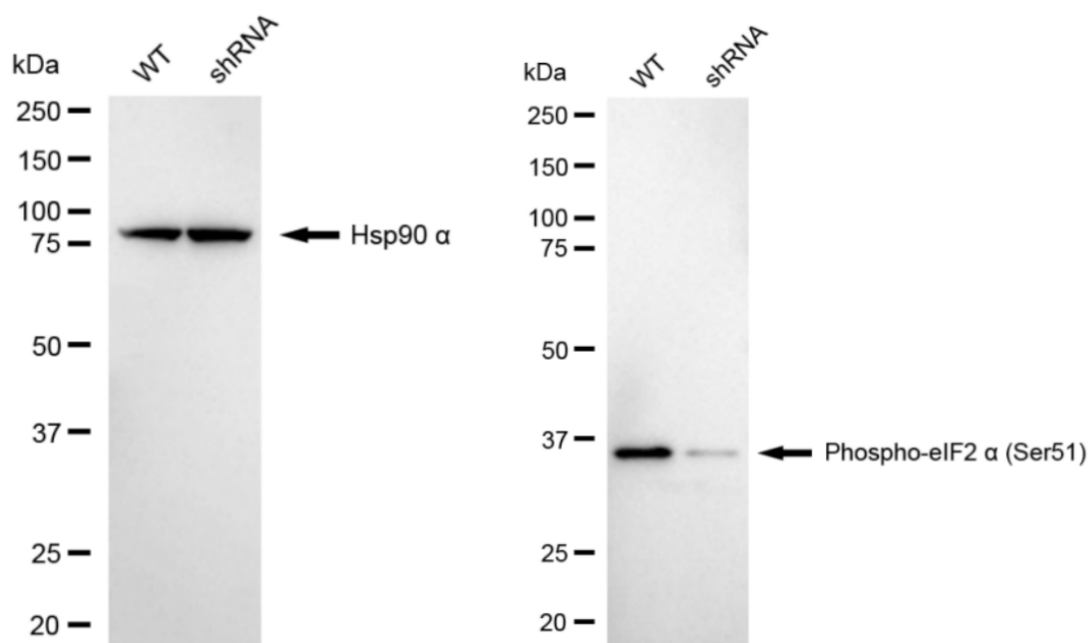
ORDERS

SALES@GENUINBIOTECH.COM
FAX: +1-540-855-7041

WWW.GENUINBIOTECH.COM

KD-Validated Anti-Phospho-eIF2 alpha (Ser51) Recombinant Rabbit Monoclonal Antibody

PAGE 4



Copyright ©2024 Genuin Biotechnologies LLC

Western blotting analysis using anti-phospho-eIF2 alpha (Ser51) antibody (Cat#63068). Phospho-eIF2 alpha (Ser51) expression in wild-type (WT) and EIF2S1 shRNA knockdown (KD) HeLa cells with 20 μ g of total cell lysates. Hsp90 α serves as a loading control. The blot was incubated with anti-phospho-eIF2 alpha (Ser51) antibody (Cat#63068, 1:5,000) and HRP-conjugated goat anti-rabbit secondary antibody (Cat#201, 1:20,000) respectively. Image was developed using NaQ™ ECL Substrate Kit (Cat#716). EIF2S1, eukaryotic translation initiation factor 2 subunit alpha.

SUPPORT

SUPPORT@GENUINBIOTECH.COM
TEL: +1-540-855-7041

ORDERS

SALES@GENUINBIOTECH.COM
FAX: +1-540-855-7041

WWW.GENUINBIOTECH.COM