

KD-Validated Anti-Serpin Family E Member 1 Recombinant Rabbit Monoclonal Antibody



Catalog #: 63098

Aliases

SERPINE1; Serpin Family E Member 1; PAI 2; PLANH1; PAI1; Serine (Or Cysteine) Proteinase Inhibitor, Clade E (Nexin, Plasminogen Activator Inhibitor Type 1), Member 1; Endothelial Plasminogen Activator Inhibitor; Plasminogen Activator Inhibitor 1; Serpin E1; PAI-1; Serpin Peptidase Inhibitor, Clade E (Nexin, Plasminogen Activator Inhibitor Type 1), Member 1; Plasminogen Activator Inhibitor, Type I

Background

Gene Name: SERPINE1

NCBI Gene Entry: [5054](#)

UniProt Entry: [P05121](#)

Application Information

Molecular Weight: Predicted, 45 kDa, observed, 45 kDa

Clonality: Rabbit monoclonal antibody

Clone ID: 24GB4055

Species Reactivity: Human

Applications Tested: Western blotting (WB), flow cytometry (FCM), immunocytochemistry (IC)

Immunogen

A synthesized peptide derived from human PAI1

Isotype

Rabbit IgG

Storage Buffer

Supplied in PBS (pH 7.4) containing 50% glycerol, and 0.02% sodium azide.

Storage

Store at -20 °C for one year.

Recommended Dilutions

Western Blotting (WB): 1:1,000-1:5,000

Flow Cytometry (FCM): 1:2,000

Immunocytochemistry (IC): 1:100-1:1,000

SUPPORT

SUPPORT@GENUINBIOTECH.COM
TEL: +1-540-855-7041

ORDERS

SALES@GENUINBIOTECH.COM
FAX: +1-540-855-7041

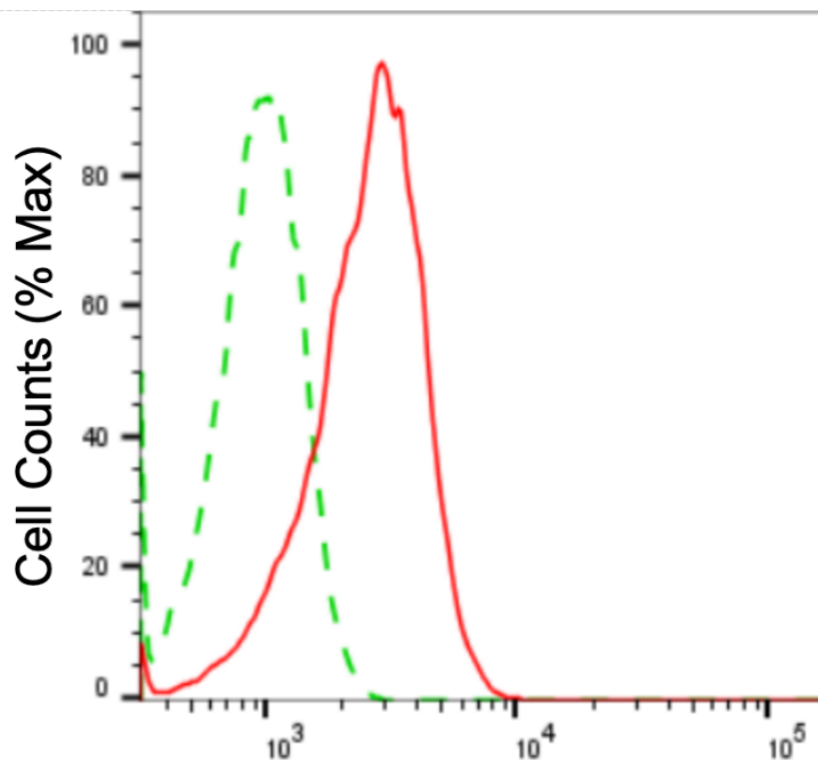
WWW.GENUINBIOTECH.COM

KD-Validated Anti-Serpin Family E Member 1 Recombinant Rabbit Monoclonal Antibody

PAGE 2

Note: This product is for research use only.

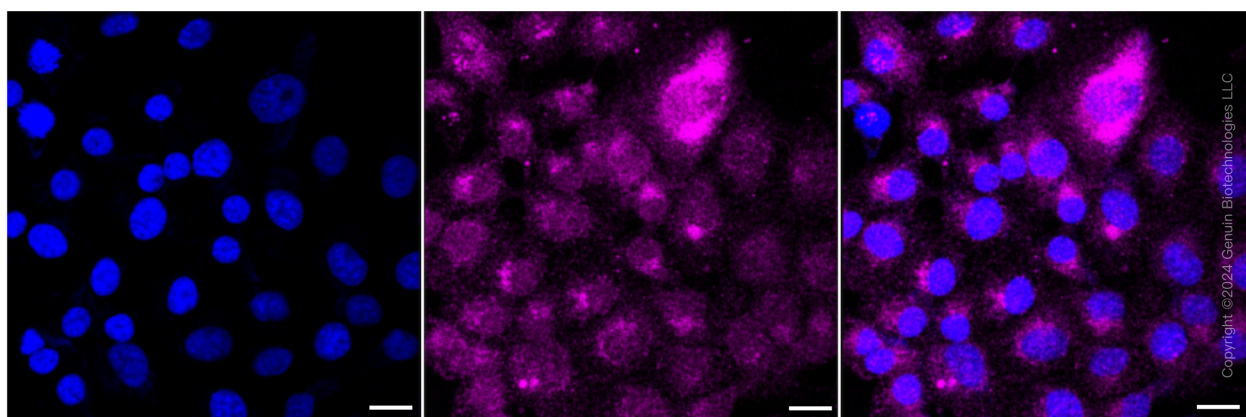
Validation Data



Copyright ©2024 Genuin Biotechnologies LLC

Serpin family E member 1-Alexa Fluor® 647

Flow cytometric analysis of Serpin family E member 1 expression in HT-1080 cells using anti-Serpin family E member 1 antibody (Cat#63098, 1:2,000). Green, isotype control; red, Serpin family E member 1.



Copyright ©2024 Genuin Biotechnologies LLC

Immunocytochemical staining of HT-1080 cells with anti-Serpin family E member 1 antibody (Cat#63098, 1:1,000). Nuclei were stained blue with DAPI; Serpin family E member 1 was stained magenta with Alexa Fluor® 647. Images were taken using Leica stellaris 5. Protein

SUPPORT

SUPPORT@GENUINBIOTECH.COM
TEL: +1-540-855-7041

ORDERS

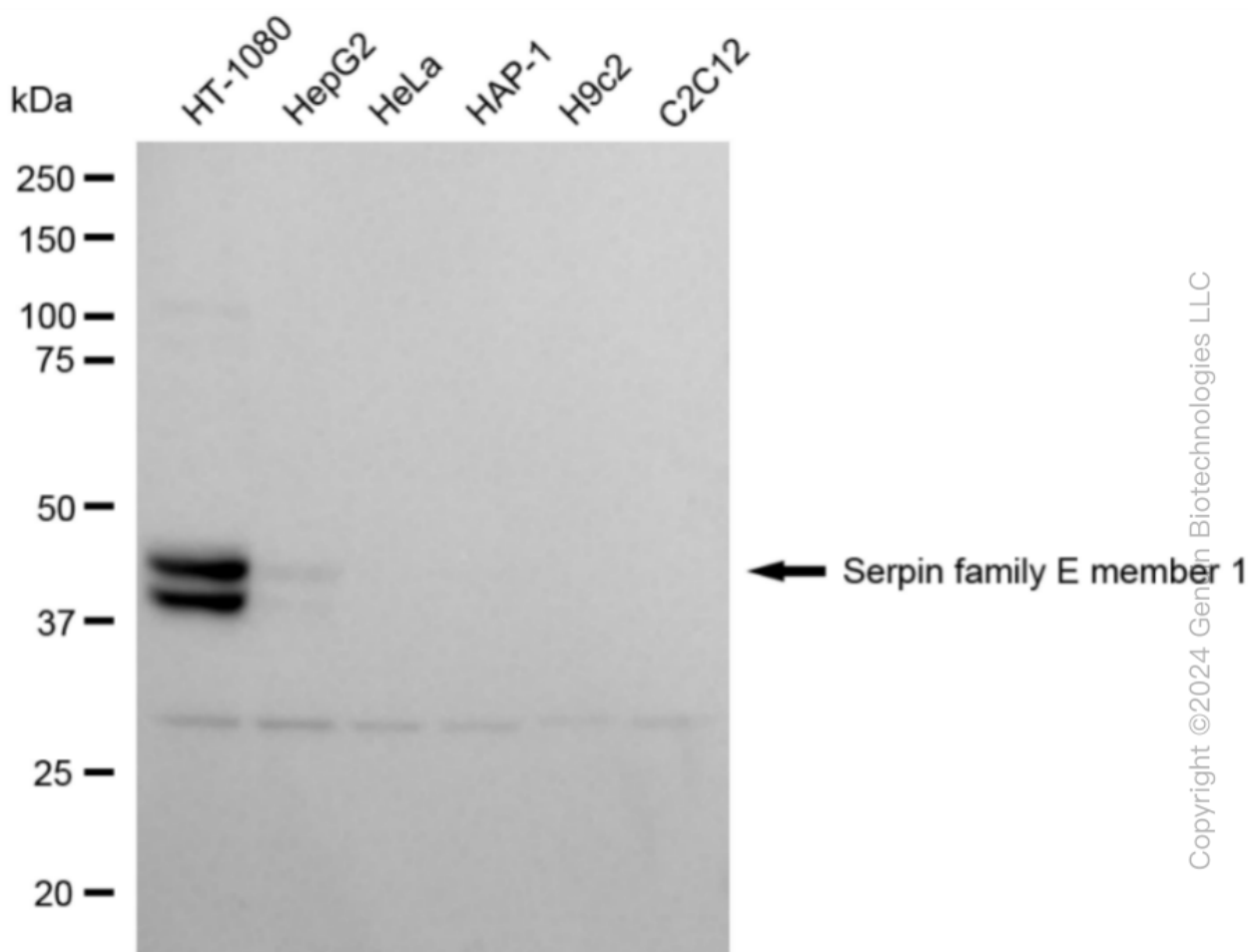
SALES@GENUINBIOTECH.COM
FAX: +1-540-855-7041

WWW.GENUINBIOTECH.COM

KD-Validated Anti-Serpin Family E Member 1 Recombinant Rabbit Monoclonal Antibody

PAGE 3

abundance based on laser Intensity and smart gain: Low. Scale bar: 20 μ m.



Western blotting analysis using anti-serpin family E member 1 antibody (Cat#63098). Total cell lysates (30 μ g) from various cell lines were loaded and separated by SDS-PAGE. The blot was incubated with anti-serpin family E member 1 antibody (Cat#63098, 1:5,000) and HRP-conjugated goat anti-rabbit secondary antibody (Cat#201, 1:20,000) respectively. Image was developed using FeQ™ ECL Substrate Kit (Cat#226).

SUPPORT

SUPPORT@GENUINBIOTECH.COM
TEL: +1-540-855-7041

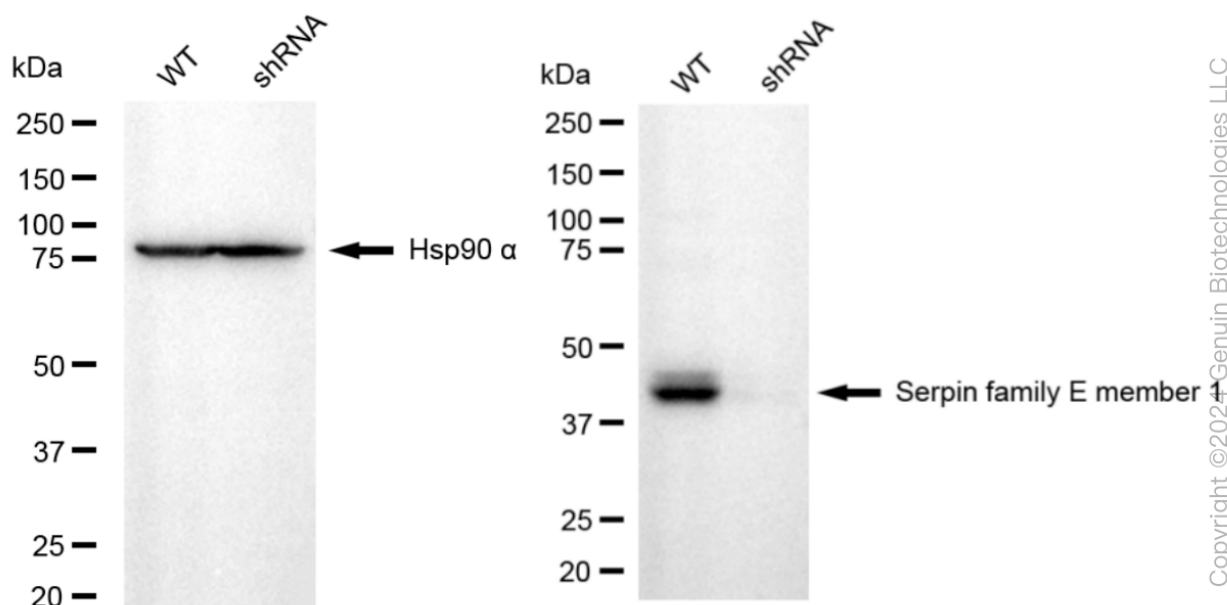
ORDERS

SALES@GENUINBIOTECH.COM
FAX: +1-540-855-7041

WWW.GENUINBIOTECH.COM

KD-Validated Anti-Serpin Family E Member 1 Recombinant Rabbit Monoclonal Antibody

PAGE 4



Western blotting analysis using anti-serpin family E member 1 antibody (Cat#63098). Serpin family E member 1 expression in wild-type (WT) and serpin family E member 1 (SERPINE1) shRNA knockdown (KD) HT-1080 cells with 20 μ g of total cell lysates. Hsp90 α serves as a loading control. The blot was incubated with anti-serpin family E member 1 antibody (Cat#63098, 1:5,000) and HRP-conjugated goat anti-rabbit secondary antibody (Cat#201, 1:20,000) respectively. Image was developed using NaQ™ ECL Substrate Kit (Cat#716).

SUPPORT

SUPPORT@GENUINBIOTECH.COM
TEL: +1-540-855-7041

ORDERS

SALES@GENUINBIOTECH.COM
FAX: +1-540-855-7041

WWW.GENUINBIOTECH.COM