

# KD-Validated Anti-T-Complex 1 Recombinant Rabbit Monoclonal Antibody



**Catalog #: 63137**

## Aliases

TCP1; T-Complex 1; CCT1; D6S230E; Ccta; T-Complex Protein 1 Subunit Alpha; TCP-1-Alpha; CCT-Alpha; T-Complex Protein 1, Alpha Subunit; Tailless Complex Polypeptide 1; T-Complex 1 Protein; CCTA

## Background

Gene Name: TCP1

NCBI Gene Entry: [6950](#)

UniProt Entry: [P17987](#)

## Application Information

Molecular Weight: Predicted, 60 kDa, observed, 50 kDa

Clonality: Rabbit monoclonal antibody

Clone ID: 24GB4245

Species Reactivity: Human

Applications Tested: Western blotting (WB), flow cytometry (FCM), immunocytochemistry (IC)

## Immunogen

A synthesized peptide derived from human TCP1 alpha

## Isotype

Rabbit IgG

## Storage Buffer

Supplied in PBS (pH 7.4) containing 50% glycerol, and 0.02% sodium azide.

## Storage

Store at -20 °C for one year.

## Recommended Dilutions

Western Blotting (WB): 1:1,000-1:5,000

Flow Cytometry (FCM): 1:2,000

Immunocytochemistry (IC): 1:100-1:1,000

**Note:** This product is for research use only.

---

### SUPPORT

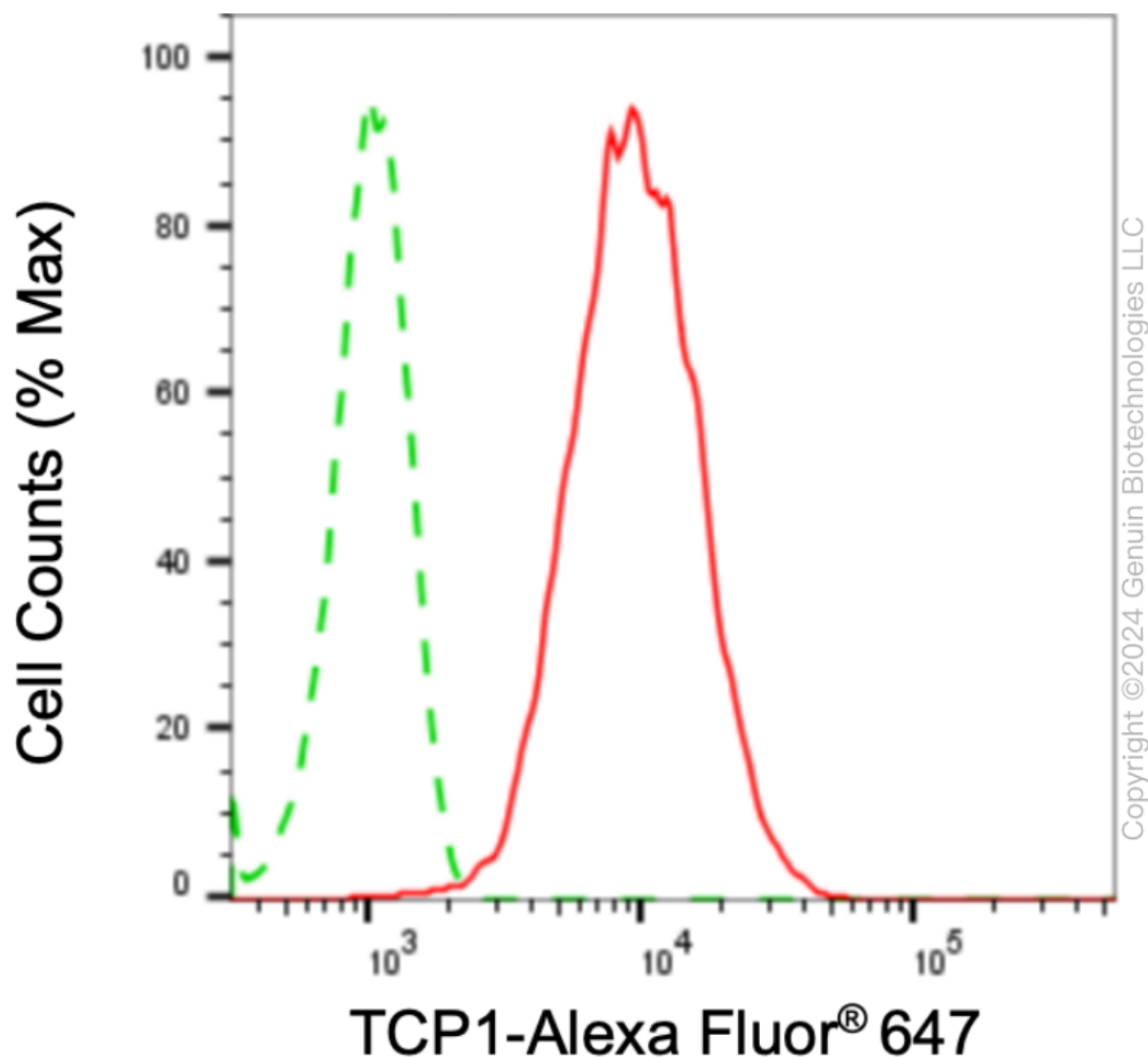
SUPPORT@GENUINBIOTECH.COM  
TEL: +1-540-855-7041

### ORDERS

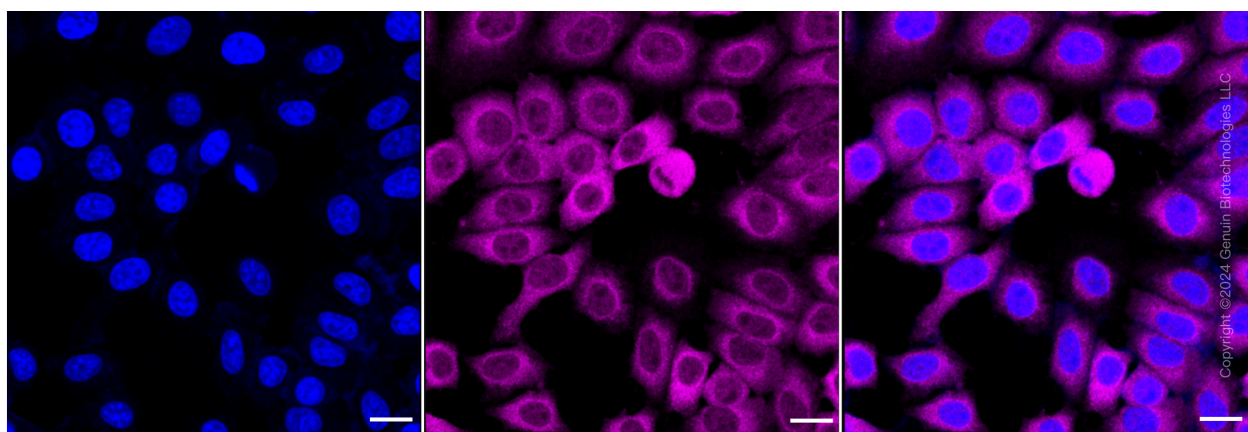
SALES@GENUINBIOTECH.COM  
FAX: +1-540-855-7041

[WWW.GENUINBIOTECH.COM](http://WWW.GENUINBIOTECH.COM)

**Validation Data**



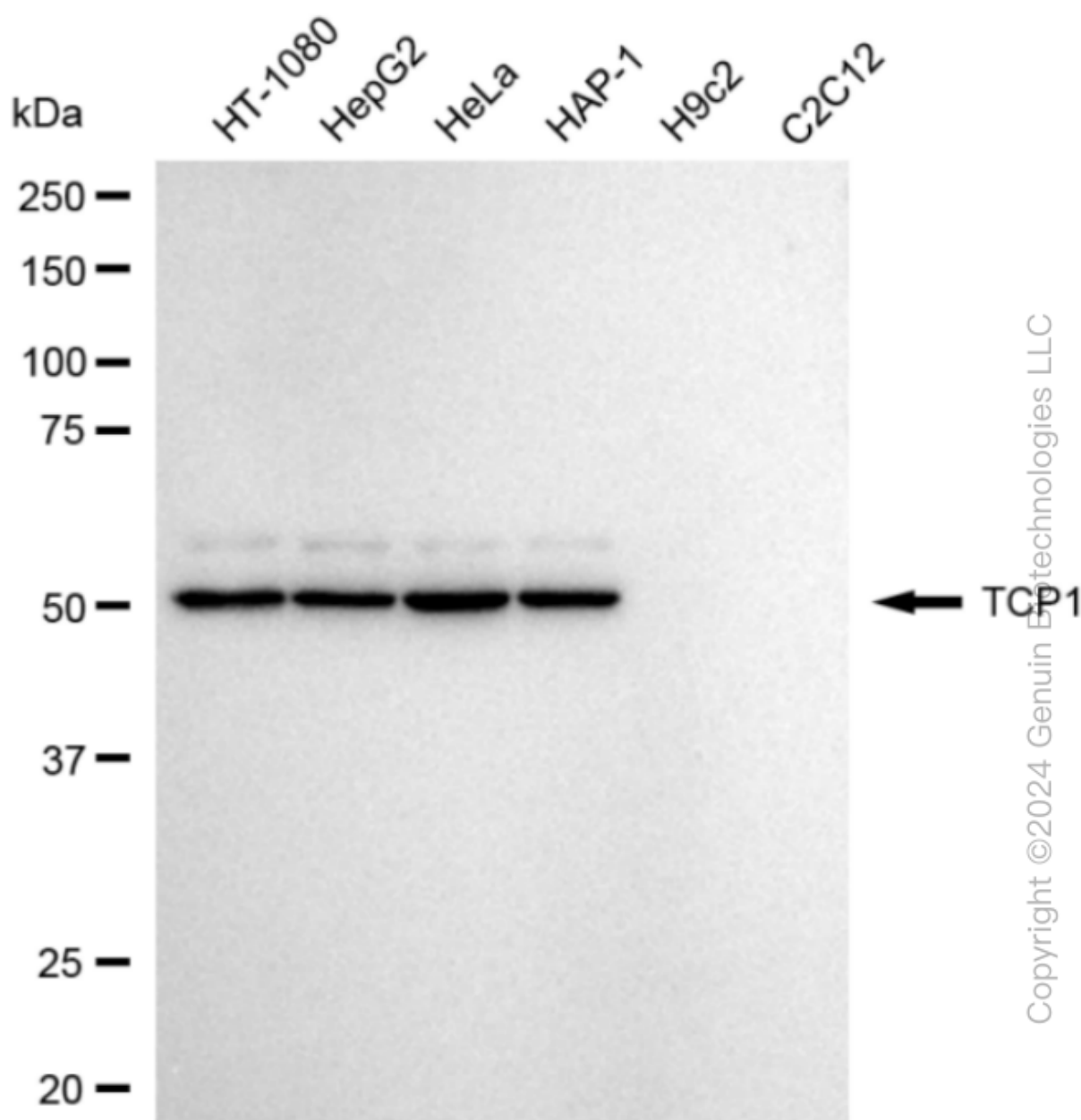
Flow cytometric analysis of TCP1 expression in HepG2 cells using anti-TCP1 antibody (Cat#63137, 1:2,000). Green, isotype control; red, TCP1.



## KD-Validated Anti-T-Complex 1 Recombinant Rabbit Monoclonal Antibody

PAGE 3

Immunocytochemical staining of HepG2 cells with anti-TCP1 antibody (Cat#63137, 1:1,000). Nuclei were stained blue with DAPI; TCP1 was stained magenta with Alexa Fluor® 647. Images were taken using Leica stellaris 5. Protein abundance based on laser Intensity and smart gain: High. Scale bar: 20  $\mu$ m.



Western blotting analysis using anti-TCP1 antibody (Cat#63137). Total cell lysates (30  $\mu$ g) from various cell lines were loaded and separated by SDS-PAGE. The blot was incubated with anti-TCP1 antibody (Cat#63137, 1:5,000) and HRP-conjugated goat anti-rabbit secondary antibody (Cat#201, 1:20,000) respectively. Image was developed using FeQ™ ECL Substrate Kit (Cat#226).

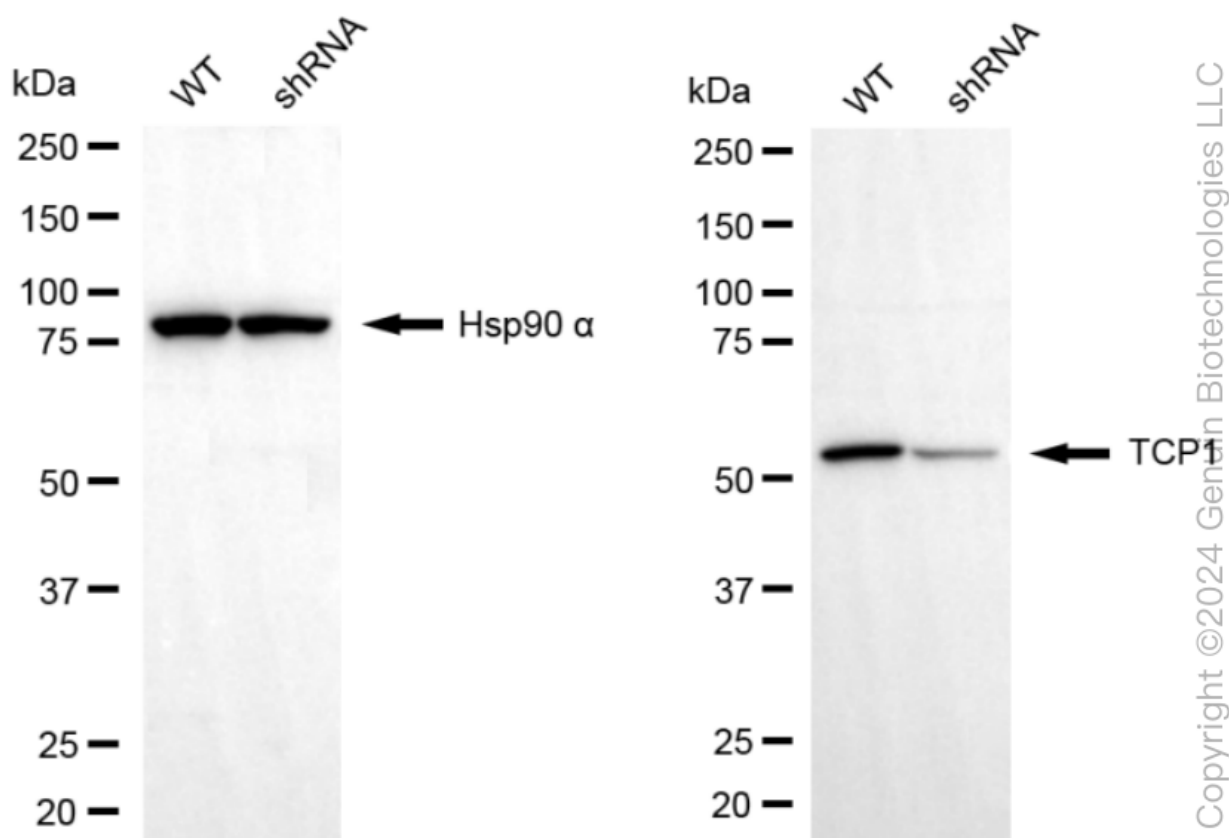
### SUPPORT

SUPPORT@GENUINBIOTECH.COM  
TEL: +1-540-855-7041

### ORDERS

SALES@GENUINBIOTECH.COM  
FAX: +1-540-855-7041

WWW.GENUINBIOTECH.COM



Western blotting analysis using anti-TCP1 antibody (Cat#63137). TCP1 expression in wild type (WT) and TCP1 shRNA knockdown (KD) HT-1080 cells with 20 µg of total cell lysates. Hsp90 α serves as a loading control. The blot was incubated with anti-TCP1 antibody (Cat#63137, 1:5,000) and HRP-conjugated goat anti-rabbit secondary antibody (Cat#201, 1:20,000) respectively. Image was developed using NaQ™ ECL Substrate Kit (Cat#716).