

KD-Validated Anti-Catalase Rabbit Monoclonal Antibody



Catalog #: 63157

Aliases

CAT; Catalase; EC 1.11.1.6; Epididymis Secretory Sperm Binding Protein

Background

Gene Name: CAT

NCBI Gene Entry: [847](#)

UniProt Entry: [P04040](#)

Application Information

Molecular Weight: Predicted, 60 kDa, observed, 60 kDa

Clonality: Rabbit monoclonal antibody

Clone ID: 24GB4290

Species Reactivity: Human, rat

Applications Tested: Western blotting (WB), flow cytometry (FCM), immunocytochemistry (IC)

Immunogen

Recombinant protein of mouse Catalase

Isotype

Rabbit IgG

Storage Buffer

Supplied in PBS (pH 7.4) containing 50% glycerol, and 0.02% sodium azide.

Storage

Store at -20 °C for one year.

Recommended Dilutions

Western Blotting (WB): 1:1,000-1:5,000

Flow Cytometry (FCM): 1:2,000

Immunocytochemistry (IC): 1:100-1:1,000

Note: This product is for research use only.

Validation Data

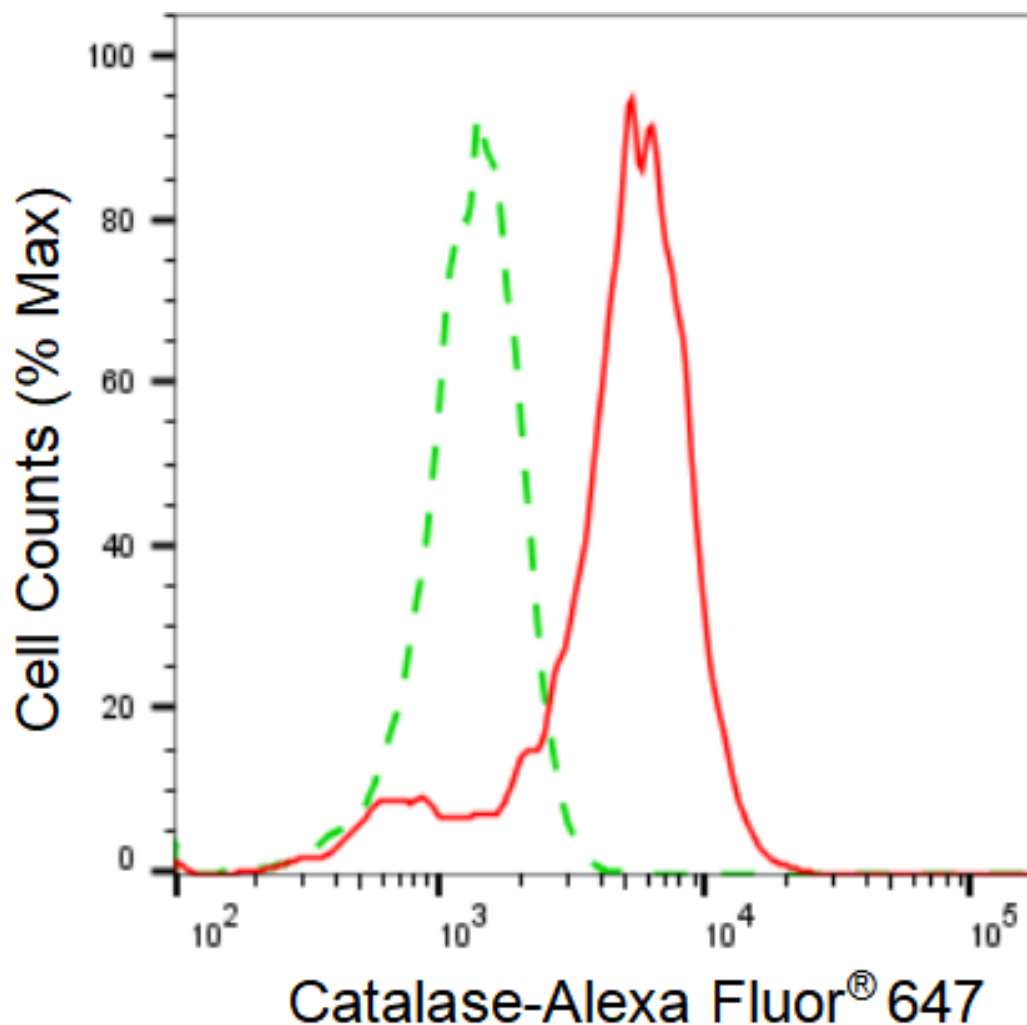
SUPPORT

SUPPORT@GENUINBIOTECH.COM
TEL: +1-540-855-7041

ORDERS

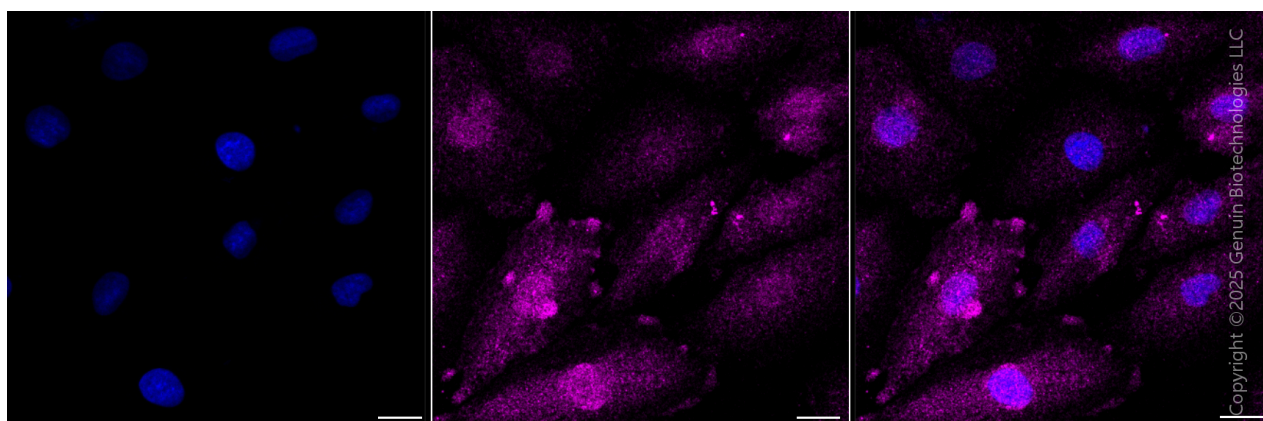
SALES@GENUINBIOTECH.COM
FAX: +1-540-855-7041

WWW.GENUINBIOTECH.COM



Copyright ©2025 Genuin Biotechnologies LLC

Flow cytometric analysis of catalase expression in H9c2 cells using anti-catalase antibody (Cat#63157, 1:2,000). Green, isotype control; red, catalase.



Immunocytochemical staining of H9C2 cells with anti-Catalase antibody (Cat#63157, 1:1,000) . Nuclei were stained blue with DAPI; Catalase was stained magenta with Alexa Fluor® 647. Images were taken using Leica stellaris 5. Protein abundance based on laser Intensity and smart

SUPPORT

SUPPORT@GENUINBIOTECH.COM
TEL: +1-540-855-7041

ORDERS

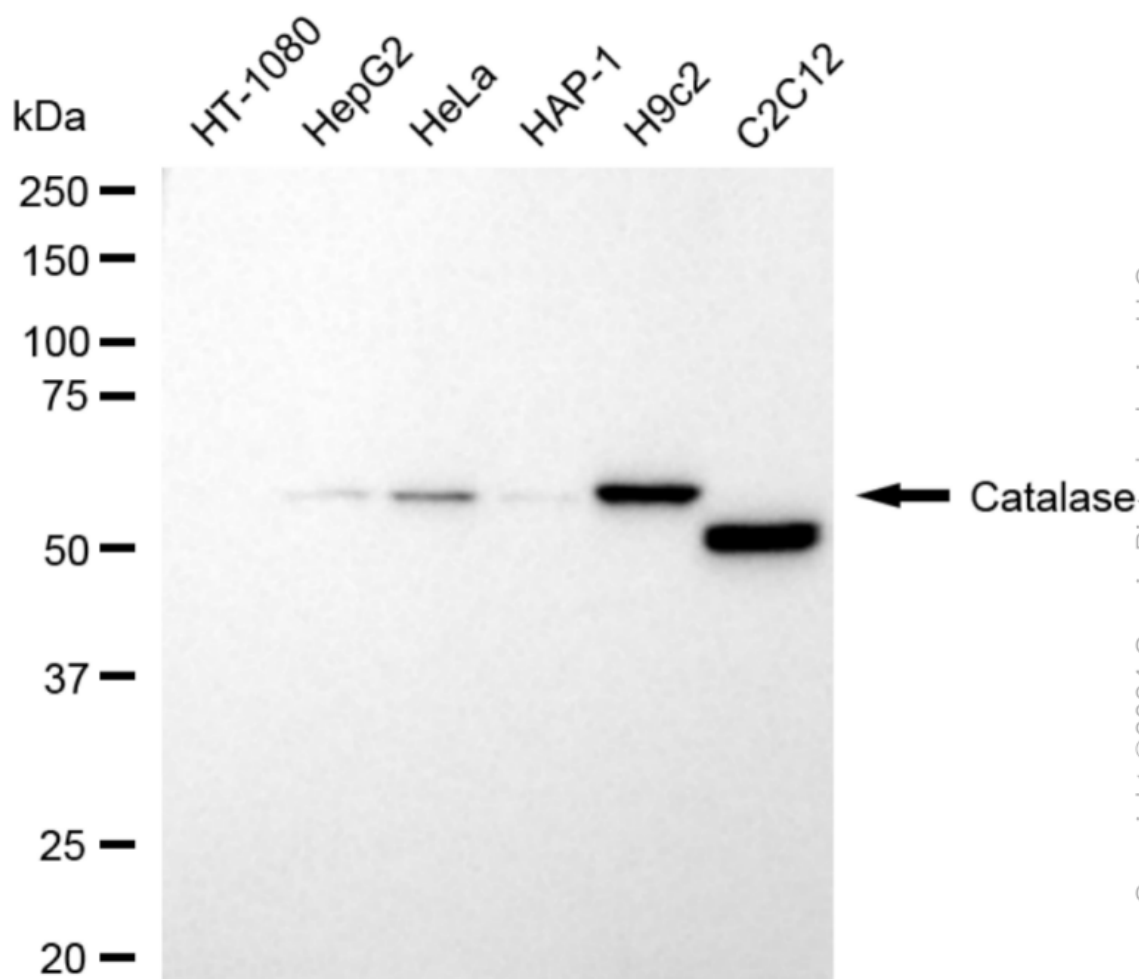
SALES@GENUINBIOTECH.COM
FAX: +1-540-855-7041

WWW.GENUINBIOTECH.COM

KD-Validated Anti-Catalase Rabbit Monoclonal Antibody

PAGE 3

gain □ Low. Scale bar, 20 μm.



Copyright ©2024 Genuin Biotechnologies LLC

Western blotting analysis using anti-catalase antibody (Cat#63157). Total cell lysates (30 μg) from various cell lines were loaded and separated by SDS-PAGE. The blot was incubated with anti-catalase antibody (Cat#63157, 1:5,000) and HRP-conjugated goat anti-rabbit secondary antibody (Cat#201, 1:20,000) respectively. Image was developed using NaQ™ ECL Substrate Kit (Cat#716).

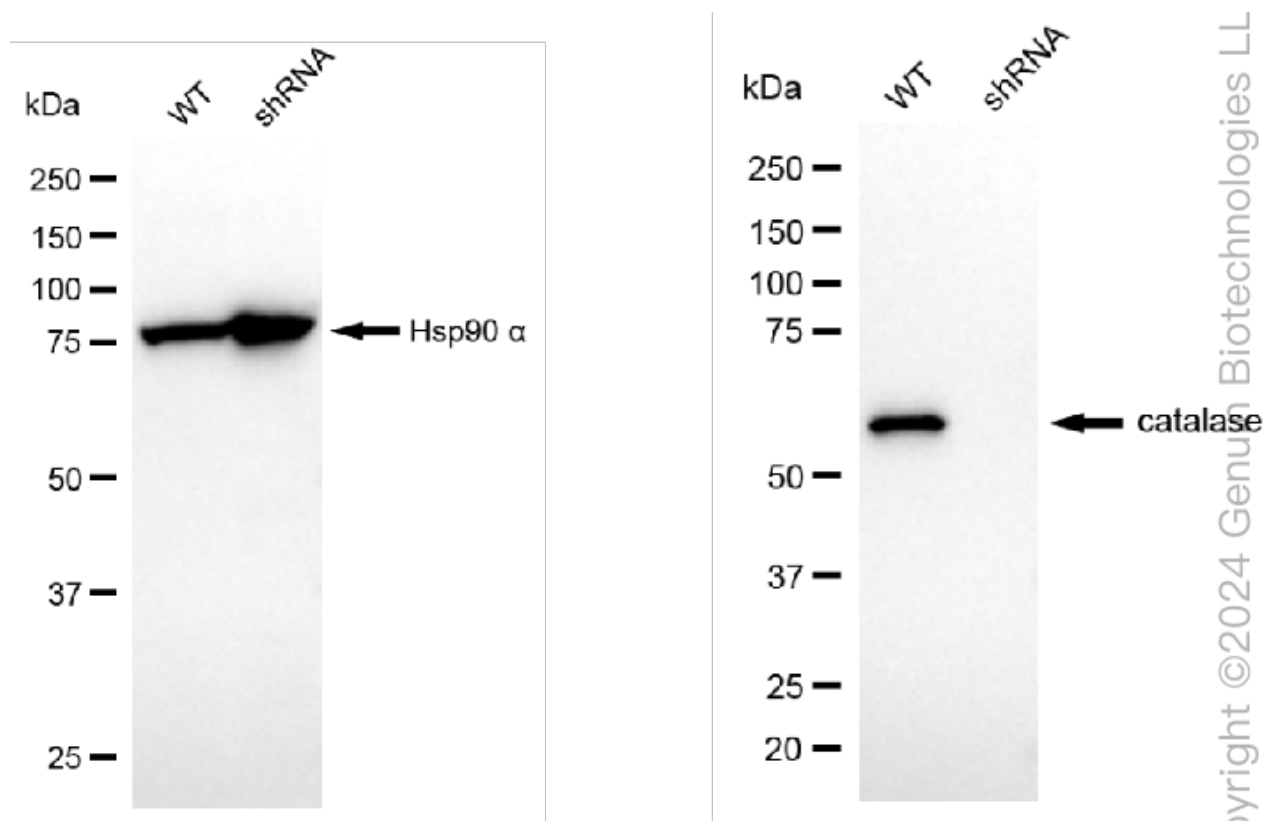
SUPPORT

SUPPORT@GENUINBIOTECH.COM
TEL: +1-540-855-7041

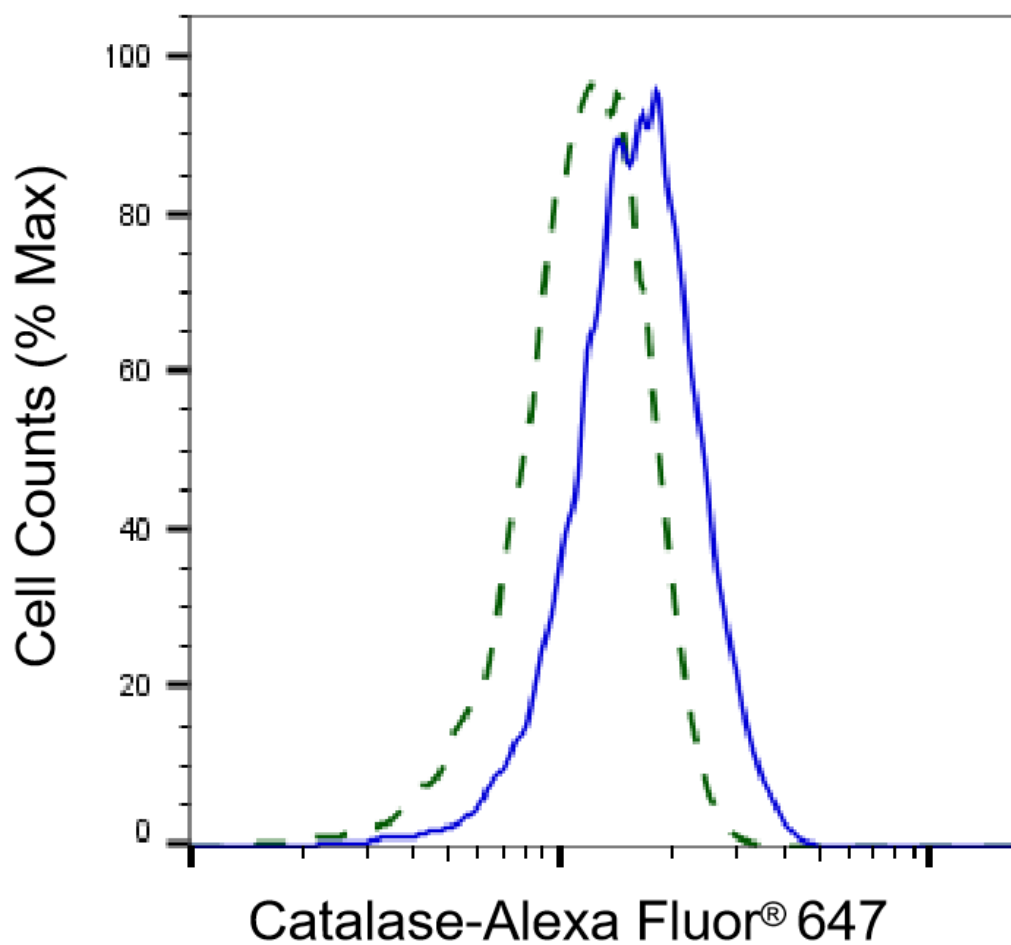
ORDERS

SALES@GENUINBIOTECH.COM
FAX: +1-540-855-7041

WWW.GENUINBIOTECH.COM



Western blotting analysis using anti-catalase antibody (Cat#63157). Catalase expression in wild type (WT) and catalase (CAT) shRNA knockdown (KD) HeLa cells with 20 µg of total cell lysates. Hsp90 α serves as a loading control. The blot was incubated with anti-catalase antibody (Cat#63157, 1:5,000) and HRP-conjugated goat anti-rabbit secondary antibody (Cat#201, 1:20,000) respectively. Image was developed using NaQ™ ECL Substrate Kit (Cat#716).



Validation of Catalase knockdown using flow cytometry. Wild-type(WT, Blue) and knockdown(KD, Green) HeLa cells were stained with anti-Catalase antibody (Cat#63157, 1:2,000) and analyzed using BD flow cytometer.