

# KD-Validated Anti-Catalase Rabbit Monoclonal Antibody



**Catalog #: 63158**

## Aliases

CAT; Catalase; EC 1.11.1.6; Epididymis Secretory Sperm Binding Protein

## Background

Gene Name: CAT

NCBI Gene Entry: [847](#)

UniProt Entry: [P04040](#)

## Application Information

Molecular Weight: Predicted, 60 kDa, observed, 60 kDa

Clonality: Rabbit monoclonal antibody

Clone ID: 24GB4295

Species Reactivity: Human

Applications Tested: Western blotting (WB), flow cytometry (FCM)

## Immunogen

A synthesized peptide derived from human Catalase

## Isotype

Rabbit IgG

## Storage Buffer

Supplied in PBS (pH 7.4) containing 50% glycerol, and 0.02% sodium azide.

## Storage

Store at -20 °C for one year.

## Recommended Dilutions

Western Blotting (WB): 1:1,000-1:5,000

Flow Cytometry (FCM): 1:2,000

**Note:** This product is for research use only.

## Validation Data

---

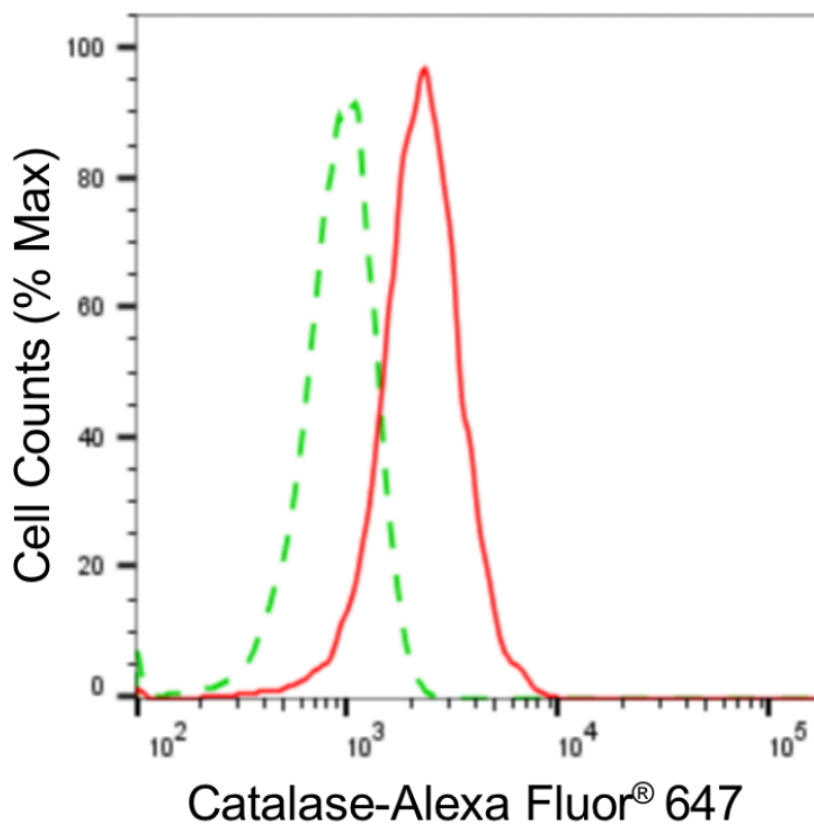
### SUPPORT

SUPPORT@GENUINBIOTECH.COM  
TEL: +1-540-855-7041

### ORDERS

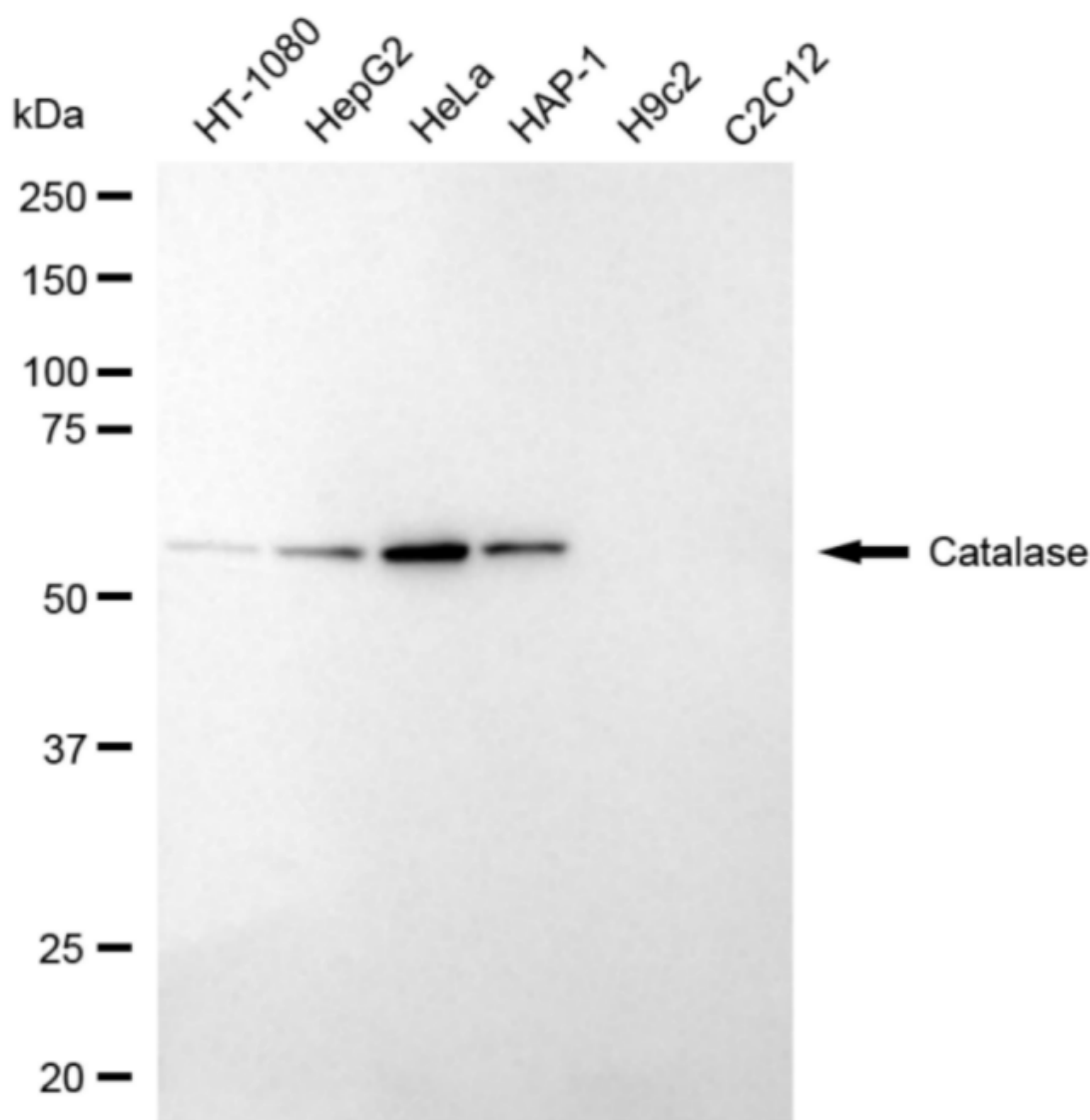
SALES@GENUINBIOTECH.COM  
FAX: +1-540-855-7041

[WWW.GENUINBIOTECH.COM](http://WWW.GENUINBIOTECH.COM)



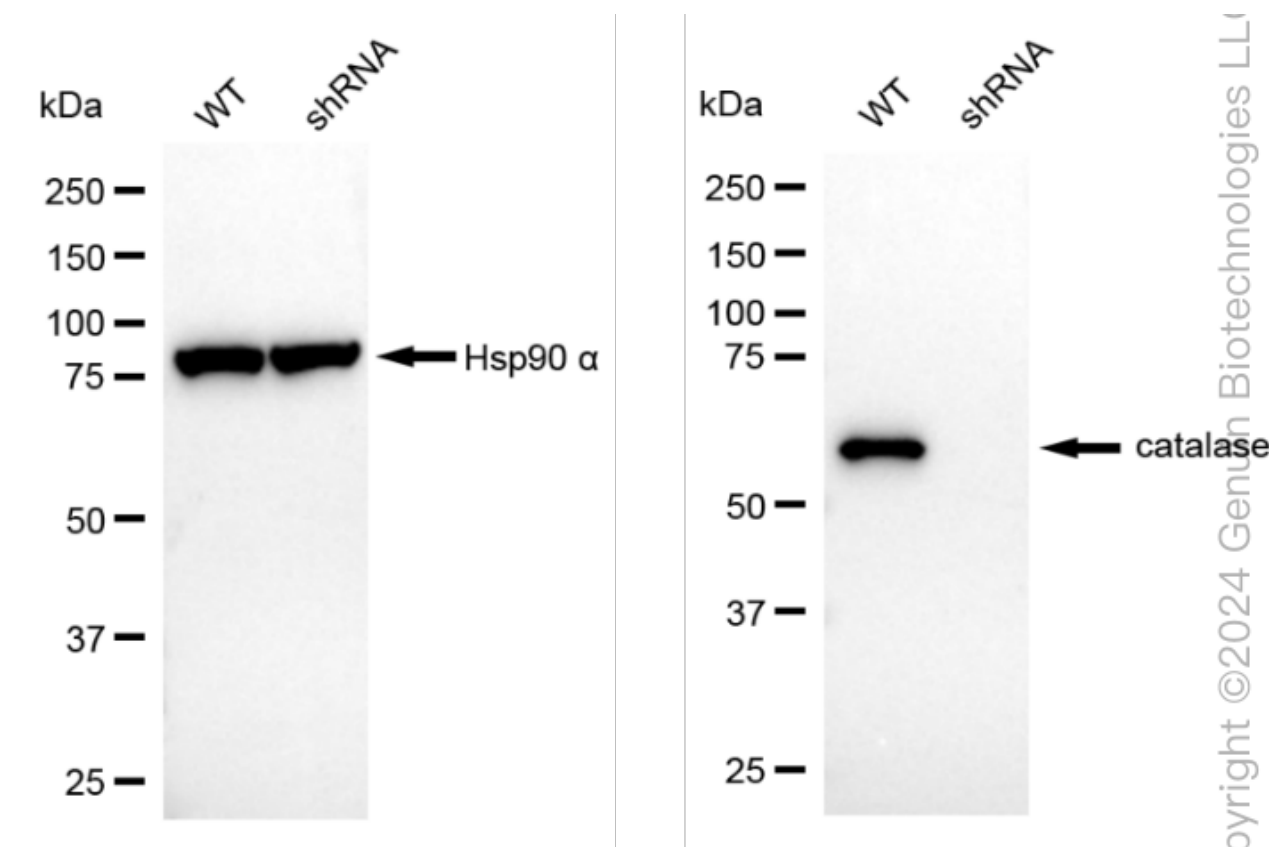
Copyright ©2024 Genuin Biotechnologies LLC

Flow cytometric analysis of Catalase expression in HeLa cells using anti-Catalase antibody (Cat#63158, 1:2,000). Green, isotype control; red, Catalase.

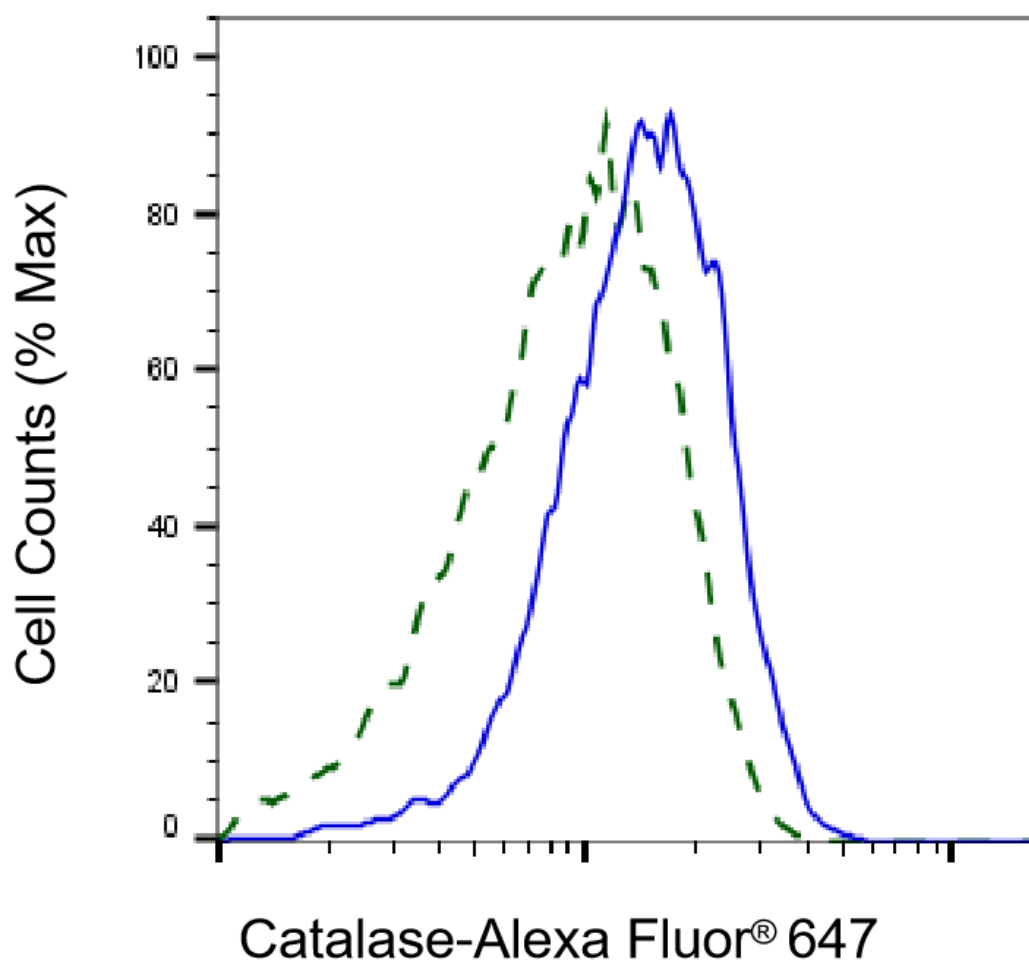


Copyright ©2024 Genuin Biotechnologies LLC

Western blotting analysis using anti-catalase antibody (Cat#63158). Total cell lysates (30  $\mu$ g) from various cell lines were loaded and separated by SDS-PAGE. The blot was incubated with anti-catalase antibody (Cat#63158, 1:5,000) and HRP-conjugated goat anti-rabbit secondary antibody (Cat#201, 1:20,000) respectively. Image was developed using NaQ™ ECL Substrate Kit (Cat#716).



Western blotting analysis using anti-catalase antibody (Cat#63158). Catalase expression in wild type (WT) and catalase (CAT) shRNA knockdown (KD) HeLa cells with 20 µg of total cell lysates. Hsp90 α serves as a loading control. The blot was incubated with anti-catalase antibody (Cat#63158, 1:5,000) and HRP-conjugated goat anti-rabbit secondary antibody (Cat#201, 1:20,000) respectively. Image was developed using NaQ™ ECL Substrate Kit (Cat#716).



Validation of Catalase knockdown using flow cytometry. Wild-type(WT, Blue) and knockdown(KD, Green) HeLa cells were stained with anti-Catalase antibody (Cat#63158, 1:2,000) and analyzed using BD flow cytometer.