

KD-Validated Anti-Cyclin B1 Rabbit Monoclonal Antibody



Catalog #: 63159

Aliases

CCNB1; Cyclin B1; CCNB; G2/Mitotic-Specific Cyclin-B1; G2/Mitotic-Specific Cyclin B1

Background

Gene Name: CCNB1

NCBI Gene Entry: [891](#)

UniProt Entry: [P14635](#)

Application Information

Molecular Weight: Predicted, 48 kDa, observed, 55 kDa

Clonality: Rabbit monoclonal antibody

Clone ID: 24GB4300

Species Reactivity: Human

Applications Tested: Western blotting (WB), flow cytometry (FCM), immunocytochemistry (IC)

Immunogen

A synthesized peptide derived from human Cyclin B1

Isotype

Rabbit IgG

Storage Buffer

Supplied in PBS (pH 7.4) containing 50% glycerol, and 0.02% sodium azide.

Storage

Store at -20 °C for one year.

Recommended Dilutions

Western Blotting (WB): 1:1,000-1:5,000

Flow Cytometry (FCM): 1:2,000

Immunocytochemistry (IC): 1:100-1:1,000

Note: This product is for research use only.

Validation Data

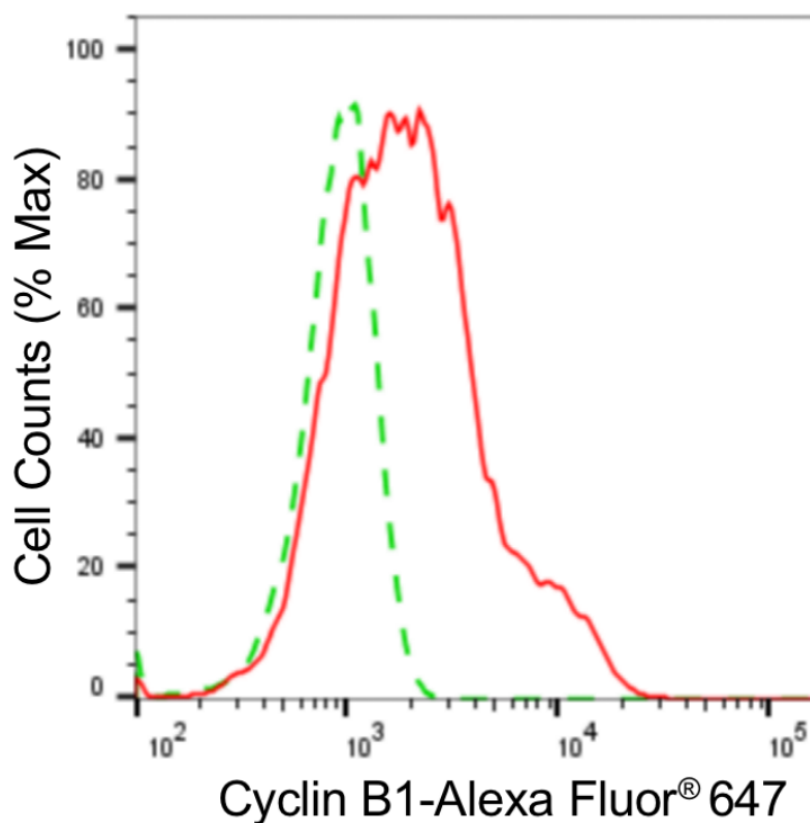
SUPPORT

SUPPORT@GENUINBIOTECH.COM
TEL: +1-540-855-7041

ORDERS

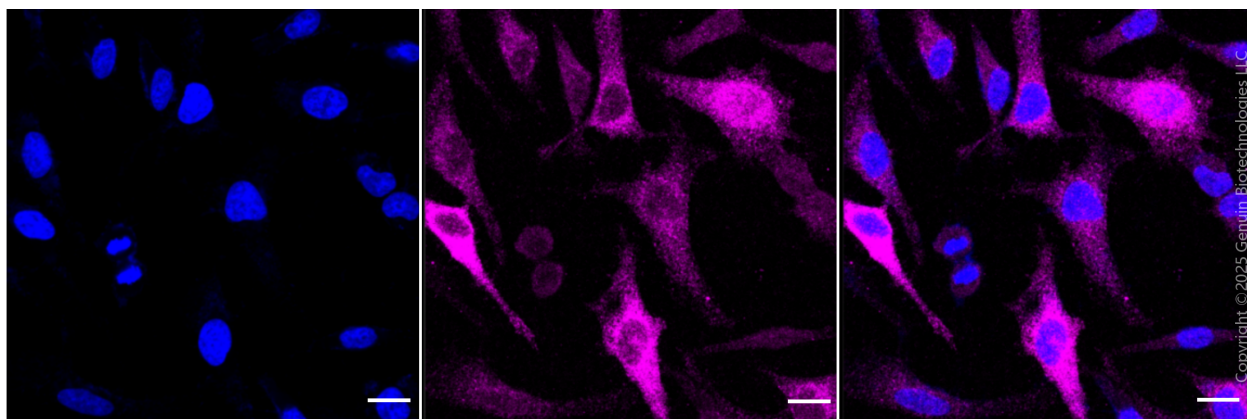
SALES@GENUINBIOTECH.COM
FAX: +1-540-855-7041

WWW.GENUINBIOTECH.COM



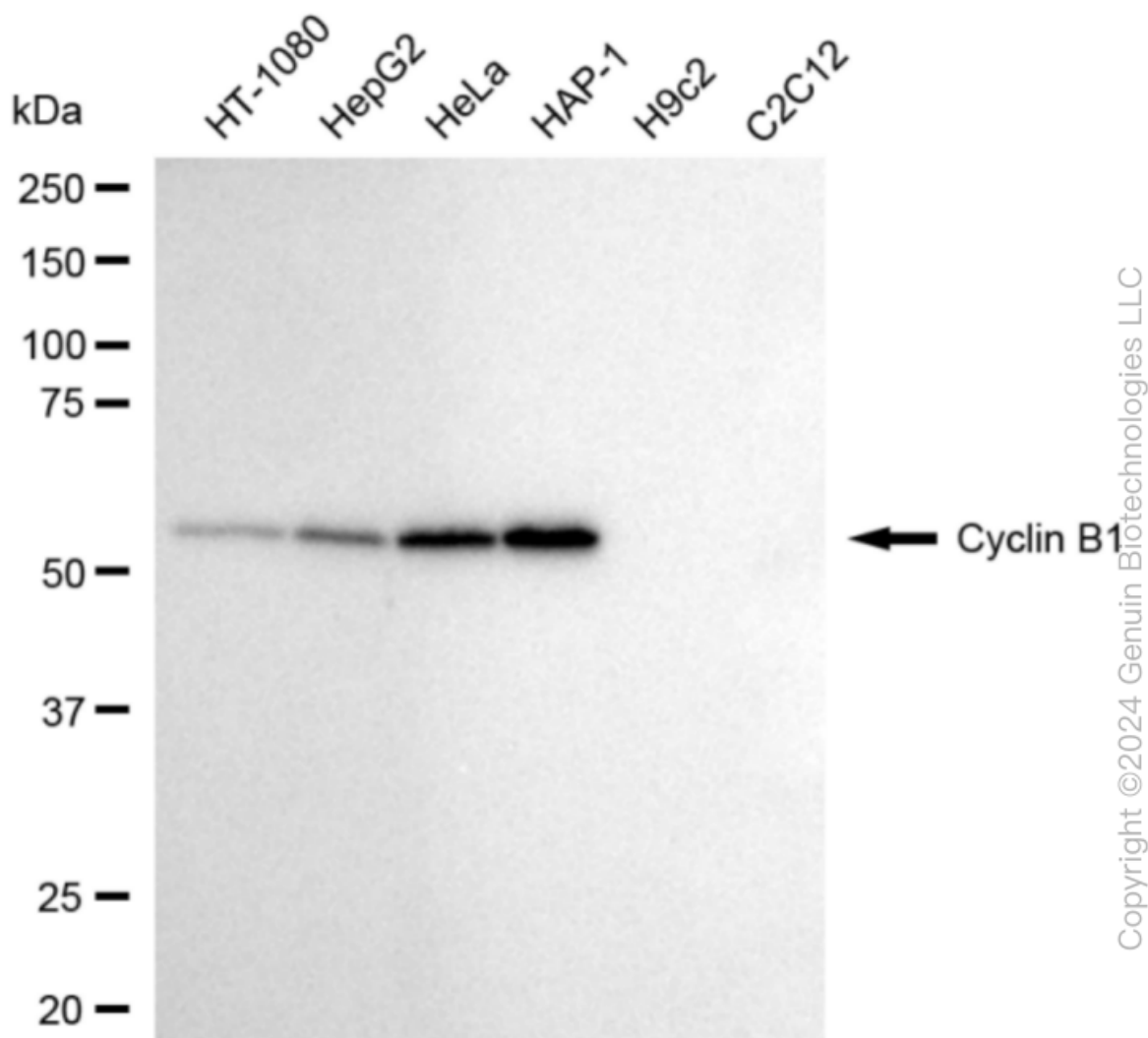
Copyright ©2024 Genuin Biotechnologies LLC

Flow cytometric analysis of Cyclin B1 expression in HeLa cells using anti-Cyclin B1 antibody (Cat#63159, 1:2,000). Green, isotype control; red, Cyclin B1.

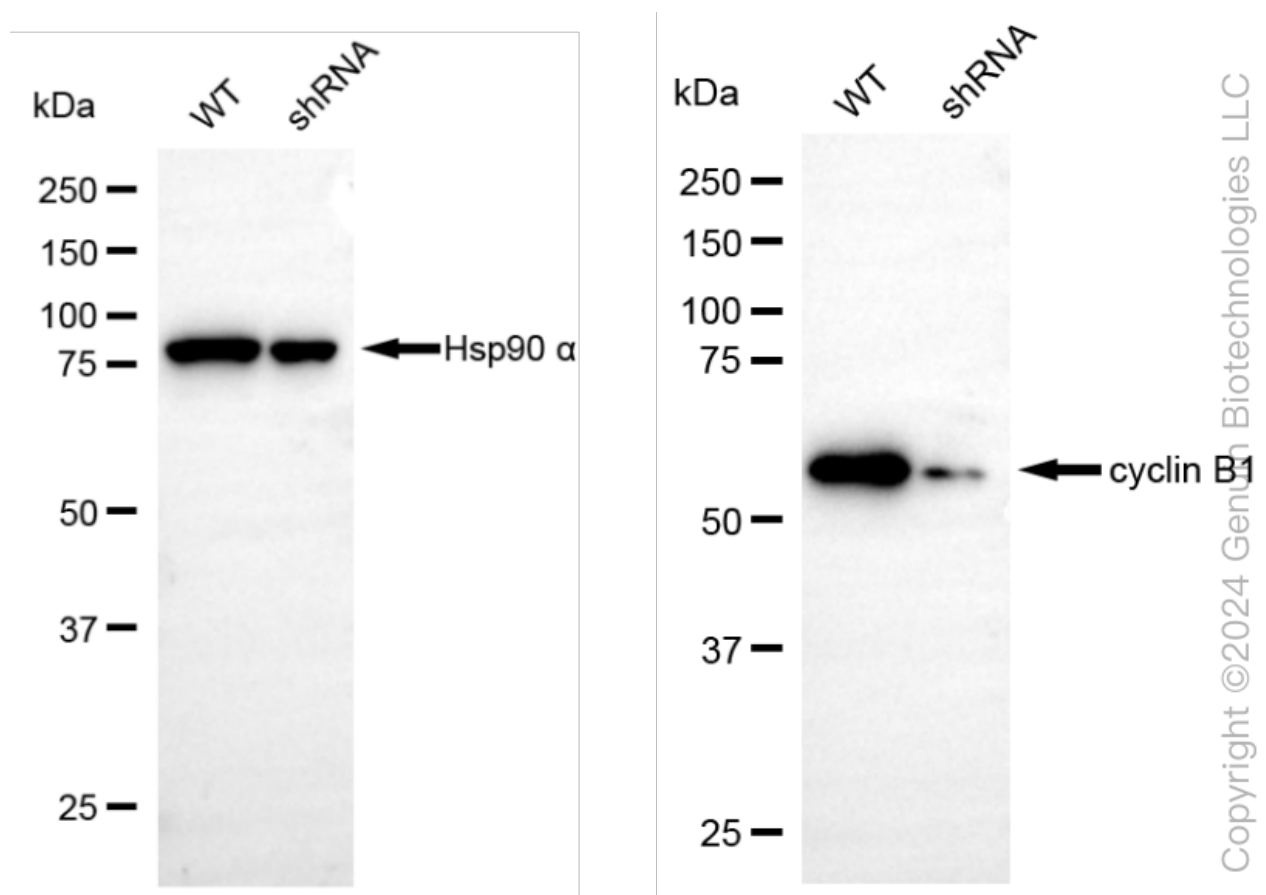


Copyright ©2025 Genuin Biotechnologies LLC

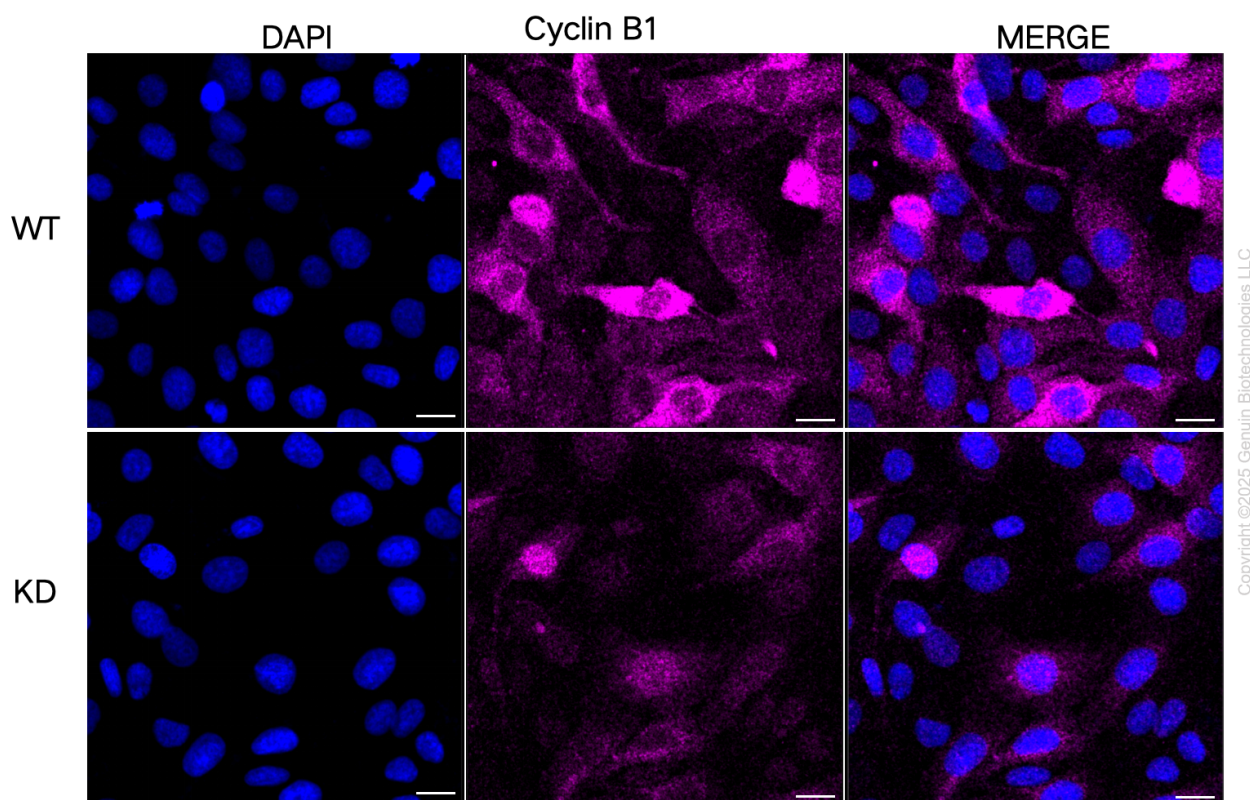
Immunocytochemical staining of HeLa cells with Cyclin B1 antibody (Cat#63159, 1:1,000). Nuclei were stained blue with DAPI; Cyclin B1 was stained magenta with Alexa Fluor® 647. Images were taken using Leica stellaris 5. Protein abundance based on laser Intensity and smart gain: Medium. Scale bar: 20 μ m.



Western blotting analysis using anti-cyclin B1 antibody (Cat#63159). Total cell lysates (30 µg) from various cell lines were loaded and separated by SDS-PAGE. The blot was incubated with anti-cyclin B1 antibody (Cat#63159, 1:5,000) and HRP-conjugated goat anti-rabbit secondary antibody (Cat#201, 1:20,000) respectively. Image was developed using NaQ™ ECL Substrate Kit (Cat#716).



Western blotting analysis using anti-cyclin B1 antibody (Cat#63159). Cyclin B1 expression in wild-type (WT) and cyclin B1 (CCNB1) shRNA knockdown (KD) HT-1080 cells with 20 µg of total cell lysates. Hsp90 α serves as a loading control. The blot was incubated with anti-cyclin B1 antibody (Cat#63159, 1:5,000) and HRP-conjugated goat anti-rabbit secondary antibody (Cat#201, 1:20,000) respectively. Image was developed using NaQ™ ECL Substrate Kit (Cat#716).



Immunocytochemical staining of HT1080 cells using anti-Cyclin B1 antibody (Cat#63159, 1:1,000), Top panel: wild-type (WT); Bottom panel: Cyclin B1 shRNA knockdown (KD). Nuclei were stained blue with DAPI; Cyclin B1 was stained magenta with Alexa Fluor® 647. Scale bar, 20 μ m.