

KD-Validated Anti-Growth associated protein 43 Recombinant Rabbit Monoclonal Antibody



Catalog #: 63163

Aliases

GAP43; Growth Associated Protein 43; Axonal Membrane Protein GAP-43; Neural Phosphoprotein B-50; Neuromodulin; GAP-43; B-50; PP46; Neuron Growth-Associated Protein 43; Nerve Growth-Related Peptide GAP43; Calmodulin-Binding Protein P-57; Protein F1; Growth-Associated Protein 43; Pp46

Background

Gene Name: GAP43

NCBI Gene Entry: [2596](#)

UniProt Entry: [P17677](#)

Application Information

Molecular Weight: Predicted, 25 kDa, observed, 48 kDa

Clonality: Rabbit monoclonal antibody

Clone ID: 23GB1195

Species Reactivity: Human

Applications Tested: Western blotting (WB), flow cytometry (FCM), immunocytochemistry (IC), Immunohistochemistry (IHC)

Immunogen

A synthesized peptide derived from human GAP43

Isotype

Rabbit IgG

Storage Buffer

Supplied in PBS (pH 7.4) containing 50% glycerol, and 0.02% sodium azide.

Storage

Store at -20 °C for one year.

Recommended Dilutions

Western Blotting (WB): 1:1,000-1:50,000

Flow Cytometry (FCM): 1:2,000

Immunocytochemistry (IC): 1:100-1:1,000

Immunohistochemistry (IHC): 1:100-1:200

SUPPORT

SUPPORT@GENUINBIOTECH.COM
TEL: +1-540-855-7041

ORDERS

SALES@GENUINBIOTECH.COM
FAX: +1-540-855-7041

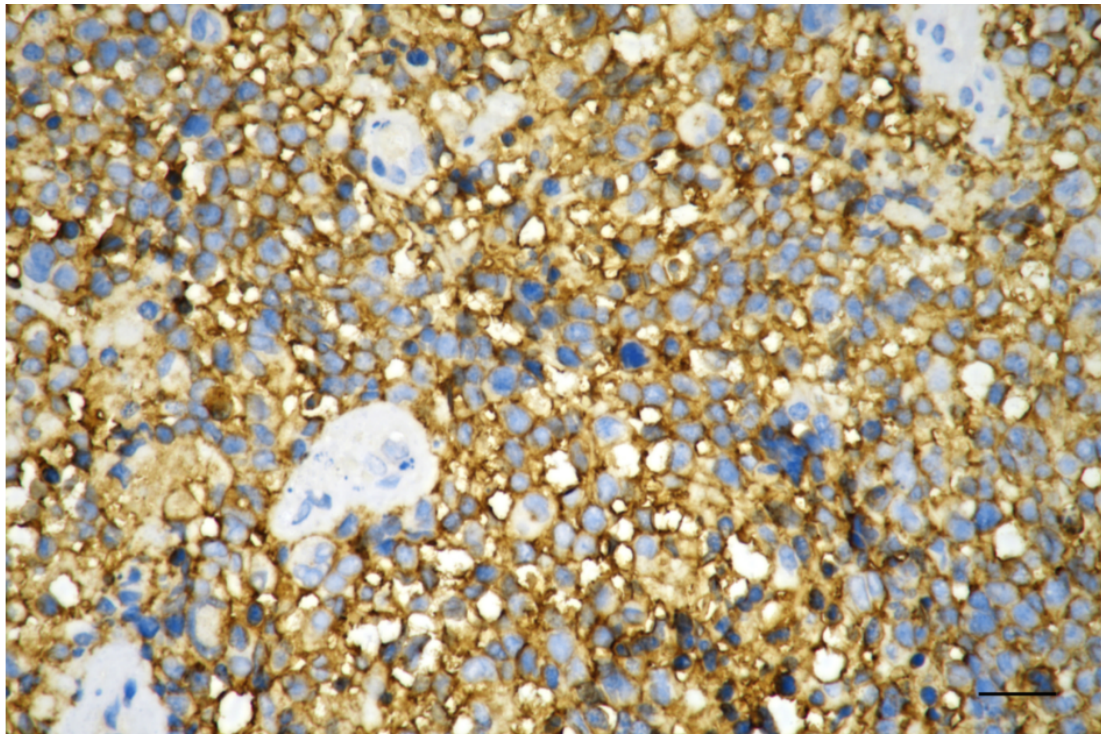
WWW.GENUINBIOTECH.COM

KD-Validated Anti-Growth associated protein 43 Recombinant Rabbit Monoclonal Antibody

PAGE 2

Note: This product is for research use only.

Validation Data



Copyright ©2025 Genuin Biotechnologies LLC

Immunohistochemistry was performed on paraffin-embedded human glioblastoma using anti-growth associated protein 43 antibody (Cat#63163, 1:200). Antigen retrieval was done in sodium citrate buffer (pH 6.0). DAB was used for detection, with hematoxylin counterstaining. Images were acquired using a Nikon Ci-L Plus microscope (40× objective). Scale bar: 25 μ m.

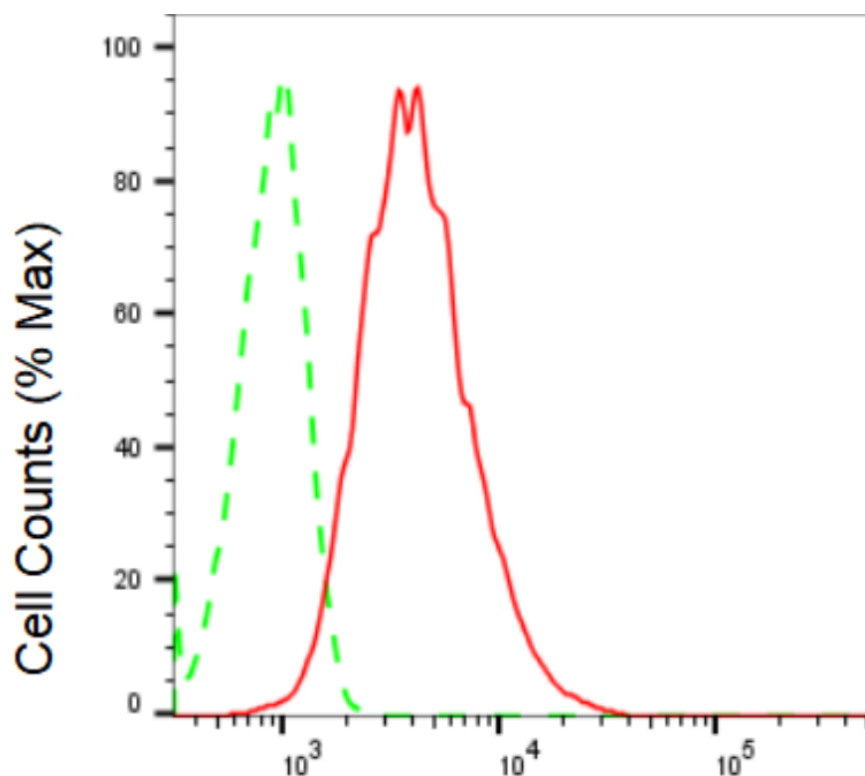
SUPPORT

SUPPORT@GENUINBIOTECH.COM
TEL: +1-540-855-7041

ORDERS

SALES@GENUINBIOTECH.COM
FAX: +1-540-855-7041

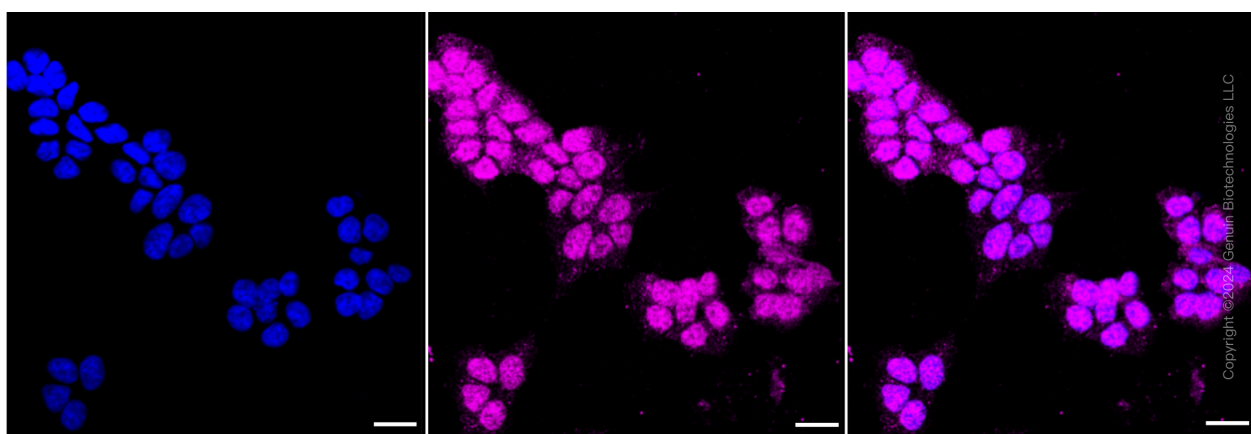
WWW.GENUINBIOTECH.COM



Copyright ©2024 Genuin Biotechnologies LLC

Growth associated protein 43-Alexa Fluor® 647

Flow cytometric analysis of Growth associated protein 43 expression in HAP-1 cells using Growth associated protein 43 antibody (Cat#63163, 1:2,000). Green, isotype control; red, Growth associated protein 43.



Copyright ©2024 Genuin Biotechnologies LLC

Immunocytochemical staining of HAP-1 cells with Growth associated protein 43 antibody (Cat#63163, 1:1,000). Nuclei were stained blue with DAPI; Growth associated protein 43 was stained magenta with Alexa Fluor® 647. Images were taken using Leica stellaris 5. Protein abundance based on laser Intensity and smart gain: Medium. Scale bar: 20 μ m.

SUPPORT

SUPPORT@GENUINBIOTECH.COM
TEL: +1-540-855-7041

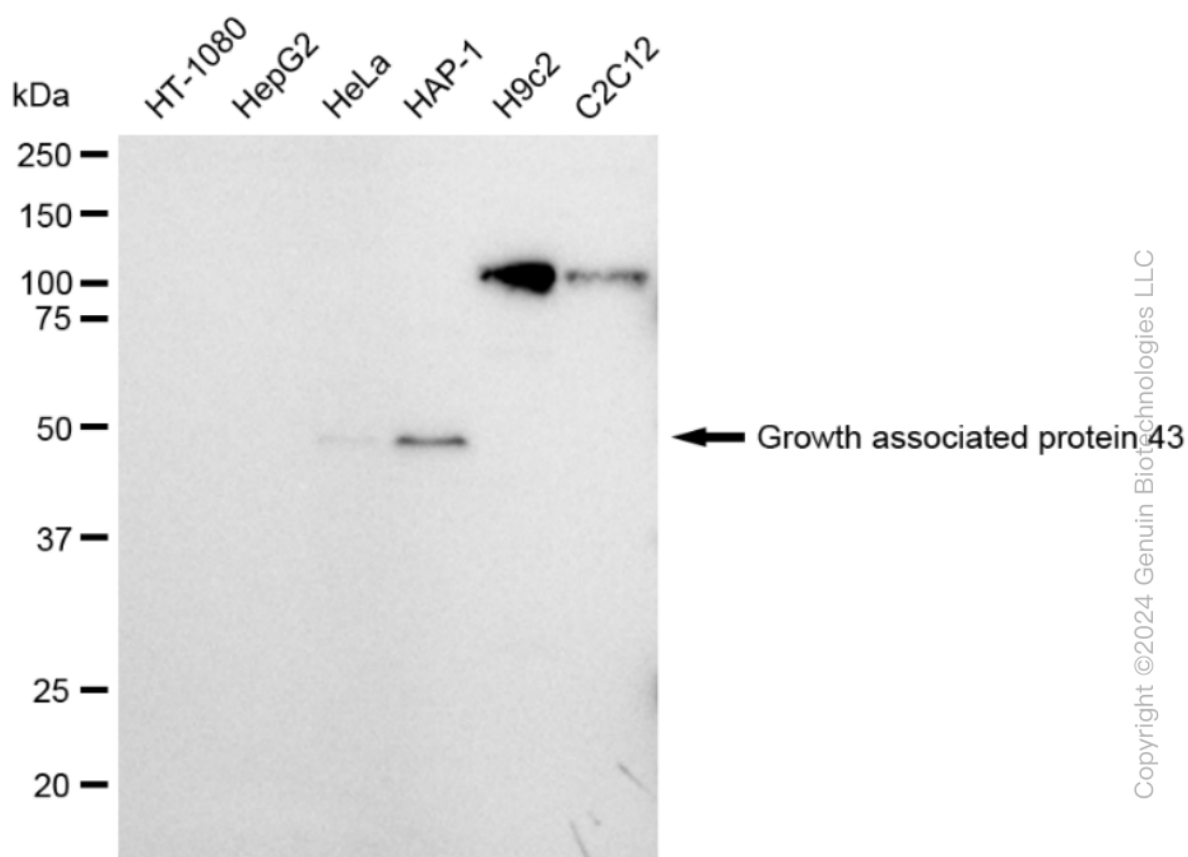
ORDERS

SALES@GENUINBIOTECH.COM
FAX: +1-540-855-7041

WWW.GENUINBIOTECH.COM

KD-Validated Anti-Growth associated protein 43 Recombinant Rabbit Monoclonal Antibody

PAGE 4



Western blotting analysis using anti-Growth associated protein 43 antibody (Cat#63163). Total cell lysates (30 µg) from various cell lines were loaded and separated by SDS-PAGE. The blot was incubated with anti-Growth associated protein 43 antibody (Cat#63163, 1:50,000) and HRP-conjugated goat anti-rabbit secondary antibody (Cat#201, 1:20,000) respectively. Image was developed using FeQ™ ECL Substrate Kit (Cat#226).

SUPPORT

SUPPORT@GENUINBIOTECH.COM
TEL: +1-540-855-7041

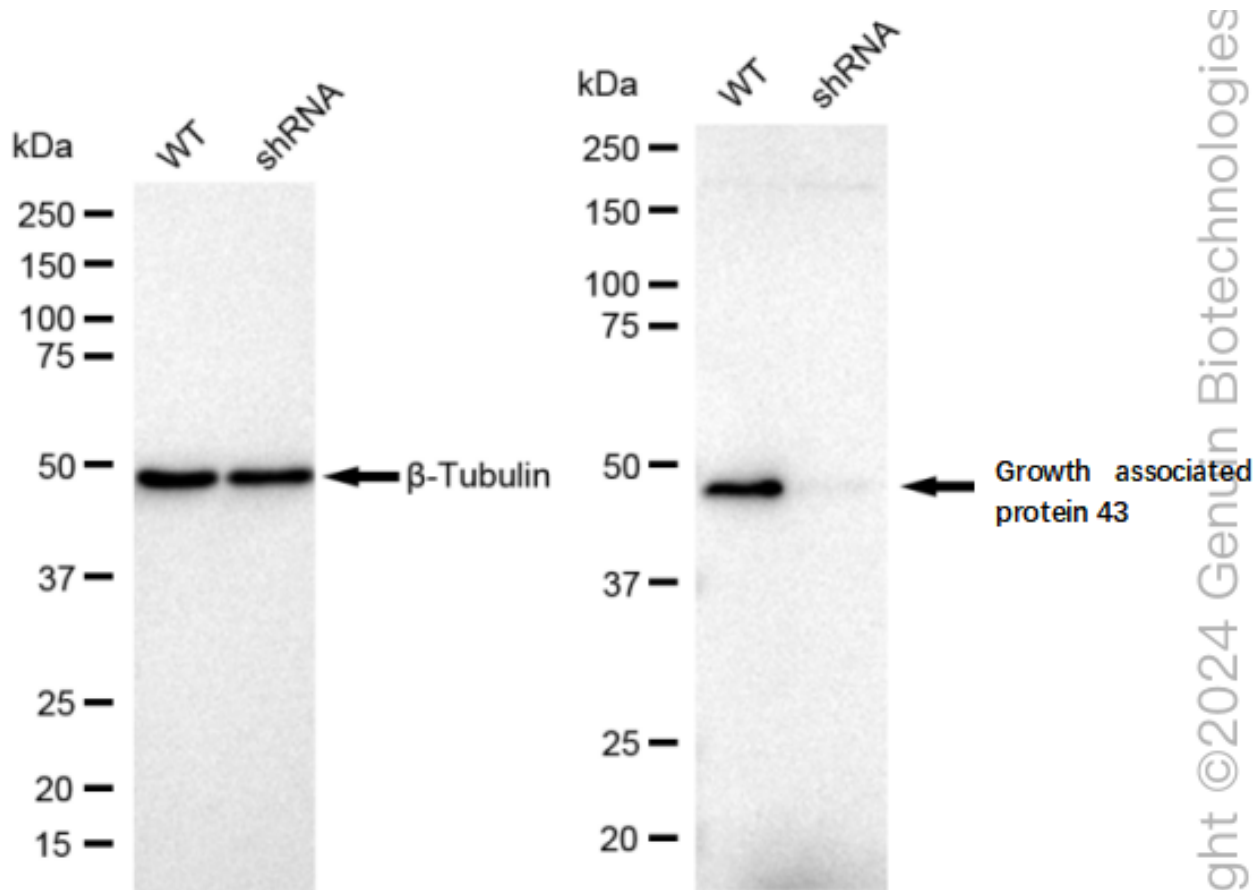
ORDERS

SALES@GENUINBIOTECH.COM
FAX: +1-540-855-7041

WWW.GENUINBIOTECH.COM

KD-Validated Anti-Growth associated protein 43 Recombinant Rabbit Monoclonal Antibody

PAGE 5



Western blotting analysis using anti-Growth associated protein 43 antibody (Cat#63163). Growth associated protein 43 expression in wild type (WT) and growth associated protein 43 shRNA knockdown (KD) HeLa cells with 30 μ g of total cell lysates. β -Tubulin serves as a loading control. The blot was incubated with anti-Growth associated protein 43 antibody (Cat#63163, 1:50,000) and HRP-conjugated goat anti-rabbit secondary antibody (Cat#201, 1:20,000) respectively. Image was developed using FeQTM ECL Substrate Kit (Cat#226).

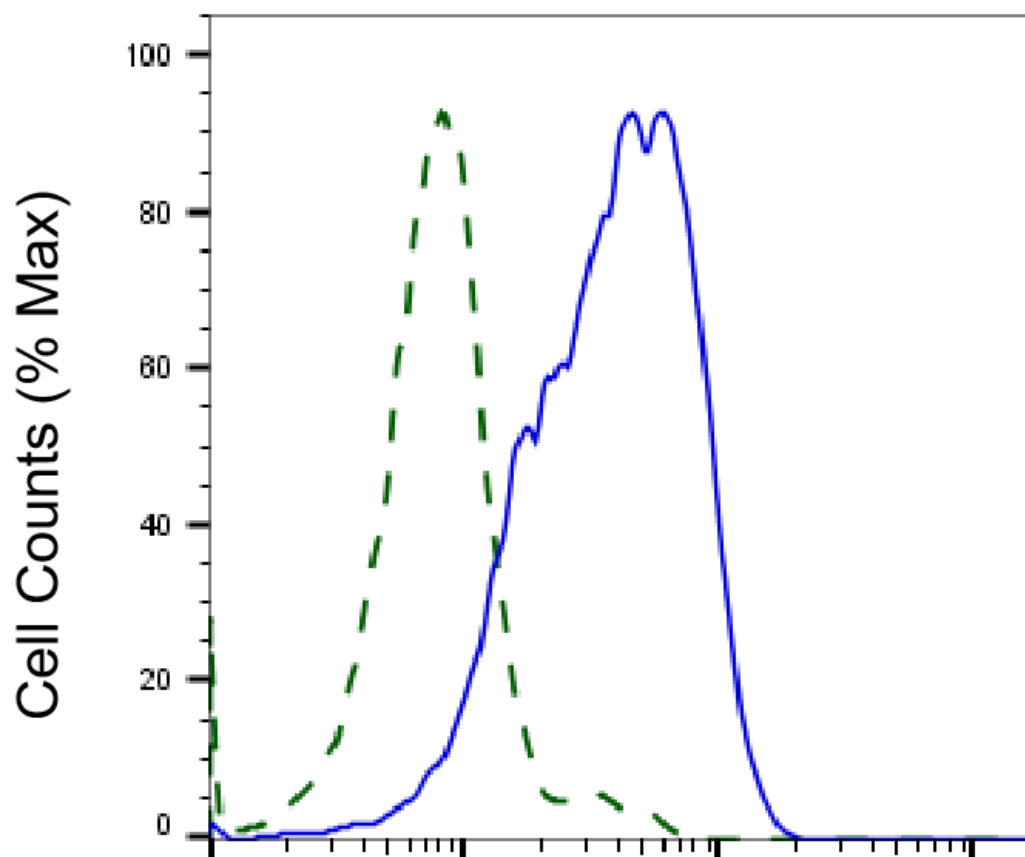
SUPPORT

SUPPORT@GENUINBIOTECH.COM
TEL: +1-540-855-7041

ORDERS

SALES@GENUINBIOTECH.COM
FAX: +1-540-855-7041

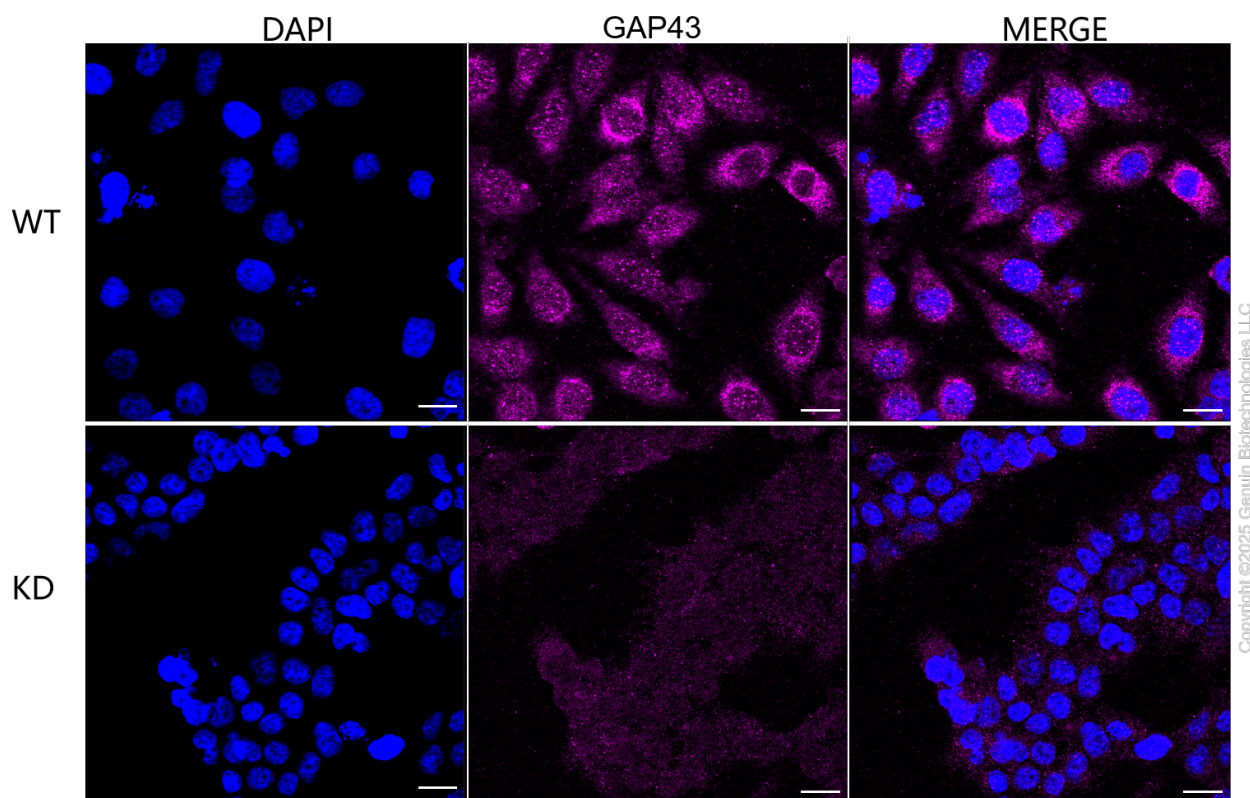
WWW.GENUINBIOTECH.COM



Copyright ©2025 Genuin Biotechnologies LLC

Growth associated protein 43-Alexa Fluor® 647

Validation of Growth associated protein 43 knockdown using flow cytometry. Wild-type(WT, Blue) and knockdown(KD, Green) HeLa cells were stained with anti-Growth associated protein 43 antibody (Cat#63163, 1:2,000) and analyzed using CytoFLEX.



Immunocytochemical staining of HeLa cells using anti-GAP43 antibody (Cat#63163, 1:1,000), Top panel: wild-type (WT); Bottom panel: GAP43 shRNA knockdown (KD). Nuclei were stained blue with DAPI; GAP43 was stained magenta with Alexa Fluor® 647. Scale bar, 20 μ m. Permeabilization: Triton.