

# KD-Validated Anti-Creatine Kinase B type Rabbit Monoclonal Antibody



**Catalog #: 63170**

## Aliases

CKB; Creatine Kinase B; CKBB; Creatine Phosphokinase B-Type; Creatine Kinase Brain-Type; Creatine Kinase B Chain; Creatine Kinase B-Type; Brain Creatine Kinase; EC 2.7.3.2; CPK-B; B-CK; Epididymis Secretory Protein Li; Epididymis Luminal Protein 211; Creatine Kinase, Brain; Creatine Kinase Brain; HEL-S-29; EC 2.7.3; HEL-211; BCK

## Background

Gene Name: CKB

NCBI Gene Entry: [1152](#)

UniProt Entry: [P12277](#)

## Application Information

Molecular Weight: Predicted, 43 kDa, observed, 43 kDa

Clonality: Rabbit monoclonal antibody

Clone ID: 24GB4350

Species Reactivity: Human

Applications Tested: Western blotting (WB), flow cytometry (FCM), immunocytochemistry (IC)

## Immunogen

A synthesized peptide derived from human Creatine kinase B type

## Isotype

Rabbit IgG

## Storage Buffer

Supplied in PBS (pH 7.4) containing 50% glycerol, and 0.02% sodium azide.

## Storage

Store at -20 °C for one year.

## Recommended Dilutions

Western Blotting (WB): 1:1,000-1:5,000

Flow Cytometry (FCM): 1:2,000

Immunocytochemistry (IC): 1:100-1:1,000

---

### SUPPORT

SUPPORT@GENUINBIOTECH.COM  
TEL: +1-540-855-7041

### ORDERS

SALES@GENUINBIOTECH.COM  
FAX: +1-540-855-7041

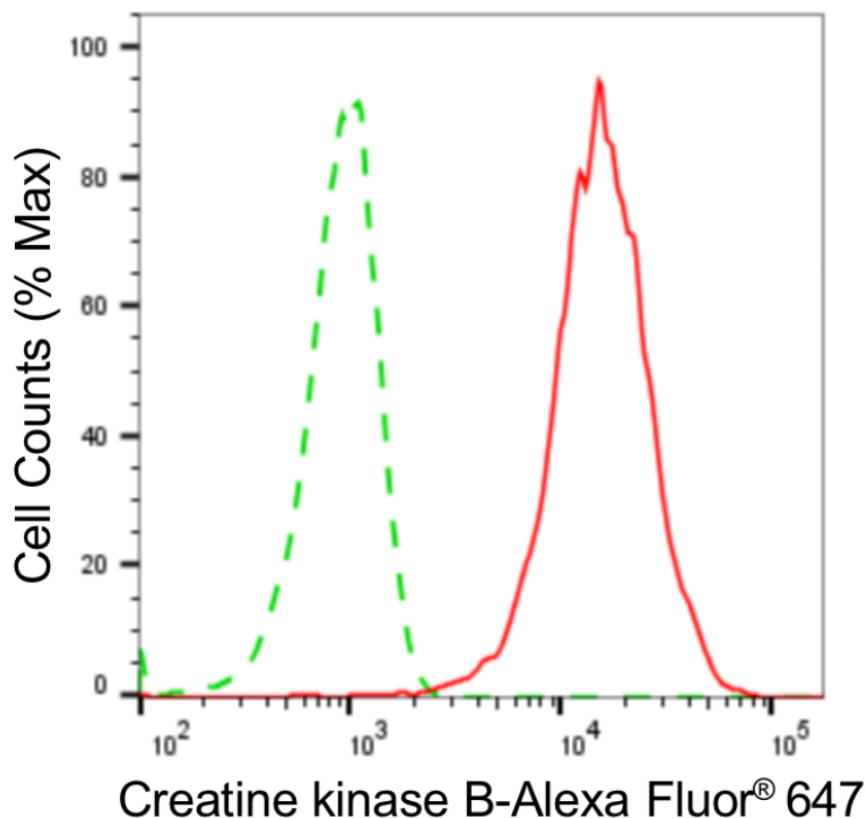
[WWW.GENUINBIOTECH.COM](http://WWW.GENUINBIOTECH.COM)

## KD-Validated Anti-Creatine Kinase B type Rabbit Monoclonal Antibody

PAGE 2

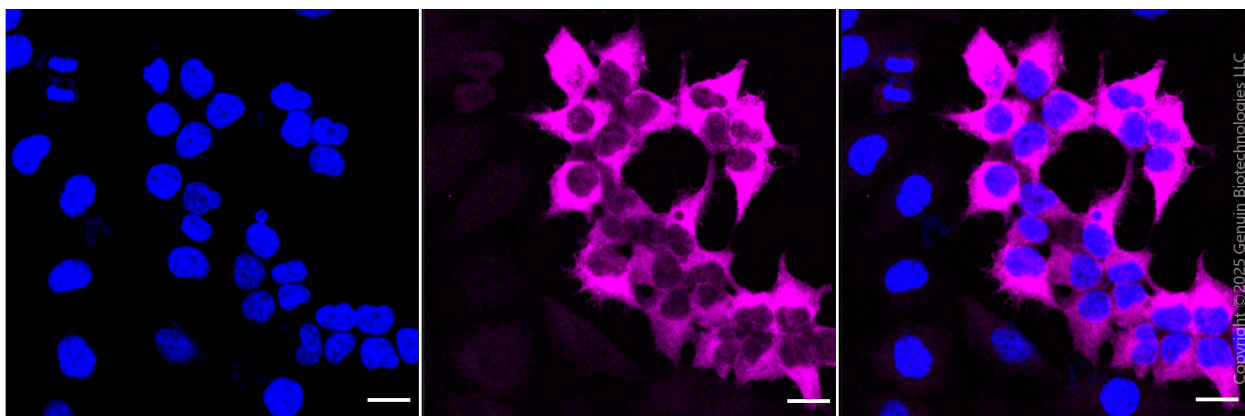
**Note:** This product is for research use only.

### Validation Data



Copyright ©2024 Genuin Biotechnologies LLC

Flow cytometric analysis of Creatine kinase B expression in HeLa cells using anti-Creatine kinase B antibody (Cat#63170, 1:2,000). Green, isotype control; red, Creatine kinase B.



Immunocytochemical staining of HeLa cells with creatine kinase B antibody (Cat#63170, 1:1,000). Nuclei were stained blue with DAPI; Creatine kinase B was stained magenta with Alexa Fluor® 647. Images were taken using Leica stellaris 5. Protein abundance based on laser Intensity and smart gain: High. Scale bar: 20 µm.

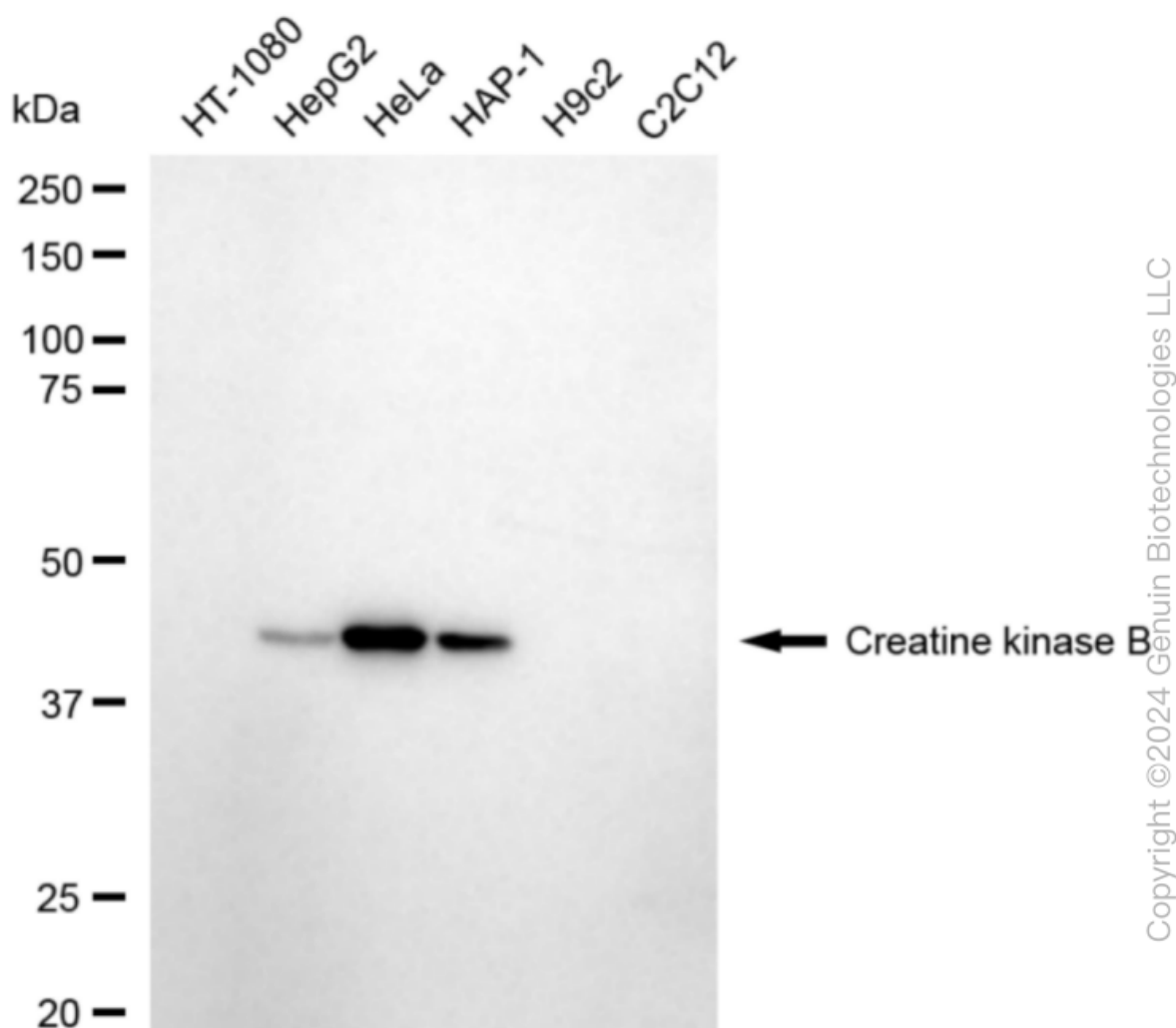
#### SUPPORT

SUPPORT@GENUINBIOTECH.COM  
TEL: +1-540-855-7041

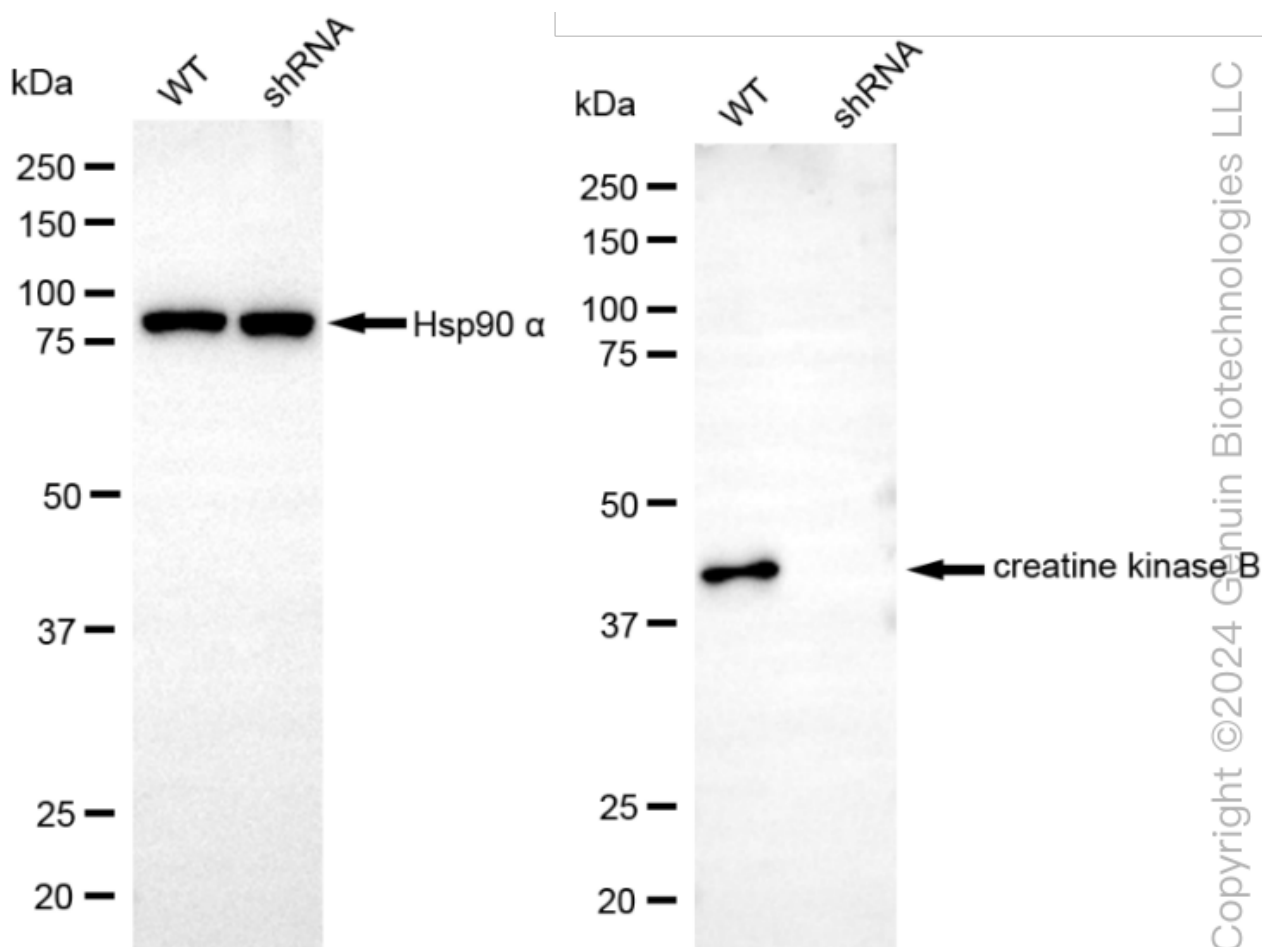
#### ORDERS

SALES@GENUINBIOTECH.COM  
FAX: +1-540-855-7041

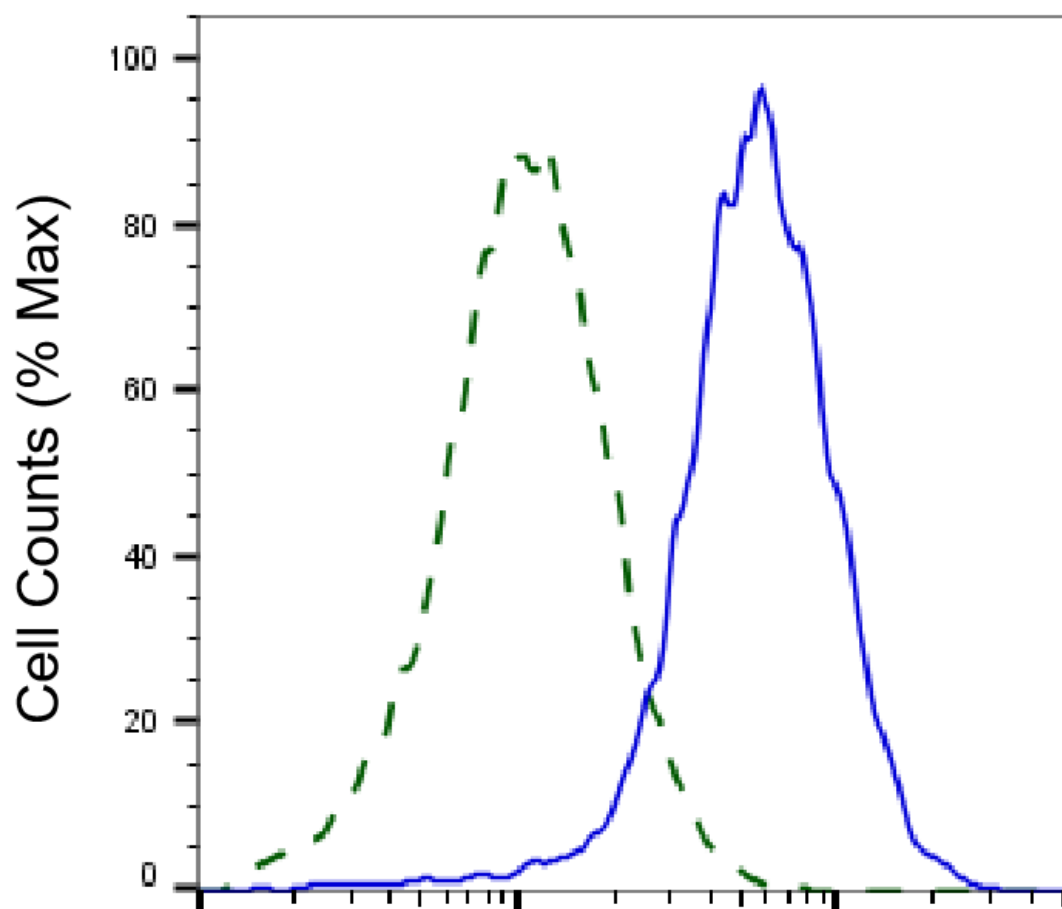
WWW.GENUINBIOTECH.COM



Western blotting analysis using anti-creatine kinase B antibody (Cat#63170). Total cell lysates (30 µg) from various cell lines were loaded and separated by SDS-PAGE. The blot was incubated with anti-creatine kinase B antibody (Cat#63170, 1:5,000) and HRP-conjugated goat anti-rabbit secondary antibody (Cat#201, 1:20,000) respectively. Image was developed using FeQ™ ECL Substrate Kit (Cat#226).



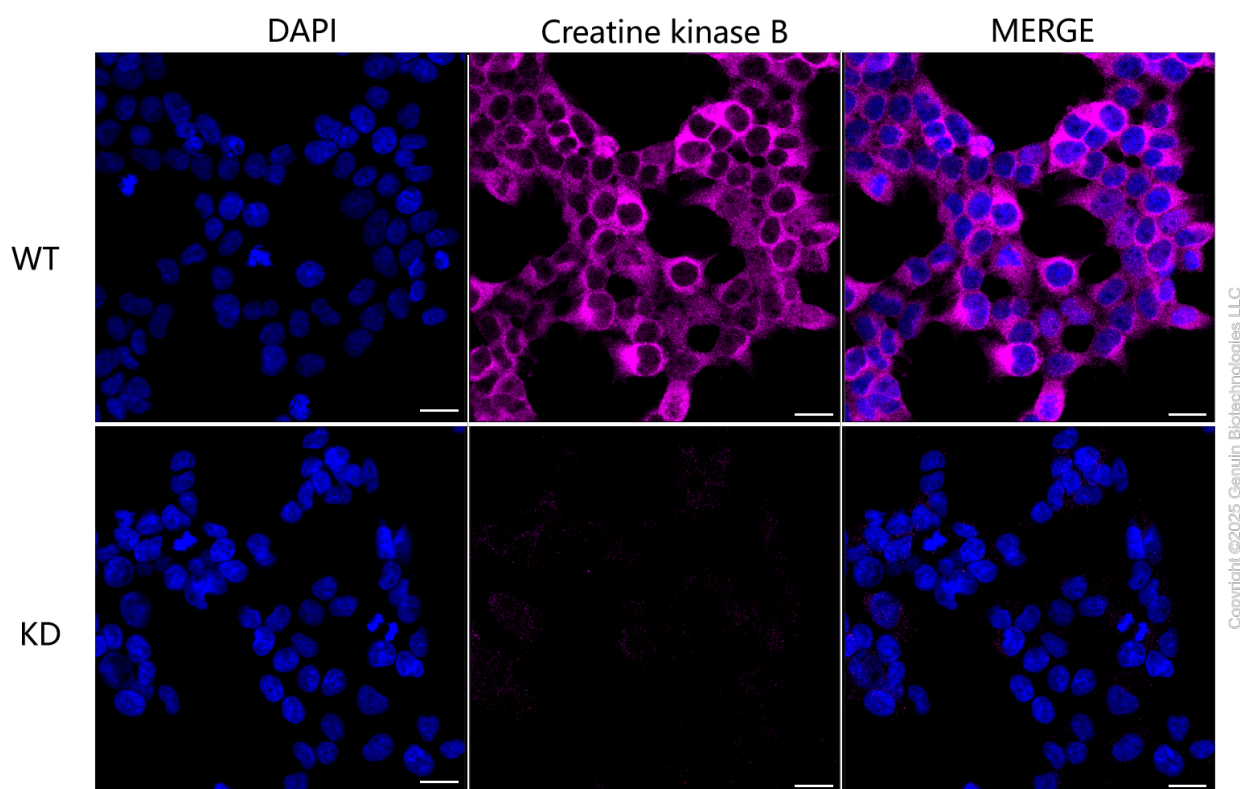
Western blotting analysis using anti-creatine kinase B antibody (Cat#63170). Creatine kinase B expression in wild-type (WT) and creatine kinase B (CKB) shRNA knockdown (KD) HeLa cells with 20 µg of total cell lysates. Hsp90 α serves as a loading control. The blot was incubated with anti-creatine kinase B antibody (Cat#63170, 1:5,000) and HRP-conjugated goat anti-rabbit secondary antibody (Cat#201, 1:20,000) respectively. Image was developed using NaQ™ ECL Substrate Kit (Cat#716).



Copyright ©2025 Genuin Biotechnologies LLC

## Creatine kinase B-Alexa Fluor® 647

Validation of Creatine kinase B knockdown using flow cytometry. Wild-type(WT, Blue) and knockdown(KD, Green) HeLa cells were stained with anti-Creatine kinase B antibody (Cat#63170, 1:2,000) and analyzed using BD flow cytometer.



Immunocytochemical staining of HeLa cells using anti-Creatine kinase B antibody (Cat#63170, 1:1,000), Top panel: wild-type (WT); Bottom panel: Creatine kinase B shRNA knockdown (KD). Nuclei were stained blue with DAPI; Creatine kinase B was stained magenta with Alexa Fluor® 647. Scale bar, 20  $\mu$ m. Permeabilization: Triton.