

KD-Validated Anti-EIF4EBP1 Rabbit Monoclonal Antibody



Catalog #: 63184

Aliases

EIF4EBP1; Eukaryotic Translation Initiation Factor 4E Binding Protein 1; PHAS-I ; 4E-BP1; Phosphorylated Heat- And Acid-Stable Protein Regulated By Insulin 1; Eukaryotic Translation Initiation Factor 4E-Binding Protein 1; EIF4E-Binding Protein 1; 4EBP1; BP-1

Background

Gene Name: EIF4EBP1

NCBI Gene Entry: [1978](#)

UniProt Entry: [Q13541](#)

Application Information

Molecular Weight: Predicted, 13 kDa, observed, 15-20 kDa

Clonality: Rabbit monoclonal antibody

Clone ID: 24GB4410

Species Reactivity: Human, mouse, rat

Applications Tested: Western blotting (WB), flow cytometry (FCM), immunocytochemistry (IC)

Immunogen

A synthesized peptide derived from human eIF4EBP1

Isotype

Rabbit IgG

Storage Buffer

Supplied in PBS (pH 7.4) containing 50% glycerol, and 0.02% sodium azide.

Storage

Store at -20 °C for one year.

Recommended Dilutions

Western Blotting (WB): 1:1,000-1:5,000

Flow Cytometry (FCM): 1:2,000

Immunocytochemistry (IC): 1:100-1:1,000

Note: This product is for research use only.

SUPPORT

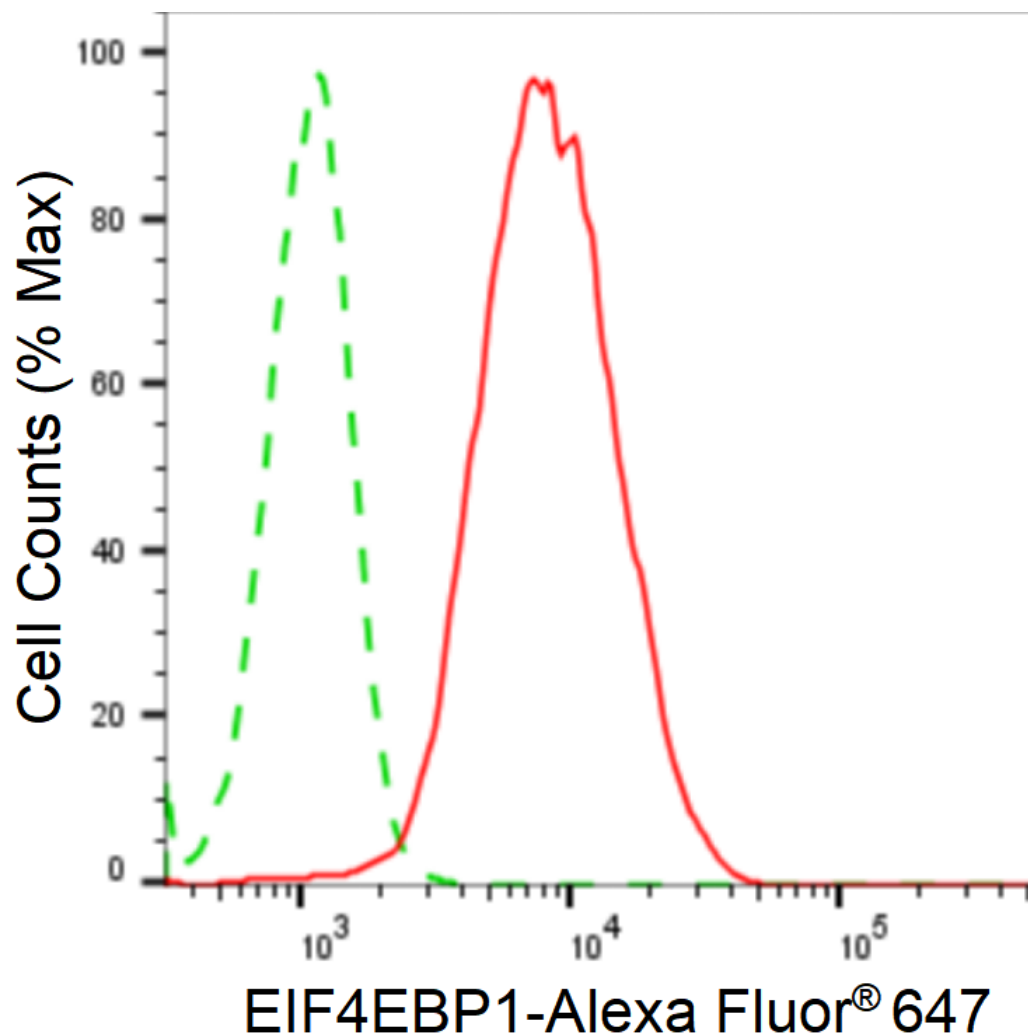
SUPPORT@GENUINBIOTECH.COM
TEL: +1-540-855-7041

ORDERS

SALES@GENUINBIOTECH.COM
FAX: +1-540-855-7041

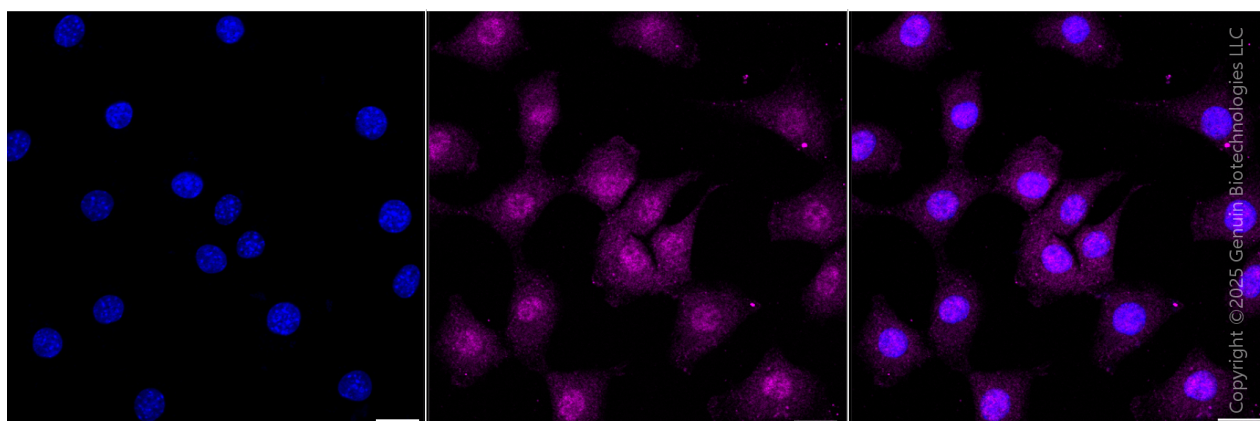
WWW.GENUINBIOTECH.COM

Validation Data



Copyright ©2025 Genuin Biotechnologies LLC

Flow cytometric analysis of EIF4EBP1 expression in C2C12 cells using anti-EIF4EBP1 antibody (Cat#63184, 1:2,000). Green, isotype control; red, EIF4EBP1.



Copyright ©2025 Genuin Biotechnologies LLC

Immunocytochemical staining of C2C12 cells with anti-EIF4EBP1 antibody (Cat#63184,

SUPPORT

SUPPORT@GENUINBIOTECH.COM
TEL: +1-540-855-7041

ORDERS

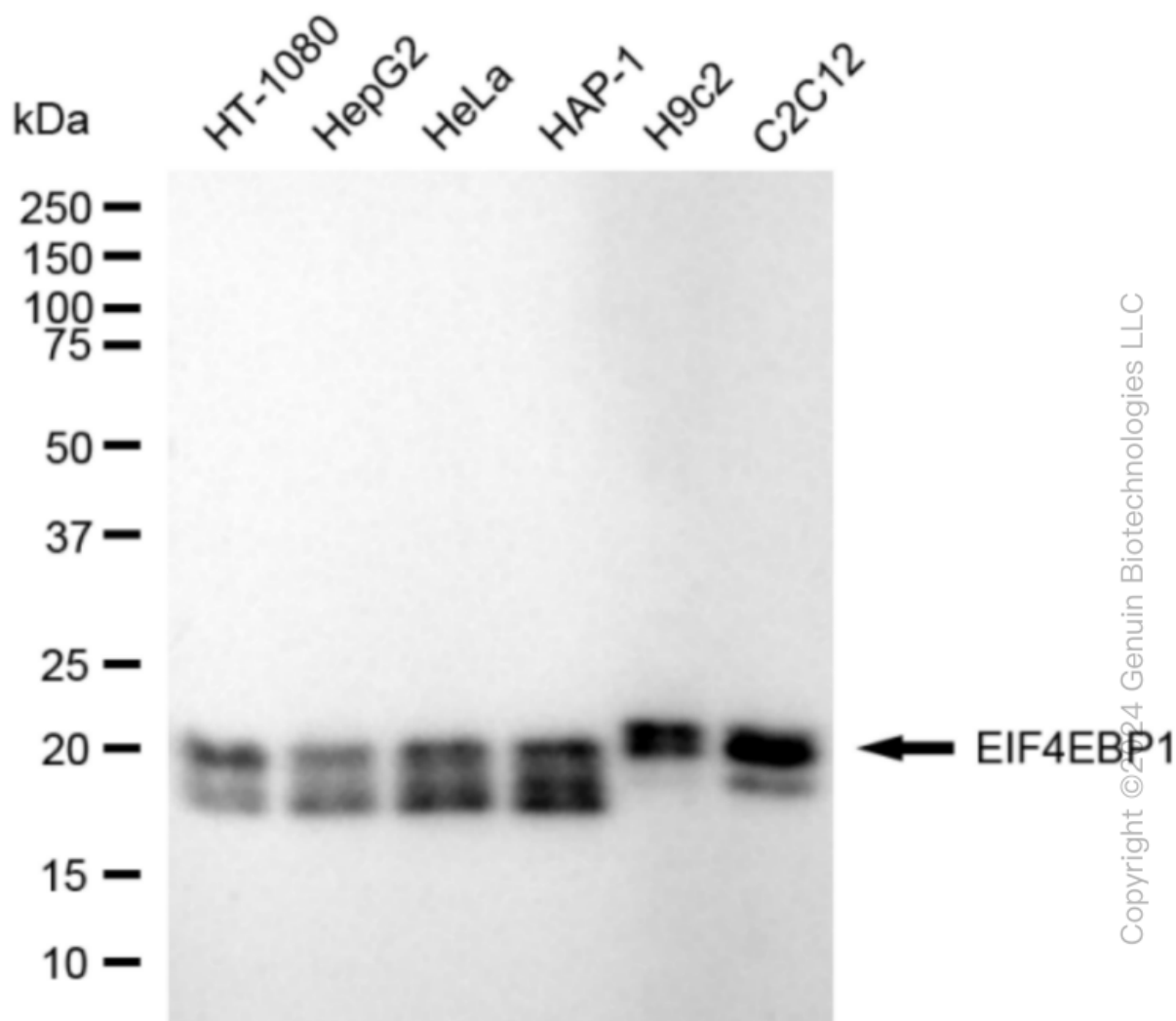
SALES@GENUINBIOTECH.COM
FAX: +1-540-855-7041

WWW.GENUINBIOTECH.COM

KD-Validated Anti-EIF4EBP1 Rabbit Monoclonal Antibody

PAGE 3

1:1,000). Nuclei were stained blue with DAPI; EIF4EBP1 was stained magenta with Alexa Fluor® 647. Images were taken using Leica stellaris 5. Protein abundance based on laser Intensity and Smart Gain: Medium. Scale bar, 20 μ m.



Western blotting analysis using anti-EIF4EBP1 antibody (Cat#63184). Total cell lysates (30 μ g) from various cell lines were loaded and separated by SDS-PAGE. The blot was incubated with anti-EIF4EBP1 antibody (Cat#63184, 1:5,000) and HRP-conjugated goat anti-rabbit secondary antibody (Cat#201, 1:20,000) respectively. Image was developed using FeQ™ ECL Substrate Kit (Cat#226). EIF4EBP1, eukaryotic translation initiation factor 4E binding protein 1.

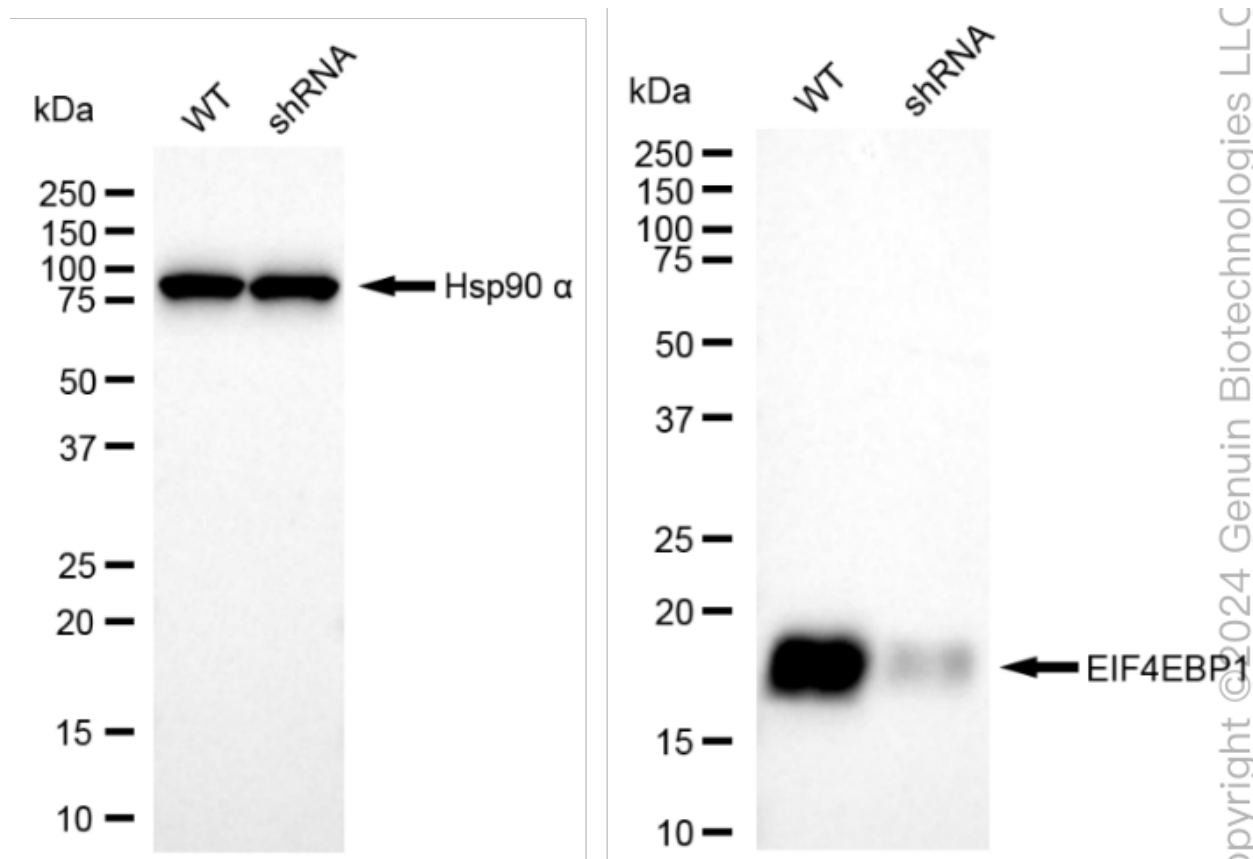
SUPPORT

SUPPORT@GENUINBIOTECH.COM
TEL: +1-540-855-7041

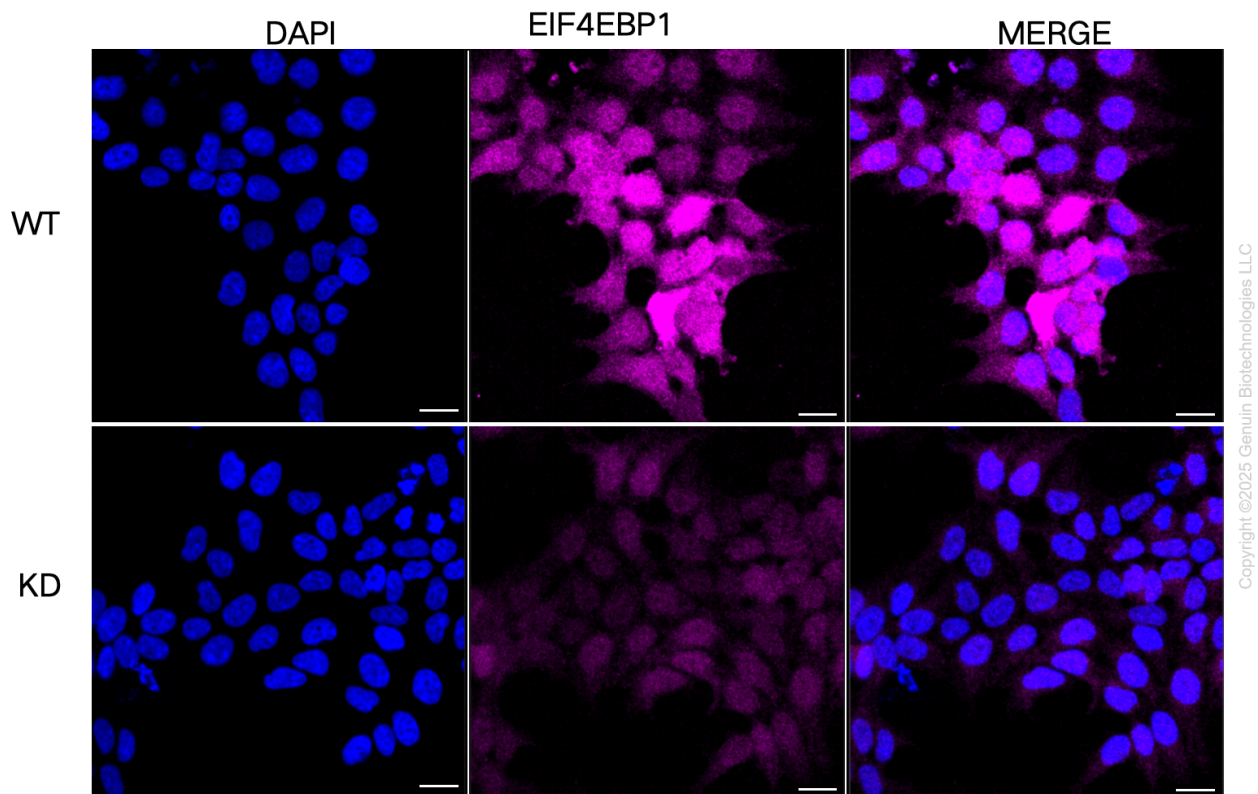
ORDERS

SALES@GENUINBIOTECH.COM
FAX: +1-540-855-7041

WWW.GENUINBIOTECH.COM



Western blotting analysis using anti-EIF4EBP1 antibody (Cat#63184). EIF4EBP1 expression in wild-type (WT) and EIF4EBP1 shRNA knockdown (KD) HeLa cells with 20 µg of total cell lysates. β-Tubulin serves as a loading control. The blot was incubated with anti-EIF4EBP1 antibody (Cat#63184, 1:5,000) and HRP-conjugated goat anti-rabbit secondary antibody (Cat#201, 1:20,000) respectively. Image was developed using NaQ™ ECL Substrate Kit (Cat#716).



Immunocytochemical staining of HeLa cells using anti-EIF4EBP1 antibody (Cat#63184, 1:1,000), Top panel: wild-type (WT); Bottom panel: EIF4EBP1 shRNA knockdown (KD). Nuclei were stained blue with DAPI; EIF4EBP1 was stained magenta with Alexa Fluor® 647. Scale bar, 20 μ m.