

KD-Validated Anti-Fibroblast Growth Factor 2 Rabbit Monoclonal Antibody



Catalog #: 63186

Aliases

FGF2; Fibroblast Growth Factor 2; FGFB; Fibroblast Growth Factor 2 (Basic); Heparin-Binding Growth Factor 2; HBGF-2; FGF-2; BFGF; Basic Fibroblast Growth Factor BFGF; Basic Fibroblast Growth Factor; Prostatropin

Background

Gene Name: FGF2

NCBI Gene Entry: [2247](#)

UniProt Entry: [P09038](#)

Application Information

Molecular Weight: Predicted, 31 kDa, observed, 18-24kDa

Clonality: Rabbit monoclonal antibody

Clone ID: 24GB4420

Species Reactivity: Human

Applications Tested: Western blotting (WB), flow cytometry (FCM), immunocytochemistry (IC)

Immunogen

Recombinant protein of human FGF2

Isotype

Rabbit IgG

Storage Buffer

Supplied in PBS (pH 7.4) containing 50% glycerol, and 0.02% sodium azide.

Storage

Store at -20 °C for one year.

Recommended Dilutions

Western Blotting (WB): 1:1,000-1:5,000

Flow Cytometry (FCM): 1:2,000

Immunocytochemistry (IC): 1:100-1:1,000

Note: This product is for research use only.

SUPPORT

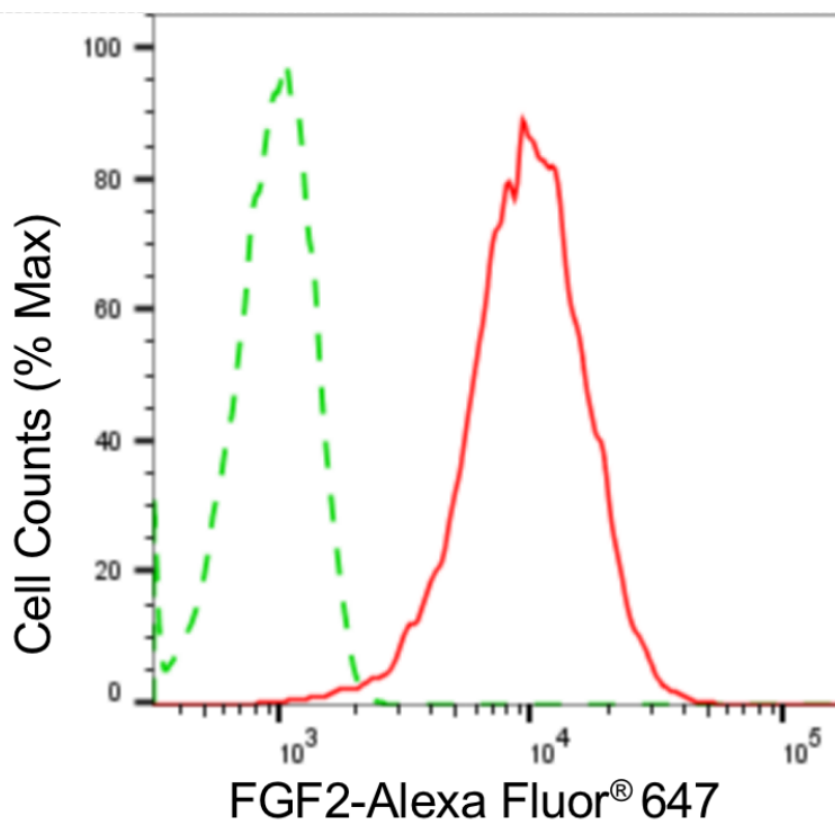
SUPPORT@GENUINBIOTECH.COM
TEL: +1-540-855-7041

ORDERS

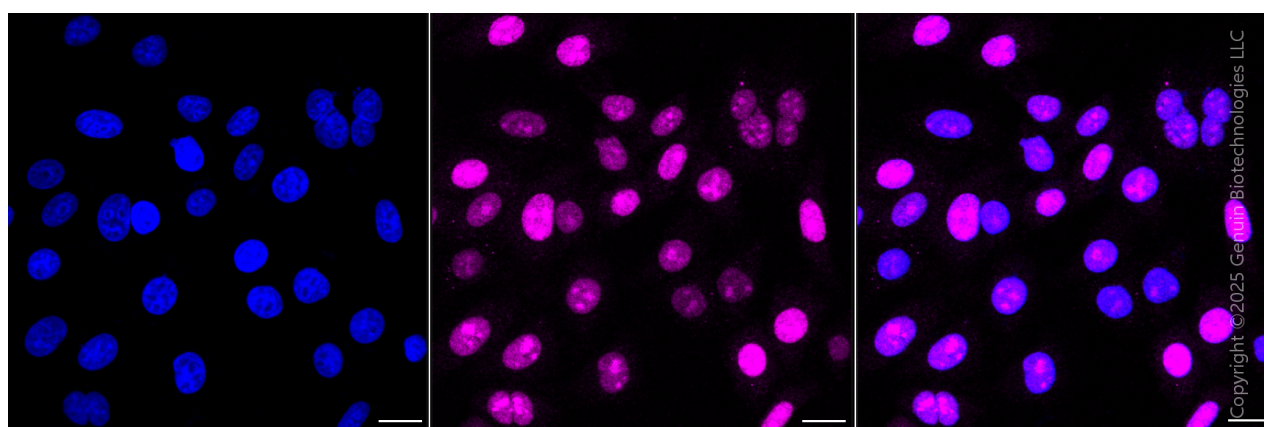
SALES@GENUINBIOTECH.COM
FAX: +1-540-855-7041

WWW.GENUINBIOTECH.COM

Validation Data



Copyright ©2024 Genuin Biotechnologies LLC



Copyright ©2025 Genuin Biotechnologies LLC

SUPPORT

SUPPORT@GENUINBIOTECH.COM
TEL: +1-540-855-7041

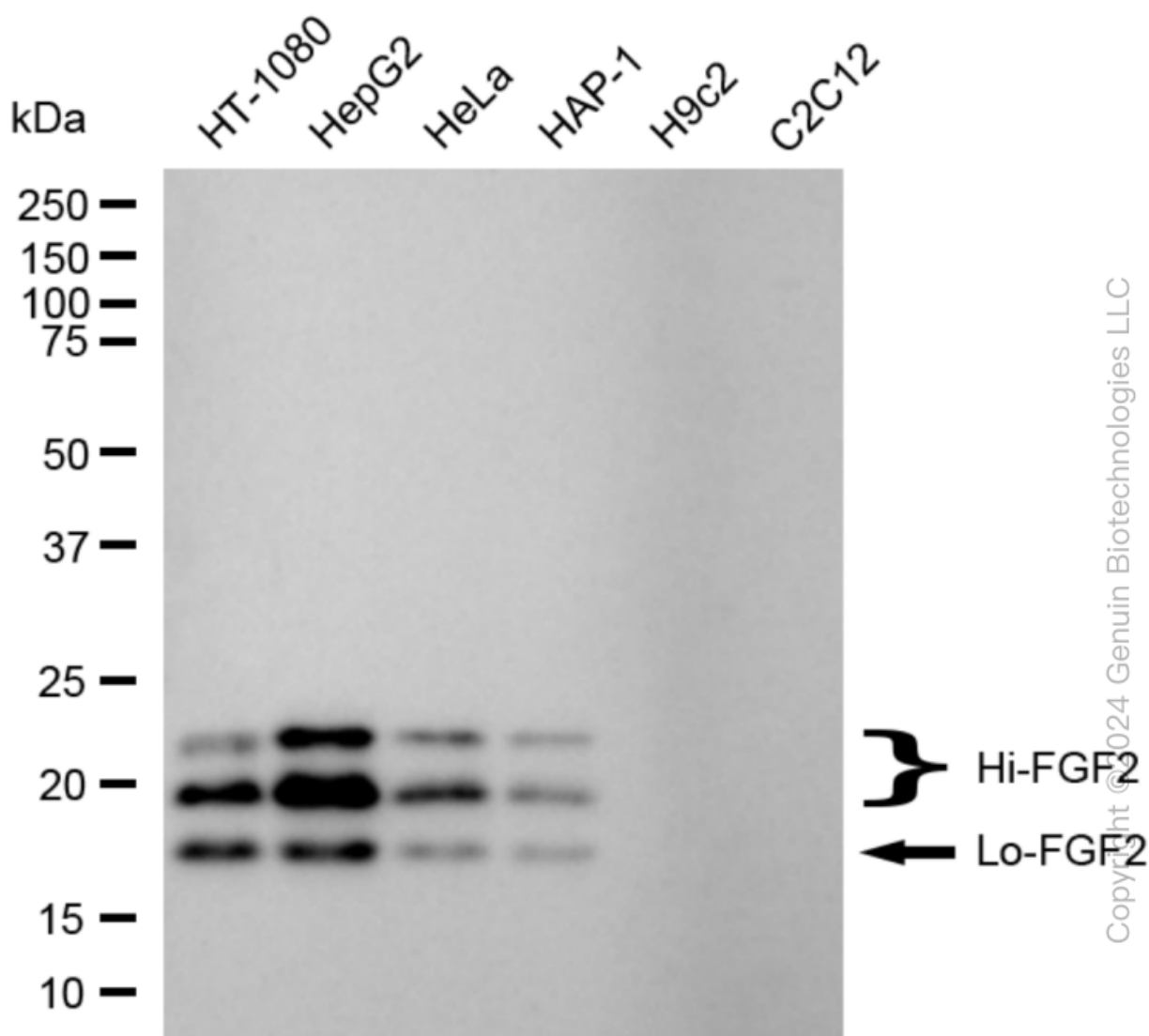
ORDERS

SALES@GENUINBIOTECH.COM
FAX: +1-540-855-7041

WWW.GENUINBIOTECH.COM

KD-Validated Anti-Fibroblast Growth Factor 2 Rabbit Monoclonal Antibody

PAGE 3



Western blotting analysis using anti-FGF2 antibody (Cat#63186). Total cell lysates (30 µg) from various cell lines were loaded and separated by SDS-PAGE. The blot was incubated with anti-FGF2 antibody (Cat#63186, 1:5,000) and HRP-conjugated goat anti-rabbit secondary antibody (Cat#201, 1:20,000) respectively. Image was developed using FeQ™ ECL Substrate Kit (Cat#226). FGF2, fibroblast growth factor 2.

SUPPORT

SUPPORT@GENUINBIOTECH.COM
TEL: +1-540-855-7041

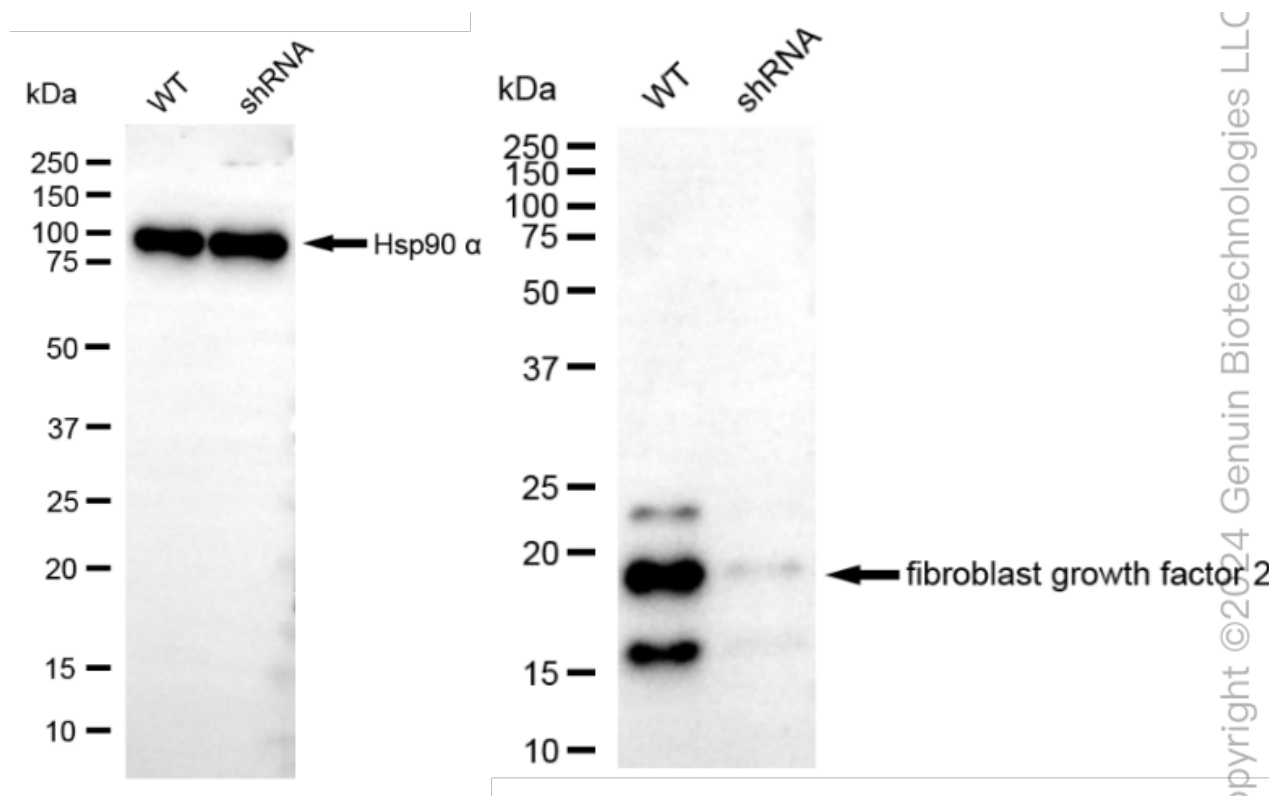
ORDERS

SALES@GENUINBIOTECH.COM
FAX: +1-540-855-7041

WWW.GENUINBIOTECH.COM

KD-Validated Anti-Fibroblast Growth Factor 2 Rabbit Monoclonal Antibody

PAGE 4



Western blotting analysis using anti-fibroblast growth factor 2 antibody (Cat#63186). Fibroblast growth factor 2 expression in wild-type (WT) and fibroblast growth factor 2 (FGF2) shRNA knockdown (KD) HeLa cells with 20 µg of total cell lysates. β-Tubulin serves as a loading control. The blot was incubated with anti-fibroblast growth factor 2 antibody (Cat#63186, 1:5,000) and HRP-conjugated goat anti-rabbit secondary antibody (Cat#201, 1:20,000) respectively. Image was developed using NaQ™ ECL Substrate Kit (Cat#716).

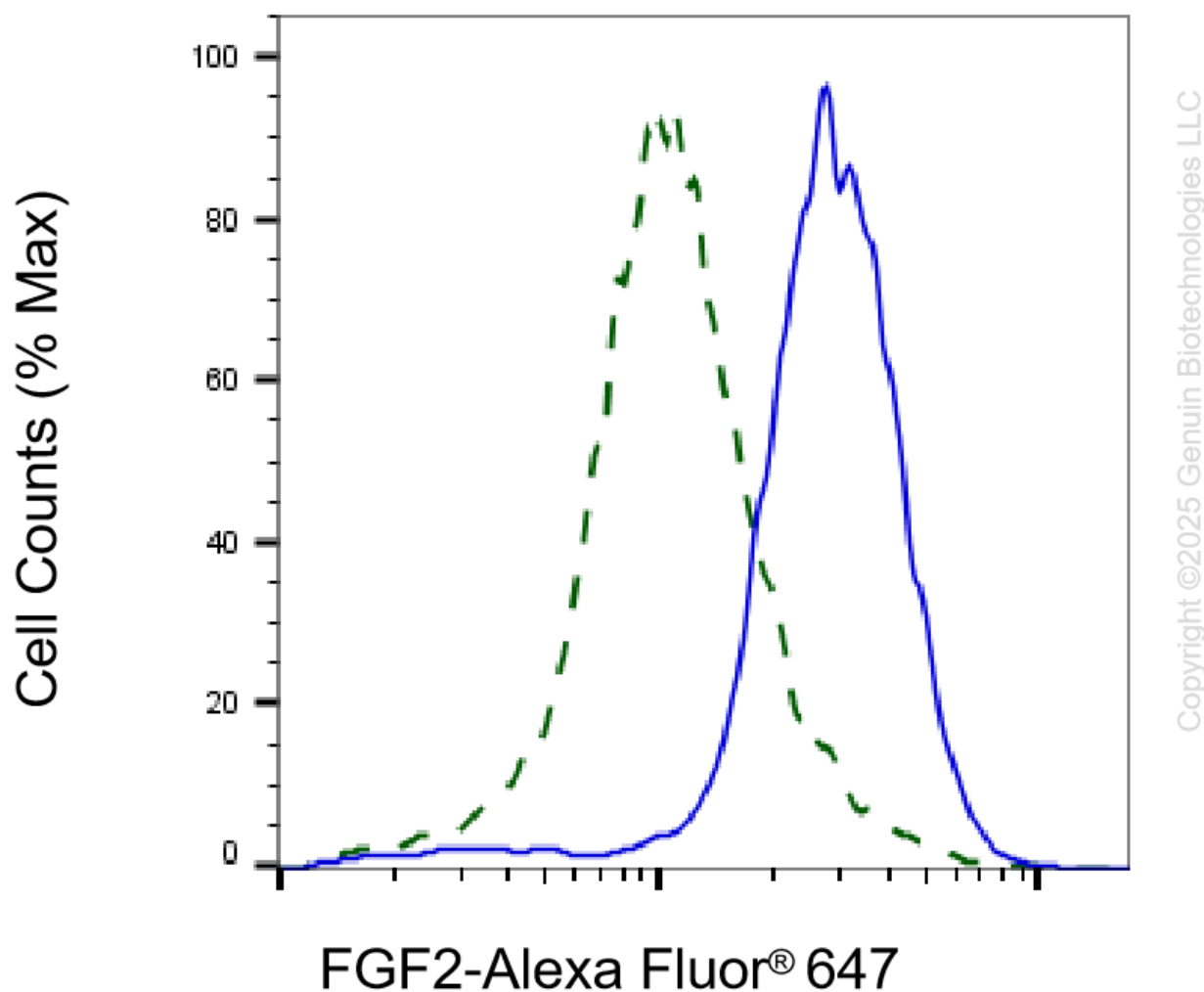
SUPPORT

SUPPORT@GENUINBIOTECH.COM
TEL: +1-540-855-7041

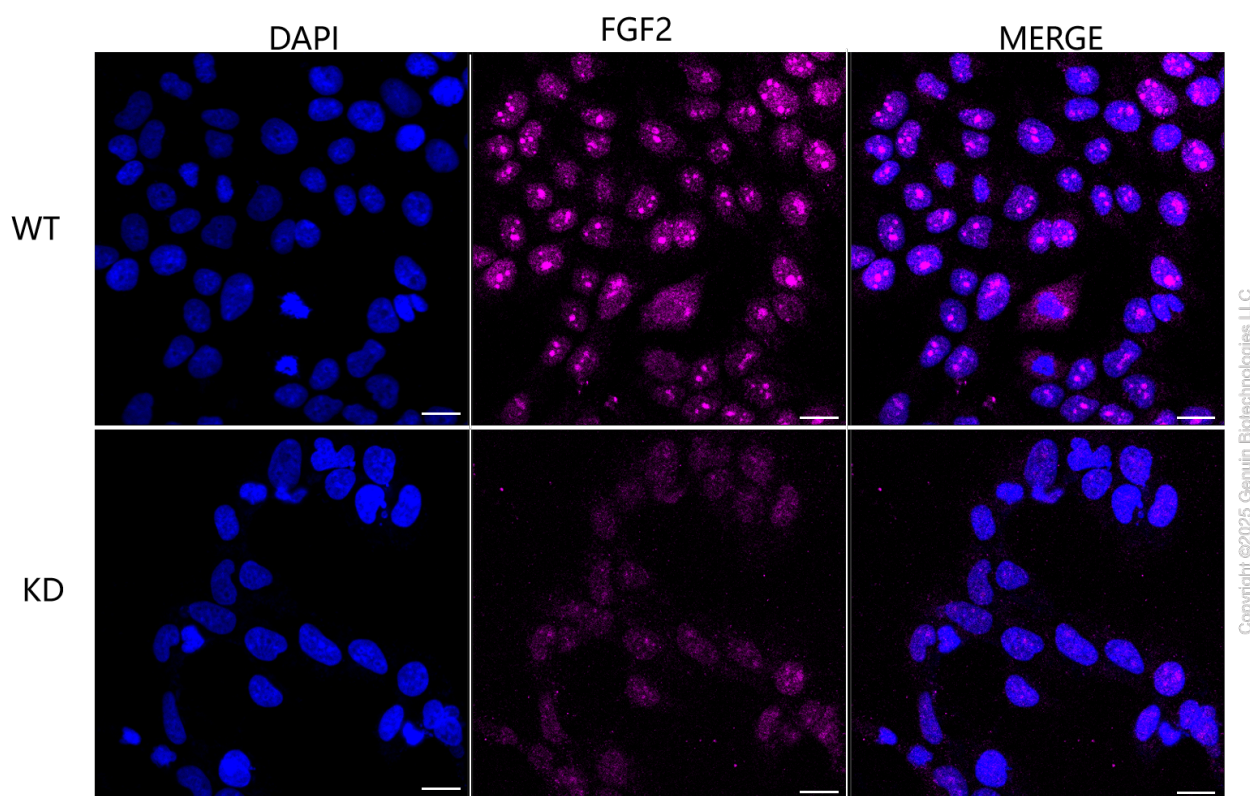
ORDERS

SALES@GENUINBIOTECH.COM
FAX: +1-540-855-7041

WWW.GENUINBIOTECH.COM



Validation of FGF2 knockdown using flow cytometry. Wild-type(WT, Blue) and knockdown(KD, Green) HeLa cells were stained with anti-FGF2 antibody (Cat#63186, 1:2,000) and analyzed using BD flow cytometer.



Immunocytochemical staining of HeLa cells using anti-FGF2 antibody (Cat#63186, 1:1,000), Top panel: wild-type (WT); Bottom panel: FGF2 shRNA knockdown (KD). Nuclei were stained blue with DAPI; FGF2 was stained magenta with Alexa Fluor® 647. Scale bar, 20 μ m.