

KD-Validated Anti-Glutathione Peroxidase 1 Rabbit Monoclonal Antibody



Catalog #: 63187

Aliases

GPX1; Glutathione Peroxidase 1; Cellular Glutathione Peroxidase; Selenoprotein GPX1; EC 1.11.1.9; GSHPx-1; EC 1.11.1; GSHPX1; GPx-1; GPXD

Background

Gene Name: GPX1

NCBI Gene Entry: [2876](#)

UniProt Entry: [P07203](#)

Application Information

Molecular Weight: Predicted, 22 kDa, observed, 20 kDa

Clonality: Rabbit monoclonal antibody

Clone ID: 24GB4425

Species Reactivity: Human, rat

Applications Tested: Western blotting (WB), flow cytometry (FCM), immunocytochemistry (IC)

Immunogen

A synthesized peptide derived from human Glutathione Peroxidase 1

Isotype

Rabbit IgG

Storage Buffer

Supplied in PBS (pH 7.4) containing 50% glycerol, and 0.02% sodium azide.

Storage

Store at -20 °C for one year.

Recommended Dilutions

Western Blotting (WB): 1:1,000-1:5,000

Flow Cytometry (FCM): 1:2,000

Immunocytochemistry (IC): 1:100-1:1,000

Note: This product is for research use only.

Validation Data

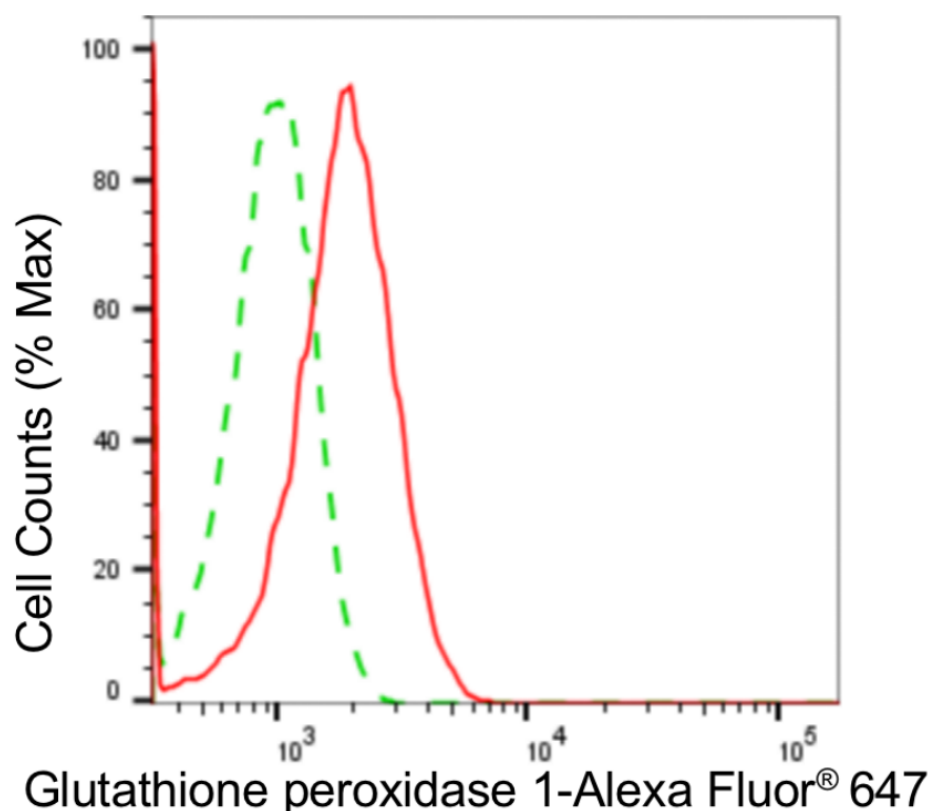
SUPPORT

SUPPORT@GENUINBIOTECH.COM
TEL: +1-540-855-7041

ORDERS

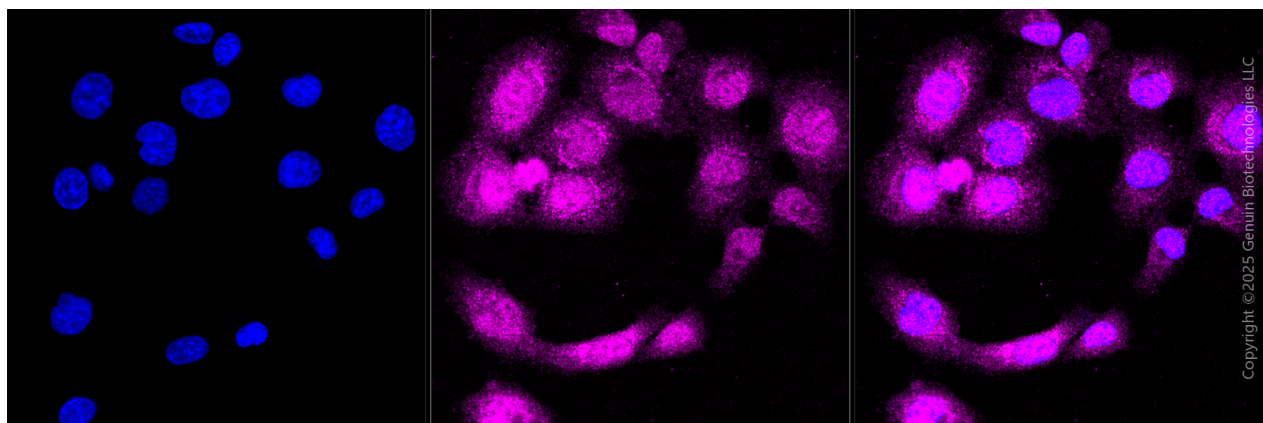
SALES@GENUINBIOTECH.COM
FAX: +1-540-855-7041

WWW.GENUINBIOTECH.COM



Copyright ©2024 Genuin Biotechnologies LLC

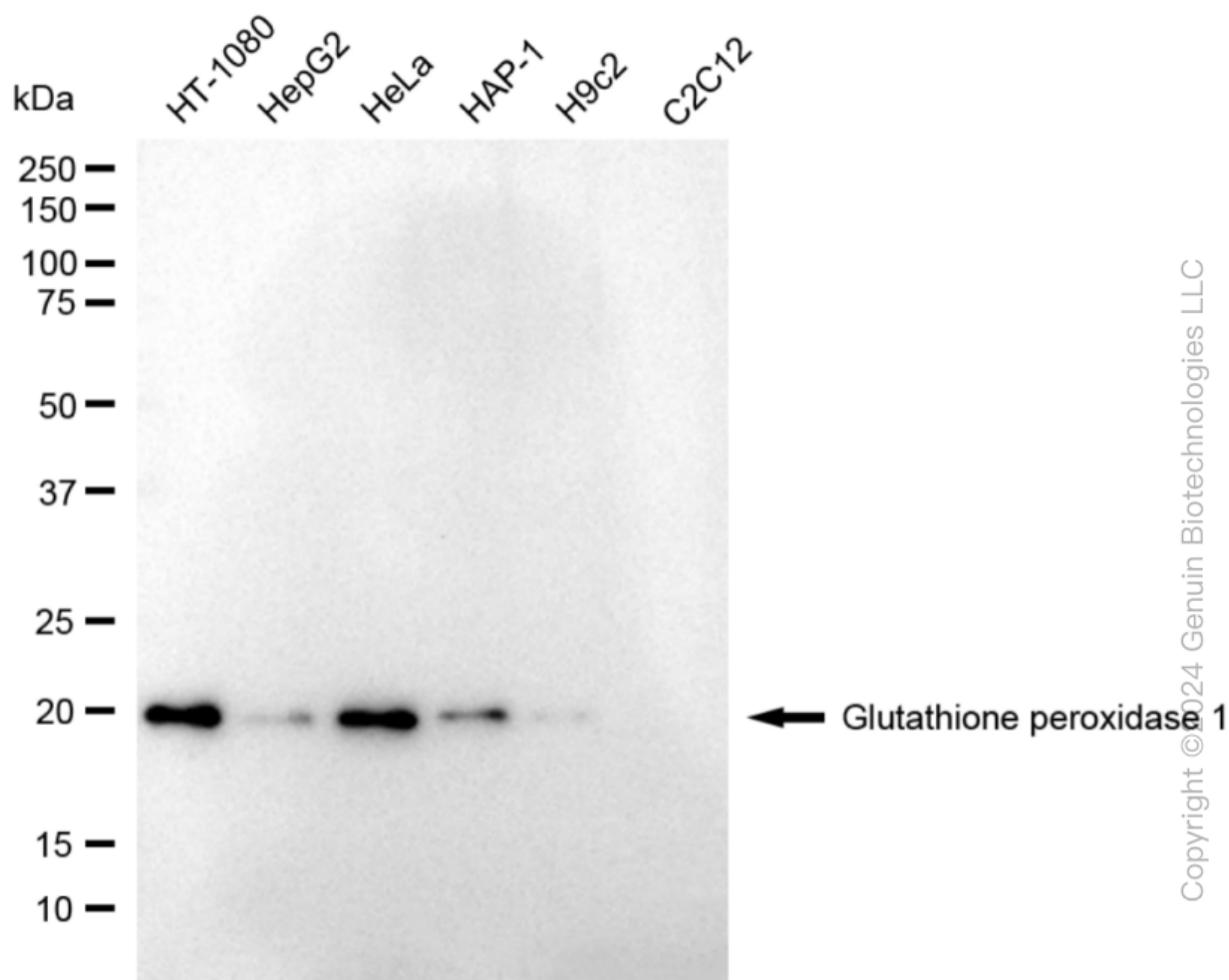
Flow cytometric analysis of glutathione peroxidase 1 expression in HT-1080 cells using anti-glutathione peroxidase 1 antibody (Cat#63187, 1:2,000). Green, isotype control; red, glutathione peroxidase 1.



Immunocytochemical staining of HT-1080 cells with anti-Glutathione peroxidase 1 antibody (Cat #63187, 1:1,000). Nuclei were stained blue with DAPI; Glutathione peroxidase 1 was stained magenta with Alexa Fluor® 647. Images were taken using Leica stellaris 5. Protein abundance based on laser Intensity and smart gain: Medium. Scale bar, 20 μ m.

KD-Validated Anti-Glutathione Peroxidase 1 Rabbit Monoclonal Antibody

PAGE 3



Western blotting analysis using anti-glutathione peroxidase 1 antibody (Cat#63187). Total cell lysates (30 µg) from various cell lines were loaded and separated by SDS-PAGE. The blot was incubated with anti-glutathione peroxidase 1 antibody (Cat#63187, 1:5,000) and HRP-conjugated goat anti-rabbit secondary antibody (Cat#201, 1:20,000) respectively. Image was developed using NaQ™ ECL Substrate Kit (Cat#716).

SUPPORT

SUPPORT@GENUINBIOTECH.COM
TEL: +1-540-855-7041

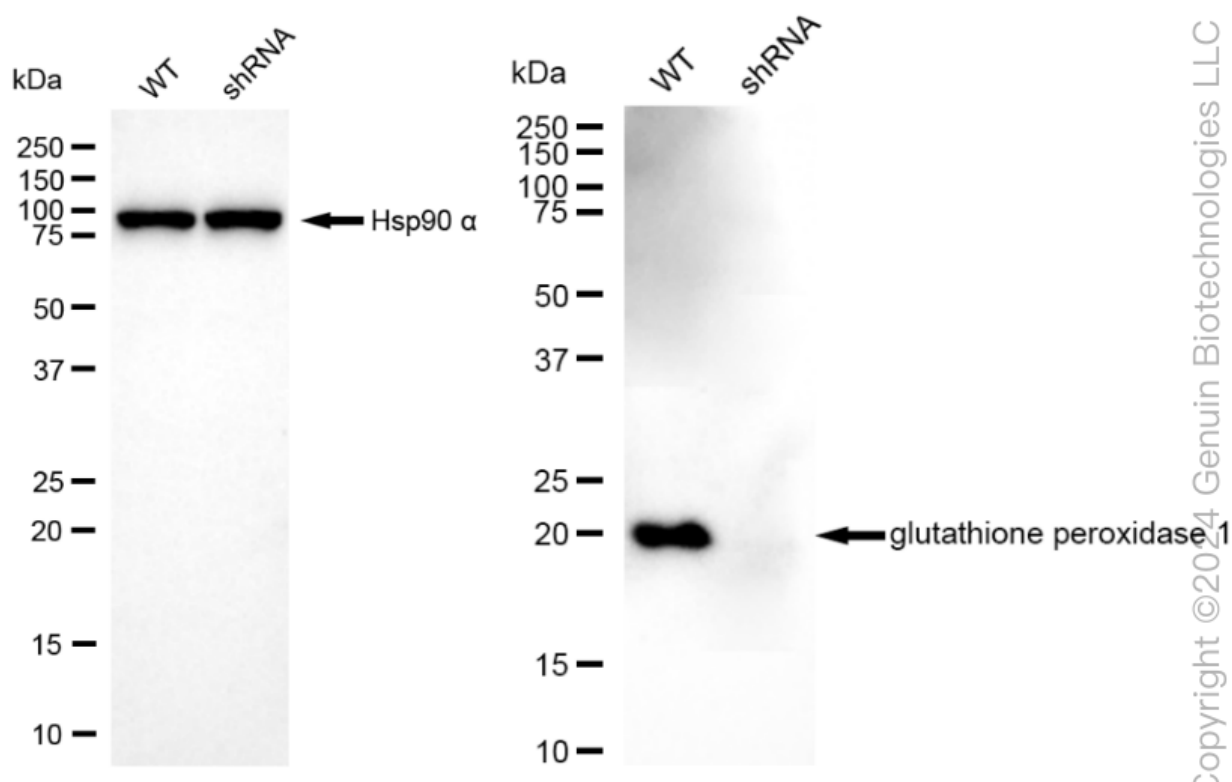
ORDERS

SALES@GENUINBIOTECH.COM
FAX: +1-540-855-7041

WWW.GENUINBIOTECH.COM

KD-Validated Anti-Glutathione Peroxidase 1 Rabbit Monoclonal Antibody

PAGE 4



Western blotting analysis using anti-glutathione peroxidase 1 antibody (Cat#63187). Glutathione peroxidase 1 expression in wild type (WT) and glutathione peroxidase 1 (GPX1) shRNA knockdown (KD) HeLa cells with 20 μ g of total cell lysates. Hsp90 α serves as a loading control. The blot was incubated with anti-glutathione peroxidase 1 antibody (Cat#63187, 1:5,000) and HRP-conjugated goat anti-rabbit secondary antibody (Cat#201, 1:20,000) respectively. Image was developed using NaQ™ ECL Substrate Kit (Cat#716).

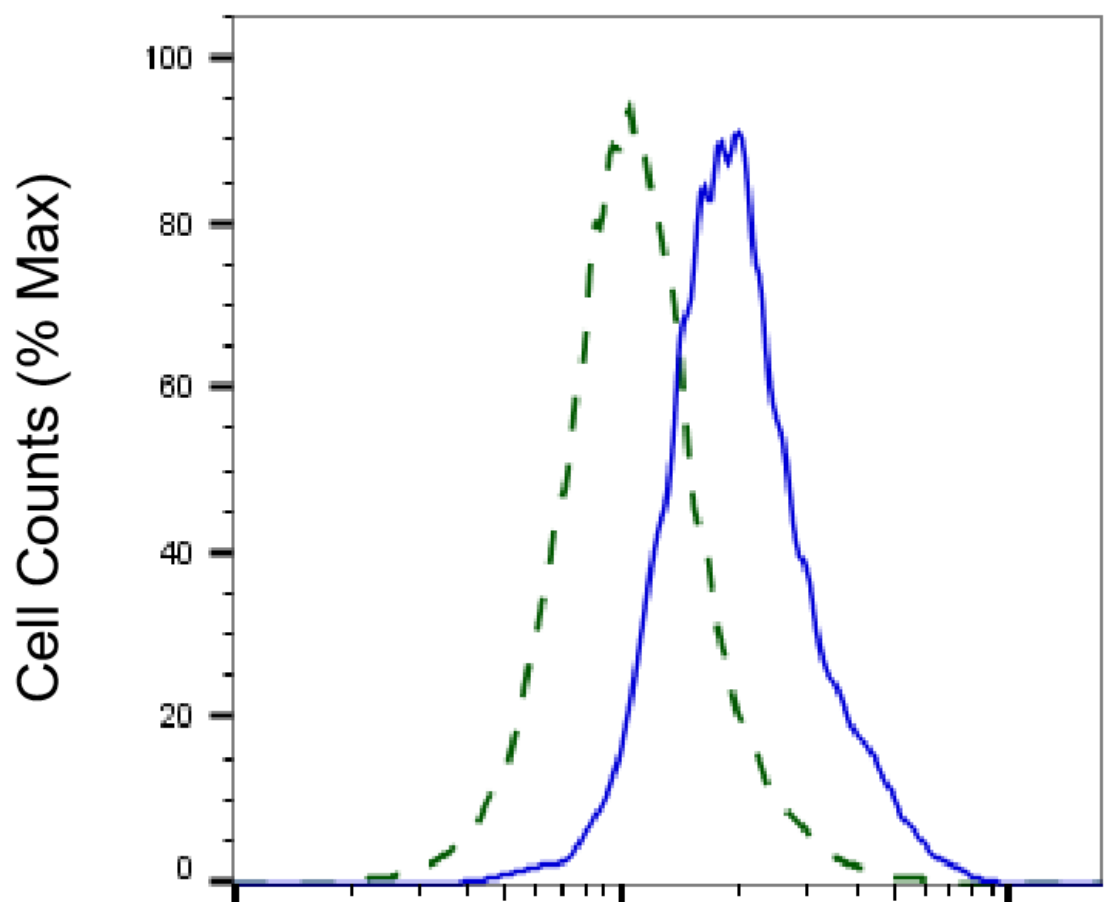
SUPPORT

SUPPORT@GENUINBIOTECH.COM
TEL: +1-540-855-7041

ORDERS

SALES@GENUINBIOTECH.COM
FAX: +1-540-855-7041

WWW.GENUINBIOTECH.COM



Copyright ©2025 Genuin Biotechnologies LLC

Glutathione peroxidase 1-Alexa Fluor® 647

Validation of Glutathione peroxidase 1 knockdown using flow cytometry. Wild-type(WT, Blue) and knockdown(KD, Green) HeLa cells were stained with anti-Glutathione peroxidase 1 antibody (Cat#63187, 1:2,000) and analyzed using BD flow cytometer.