

KD-Validated Anti-Integrin alpha V Rabbit Monoclonal Antibody



Catalog #: 63189

Aliases

ITGAV; Integrin Subunit Alpha V; CD51; MSK8; VNRA; VTNR; Integrin, Alpha V (Vitronectin Receptor, Alpha Polypeptide, Antigen CD51); Antigen Identified By Monoclonal Antibody L230; Vitronectin Receptor Subunit Alpha; Vitronectin Receptor; Integrin Alpha-V; Integrin AlphaVbeta3; Integrin, Alpha V; CD51 Antigen

Background

Gene Name: ITGAV

NCBI Gene Entry: [3685](#)

UniProt Entry: [P06756](#)

Application Information

Molecular Weight: Predicted, 116 kDa, observed, 135 kDa

Clonality: Rabbit monoclonal antibody

Clone ID: 24GB4435

Species Reactivity: Human, mouse, rat

Applications Tested: Western blotting (WB), flow cytometry (FCM)

Immunogen

Recombinant protein of human Integrin alpha V

Isotype

Rabbit IgG

Storage Buffer

Supplied in PBS (pH 7.4) containing 50% glycerol, and 0.02% sodium azide.

Storage

Store at -20 °C for one year.

Recommended Dilutions

Western Blotting (WB): 1:1,000-1:5,000

Flow Cytometry (FCM): 1:2,000

Note: This product is for research use only.

SUPPORT

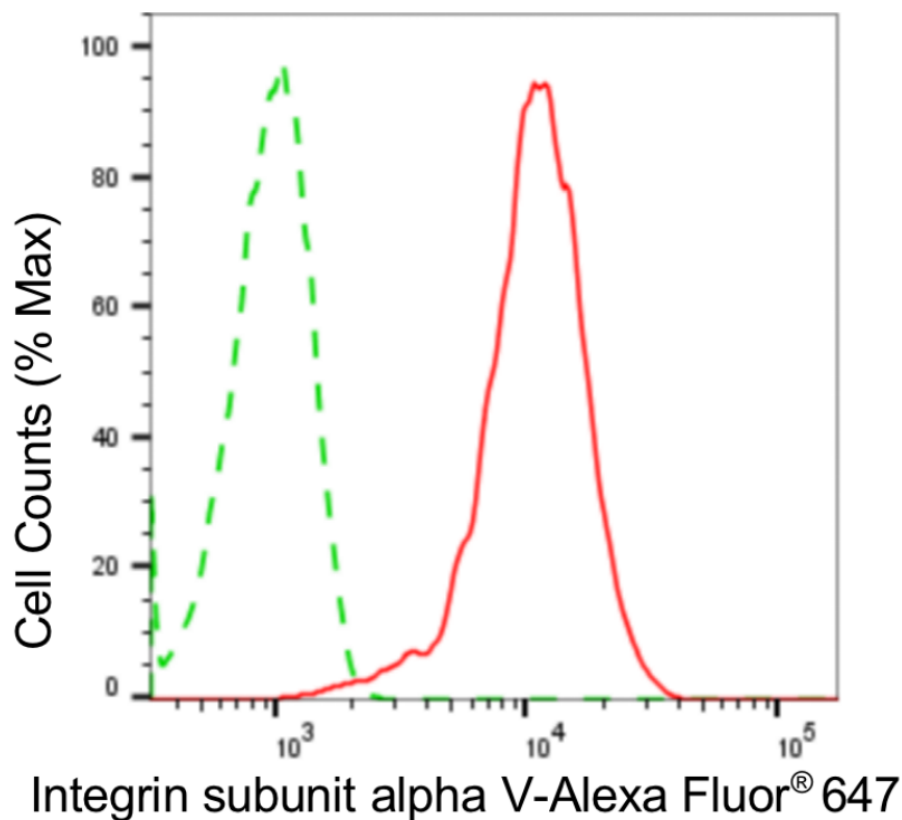
SUPPORT@GENUINBIOTECH.COM
TEL: +1-540-855-7041

ORDERS

SALES@GENUINBIOTECH.COM
FAX: +1-540-855-7041

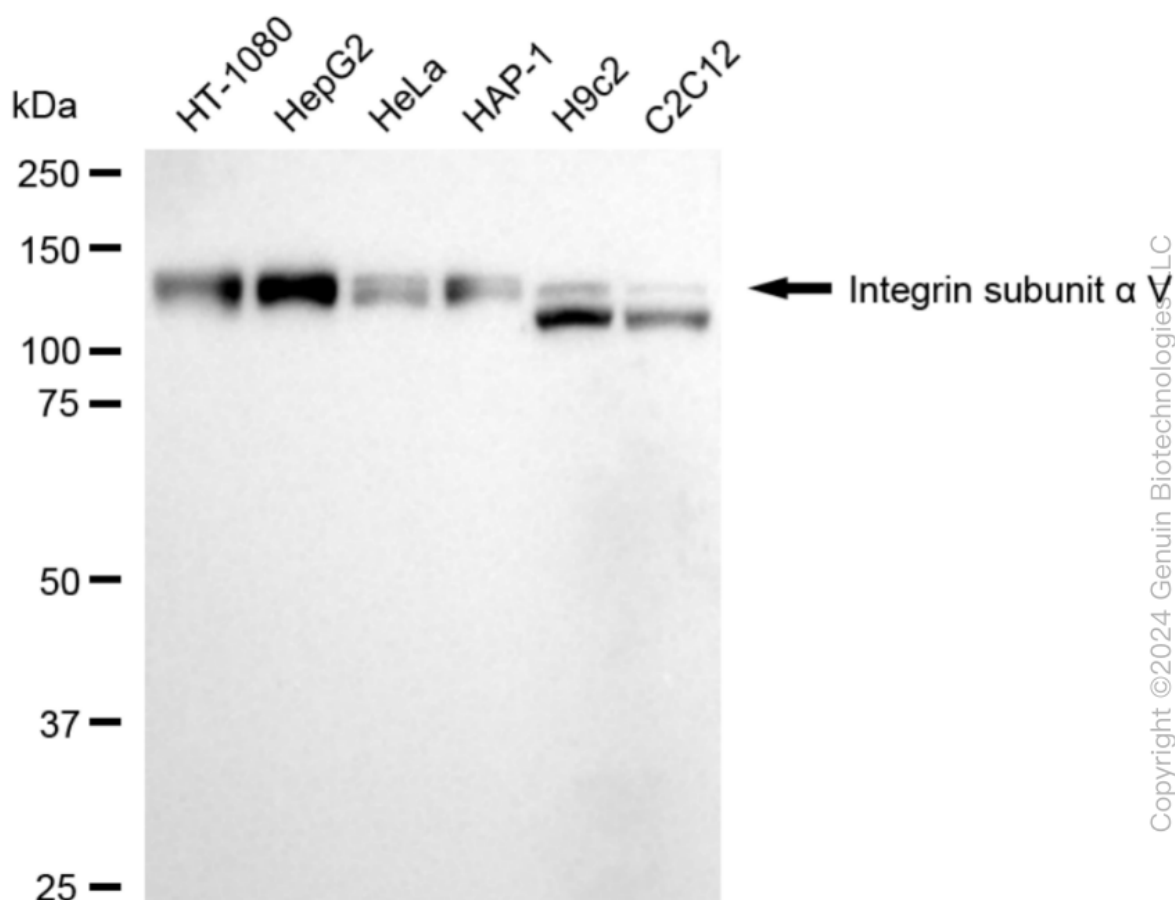
WWW.GENUINBIOTECH.COM

Validation Data

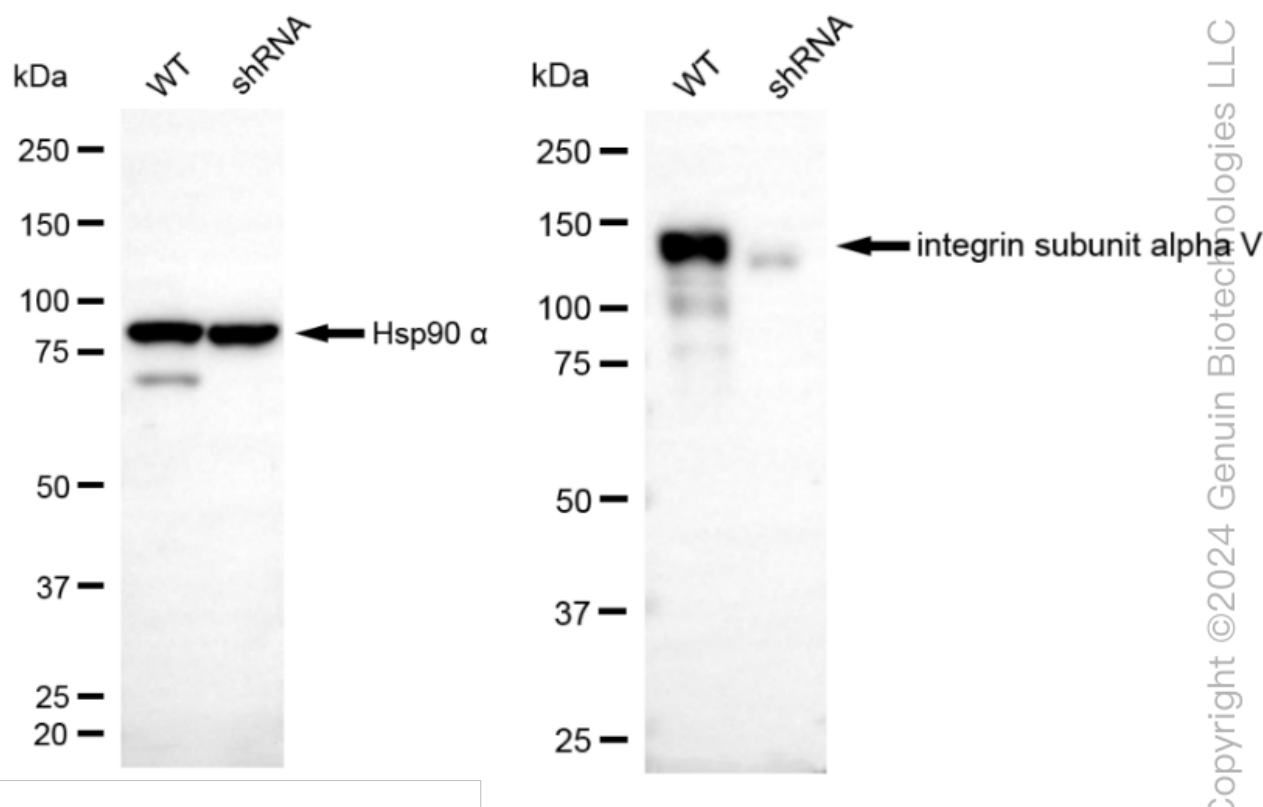


Copyright ©2024 Genuin Biotechnologies LLC

Flow cytometric analysis of integrin subunit alpha V expression in HepG2 cells using anti-integrin subunit alpha V antibody (Cat#63189, 1:2,000). Green, isotype control; red, integrin subunit alpha V.



Western blotting analysis using anti-integrin subunit alpha V antibody (Cat#63189). Total cell lysates (30 µg) from various cell lines were loaded and separated by SDS-PAGE. The blot was incubated with anti-integrin subunit alpha V antibody (Cat#63189, 1:5,000) and HRP-conjugated goat anti-rabbit secondary antibody (Cat#201, 1:20,000) respectively. Image was developed using NaQ™ ECL Substrate Kit (Cat#716).



Western blotting analysis using anti-integrin subunit alpha V antibody (Cat#63189). Integrin subunit alpha V expression in wild-type (WT) and integrin subunit alpha V (ITGAV) shRNA knockdown (KD) HeLa cells with 20 μ g of total cell lysates. Hsp90 α serves as a loading control. The blot was incubated with anti-integrin subunit alpha V antibody (Cat#63189, 1:5,000) and HRP-conjugated goat anti-rabbit secondary antibody (Cat#201, 1:20,000) respectively. Image was developed using NaQTM ECL Substrate Kit (Cat#716).