

# KD-Validated Anti-Protein Kinase C Delta Rabbit Monoclonal Antibody



**Catalog #: 63200**

## Aliases

PRKCD; Protein Kinase C Delta; Tyrosine-Protein Kinase PRKCD; Protein Kinase C Delta Type; EC 2.7.11.13; NPKC-Delta; PKCD; Protein Kinase C Delta VIII; Protein Kinase C, Delta; EC 2.7.10.2; EC 2.7.11; ALPS3; CVID9; MAY1

## Background

Gene Name: PRKCD

NCBI Gene Entry: [5580](#)

UniProt Entry: [P28867](#)

## Application Information

Molecular Weight: Predicted, 78 kDa, observed, 73 kDa

Clonality: Rabbit monoclonal antibody

Clone ID: 24GB4485

Species Reactivity: Human, mouse, rat

Applications Tested: Western blotting (WB), flow cytometry (FCM)

## Immunogen

Recombinant protein of mouse PKC delta

## Isotype

Rabbit IgG

## Storage Buffer

Supplied in PBS (pH 7.4) containing 50% glycerol, and 0.02% sodium azide.

## Storage

Store at -20 °C for one year.

## Recommended Dilutions

Western Blotting (WB): 1:1,000-1:5,000

Flow Cytometry (FCM): 1:2,000

**Note:** This product is for research use only.

## Validation Data

---

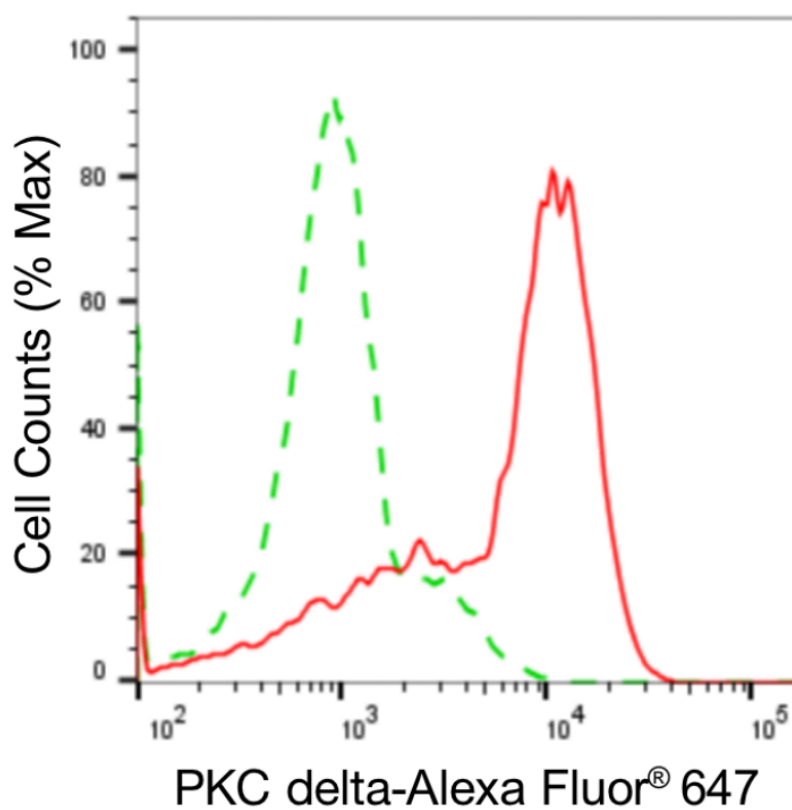
### SUPPORT

SUPPORT@GENUINBIOTECH.COM  
TEL: +1-540-855-7041

### ORDERS

SALES@GENUINBIOTECH.COM  
FAX: +1-540-855-7041

[WWW.GENUINBIOTECH.COM](http://WWW.GENUINBIOTECH.COM)

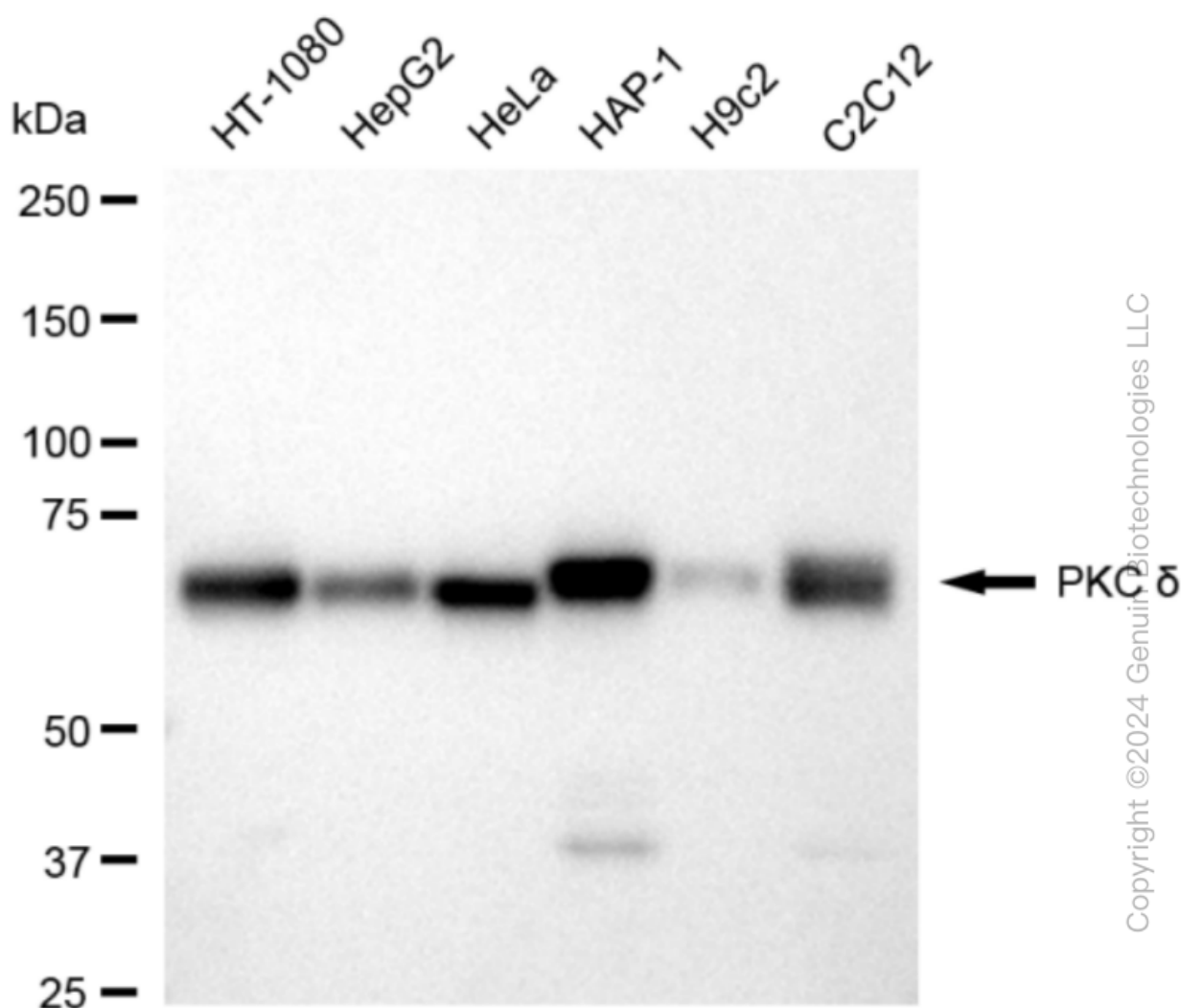


Copyright ©2024 Genuin Biotechnologies LLC

Flow cytometric analysis of PKC delta expression in HAP-1 cells using anti-PKC delta antibody (Cat#63200, 1:2,000). Green, isotype control; red, PKC delta.

## KD-Validated Anti-Protein Kinase C Delta Rabbit Monoclonal Antibody

PAGE 3



Western blotting analysis using anti-PKC delta antibody (Cat#63200). Total cell lysates (30 µg) from various cell lines were loaded and separated by SDS-PAGE. The blot was incubated with anti-PKC delta antibody (Cat#63200, 1:5,000) and HRP-conjugated goat anti-rabbit secondary antibody (Cat#201, 1:20,000) respectively. Image was developed using NaQ™ ECL Substrate Kit (Cat#716).

### SUPPORT

SUPPORT@GENUINBIOTECH.COM  
TEL: +1-540-855-7041

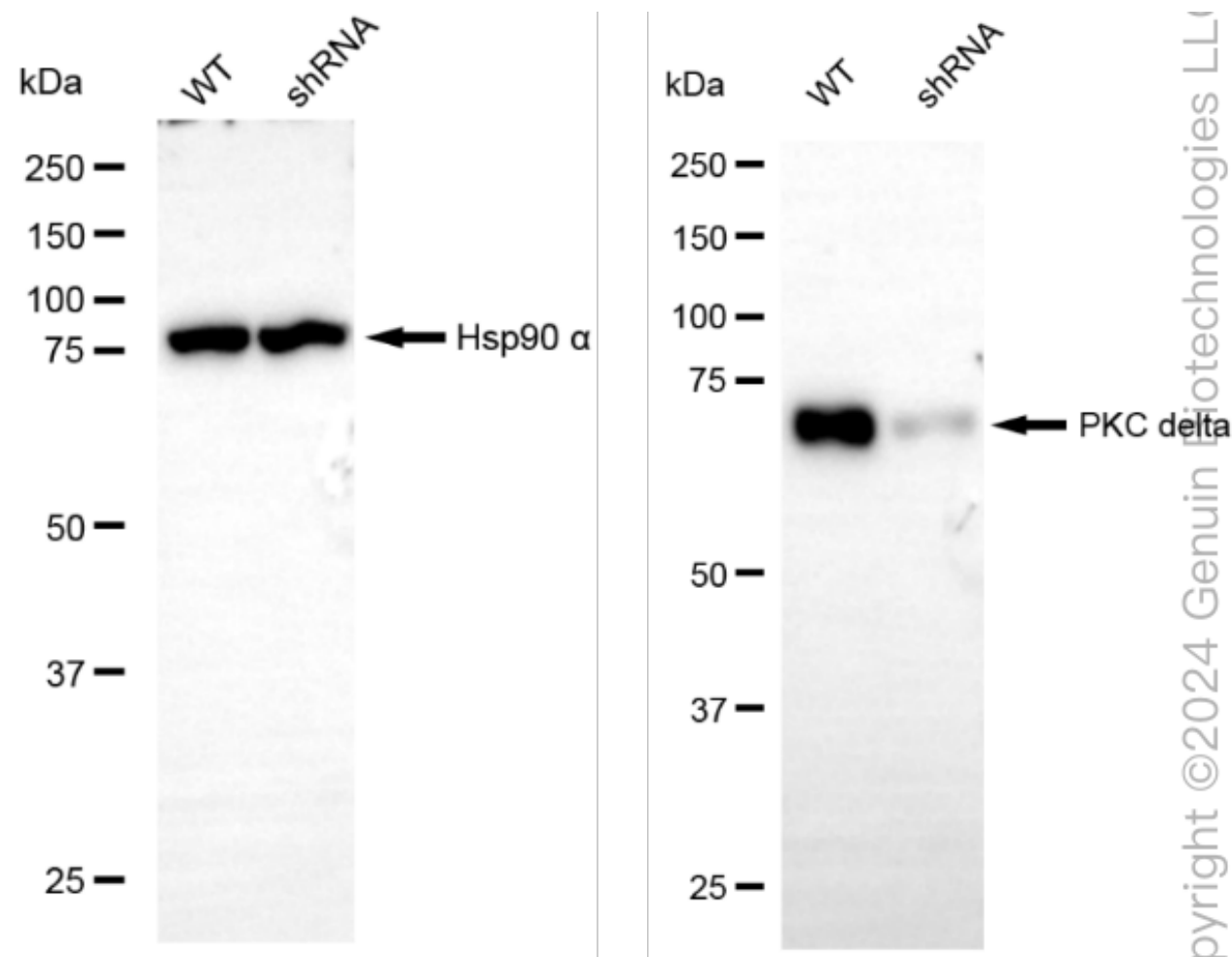
### ORDERS

SALES@GENUINBIOTECH.COM  
FAX: +1-540-855-7041

WWW.GENUINBIOTECH.COM

## KD-Validated Anti-Protein Kinase C Delta Rabbit Monoclonal Antibody

PAGE 4



Western blotting analysis using anti-PKC delta antibody (Cat#63200). PKC delta expression in wild-type (WT) and protein kinase C delta (PRKCD) shRNA knockdown (KD) HeLa cells with 20  $\mu$ g of total cell lysates.  $\beta$ -Tubulin serves as a loading control. The blot was incubated with anti-PKC delta antibody (Cat#63200, 1:5,000) and HRP-conjugated goat anti-rabbit secondary antibody (Cat#201, 1:20,000) respectively. Image was developed using NaQ<sup>TM</sup> ECL Substrate Kit (Cat#716).

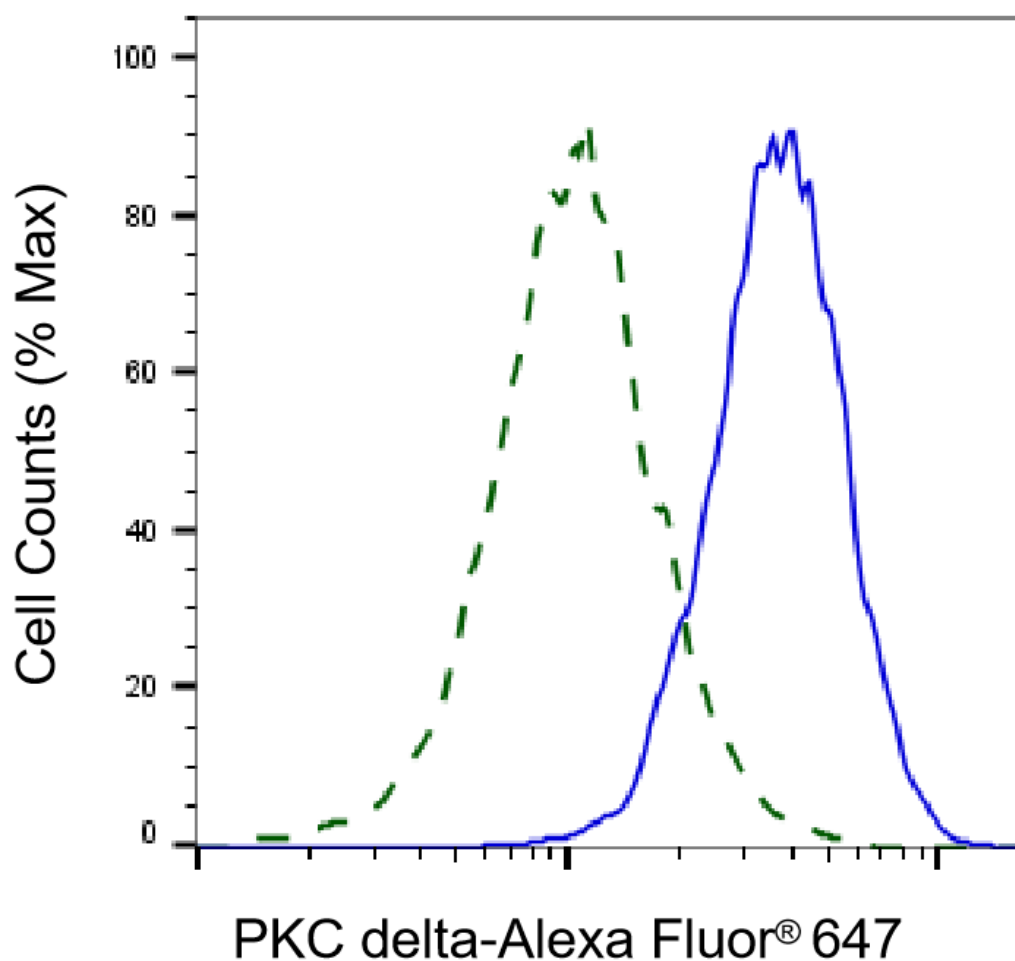
### SUPPORT

SUPPORT@GENUINBIOTECH.COM  
TEL: +1-540-855-7041

### ORDERS

SALES@GENUINBIOTECH.COM  
FAX: +1-540-855-7041

[WWW.GENUINBIOTECH.COM](http://WWW.GENUINBIOTECH.COM)



Copyright ©2025 Genuin Biotechnologies LLC

Validation of PKC delta knockdown using flow cytometry. Wild-type(WT, Blue) and knockdown(KD, Green) HeLa cells were stained with anti-PKC delta antibody (Cat#63200, 1:2,000) and analyzed using BD flow cytometer.