

KD-Validated Anti-Phospho-PKC gamma (Thr514) Rabbit Monoclonal Antibody



Catalog #: 63201

Aliases

PRKCG; Protein Kinase C Gamma; PKC-Gamma; PKCC; PKCG; Protein Kinase C Gamma Type; EC 2.7.11.13; MGC57564; SCA14; Protein Kinase C, Gamma; EC 2.7.11; PKCgamma; PKCI(3); PKC γ

Background

Gene Name: PRKCG

NCBI Gene Entry: [5582](#)

UniProt Entry: [P05129](#)

Application Information

Molecular Weight: Predicted, 78 kDa, observed, 75 kDa

Clonality: Rabbit monoclonal antibody

Clone ID: 24GB4490

Species Reactivity: Human, mouse, rat

Applications Tested: Western blotting (WB), flow cytometry (FCM), immunocytochemistry (IC)

Immunogen

A synthesized peptide derived from human Phospho-PKC gamma (Thr514)

Isotype

Rabbit IgG

Storage Buffer

Supplied in PBS (pH 7.4) containing 50% glycerol, and 0.02% sodium azide.

Storage

Store at -20 °C for one year.

Recommended Dilutions

Western Blotting (WB): 1:1,000-1:5,000

Flow Cytometry (FCM): 1:2,000

Immunocytochemistry (IC): 1:100-1:1,000

Note: This product is for research use only.

SUPPORT

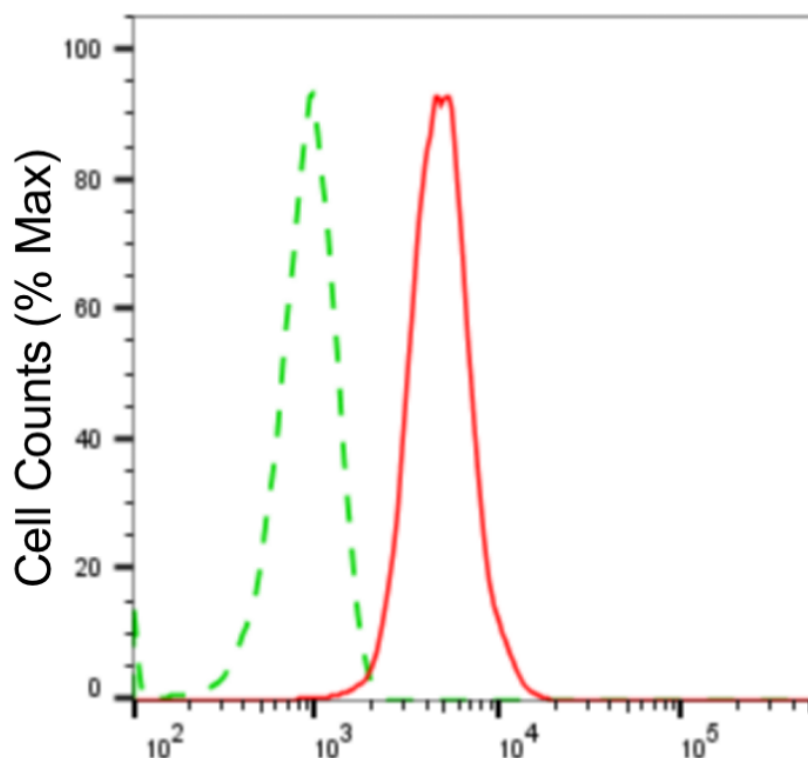
SUPPORT@GENUINBIOTECH.COM
TEL: +1-540-855-7041

ORDERS

SALES@GENUINBIOTECH.COM
FAX: +1-540-855-7041

WWW.GENUINBIOTECH.COM

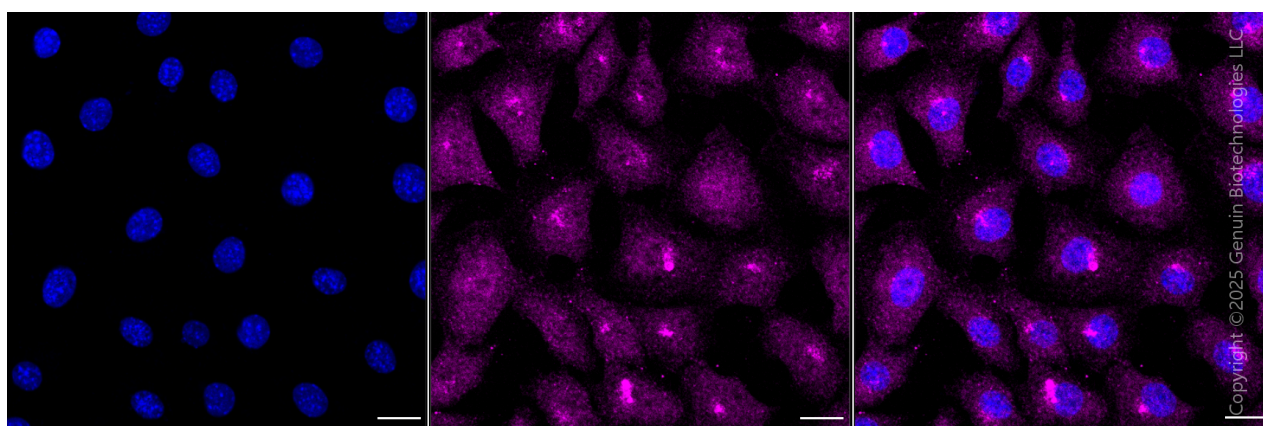
Validation Data



Copyright ©2024 Genuin Biotechnologies LLC

Phospho-PKC gamma (Thr514)-Alexa Fluor® 647

Flow cytometric analysis of Phospho-PKC gamma (Thr514) expression in C2C12 cells using anti-Phospho-PKC gamma (Thr514) antibody (Cat#63201, 1:2,000). Green, isotype control; red, Phospho-PKC gamma (Thr514).



Copyright ©2025 Genuin Biotechnologies LLC

Immunocytochemical staining of C2C12 cells with anti-Phospho-PKC gamma (Thr514) antibody (Cat#63201, 1:1,000). Nuclei were stained blue with DAPI; Phospho-PKC gamma (Thr514) was stained magenta with Alexa Fluor® 647. Images were taken using Leica stellaris 5. Protein abundance based on laser Intensity and smart gain: Medium. Scale bar, 20 μ m.

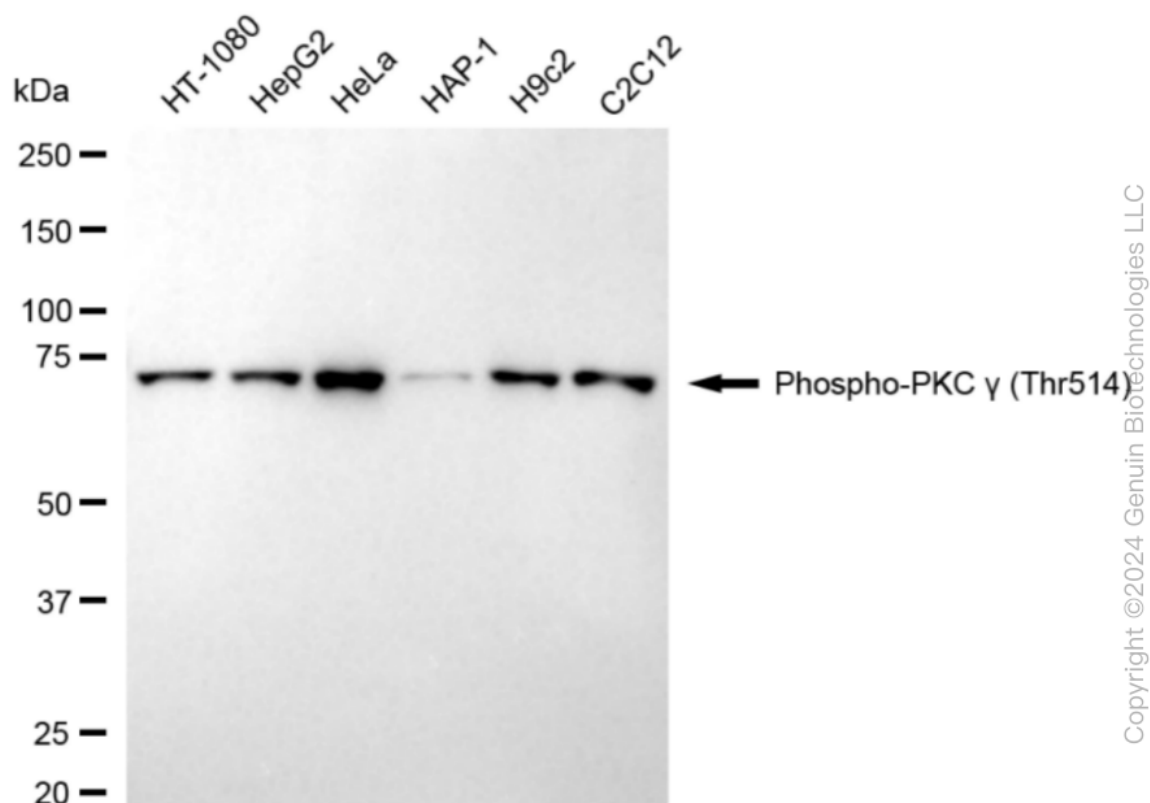
SUPPORT

SUPPORT@GENUINBIOTECH.COM
TEL: +1-540-855-7041

ORDERS

SALES@GENUINBIOTECH.COM
FAX: +1-540-855-7041

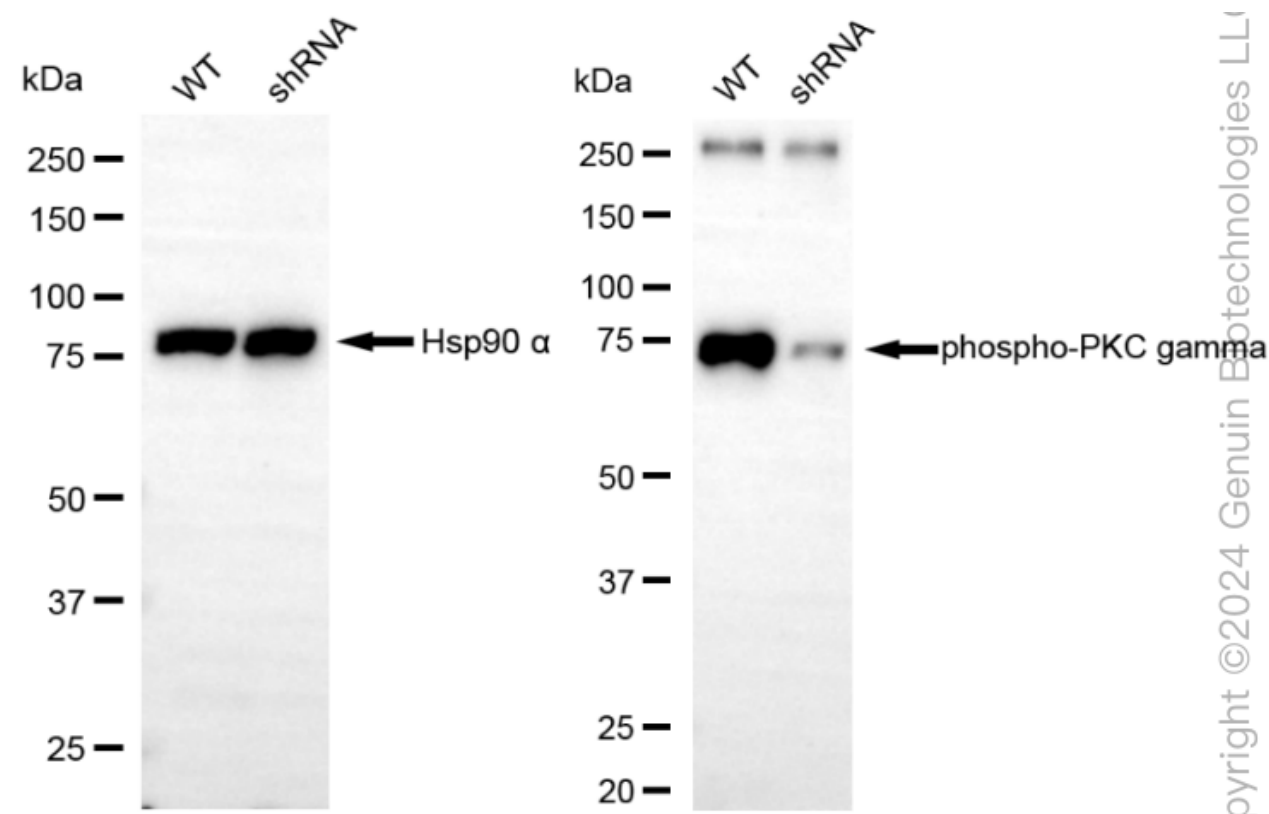
WWW.GENUINBIOTECH.COM



Western blotting analysis using anti-phospho-PKC gamma (Thr514) antibody (Cat#63201). Total cell lysates (30 µg) from various cell lines were loaded and separated by SDS-PAGE. The blot was incubated with anti-phospho-PKC gamma (Thr514) antibody (Cat#63201, 1:5,000) and HRP-conjugated goat anti-rabbit secondary antibody (Cat#201, 1:20,000) respectively. Image was developed using NaQ™ ECL Substrate Kit (Cat#716).

KD-Validated Anti-Phospho-PKC gamma (Thr514) Rabbit Monoclonal Antibody

PAGE 4



Western blotting analysis using anti-phospho-PKC gamma (Thr514) antibody (Cat#63201). Phospho-PKC gamma (Thr514) expression in wild type (WT) and PRKCG shRNA knockdown (KD) HT-1080 cells with 20 µg of total cell lysates. Hsp90 α serves as a loading control. The blot was incubated with anti-phospho-PKC gamma (Thr514) antibody (Cat#63201, 1:5,000) and HRP-conjugated goat anti-rabbit secondary antibody (Cat#201, 1:20,000) respectively. Image was developed using NaQ™ ECL Substrate Kit (Cat#716).

SUPPORT

SUPPORT@GENUINBIOTECH.COM
TEL: +1-540-855-7041

ORDERS

SALES@GENUINBIOTECH.COM
FAX: +1-540-855-7041

WWW.GENUINBIOTECH.COM